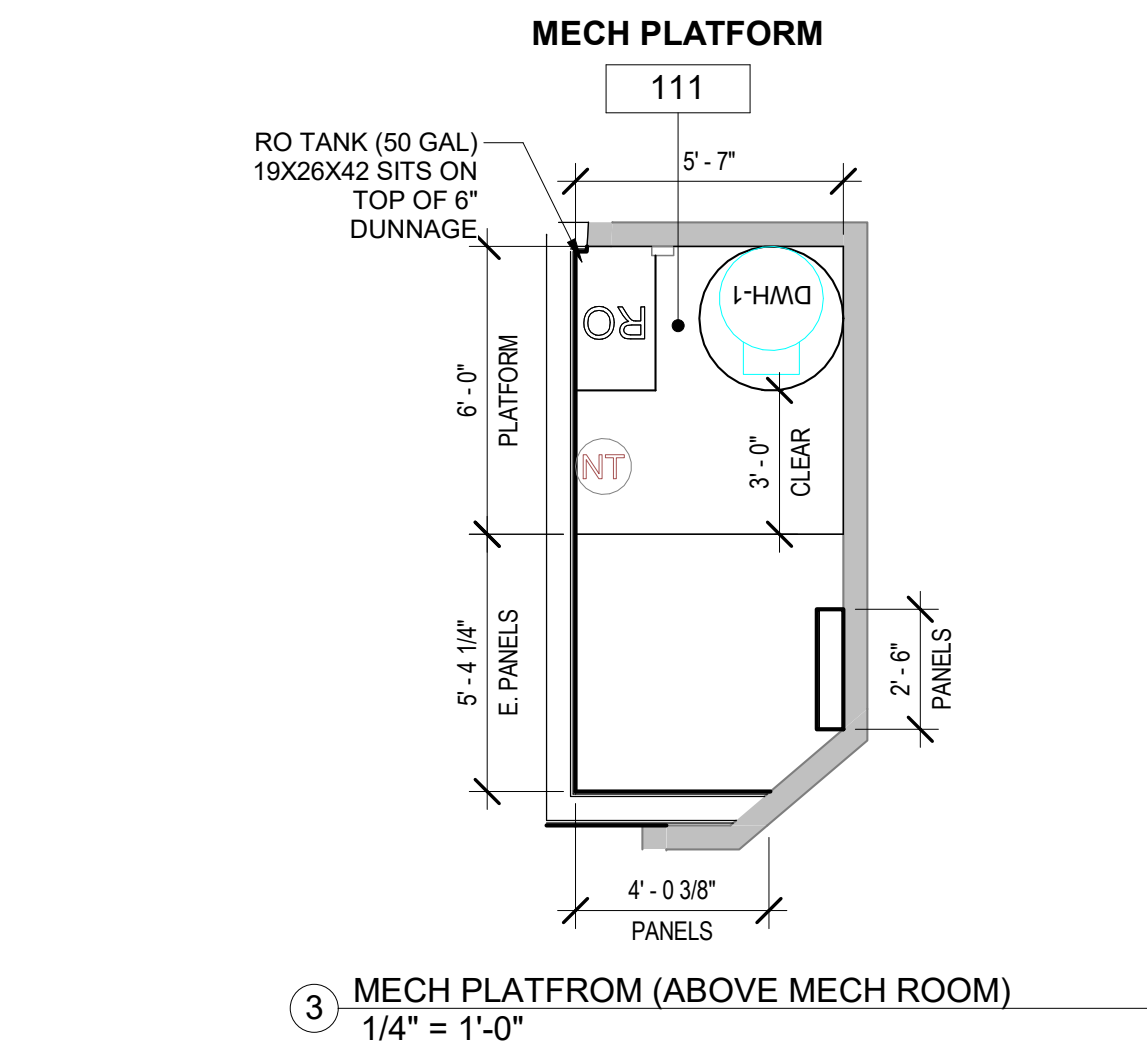
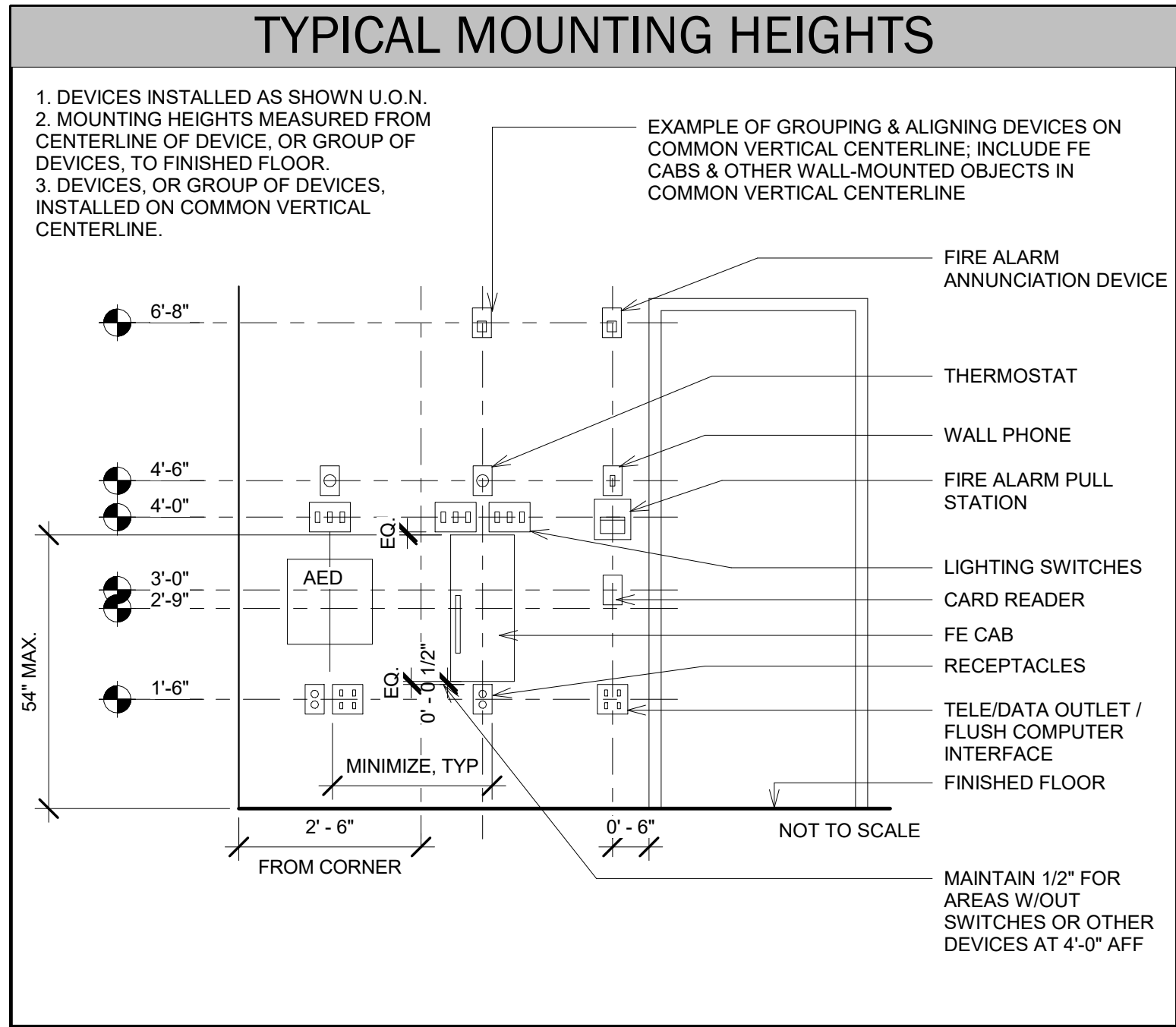


2025-0217 POS EQUIPMENT SCHEDULE									
ITEM NO.	QTY	ITEM DESCRIPTION	MFR	MODEL	DIMENSIONS	ELECTRICAL		NOTES	REF. IMAGE
						POS Elec - Data	POS Elec - Power		
MAIN LINE COUNTER									
200	3	SCREEN (MAIN LINE REGISTER)	TOAST	HD 14" FLEX TERMINAL	14.0"Lx8.6"Wx10"H (HIGH MODE)	(1) BOX W/ (4) DATA PORTS IN PER POS	(1) QUAD OUTLET PER POS	SCREEN (MAIN LINE REGISTER)	
202	3	TAP	TOAST	TAP CC READER	3.1"Lx3.1"Wx2"H			OPTIONAL ADHEASIVE STRIP FOR ON-COUNTER STABILITY	
204	3	PRINTER	TOAST					2.5 LBS. 250 MM/SEC	
205	1	PRINTER (PASTRY)	TOAST			(1) BOX WITH (2) DATA PORTS	(1) DUPLEX OUTLET		
206	3	CASH DRAWER	TOAST		16.3"Lx16.1"Wx3.9"H (W/O FEET)			15.8 LBS	
BARISTA									
210	2	SCREEN	TOAST	HD 14" FLEX TERMINAL				14" FLIP SCREEN WITH G-SENSOR. FULL HD LCD & TOUCH SCREEN.	
214	2	PRINTER	EPSON	L90				4.1LBS	
PASS THRU COUNTER									
220	1	SCREEN	TOAST	EXPO (FOH)	14.0"Lx8.6"Wx10"H (HIGH MODE)	(3) BOXES W/ (2) DATA PORTS IN EA	(2) QUAD OUTLETS TOTAL	14" FLIP SCREEN WITH G-SENSOR. FULL HD LCD & TOUCH SCREEN.	



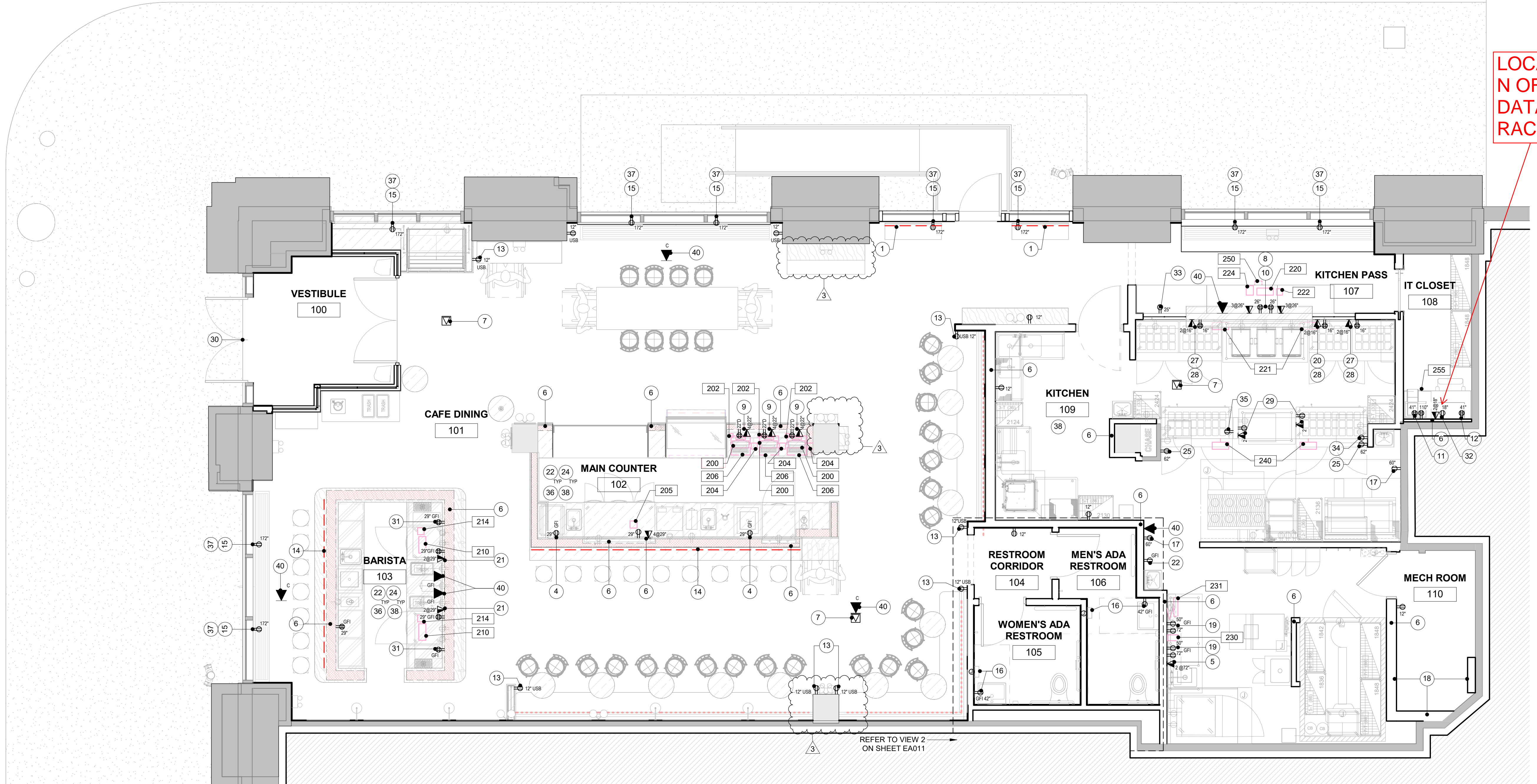
2025-0217 POS EQUIPMENT SCHEDULE									
ITEM NO.	QTY	ITEM DESCRIPTION	MFR	MODEL	DIMENSIONS	ELECTRICAL		NOTES	REF. IMAGE
						POS Elec - Data	POS Elec - Power		
PREP									
221	2	SCREEN	TOAST	EXPO (BOH)				14" FLIP SCREEN WITH G-SENSOR. FULL HD LCD & TOUCH SCREEN.	
222	1	PRINTER	TOAST		5.1"Lx5.4"Wx5.4"H			2.5 LBS. 250 MM/SEC	
224	1	ITEM LABEL PRINTER	TOAST		8.0"Lx6.1"Wx6.3"H			2.5 LBS. 250 MM/SEC	
250	1	HANDHELD	TOAST		7.9"Lx0.8"Wx3.7"H			1.1LBS -LOCATE UNDER THE OUTSIDE EXPO STATION.	
KITCHEN									
230	1	PRINTER	JOLT		9"Lx5"Wx6"H	(1) BOX WITH (1) DATA PORT @ 72"	(1) DUPLEX OUTLET @ 72"	LOCATE @ END OPPOSITE THE SINK.	
231	1	IPAD (KITCHEN SYNC)	APPLE		16"Lx6.2"Wx2.0"D		(1) DUPLEX OUTLET @ 50"	LOCATE ON A DESKTOP STAND.	
KITCHEN									
240	2	SCREEN (KITCHEN DISPLAY)	TOAST	EXPO (BOH)	14.0"Lx8.6"Wx10"H (HIGH MODE)	(1) BOX WITH (2) DATA PORTS	(1) DUPLEX OUTLET	14" FLIP SCREEN WITH G-SENSOR. FULL HD LCD & TOUCH SCREEN. WALL MOUNT	
OFFICE									
255	1	IT RACK	NAVEPOINT	00405557	23.63"Wx23.63"Dx36H			LABEL IT RACK PATCH PANEL FROM 1-48 TO MATCH THE DATA PORTS. INSTALL TECH DEVICES USING RACK EARS.	

KEYNOTES	
1	G.C. TO INSTALL PLUG MOLDS AT UNDERSIDE OF DRINK RAIL COUNTERS. POWER WIRING MUST BE FED UP THE BACK SIDE OF POST THROUGH FLOOR CORE. ALL WIRING TO BE RUN TIGHT TO THE BACK SIDES WITH KITCHEN POST. TYP. PLUG MOLDS TO BE WHITE. PLACE USB OUTLET EVERY 2'-0".
4	G.C. TO PROVIDE CONVENIENCE DUPLEX WITHIN MILLWORK CABINET FOR FUTURE USE 18" AFF.
5	(1) DATA PORT PLATE, (2) DATA DROPS. SEE MOUNTING HEIGHTS ON PLAN.
6	ALL ELECTRICAL PLUMBING TO BE RUN THROUGH PROVIDED CHASE WALL AND DISPERSED AS REQUIRED. COORDINATE WITH MEP DRAWINGS.
7	(1) WAP AND (2) DROPS @ CEILING. VERIFY ALL WIFI LOCATIONS WITH OWNER IN FIELD.
8	(2) DATA PORT PLATES, (6) DATA DROPS, AND (2) QUADS REQUIRED. SEE MOUNTING HEIGHTS ON PLAN. COORDINATE WITH FINAL SHELF HT. GROMMETS AT SHELF BY TRIMARK.
9	(1) DATA PORT PLATE, (4) DATA DROPS, AND (1) QUAD REQUIRED PER POS LOCATION. PROVIDE 3 POS CONNECTION POINTS. FINAL NUMBER OF POS STATIONS TO BE DECIDED BY OWNER.
10	DIMENSIONS ARE TO TOP OF OUTLET COVERS. COORDINATE WITH STAINLESS STEEL SHELVING HEIGHT.
11	TRIPP LITE SMARTTRACK 6U LOW-PROFILE SWITCH-DEPTH-PLUS WALL-MOUNT RACK ENCLOSURE CABINET LOCATION. PROVIDE (3) QUAD OUTLETS NEAR 6" BELOW CEILING IN ALCOVE ABOVE DESK FOR RACK. DATA RACK TO BE WALL MOUNTED ABOVE DESK. COORDINATE EXACT LOCATION WITH OWNER. G.C. TO PROVIDE IN WALL BLOCKING FOR MOUNTING. FOR IT RACK
12	DATA DROP: ONE PHONELINE FROM UNDER OFFICE DESK TO BE RUN TO SHELF ABOVE. PROVIDE (2) DUPLEX OUTLETS BELOW DESK. SHOWN FOR GENERAL LOCATION. COORDINATE WITH OWNER ABOVE BACKSPLASH OF DESK.
13	BANQUETTE CONVENIENCE OUTLETS. TO BE LOCATED HORIZONTALLY AND 6" FROM FLOOR TO CENTER OF BOX.
14	G.C. TO INSTALL WHITE PLUG MOLDS AT UNDERSIDE OF MAIN COUNTER AND BLACK OR BROWN AT BARISTA COUNTER. POWER WIRING MUST BE FED THROUGH DIE WALL. PLACE USB OUTLET EVERY 4'-0" STARTING 1'-0" FROM DIE WALL EDGE. INSTALLED ON DIE WALL AND TIGHT TO COUNTER.
15	COORDINATE OUTLET ABOVE STOREFRONT WITH ENGINEERING DRAWINGS.
16	G.C. TO VERIFY WITH FINAL RESTROOM ACCESSORIES SUBMITTALS FOR POWER REQUIREMENTS.
17	OUTLET FOR BUG LIGHT TO BE AT 5' AFF.
18	PROPOSED LOCATION OF NEW RECESSED ELECTRICAL PANELS
19	(2) DEDICATED 20 AMP CIRCUITS WITH (1) QUAD OUTLET ABOVE TABLE - 50" AND (1) QUAD OUTLET ABOVE SHELF - 72" AFF TO BOTTOM OF OUTLET COVER.
20	(1) DATA PORT PLATES, (2) DATA DROPS, AND (1) DUPLEX FOR KDS SCREEN. G.C. TO COORDINATE SCREEN MOUNTING.

GENERAL NOTES	
1	ALL DIMENSIONS ARE TO CENTERLINE OF RECEPTACLE OR GANG RECEPTACLE.
2	GANG RECEPTACLES WHERE APPLICABLE.
3	REFER TO ENGINEER'S DRAWINGS FOR ALL SWITCH LOCATIONS. GC TO CONFIRM FINAL LOCATION OF SWITCHES WITH ARCHITECT AND OWNER PRIOR TO INSTALLATION.
4	GC TO INVESTIGATE EXISTING WALL OUTLET CIRCUITING LOCATIONS AND REVIEW CIRCUIT LOCATIONS WITH ARCHITECT OR PROJECT ENGINEER PRIOR TO INSTALLATION.
5	LOCATIONS OF MEP DEVICES (INCLUDING THERMOSTATS, OUTLETS, MOTION SENSOR, ETC.) EXPOSED TO VIEW SHALL BE APPROVED BY ARCHITECT PRIOR TO ROUGH-IN LOCATIONS. COORDINATE WITH MEP DRAWINGS.
6	GC TO COORDINATE THE INSTALLATION OF THE DIMMING PANEL WITH OWNER AND ARCHITECT PRIOR TO INSTALLATION.
7	REFER TO THE KITCHEN EQUIPMENT PLANS AND SCHEDULE FOR ALL EQUIPMENT SPECIFICATIONS AND POWER REQUIREMENTS. THE GC SHOULD COORDINATE ALL REQUIREMENTS WITH MANUFACTURERS' SPECIFICATIONS.
8	U.N.O., THE TEL/DATA/ELEC PLAN INDICATES NEW OUTLETS ONLY. GC SHALL COORDINATE ON SITE ALL LOCATIONS OF ITEMS EXISTING TO REMAIN OR TO BE DEMOLISHED. GC SHALL TEST ALL THE DEVICES INDICATED FOR RE-USE AND REPAIR OR REPLACE IF REQUIRED.
9	ALL OUTLETS SHALL BE 18" AFF U.N.O. NUMBERS INDICATED NEXT TO SPECIFIC SYMBOLS REFER TO THE HEIGHT ABOVE FINISH FLOOR.
10	THE TEL/DATA/ELEC COVER FINISH SHALL MATCH THE WALL FINISH AS CLOSELY AS POSSIBLE. ARCHITECT TO APPROVE PRIOR TO PURCHASE.
11	WATER HEATER AND ELECTRIC PANELS ARE INDICATED FOR LOCATION ONLY. REFER TO ENGINEER'S DRAWINGS F.M.I.
12	ARCHITECTURAL PLANS ARE PROVIDING CONVENIENCE OUTLETS FOR FRONT OF HOUSE ONLY. REFER TO KITCHEN CONSULTANT DRAWINGS FOR BACK OF HOUSE CONVENIENCE OUTLETS AND EQUIPMENT POWER REQUIREMENTS.
13	GFI OUTLET IN RESTROOM @ VANITY TO BE AT 3'-8". ALIGN WITH SWITCH HEIGHT.
14	THERMOSTATS TO BE COORDINATED ON SITE.
15	VERIFY NEW EQUIPMENT REQUIREMENTS WITH OWNER AND FOOD SERVICE VENDOR.
16	ALL LIGHTS TO BE ON MANUAL SWITCHES U.N.O. (TYP.)
17	PROVIDE ALTERNATE #3 PRICING TO PROVIDE & INSTALL ALL DATA WIRING, DEVICES AND FINAL CONNECTIONS.

KEYNOTES	
21	(1) DATA PORT PLATES, (2) DATA DROPS, AND (1) QUAD REQUIRED ON BOTH SIDES OF THE BARISTA ESPRESSO MACHINE. CONFIRM ALL REQUIRED EQUIPMENT ELECTRICAL REQUIREMENTS WITH KITCHEN. ALL OUTLETS TO BE BELOW COUNTER AND MOUNTED IN CABINETS. CONFIRM CORING LOCATIONS WITH OWNER.
22	GFI RECEPTACLES REQUIRED MAXIMUM 6" FROM ALL SINKS.
24	ALL POWER AND DATA WEATHER PROOF OUTLETS TO BE LOCATED IN THE BACK OF THE CABINETS.
25	(2) DATA AND (1) DUPLEX REQUIRED. TO BE INSTALLED 6" ABOVE TOP SHELF OF OVERSHELF. COORDINATE WITH KEC DRAWINGS.
27	(1) DATA PORT PLATES, (2) DATA DROPS, AND (1) QUAD REQUIRED. SEE MOUNTING HEIGHTS ON PLAN. COORDINATE WITH FINAL SHELF HT. GROMMETS AT SHELF BY TRIMARK.
28	OUTLETS TO BE INSTALLED BELOW REFRIGERATION EQUIPMENT AND TABLE BACKSPLASH. CENTER VERTICALLY BETWEEN TOP OF EQUIPMENT AND BOTTOM OF SHELF.
29	DUPLEX AND DATA PORTS REQUIRED AT TOMSTONE IN OVERSHELF.
30	GC/ENGINEER TO PROVIDE CIRCUIT/ELECTRICAL CONNECTION FROM EXTERIOR SIGNAGE ILLUMINATION. REUSE EXISTING CIRCUIT, IF POSSIBLE.
31	OUTLETS TO BE INSTALLED HORIZONTALLY ABOVE REFRIGERATION EQUIPMENT AND TABLE BACKSPLASH. CENTER VERTICALLY BETWEEN TOP OF EQUIPMENT AND BOTTOM OF SHELF.
32	DATA/POWER FOR SAFE. (2) DATA DROPS, AND (1) DUPLEX OUTLET TO BE PROVIDED UNDER DESK FOR SMARTSAFE. COORDINATE LOCATION WITH ARCHITECTURAL DRAWINGS. ABOVE BACKSPLASH OF DESK.
33	PROVIDE DUPLEX RECEPTACLE FOR FUTURE EQUIPMENT (ICE CREAM MACHINE). CENTERLINE SHALL BE 2'-1" AFF.
34	PROVIDE DUPLEX RECEPTACLE FOR MICROWAVE. CENTERLINE TO BE 64 1/4" AFF. COORDINATE WITH KEC DRAWINGS.
35	PROVIDE DUPLEX RECEPTACLE FOR HOT WELL WITHIN OVERSHELF PROVIDED BY KEC. COORDINATE WITH KEC DRAWINGS. FEED FROM CLOSEST PARTITION WITHIN THE OVERSHELF.
36	GENERAL CONTRACTOR / ELECTRICAL CONTRACTOR SHALL FURNISH AND INSTALL ELECTRICAL WIRING FEEDS TO BARISTA (100) AND MAIN COUNTER (102) IN CELLAR BELOW WITHIN RIGID CONDUIT AS REQUIRED. REFER TO ELECTRICAL DRAWINGS FOR CONDUIT SIZE GUIDELINES. COORDINATE EXACT ROUTE AND LOCATION IN FIELD WITH BUILDING MANAGEMENT.
37	DEVICE SHOWN TO COMPLY WITH NEC 210.62 (C)(2) TO LOCATE DEVICES SHOWN SO THAT THEY ARE MOUNTED WITHIN 18" OF TOP OF WINDOW AREA FOR EACH 12 LINEAR FEET OR MAJOR FRACTION THEREOF MEASURED HORIZONTALLY AT WINDOW MAXIMUM WIDTH.
38	WIRING WITHIN THE EXTERIOR BUILDING WALLS, DEMISING WALLS AND WITHIN/BELOW FLOOR SLAB SHALL BE WITHIN RIGID METAL CONDUIT. REFER TO ELECTRICAL DRAWINGS FOR SIZE GUIDELINES.
39	GENERAL CONTRACTOR AND ELECTRICAL CONTRACTOR TO FURNISH AND INSTALL QUADRUPLX OUTLET FOR REVERSE OSMOSIS FILTRATION SYSTEM. REFER TO MEP DRAWING OR ADDITIONAL INFORMATION.
40	TYPICAL CEILING MOUNTED DATA FOR TABLE TRACKING SYSTEM.

POWER & TEL DATA LEGEND	
	NEW DUPLEX RECEPTACLE INDICATES INCHES OF DEVICE AFF. NO # MEANS DEVICE IS AT STANDARD HEIGHT.
	NEW DUPLEX RECEPTACLE: GROUND FAULT CIRCUIT INTERRUPTER
	NEW DUPLEX RECEPTACLE: DEDICATED
	DEDICATED 20 AMP CIRCUIT WITH WEATHERPROOF OUTLET
	NEW QUADRAPLEX RECEPTACLE INDICATES HEIGHT OF DEVICE AFF. IS NOT AT STANDARD HEIGHT.
	NEW OUTLET - QUADRAPLEX, DEDICATED
	NEW WAP - CEILING MOUNTED
	NEW FLOOR CORE FOR DRINK RAIL POWER CONNECTION
	NEW USB/DUPLEX RECEPTACLE
	NEW TEL-DATA DEVICE, WALL OR FURNITURE MOUNTED, 2 CABLE DROPS
	NEW TEL-DATA DEVICE, WALL OR FURNITURE MTD, 4 CABLE DROPS
	EXISTING TO REMAIN SWITCH
	EXISTING TO DEMOLISH SWITCH
	NEW SWITCH



1 POWER & DATA PLAN
1/4" = 1'-0"

PROJECT APPROVALS:

PROJECT ADDRESS:

Tatte
BAKERY & CAFÉ
315 PARK AVE SOUTH
NEW YORK, NY 10010

PROJECT TEAM:

PROPERTY OWNER
CLARITY PROPERTY TRUST
315 PARK AVE SOUTH, NEW YORK, NY 10010
DANA DINOLO
SENIOR PROPERTY MANAGER
(212) 419-7082

TENANT
TATTE BAKERY & CAFÉ
315 PARK AVE SOUTH
NEW YORK, NY 10010

ARCHITECT OF RECORD AND MEP ENGINEER
NEW YORK DESIGN ARCHITECTS
175 WEST BROADWAY
NEW YORK, NY 10013

CAFÉ INFO:

MARKET: NYT

CAFÉ NAME: GRAMERCY

DESIGN MILESTONES:

ID RELEASE	05/07/2025
SHELL PACKAGE	-
90% AOR REVIEW	-
ENGINEERING COORD.	-
PERMIT SET	-

PROJECT REVISIONS:

NO.	DESCRIPTION	DATE
2	ISSUED FOR CONSTRUCTION	08/15/25
3	IFC SET - BULLETIN 01	08/22/25

PROJECT SEAL:

new york city design
ARCHITECTS LLP

GIUSEPPE R. ANZALONE, A.I.A.
JOSEPH J. SMERNA, A.I.A.
175 WEST BROADWAY, NEW YORK, NY 10013
TEL: 212-680-0140 | FAX: 212-680-9548

LICENSE #
EXPIRATION DATE: 12/31/2025

PROFESSIONAL CERTIFICATION: I HEREBY CERTIFY THAT THESE DOCUMENTS WERE PREPARED UNDER MY DIRECT SUPERVISION, AND THAT I AM A DULY LICENSED PROFESSIONAL ARCHITECT UNDER THE LAWS OF THE STATE OF NEW YORK.

LEGEND: These plans and specifications, as well as New York Design Architects, LLP name and logo, trademarks and designs are the exclusive property of New York Design Architects, LLP. Any reproduction, modification, disclosure and/or use of these materials (or any portion of them) without prior written consent is strictly prohibited. Contractor and/or subcontractor shall not scale off these drawings for any reason. The architect/engineer of record shall not be responsible for work being performed by scaling of drawings. All dimensions shall be set out in accordance to building department approved drawings. Any discrepancies with field dimensions and dimensions indicated on approved drawings. This document is produced under title 17, US code, is intended for use by the architect/engineer of record and is not to be used for any other purpose. Any person other than the author of such document is liable for any and all consequences.

PROJECT INFORMATION:

PROJECT #: 25006

DRAWN BY: DT

PROJECT MANAGER: IS

PARTNER IN CHARGE: JS

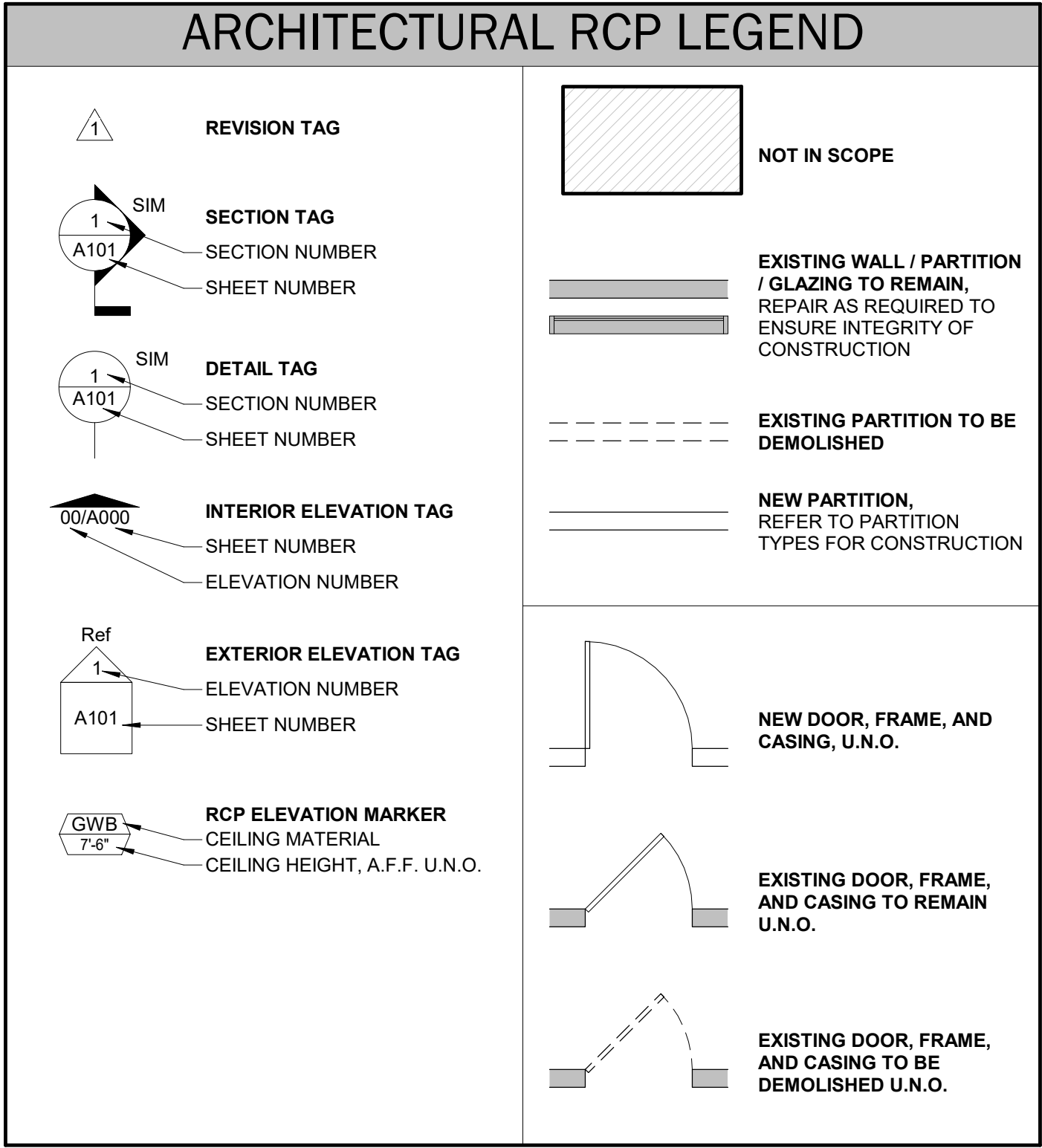
SHEET TITLE:
ARCHITECTURAL POWER PLAN

SHEET NUMBER: A010.00
PAGE #: 09 OF 33

DOB APPROVAL(S):

DOB BAR CODE:

M01253424-11



HUNG ACOUSTICAL CEILING TILE NOTES

1. NEW CEILING SUSPENSION SYSTEM TO BE 2'X2' GRID AND CEILING TILES AS SELECTED BY OWNER. CEILING AND ALL COMPONENTS OF SHALL BE ONE HOUR FIRE RATED MINIMUM.
2. ALL FIXTURES IN LAY IN CEILING GRID SHALL BE TENTED IF REQUIRED BY N.Y.C. AND U.I. DESIGNS & SHALL BE OF EQUAL RATING OF CEILING LAYED IN.
3. ALL CEILING AND HANGING COMPONENTS TO BE M.E.A. OR B.S.A. APPROVED AS LISTED HEREWITH OR EQUAL.
 - HANG CLIPS: B.S.A. 548-58 SM
 - GAT CLIP: 481.5L B.S.A. 16-59 SM
4. HANGING RODS TO BE 1/4" DIA. GALVANIZED STEEL RODS NOT TO EXCEED 4'-0" O.C. EACHWAY PROVIDE ADDITIONAL SEISMIC BRACING AS PER CONST. STANDARDS.
5. HANGING CHANNELS TO BE 1 1/2" @ 4'-6" O.C. 16 GAUGE (COLD ROLLED) 475#
6. AT EVERY END OF LIGHT FIXTURES AN INTERLOCKING "T" MUST BE USED.
7. THE TOTAL WEIGHT OF A LIGHT FIXTURE AND OTHER EQUIPMENT INCLUDING OTHER CEILING MATERIAL SUPPORTED BY THE MAIN BEAM MUST NOT EXCEED THE ALLOWABLE DEFLECTION OF 1/360 OF ITS SPAN. DEFLECTION DATA MUST BE FURNISHED AND CERTIFIED BY THE MANUFACTURER.
8. SURFACE OR PENDANT FIXTURES MUST BE INDEPENDENTLY SUPPORTED FROM 1 1/2" BLACK IRON OR FROM FLOOR OR ROOF CONSTRUCTION.
9. ALL CEILINGS OR PORTION OF CEILINGS TO COMPLY WITH N.Y.C. REFERENCE STANDARDS RS 5-15 THRU RS 5-16.

NOTE:
1. SER MECHANICAL AND ELECTRICAL SHEETS FOR ALL FIXTURE SPECIFICATIONS, WIRING, AND POWER REQUIREMENTS.
2. *** WITHIN THE CEILING ELEVATION TAG DENOTES INSTALLATION OF R-13 SOUND BATT ABOVE CEILING

KEYNOTES

1. FAN "M" FIXTURE LOCATIONS TO BE VERIFIED WITH OWNER IN FIELD. OWNER TO VERIFY MOUNTING METHOD / DROP DOWN FROM CEILING HEIGHT PER FIXTURE BASED ON EXISTING CEILING. COORDINATE WITH MECHANICAL. TYPICAL 10'-0" AFF.
2. CONTRACTOR MUST COORDINATE AN ONSITE MEETING WITH OWNER TO APPROVE FINAL "B" FIXTURE LAYOUT AND HEIGHTS PRIOR TO INSTALL. TYPICAL 8'-8" AFF.
3. GC TO INSTALL "D" FIXTURES ON STEM MOUNTS. COORDINATE FINAL HEIGHTS WITH FAN HEIGHTS WITH OWNER.
4. ALL SCONCES TO BE INSTALLED @ 6'-8" AFF U.O. VERIFY FINAL SCONCE SELECTION FOR ADA CLEARANCE. REFER TO ELEVATIONS FOR HEIGHTS. PROVIDED BY OWNER. INSTALLED BY GC. LOWEST POINT OF FIXTURE PROTRUDING MORE THAN 4" TO BE MOUNTED NO LOWER THAN 6'-8" AFF FOR ADA COMPATIBILITY. ELECTRICAL CONTRACTOR TO INSTALL MALE CHORE CAP ON OWNER FURNISHED TYPE "Q" LAMP FIXTURE.
5. CUSTOM "H" BARISTA FIXTURE TO BE CENTERED ON BARISTA MILLWORK BELOW. SEE LIGHT FIXTURE SCHEDULE AND SHEET A802 F.M.I.
6. GC TO PROVIDE UNISTRUT FOR FLEXIBILITY OF COMMUNAL TABLE "C" FIXTURES. UNISTRUT TO BE TIGHT TO DECK AND PAINTED PT2.
7. SPEAKERS BY OTHERS. COORDINATE SOUND ISOLATION WITH SOUND TECHNICIAN. GC TO COORDINATE WITH CLIENT FOR EXACT LOCATION AND QUANTITIES. SPEAKERS TO BE HUNG AS TIGHT TO THE CEILING AS POSSIBLE - COORDINATE WITH OWNER.
8. ALL DOWNLIGHTING TO BE PLACED ON A SEPARATE SWITCH. COORDINATE SWITCHING LOCATION WITH OWNER IN FIELD.
9. ALL EXPOSED CONDUIT TO BE RUN TIGHT AND NEAT TO CEILING WHERE EXPOSED. GC TO PAINT PT2.
10. GC TO FINALIZE FINAL SOFFIT HEIGHT WITH BASE BUILDING'S MEPS. COORDINATE FINAL HEIGHT WITH ARCHITECT.
11. MAIN COUNTER AND BARISTA SOFFITS TO ALIGN WITH THE COUNTERS BELOW.
12. DROPPED GWB CEILING ACCESS PANELS FOR MECHANICAL UNITS WITHIN LOWERED CEILING. COORDINATE WITH ENGINEERING DRAWINGS FOR ACCESS REQUIREMENTS ACCESS PANELS SHALL BE "STEALTH" BY WINDOW AS STANDARD OR APPROVED EQUAL. SIZE AND QUANTITIES AS REQUIRED.
13. GC TO CARRY ALLOWANCE TO FURNISH AND INSTALL TECTUM SHEETS AT THE UNDERSIDE OF DECK ABOVE THROUGHOUT THE DINING ROOM CEILING. PAINT THEM PT2. GC TO REVIEW WITH OWNER QUANTITY & LOCATION BASED ON FINAL RCP AND MECHANICAL LAYOUTS.
14. ALL GWB CEILINGS/SOFFITS, AND ALL OTHER ITEMS ASSOCIATED WITH THE CEILING, INCLUDING PIPES, DUCTS, ETC. TO BE FIELD PAINTED PT2.
15. WS1 - WINDOW SHADES LOCATED AT DESIGNATED WINDOWS. ALL SIZING AND MOUNTING REQUIREMENTS TO BE VERIFIED IN FIELD. LI APPROVAL REQUIRED PRIOR TO INSTALL. SEE MISC. SCHEDULE F.M.I.
16. ENGINEERS TO COORDINATE "K" FIXTURE FOR EMERGENCY LIGHT CIRCUITING. SEE MEP DRAWINGS F.M.I.
17. ACT CEILING TO ABUT WALK-IN COOLER.
18. COORDINATE COOLER HEIGHT WITH CEILING. LIGHTING BY COOLER MANUFACTURER. COORDINATE CEILING TRIM PIECE WITH FINAL COOLER SHOP DRAWINGS.
19. GC TO COORDINATE ALL HOOD VENTS FOR EQUIPMENT WITH ENGINEERING DRAWINGS. GC TO COORDINATE CEILING GRID WITH HOOD LOCATIONS.
20. HOOD AND HOOD LIGHTING BY KITCHEN VENDOR. GC TO COORDINATE WITH KITCHEN VENDOR.
21. GC / ENGINEER TO PROVIDE CIRCUIT / ELECTRICAL CONNECTION FOR EXTERIOR SIGNAGE ILLUMINATION. SIGNAGE TO BE ON PHOTOCELL.
22. G.C. TO COORDINATE INSTALLATION OF WALK-IN BOX CEILING LAYOUT WITH FOOD SERVICE CONSULTANT. PROVIDE HEADERS OR PANELS AS REQUIRED NO GAPS PERMITTED
23. LOCATION OF FOOD SERVICE PROVIDED EXHAUSTHOOD. COORDINATE CEILING WITH PARTITION FRAMERS. MAKE-UP AIR GRILL TO HAVE 1/4" MAX. REVEAL BENEATH FINISHED FACE OF DRYWALL. CEILING G.C. TO ENSURE ANCILLARY PANEL OPENS UNOBSTRUCTED.
24. LINE DENOTES 2-HOUR WALL SEPARATION
25. INSTALLER MUST CONFIRM HOOD IS INSTALLED AS SUCH THAT THE SPECIFIED WALL, ACTING AS AN END PANEL, IS MATED TIGHT TO THE CORRECT END OF HOOD TO ACHIEVE REDUCED MINIMUM EXHAUST CFM LISTING. NON-COMPLIANCE WILL NULLIFY THE ETL LISTING. VOID THE MANUFACTURER'S WARRANTY AND HOLD THE GC LIABLE FOR ANY AND ALL LOSSES, COSTS, AND EXPENSES RELATED TO THE NON-COMFORMANCE OF THE MANUFACTURER'S SPECIFIED INSTRUCTIONS. THE WALL ACTING AS AN END PANEL MUST EXTEND NO LESS THAN 20" UNDER BOTTOM OF HOOD TO BE ELIGIBLE FOR REDUCED MINIMUM OF "M" LISTING.
26. EXISTING BEAM HEIGHTS TO BE VERIFIED AND CONFIRMED BY GC IN FIELD
27. NEW 2'X2' ACOUSTICAL CEILING TILE IN BACK OF HOUSE AREA. REFER TO FINISH SCHEDULE.
28. NEW GREENBOARD GYPSUM BOARD CEILING IN TOILET ROOM. GREENBOARD CERTIFIED.
29. NEW GYP. BD. SOFFIT TO BE 8'-0" A.F.F. (TYP) FOR ADA RESTROOM
30. NEW GYP. BD. SOFFIT TO BE 8'-0" A.F.F. (TYP) FOR RESTROOM CORRIDOR
31. GENERAL CONTRACTOR RESPONSIBLE FOR HOOD LIGHTING HOOK UP.
32. GC TO PROVIDE ALLOWANCE FOR FIVE (5) ADDITIONAL ACCESS PANELS AS REQUIRED TO ACCESS ANY BASE BUILDING VALVES AND/OR OTHER REQUIRED ACCESS. COORDINATE AS REQUIRED WITH BASE BUILDING ENGINEERS. ACCESS PANELS SHALL BE "STEALTH" BY WINDOWLOCK
33. GC SHALL PROVIDE UNIT PRICE FOR ADDITIONAL WINDOWLOCK STEALTH ACCESS PANELS AS REQUIRED
34. SIGNAGE. REFER TO SIGNAGE DRAWINGS BY OTHERS.
35. PROVIDE OCCUPANCY SENSOR AS PER NYCCEC 505.2.2.1. EXCEPTION IS MADE FOR AREAS CONTROLLED BY OCCUPANCY SENSORS
36. G/EC SHALL LOCATE SWITCH BANKS AND ALL LIGHTING WITHIN PREMISES AT A LOCATION DETERMINED BY CLIENT OR BY NEW SWITCH BANK.
37. LIGHT FIXTURES WITHIN 15'-0" OF EXTERIOR WALLS SHALL BE CONTROLLED AS PER NYCCEC 505.2.2.3 (DAYLIGHT CONTROL ZONE).
38. LIGHTING BY WALK-IN-BOX MANUFACTURER.
39. ELECTRIC AIR CURTAIN - REFER TO MECHANICAL DRAWINGS
122. SCONCES ON CONCRETE COLUMNS TO HAVE REMOTE JUNCTION BOX AT CEILING ABOVE. ALL ELECTRICAL CONDUIT TO BE RUN TIGHT AND NEAT EXPOSED ON COLUMN.
123. ALL EXPOSED DUCTWORK AT THE FRONT OF HOUSE OPEN CEILING TO BE ROUND DUCT AND FIELD PAINTED PT2. DESIGN TEAM TO DECIDE ON THE COLOR OF PIPES AND CONDUIT
124. EXISTING CONCRETE CEILING AND BEAMS TO REMAIN EXPOSED. GC TO WASH AND STRIP ALL CONCRETE BEAMS AND CEILING OF EXISTING FINISHES. GC TO REMOVE ALL UNUSED HANGERS, DEVICES, ETC. FROM OPEN CEILING. FIRE PROTECTION AND FIRE STOPPING SHALL REMAIN.
125. BULKHEAD AT 6'-0"
126. GC/ENGINEER TO PROVIDE CIRCUIT/ELECTRICAL CONNECTION FOR EXTERIOR BLADE SIGNAGE ILLUMINATION. SIGNAGE TO BE ON PHOTOCELL.

GENERAL NOTES

1. FINAL HEIGHTS TO BE DETERMINED IN FIELD WITH OWNER.
2. CENTER LIGHTS, EXIT LIGHTS, SPRINKLER HEADS, ETC. ON CEILING TILE UNLESS OTHERWISE NOTED.
3. ALL ACOUSTICAL CEILING TILES ARE NOT TO BE CUT LESS THAN 3" (TYP).
4. ALL REQUIRED GWB ACCESS PANEL FOR BASE BUILDING MEP TO BE COORDINATED.
5. ALL ACCESS PANELS, SPEAKERS, REGISTERS, AND DIFFUSERS IN CEILINGS TO BE PAINTED SAME COLOR AS CEILING. U.O.
6. ALL ACCESS PANELS IN GWB CEILINGS TO BE TAPE-IN.
7. ALL SPRINKLER HEADS IN FRONT OF HOUSE CEILINGS TO BE CONCEALED, AND SEMI-RECESSED IN ALL OTHER AREAS. COORDINATE WITH ENGINEERING.
8. ALL WOOD MEMBERS AND SURFACES TO BE FIRE-TREATED/FIRE-RATED.
9. GC TO REVIEW FINAL LIGHT FIXTURE LOCATIONS WITH TENANT AND ARCHITECT PRIOR TO INSTALLATION.
10. ALL DIMENSIONS TO CENTERLINE OF FIXTURE U.O.
11. CONFIRM MOUNTING HEIGHTS OF PENDANT FIXTURES WITH OWNER / ARCHITECT PRIOR TO INSTALLATION.
12. ALL AV EQUIPMENT & ASSOCIATED DEVICES BY OTHERS. GC TO CARRY AN ALTERNATE FOR PULLING ALL THE WIRE CONNECTIVITY. COORDINATE WITH EXISTING.
13. ALL SPRINKLER HEADS COLOR TO MATCH CEILING COLOR. GC TO COORDINATE COLORS WITH ARCHITECT PRIOR TO PURCHASE AND INSTALL.
14. CHECK WITH MECHANICAL FOR ANY INTERFERENCE. GC TO CARRY ALLOWANCE FOR ANY SPRINKLER LINES THAT REQUIRE RELOCATION. GC TO COORDINATE WITH ENGINEER DRAWINGS.
15. ALL LIGHTING SYMBOLS ARE SHOWN FOR REFERENCE ONLY. REFER TO SPECIFICATIONS FOR MORE INFORMATION.
16. COORDINATE SPEAKER LOCATIONS WITH CLIENT. LOW VOLTAGE CONSULTANT, AND A CONNECTION TO HEAD UNIT. SPEAKERS SHALL BE TIED INTO THE FIRE ALARM SYSTEM. REFER TO ENGINEER DRAWINGS F.M.I.
17. IN EXPOSED CEILINGS, ALL FIRE-PROOFING THAT IS MISSING / DAMAGED TO BE REPLACED WITH THE SAME RATING / PRODUCT AS THE EXISTING FIRE PROOFING.
18. GC TO VERIFY REUSE / RELOCATION / NEW REQUIRED EGRESS SIGNS AND ACCESSORIES.
19. GC TO VERIFY IN FIELD CEILING MOUNTED DATA FOR WIP LOCATIONS.
20. ALL GWB CEILINGS / SOFFITS, AND ALL OTHER ITEMS ASSOCIATED WITH THE CEILING, INCLUDING PIPES, DUCTS, ETC. TO BE FIELD PAINTED PT2.
21. GC TO IDENTIFY AREAS WITH CEILING WITH REQUIRED ACCESS POINTS. GC TO COORDINATE WITH ARCHITECT FOR ACCESS PANELS WITHIN NEW GWB CEILINGS
22. SEE LIFE SAFETY SHEET FOR FIRE RATING OF BUILDING COMPONENTS. GC RESPONSIBLE FOR PATCHING / REPAIRING OF THE FIRE-PROOFING SYSTEMS WHERE NEW CONNECTIONS, PENETRATIONS, ETC. ARE MADE.
23. WHERE CEILINGS ARE INDICATED TO BE GYP. BD., PROVIDE 5/8" GYPSUM BOARD ON METAL STUD FRAMING OR SUSPENDED CEILING SYSTEM. PROVIDE CEILING GYP. BD. CONTROL JOINTS PER MANUFACTURER'S RECOMMENDATIONS U.O.
24. VERTICALLY STACK LIGHT SWITCHES, THERMOSTATS, AND LIFE SAFETY DEVICES TO THE GREATEST EXTENT POSSIBLE
25. CEILING HEIGHTS NOTED ARE FROM TOP OF FINISHED FLOOR (A.F.F.) TO UNDERSIDE OF FINISHED CEILING. U.O.
26. THE DIMENSIONS AND WORK NOTED ON THESE DRAWINGS ARE INDICATED FOR DESIGN INTENT. IF THE INSTALLATION OF ELECTRICAL, MECHANICAL, PLUMBING, OR FIRE PROTECTION WORK INTERFERES WITH THIS INTENT, THE ARCHITECT SHALL BE NOTIFIED PRIOR TO PROCEEDING WITH CONSTRUCTION.
27. SEE PARTITION TYPE DETAIL SHEET FOR TYPICAL DEVICE MOUNTING HEIGHT IN INFORMATION.
28. REFER TO ENGINEERING DRAWINGS FOR ALL CIRCUITING AND SWITCHING INFORMATION. ARCHITECTURAL DRAWINGS TO DICTATE QUANTITIES ONLY. IF DISCREPANCY OCCURS, NOTIFY ARCHITECT PRIOR TO PROCEEDING WITH CONSTRUCTION.
29. REFER TO FINISH SCHEDULE FOR FURTHER SPECIFICATION OF CEILING MATERIALS AND FINISHES.
30. G.C. TO VERIFY AND COORDINATE ALL CONDITIONS IN FIELD PRIOR TO START OF WORK, INCLUDING ELECTRICAL PANEL CAPACITY, LOCATIONS, AND CLEARANCES AT MECHANICAL DUCTS, ELECTRICAL ITEMS, SPRINKLERS, AND ASSOCIATED PIPING. ANY CONFLICTS ARE TO BE BROUGHT TO THE ATTENTION OF THE ARCHITECT AND ENGINEER AT THE EARLIEST OPPORTUNITY.
31. RETURN TO ELECTRICAL AND MECHANICAL DRAWINGS FOR LOCATION OF SUPPLY AND RETURN AIR DIFFUSERS, THERMOSTATS, EXIT SIGNS, AND LIFE SAFETY EQUIPMENT.
32. ACT AND GRID TO BE CENTERED IN ROOMS U.O.
33. SPRINKLER HEADS, LIGHT FIXTURES, DIFFUSERS, AND ETC. TO BE CENTERED WITHIN ACT, U.O. G.C. TO VERIFY SECURITY CAMERA LOCATIONS WITH OWNER'S VENDOR AND COORDINATE WITH ARCHITECT.
34. HVAC DIFFUSERS, EQUIPMENT ACCESS PANELS & HATCHES, SPRINKLER HEAD ESCUTCHEON PLATES, EMERGENCY LIGHT FIXTURES, SMOKE DETECTORS, SECURITY FEATURES, AUDIO DEVICES, ETC TO MATCH ADJACENT CEILING FINISH U.O. SUBMIT LOCATIONS, FINISHES & STYLES OF ALL CEILING FIXTURES TO ARCHITECT FOR APPROVAL PRIOR TO PURCHASING OR CONSTRUCTION.
35. ALL SPRINKLER HEAD LOCATED IN CLOSED CEILING IN VIEW OF PUBLICS AREAS SHALL BE RECESSED AND CONCEALED WITH AN ESCUTCHEON PLATE.
36. G.C. TO COORDINATE LOCATION OF ALL EQUIPMENT ACCESS PANELS & HATCHES WITH NECESSARY EQUIPMENT. CEILING OR PARTITION FEATURES, LIGHTING, AND OTHER EQUIPMENT. SUBMIT TO ARCHITECT FOR APPROVAL PRIOR TO COMMENCING WITH WORK.
37. NOTIFY ARCHITECT OF ANY DISCREPANCIES OR CONFLICTS THAT INTERFERE WITH THE DESIGNER INTENT PRIOR TO INSTALLATION OF EQUIPMENT OR SERVICES.
38. ALL ELECTRICAL CONDUIT, WIRING, PLUMBING LINES, AND OTHER SERVICES TO BE ROUTED THROUGH CLOSED CEILING, FRAMED WALLS, FAUX BEAMS, ETC. AS NECESSARY TO CONCEAL FROM VIEW.
39. G.C. TO COORDINATE THE CEILING FRAMING AROUND SUCH ITEMS AS THE HOOD AND WALK-IN COOLER BOX. THE HOOD SUPPLY PLENUM SHOULD HAVE A 1/4" REVEAL BELOW FINISHED CEILING HEIGHT.
40. SECURITY CAMERA SCOPE AND LOCATION BY SECURITY TEAM. GENERAL CONTRACTOR TO COORDINATE AS REQUIRED.
41. SPEAKER SCOPE AND LOCATION BY AUDIO VENDER.
42. THE G.C. SHALL CUT, REMOVE, PATCH, AND/OR REPLACE THE EXISTING GYPSUM BOARD CEILING(S) TO ALLOW FOR ADJACENT DEMOLITION AND CONSTRUCTION AS REQUIRED.
43. AT MECHANICAL ROOM #110, THE G.C. SHALL SCRAPE EXISTING PLASTER CEILING SMOOTH, PATCH, FIRESTOP, AND REPAINT (WHITE).
44. ALL NEW GYPSUM BOARD CEILINGS SHALL BE FLUSH AND SMOOTH WITH EXISTING ADJACENT CEILING (U.O.N.)
45. ENTIRE EXPOSED CEILING SLAB SHALL BE PATCHED AND PREPARED AS REQUIRED IN ORDER TO RECEIVE NEW FINISHES.
46. THE G.C. SHALL FIRE PROOF ANY EXPOSED STRUCTURAL STEEL BEAMS WITH A CEMENTITIOUS NON-ASBESTOS SPRAY-ON OR TROWELED FIRE PROOFING AS REQUIRED. MONKOTE OR APPROVED EQUAL 2 HOUR RATING MINIMUM.
47. REFER TO MECHANICAL ENGINEERING DRAWINGS FOR C.F.M., DIFFUSER, GRILLE, REGISTER AND LOWER SPECIFICATIONS.
48. THE G.C. SHALL REMOVE & RELOCATE ANY EXISTING DUCTWORK, SPRINKLER PIPES, OR ANY OTHER UTILITIES AS REQUIRED, TO ACCOMMODATE NEW CONSTRUCTION.
49. REFER TO MECHANICAL ENGINEERING DRAWINGS FOR ALL MECHANICAL SPECIFICATIONS.
50. THE G.C. SHALL INSTALL ALL SPRINKLER HEADS AS REQUIRED SO THAT THEY ARE RECESSED AND FLUSH WITH NEW CEILINGS.
51. REFER TO ENGINEERING DRAWINGS FOR NEW CLASS 'E' SYSTEM.
52. THE EXISTING CLASS 'E' SYSTEM SHALL REMAIN OR BE RELOCATED TO THE GREATEST EXTENT POSSIBLE. ANY SPEAKERS, STROBES, ETC. REMOVED DURING THE COURSE OF CONSTRUCTION SHALL BE REMOUNTED AS REQUIRED. REPLACE ALL FIRE ALARM DEVICES WITH NEW (U.O.N.) REFER TO FIRE ALARM DRAWINGS.
53. THE G.C. SHALL PROVIDE NEW CLASS 'E' SPEAKER AND STROBE SYSTEM CONFORMING TO LOCAL LAW. (REFER TO FIRE ALARM DRAWINGS)
54. ALL EXISTING EXT SIGNS SHALL BE NEW.
55. ALL EXISTING LIGHT SWITCHES SHALL BE REMOVED.
56. ALL NEW LIGHT SWITCHES SHALL BE RECESSED MOUNTED AT 3'-2" A.F.
57. ALL NEW LIGHT SWITCHES AND COVER PLATES SHALL BE 'LEVITON' DECORA SERIES. COLOR TO BE DETERMINED.
58. ALL NEW LIGHT DIMMER SWITCHES AND COVER PLATES SHALL BE 'LEVITON' DECORA SERIES. COLOR TO BE DETERMINED.
59. ALL NEW LIGHT SWITCHES SHOWN ON EXISTING MASONRY WALLS SHALL BE RECESSED MOUNTED. THE EXISTING MASONRY WALL OR COLUMN SHALL BE CHOPPED AND REPAIRED AS REQUIRED.
60. ALL LED LAMPS SHALL BE 2700K. (U.O.N.) REFER TO LIGHT FIXTURE SCHEDULE ON SHEET A-011.
61. UNLESS OTHERWISE NOTED, ALL NEW LIGHT FIXTURES SHALL BE INSTALLED AT SAME HEIGHT AS EXISTING ADJACENT LIGHT FIXTURE.
62. THE G.C. SHALL MAINTAIN A MINIMUM OF 1" CLEARANCE BETWEEN THE LIGHT FIXTURE AND ANY COLUMN, SOFFIT, EXPOSED DUCT AND/OR PARTITION.
63. ALL RECESSED LIGHT FIXTURES SHALL BE SET FLUSH WITH CEILING GRID/GYPSUM BOARD CEILING.
64. WHERE BEAMS, PIPES, DUCTS OR OTHER CONSTRUCTION DETAILS PREVENT THE USE OF STANDARD RECESSED LIGHTING FIXTURES, MATCHING SHALLOW RECESSED FIXTURES SHALL BE PROVIDED BY THE CONTRACTOR.
65. THE G.C. SHALL SUBMIT A COMPLETE SET OF SHEET METAL SHOP DRAWINGS. SHOW DRAWING SHALL CHECK ALL CEILING HEIGHTS AND PLENUM CONDITIONS FOR CLEARANCE OF DUCTWORK, LIGHTING AND OTHER OBSTRUCTIONS TO ASSURE FINISHED CEILING HEIGHTS SHOWN ON DRAWINGS ARE ACHIEVED. ANY DEVIATIONS SHALL BE BROUGHT TO NEW YORK DESIGN'S ATTENTION FOR REVIEW. APPROVED, AND FURTHER DIRECTION AS REQUIRED TO ACHIEVE DESIGN INTENT.
66. THE G.C. SHALL SUBMIT ALL REQUIRED SHOP DRAWINGS AND SUBMITTALS FOR ARCHITECT'S REVIEW AND APPROVAL.
67. ANY EXISTING FIRE ALARM DEVICES TO REMAIN SHALL BE INSPECTED BY THE GENERAL CONTRACTOR, ELECTRICAL CONTRACTOR, AND FIRE ALARM VENDOR. REPLACE ALL DEVICES THAT ARE NON-OPERABLE AS REQUIRED.
68. ALL RECESSED SPRINKLER CAPCOVERS SHALL BE FACTORY PAINTED AS REQUIRED TO MATCH CEILING WHERE INSTALLED.
69. ANY STEMS OR CONDUIT REQUIRED FOR INSTALLATION OF LIGHT FIXTURES, EXIT SIGNS, EMERGENCY LIGHT, FIRE ALARM DEVICES, ETC. SHALL BE PAINTED AS REQUIRED TO MATCH ADJACENT SURFACES.
70. THE GENERAL CONTRACTOR SHALL SUBMIT A BALANCING REPORT ALONG WITH ANY SUBMITTALS AS REQUIRED FOR SPECIAL INSPECTION SIGN-OFF.

AUDIO SYSTEM COMPONENTS

BOSE DESIGNMAX DM5P WHITE - 5.25" PENDANT SPEAKER

LEA PROFESSIONAL 4 CHANNEL DANTE AMPLIFIER WITH EQ

LEA PROFESSIONAL CONNECT WALL MOUNT CONTROLLER-POE-WHITE

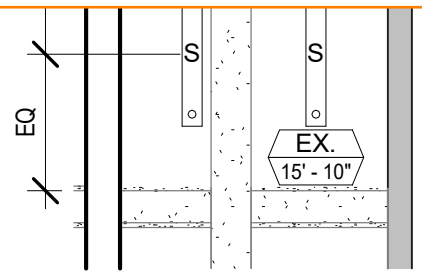
ARAKNIS 320 SERIES 8-PORT SWITCH WITH FULL POE+ AND REAR PORTS

LOWELL RACK WALL 18.375"H X 19.05"D X 23.06"W

LOWELL RACK PANEL VENTED 1RU 35% OPEN AREA, BLACK

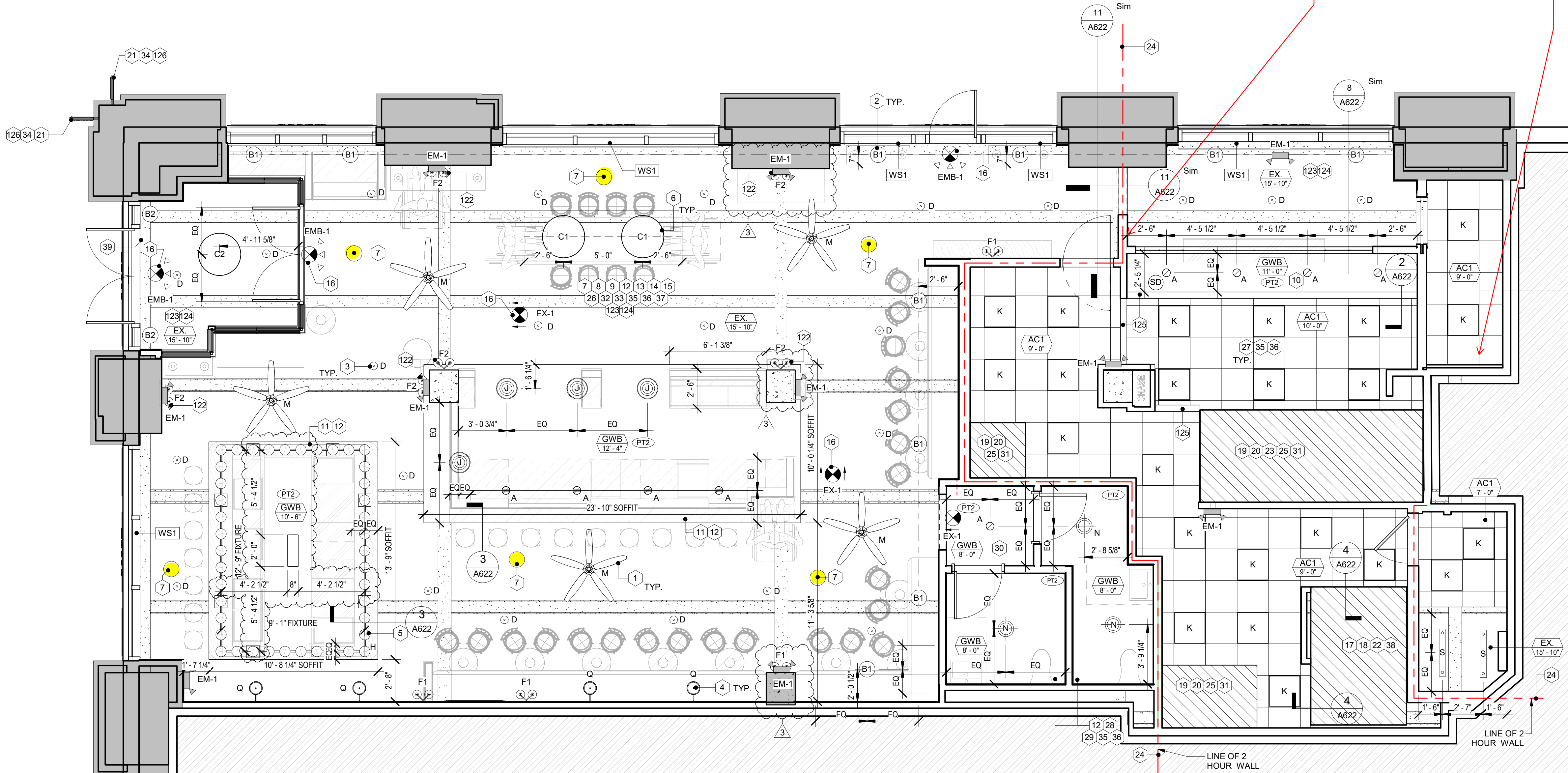
LOWELL RACK SHELF VENTED 1RU 10D

FURMAN 20 AMP PWR CONDITIONER



REFLECTED CEILING PLAN

1/4" = 1'-0"



PROJECT APPROVALS:

PROJECT ADDRESS:

Tatte
BAKERY & CAFÉ
315 PARK AVE SOUTH
NEW YORK, NY 10010

PROJECT TEAM:

PROPERTY OWNER
COLUMBIA PROPERTY TRUST
315 PARK AVE SOUTH, NY 10010
DANA DI NOLFO
SENIOR PROPERTY MANAGER
(212) 419-7082

TENANT

TATTE BAKERY & CAFÉ
315 PARK AVE SOUTH
NEW YORK, NY 10010

ARCHITECT OF RECORD AND MEP ENGINEER

NEW YORK DESIGN ARCHITECTS
175 WEST BROADWAY
NEW YORK, NY 10013

CAFÉ INFO:

MARKET: NYT
CAFÉ NAME: GRAMERCY

DESIGN MILESTONES:

ID	RELEASE	DATE
1	SHELL PACKAGE	05/07/2025
2	90% AOR REVIEW	-
3	ENGINEERING COORD.	-
4	PERMIT SET	-

PROJECT REVISIONS:

NO.	DESCRIPTION	DATE
1	ISSUED FOR CONSTRUCTION	08/15/25
2	IFC SET - BULLETIN 01	08/22/25
3		
4		

PROJECT SEAL:

new york design architects
ARCHITECTS

GIUSEPPE R. ANZALONE, A.I.A.
JOSEPH J. BERNIERA, A.I.A.
175 WEST BROADWAY, NEW YORK, NY 10013
TEL: 212-680-0140 | FAX: 212-680-9548

LICENSE #
EXPIRATION DATE: 12/31/2025

PROFESSIONAL CERTIFICATION: I HEREBY CERTIFY THAT THESE DOCUMENTS WERE PREPARED UNDER MY DIRECT SUPERVISION, AND THAT I AM A DULY LICENSED PROFESSIONAL ARCHITECT UNDER THE LAWS OF THE STATE OF NEW YORK.

LEGAL: These plans and specifications, as well as New York Design Architects, LLP's name and logo, trademarks and designs are the sole property of New York Design Architects, LLP. Any reproduction, modification, disclosure and/or use of these materials (or any portion of them) without prior written consent is strictly prohibited. Contractor and/or subcontractor shall not scale off these drawings for any reason. The architect/engineer of record shall not be responsible for work being performed by scaling off drawings. All dimensions shall be set out in accordance to building department approved drawings. Any discrepancies with field dimensions and dimensions indicated on approved drawings, this document is protected under title 17 U.S. Code, as amended by any statute other than the author of such document in flag and subject to prosecution.

PROJECT INFORMATION:

PROJECT #: ZV006
DRAWN BY: WW
PROJECT MANAGER: EDG
PARTNER IN CHARGE: -

SHEET TITLE:

REFLECTED CEILING PLAN

SHEET NUMBER: PAGE #:
A3111.00 **15 OF 33**

DOB APPROVAL(S):

DOB BAR CODE:

M01253424-11