

Todd Burch Hall Low Voltage Rewire Project

LCC is requesting quotes that include all materials, labor, coordination, design work, equipment costs, installation, configuration, labeling, adjustments, testing, and certification for the following work.

- Run new CAT6 cables from each IDF closet through under floor crawl space with penetration into each dorm room for each building (TBH West and TBH East).
 - Room penetrations to be done while TBH dorm rooms are available approximately May 5th through early August.
 - Under floor crawl space runs can be done at any time prior to August.
 - Need 1 drop per room with keystone jack and LV box.
- Run new CAT6 cables from each IDF closet through Panduit or similar conduit along the ceilings for each hallway.
 - 6 drops per hallway (2 at North end, 2 at South end, and 2 in the middle) per floor per building (5 hallways/30 total drops).
 - Each drop needs to be terminated with an RJ-45 connector.
- Replace fiber connecting each IDF with single mode fiber leaving an extra two pairs of unused fiber on each cable.

Room counts:

TBH W – 1st Floor – 15 Dorm Rooms + RA, Comp Lab, Sec

TBH W – 2nd Floor – 20 Dorm Rooms

TBH E – 1st Floor – 20 Dorm Rooms

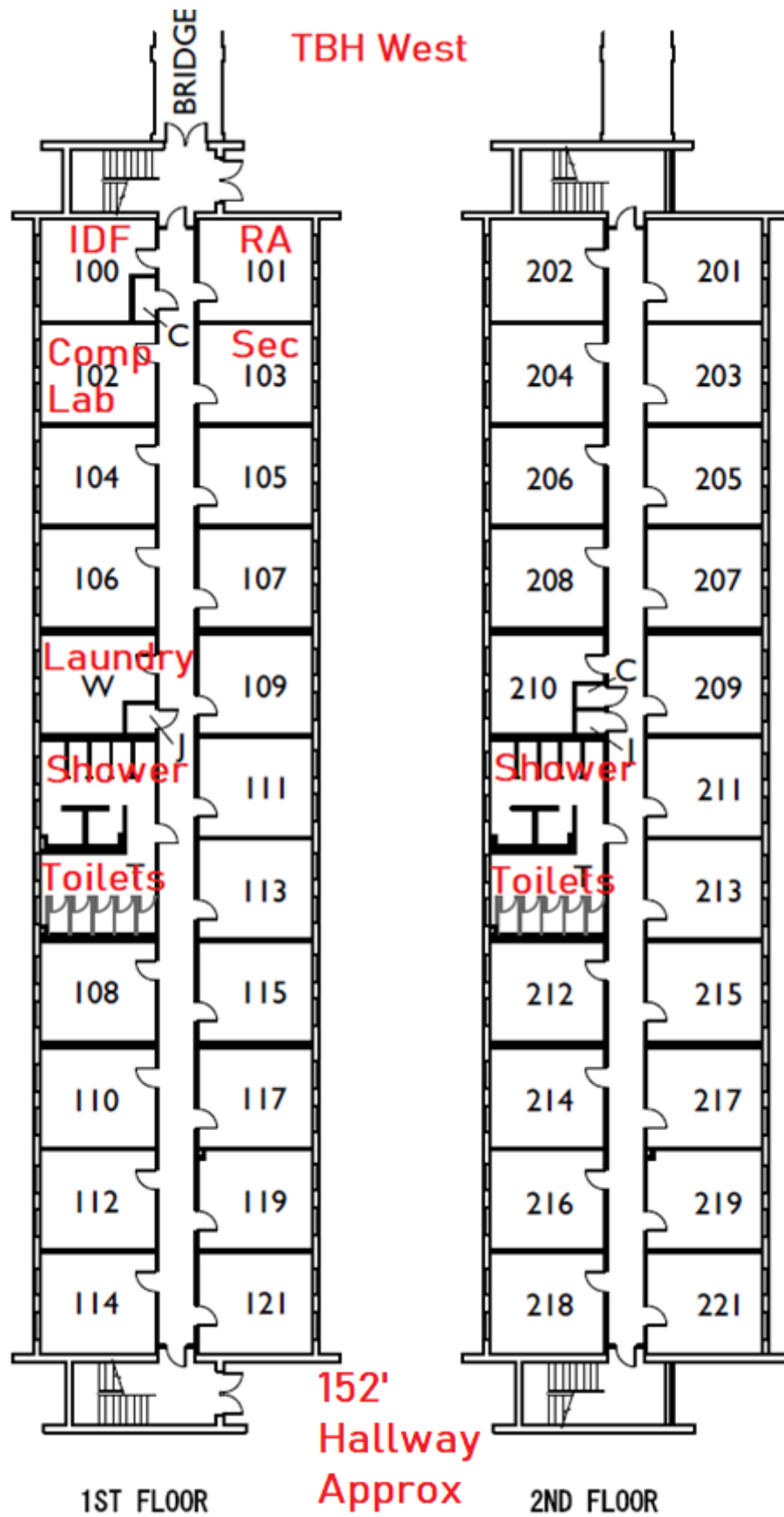
TBH E – 2nd Floor – 22 Dorm Rooms

TBH E – 3rd Floor – 20 Dorm Rooms + 2 areas that are parts of ‘suites’ we will run a cable to.

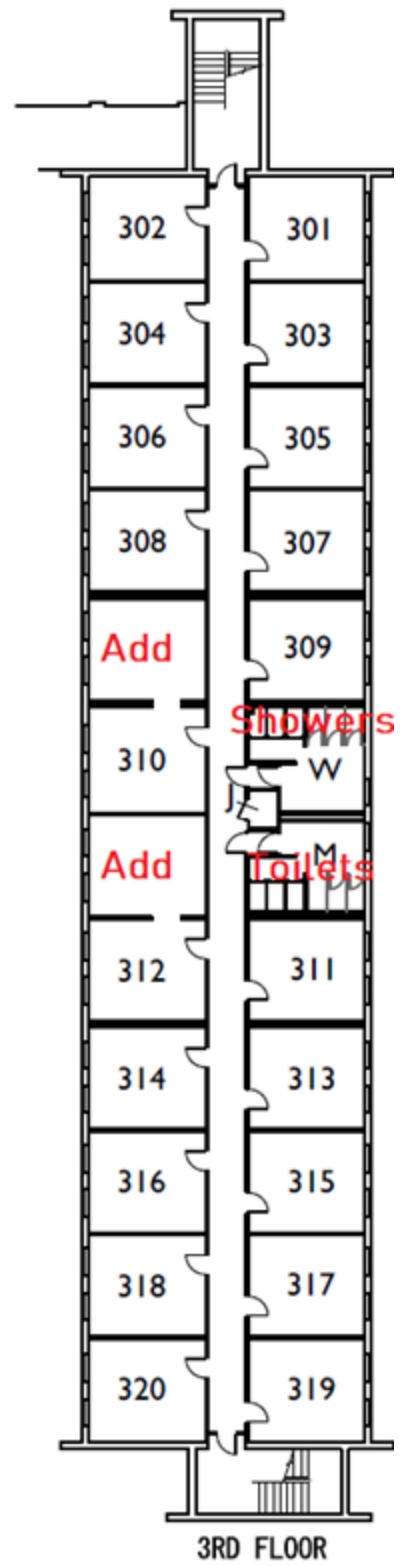
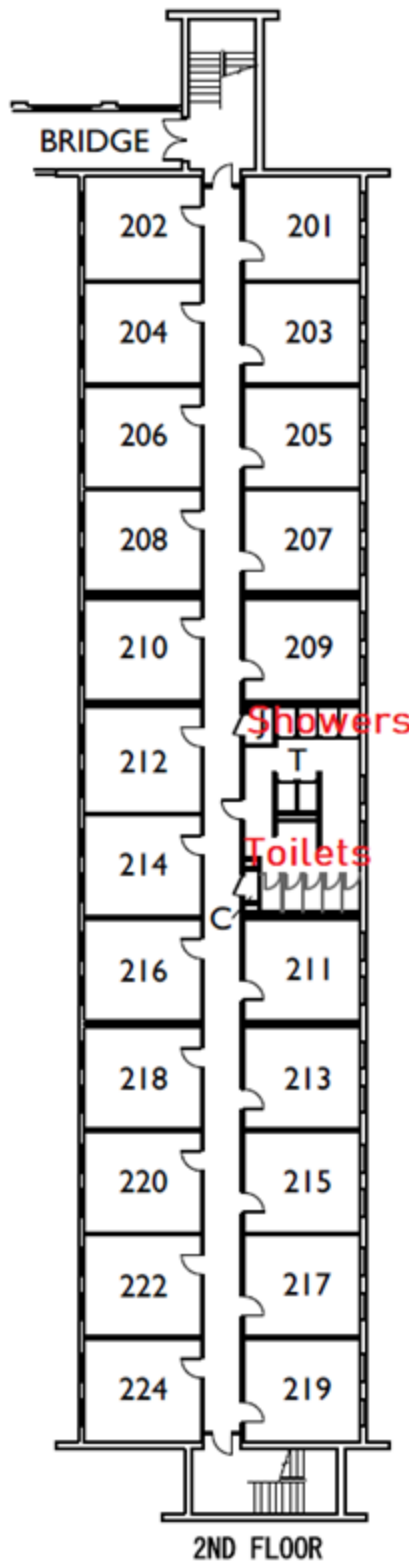
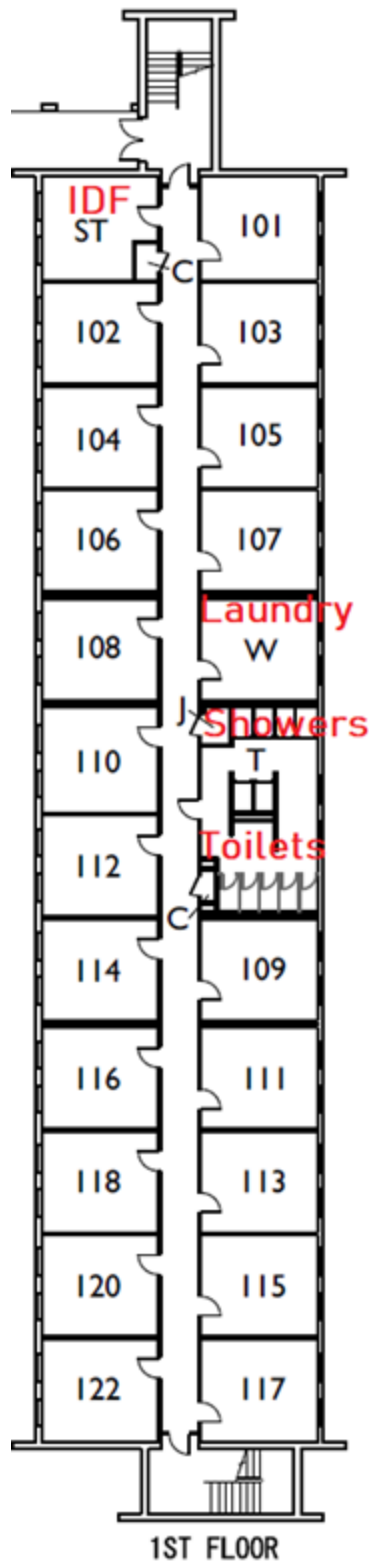
Label, test, and certify all cables.

Use hanging cable supports in crawl spaces.

Between room raceways use Wiremold 2000 Series Raceway Base and Cover or similar in function/longevity.



TBH East



167' Hallways Approx