

RNL

1515 ARAPAHOE STREET
TOWER III, SUITE 700
DENVER, COLORADO 80202
303 295 1717 t
303 292 0845 f

Technology Plus
INCORPORATED

COMMUNICATIONS TECHNOLOGY PLANNING
Aurora, Colorado 80012
Ph: 303-340-8228
Fax: 303-340-8233

RNL - ARCHITECT
RNL - LANDSCAPE ARCHITECT
RNL - MECHANICAL PLUMBING ELECTRICAL
SA MIRO - STRUCTURAL ENGINEER
LUND PARTNERSHIP - CIVIL ENGINEER
TECHNOLOGY PLUS - COMMUNICATIONS

CITY OF COMMERCE CITY
CIVIC AND JUSTICE CENTER

7887 EAST 60TH AVENUE
COMMERCE CITY, COLORADO 80022

FOR CONSTRUCTION	05.15.06
Technology Coordination	03.20.06
DESIGN DEV - GMP	01.06.06
SCHEMATIC DESIGN	10.07.05

PROJECT No: 1021-1895-02
DATE: 1.06.06
SCALE: AS SHOWN

COMMUNICATIONS
Structured Cabling Plan

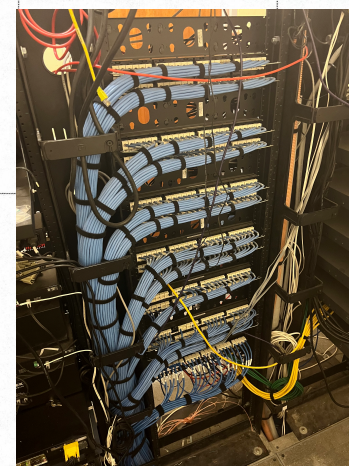
T101B

GENERAL NOTES - CABLING

1. TC TO PROVIDE TELECOMMUNICATIONS BASKET TRAY AND J-HOOK SUPPORT FOR NETWORK CABLING. TC TO PROVIDE SEPARATE J-HOOK SUPPORT FOR SECURITY CABLING. KEEP MINIMUM 6" SEPARATION FROM NETWORK CABLING.
2. ALL NETWORK CABLING TO BE PLENUM RATED UON. REFER TO SPECS FOR CABLE TYPES AND COLORS.
3. TC TO PROVIDE ALL SECURITY AND CCTV CABLING. REFER TO ONE-LINE DRAWING FOR TYPES. SECURITY DEVICES AND FINAL HOOK-UP BY SECURITY CONTRACTOR.
4. TC TO PROVIDE ALL INTERCOM/PAGING CABLING. REFER TO ONE-LINE DRAWING FOR TYPES. INTERCOM AND PAGING DEVICES AND FINAL HOOK-UP BY SECURITY CONTRACTOR.
5. TC TO PROVIDE NETWORK CABLING FOR AUDIO VISUAL DEVICES. AV CONTRACTOR TO PROVIDE CABLING BETWEEN DEVICES. FINAL EQUIPMENT HOOK-UP BY AV CONTRACTOR.
6. TC TO PROVIDE STAINLESS STEEL WALL PLATES WITH MOUNTING STUDS AND PANDUIT CAT 6 JACK FOR ALL WALL PHONE LOCATIONS.
7. TC TO PROVIDE RG-6 PLENUM COAX FOR TV OUTLETS TERMINATED USING COMPRESSION TYPE F-CONNECTORS. INSTALL F-81 FITTING AT FACEPLATE. FOR RUNS EXCEEDING 150', INSTALL RG-11 PLENUM COAX. ROUTE TO NEAREST TR. TV OUTLETS IN EOC TO ROUTE TO WALL BEHIND EQUIPMENT RACK WITH 15' SLACK.

SHEET NOTES - CABLING

1. EC TO PROVIDE (6) 4" CONDUITS TO STREET FOR TELE/DATA ENTRY. (3) TO EAST AND (3) TO SOUTH.
2. EC TO PROVIDE (3) 4" CONDUIT WITH PULLSTRING STUBBED 8" BELOW CEILING. ROUTE TO DATA CENTER.
3. EC TO PROVIDE (3) 4" CONDUIT SLEEVES STUBBED 8" BELOW CEILING AND STUBBED 4" ABOVE SUB-FLOOR IN 2ND FLOOR HALLWAY ABOVE FOR ROUTING OF 1ST FLOOR SECURITY CABLING.
4. TC TO PROVIDE (1) CAT 6 FOR ELEVATOR EMERGENCY PHONE.
5. PANIC ALARM. MAY BE BUTTON OR INTERCOM DEPENDING ON LOCATION. TC TO ROUTE CABLE FOR DEVICE AS INDICATED ON DRAWING T002.



1 LEVEL 1 STRUCTURED CABLING PLAN AREA "B"
1/8" = 1' - 0"

0 4' 8' 16'
SCALE: 1/8" = 1'-0"