

DOOR HARDWARE

NO	HARDWARE DESCRIPTION	HARDWARE MANUFACTURER & MODEL
A	HINGES	STANLEY FBH179, 4 1/2" x 4 1/2" (1 1/2" PAIR), US260
B	DOUBLE ACTING HINGE	BOMMER #3029, 6" x 4 1/2" (1 1/2" PAIR), US260
C	CLOSER	LCN "SMOOTHER" #4031 X WMS AL (ON HINGE SIDE)
D	OPEN	ROCKWOOD 70C, 4" x 16" PUSH PLATE, US320
E	PUSH PLATE	ROCKWOOD 110 + 70C, PULL PLATE 4" x 16", US320
F	PULL PLATE	ROCKWOOD K1039, 8" x DOOR WIDTH (MINUS 2"), US320
G	KICK PLATE	BEST #1E-7-6-C181-RP1 X L/C, 626
H	MORTISE CYLINDER	BEST #1E-7-6-C181-RP1 X L/C, 626
I	RM CYLINDER	BEST #1E-7-6-C181-RP1 X L/C, 626
J	TURNOVER	BEST #1E-7-6-C181-RP1 X L/C, 626
K	DEADBOLT LOCK	YALE D SERIES DEADBOLTS, D292
L	STOREROOM LEVER LOCKSET	BEST #1E-4, 626
M	CLASSROOM LEVER LOCKSET	BEST #1E-4, 626
N	CLASSROOM LEVER LOCKSET	BEST #1E-4, 626
O	CLASSROOM LEVER LOCKSET	BEST #1E-4, 626
P	CLASSROOM LEVER LOCKSET	BEST #1E-4, 626
Q	CLASSROOM LEVER LOCKSET	BEST #1E-4, 626
R	CLASSROOM LEVER LOCKSET	BEST #1E-4, 626
S	CLASSROOM LEVER LOCKSET	BEST #1E-4, 626
T	CLASSROOM LEVER LOCKSET	BEST #1E-4, 626
U	CLASSROOM LEVER LOCKSET	BEST #1E-4, 626
V	CLASSROOM LEVER LOCKSET	BEST #1E-4, 626
W	CLASSROOM LEVER LOCKSET	BEST #1E-4, 626
X	CLASSROOM LEVER LOCKSET	BEST #1E-4, 626
Y	CLASSROOM LEVER LOCKSET	BEST #1E-4, 626
Z	CLASSROOM LEVER LOCKSET	BEST #1E-4, 626

DOOR & HARDWARE SCHEDULE

DOOR LOCATION	NO	WIDTH	HEIGHT	HEAD & JAMB TYPE	TYPE	KICKPLATE	HARDWARE	REMARKS
VESTIBULE	1	6'-3"	7'-4"	---	---	---	HJ	AUTOMATIC SWING DOORS (STANLEY) THRESHOLD & MOTOR HEADER INCLUDED, EXTERIOR & INTERIOR TRANSOM SUPPLIED AND INSTALLED BY GC.
VESTIBULE	2	6'-3"	7'-4"	---	---	---	HJ	AUTOMATIC SWING DOORS (STANLEY) THRESHOLD & MOTOR HEADER INCLUDED, EXTERIOR & INTERIOR TRANSOM SUPPLIED AND INSTALLED BY GC.
VESTIBULE	3	6'-3"	7'-4"	---	---	---	HJ	AUTOMATIC SWING DOORS (STANLEY) THRESHOLD & MOTOR HEADER INCLUDED, EXTERIOR & INTERIOR TRANSOM SUPPLIED AND INSTALLED BY GC.
VESTIBULE	4	6'-3"	7'-4"	---	---	---	HJ	AUTOMATIC SWING DOORS (STANLEY) THRESHOLD & MOTOR HEADER INCLUDED, EXTERIOR & INTERIOR TRANSOM SUPPLIED AND INSTALLED BY GC.
LOADING DOCK	5	6'-0"	10'-0"	---	---	---	DO	SEE SPEC'S AT PLAN LOCATION THIS SHEET. (2) LOOKS PER DOOR.
EMERGENCY EXIT	6	3'-0"	7'-0"	B	1	1 SIDE	AGPRTY	EXIT SIGN TYPE "B"
EMERGENCY EXIT	7	3'-0"	7'-0"	B	1	1 SIDE	AGPRTY	EXIT SIGN TYPE "B"
ELECTRIC ROOM	8	3'-0"	7'-0"	B	2	---	ACGLZ	ELECTRIC STRIKE BY SDC. DOOR FRAME TO COME READY FOR SDC 45-4S U, 4 1/4" FACE PLATE. SEE DETAIL ON DRAWING C7.
SYSTEMS ROOM	9	3'-0"	7'-0"	B	2	---	ACGLZ	ELECTRIC STRIKE BY SDC. DOOR FRAME TO COME READY FOR SDC 45-4S U, 4 1/4" FACE PLATE. SEE DETAIL ON DRAWING C7.
JANITOR'S CLOSET	10	3'-0"	7'-0"	B	2	1 SIDE	ACEFV	DOOR TO HAVE 1" UNDERCUT.
L.P. OFFICE	11	3'-0"	7'-0"	B	1	1 SIDE	ACGLSV	DOOR TO HAVE 1" UNDERCUT.
MEN'S TOILET	12	3'-0"	7'-0"	B	2	1 SIDE	ACEFV	DOOR TO HAVE 1" UNDERCUT.
WOMEN'S TOILET	13	3'-0"	7'-0"	B	2	1 SIDE	ACEFV	DOOR TO HAVE 1" UNDERCUT.
LOUNGE	14	3'-0"	7'-0"	B	2	1 SIDE	ACGLV	DOOR TO HAVE 1" UNDERCUT.
EMERGENCY EXIT	15	3'-0"	7'-0"	B	1	1 SIDE	AGPRTY	EXIT SIGN TYPE "B"
HALL AT LOUNGE	16	3'-0"	7'-0"	B	2	1 SIDE	ACEFV	DOOR TO HAVE 1" UNDERCUT.
EMERGENCY EXIT	17	3'-0"	7'-0"	B	1	1 SIDE	AGPRTY	EXIT SIGN TYPE "B"
CASH OFFICE	18	3'-0"	7'-0"	B	1	1 SIDE	ACGLSV	DOOR TO HAVE 1" UNDERCUT.
HALL AT CASH	19	3'-0"	7'-0"	B	2	---	ACGLZ	ELECTRIC STRIKE BY SDC. DOOR FRAME TO COME READY FOR SDC 45-4S U, 4 1/4" FACE PLATE. SEE DETAIL ON DRAWING C7.
MANAGER'S OFFICE	20	3'-0"	7'-0"	B	1	1 SIDE	ACGLSV	DOOR TO HAVE 1" UNDERCUT.
MANAGER'S OFFICE	21	3'-0"	7'-0"	B	1	1 SIDE	ACGLSV	DOOR TO HAVE 1" UNDERCUT.
MANAGER'S OFFICE	22	3'-0"	7'-0"	B	1	1 SIDE	ACGLSV	DOOR TO HAVE 1" UNDERCUT.
MANAGER'S OFFICE	23	3'-0"	7'-0"	B	1	1 SIDE	ACGLSV	DOOR TO HAVE 1" UNDERCUT.
FIXTURE STORAGE	24	3'-0"	7'-0"	B	1	1 SIDE	ACGLSV	DOOR TO HAVE 1" UNDERCUT.
MEN'S ADA DRESSING ROOM	25	3'-0"	7'-0"	B	2	1 SIDE	ACEFV	DOOR TO HAVE 1" UNDERCUT.
WOMEN'S DRESSING ROOM	26	3'-0"	7'-0"	B	2	1 SIDE	ACEFV	DOOR TO HAVE 1" UNDERCUT.
PROCESSING ROOM	28	6'-0"	7'-0"	C	3	---	---	---

*OPENING SIZE IS THE ACTUAL SIZE OF THE DOOR UNLESS OTHERWISE NOTED. INTERIOR DOORS ARE TO MEET ADA REQUIREMENTS AND MUST HAVE 1" CLEAR ON THE PULL/STRIKE SIDE OF THE DOORS.

REFER TO FIXTURE INSTALLATION MANUAL FOR 'ADA' EXIT SIGNS AS NOTED ON DOOR & HARDWARE SCHEDULE.

HARDWARE TO BE FINISHED AS FOLLOWS:

- PROVIDE BURGULAR PROOF HINGES N.P.P. WHERE EXPOSED TO OUTSIDE OR COMMON AREAS.
- PROVIDE DOOR STOP ON ALL DOORS INCLUDING SAFE DOOR, WHERE THEY ARE LIABLE TO DAMAGE THE WALL OR ADJACENT FIXTURE.
- PULL ALL METAL DOORS. REFER TO INTERIOR ELEVATIONS SHEET.
- ALUMINUM ALLOY DOUBLE ACTION DOOR (ONE OR TWO DOORS) TO BE "EASY SWING" TYPE.
- ALL LOCKS AND LOCKING DEVICES ARE TO BE BEST CONSTRUCTION CORES.
- PROVIDE KAWNEER STYLE 2-PUSH PULL ON ALUMINUM AND GLASS DOORS. DO NOT INSTALL PULL ON DOORS NO. 3 (VEST. SIDE).
- DOOR HOLDERS TO BE INSTALLED ON THE KICK-PLATE SIDE OF DOOR, EXCEPT AT TOILET ROOMS.
- FOR EXTERIOR DOORS, PULL TO BE INSTALLED ON INSIDE OF DOOR, ABOVE DETEX.
- THRESHOLD FOR VESTIBULE ENTRANCE AND EXIT DOORS BY ZERO INTERNATIONAL #185A, ALUMINUM UTILITY SADDLE, 4"x12".
- THRESHOLDS FOR EXTERIOR HOLLOW METAL DOORS BY ZERO INTERNATIONAL #654A, ALUMINUM UTILITY SADDLE, 4"x12".

BEAUTY DEPARTMENT

RC2 1/8" = 1'-0"

POWER PLAN - LOUNGE

RC2 1/8" = 1'-0"

POWER PLAN - LEARNING

RC2 1/8" = 1'-0"

POWER PLAN - ASST MGR

RC2 1/8" = 1'-0"

REFLECTED CEILING PLAN - DRESSING RM

RC2 1/8" = 1'-0"

DOOR TYPES

RC2 1/8" = 1'-0"

DOOR TYPES

RC2 1/8" = 1'-0"

DOOR TYPES

RC2 1/8" = 1'-0"

DOOR TYPES

RC2 1/8" = 1'-0"

DOOR TYPES

RC2 1/8" = 1'-0"

DOOR TYPES

RC2 1/8" = 1'-0"

DOOR TYPES

RC2 1/8" = 1'-0"

DOOR TYPES

RC2 1/8" = 1'-0"

DOOR TYPES

RC2 1/8" = 1'-0"

DOOR TYPES

RC2 1/8" = 1'-0"

DOOR TYPES

RC2 1/8" = 1'-0"

DOOR TYPES

RC2 1/8" = 1'-0"

DOOR TYPES

RC2 1/8" = 1'-0"

DOOR TYPES

RC2 1/8" = 1'-0"

DOOR TYPES

RC2 1/8" = 1'-0"

DOOR TYPES

RC2 1/8" = 1'-0"

DOOR TYPES

RC2 1/8" = 1'-0"

DOOR TYPES

RC2 1/8" = 1'-0"

DOOR TYPES

RC2 1/8" = 1'-0"

DOOR TYPES

RC2 1/8" = 1'-0"

DOOR TYPES

RC2 1/8" = 1'-0"

DOOR TYPES

RC2 1/8" = 1'-0"

DOOR TYPES

RC2 1/8" = 1'-0"

DOOR TYPES

RC2 1/8" = 1'-0"

DOOR TYPES

RC2 1/8" = 1'-0"

DOOR TYPES

RC2 1/8" = 1'-0"

MARSHALLS ROOM MATERIAL & FINISH SCHEDULE

RC2 1/8" = 1'-0"

RC2 1/8" = 1'-0"

RC2 1/8" = 1'-0"

RC2 1/8" = 1'-0"

RC2 1/8" = 1'-0"

RC2 1/8" = 1'-0"

RC2 1/8" = 1'-0"

RC2 1/8" = 1'-0"

RC2 1/8" = 1'-0"

RC2 1/8" = 1'-0"

RC2 1/8" = 1'-0"

RC2 1/8" = 1'-0"

RC2 1/8" = 1'-0"

RC2 1/8" = 1'-0"

RC2 1/8" = 1'-0"

RC2 1/8" = 1'-0"

RC2 1/8" = 1'-0"

RC2 1/8" = 1'-0"

RC2 1/8" = 1'-0"

RC2 1/8" = 1'-0"

RC2 1/8" = 1'-0"

RC2 1/8" = 1'-0"

RC2 1/8" = 1'-0"

RC2 1/8" = 1'-0"

RC2 1/8" = 1'-0"

RC2 1/8" = 1'-0"

RC2 1/8" = 1'-0"

RC2 1/8" = 1'-0"

RC2 1/8" = 1'-0"

RC2 1/8" = 1'-0"

RC2 1/8" = 1'-0"

RC2 1/8" = 1'-0"

RC2 1/8" = 1'-0"

RC2 1/8" = 1'-0"

RC2 1/8" = 1'-0"

RC2 1/8" = 1'-0"

RC2 1/8" = 1'-0"

RC2 1/8" = 1'-0"

RC2 1/8" = 1'-0"

RC2 1/8" = 1'-0"

RC2 1/8" = 1'-0"

RC2 1/8" = 1'-0"

RC2 1/8" = 1'-0"

RC2 1/8" = 1'-0"

RC2 1/8" = 1'-0"

RC2 1/8" = 1'-0"

RC2 1/8" = 1'-0"

RC2 1/8" = 1'-0"

RC2 1/8" = 1'-0"

RC2 1/8" = 1'-0"

RC2 1/8" = 1'-0"

RC2 1/8" = 1'-0"

RC2 1/8" = 1'-0"

RC2 1/8" = 1'-0"

RC2 1/8" = 1'-0"

RC2 1/8" = 1'-0"

RC2 1/8" = 1'-0"

RC2 1/8" = 1'-0"

RC2 1/8" = 1'-0"

RC2 1/8" = 1'-0"

RC2 1/8" = 1'-0"

RC2 1/8" = 1'-0"

RC2 1/8" = 1'-0"

RC2 1/8" = 1'-0"

RC2 1/8" = 1'-0"

RC2 1/8" = 1'-0"

RC2 1/8" = 1'-0"

RC2 1/8" = 1'-0"

RC2 1/8" = 1'-0"

RC2 1/8" = 1'-0"

LEGEND

INDICATES NEW WALL

INDICATES NEW WALL EXTEND WALL CONSTRUCTION, INCLUDING PLYWOOD WHERE APPLICABLE TO UNDERSIDE OF DECK (BOTH SIDES). SEE CONSTRUCTION PLAN FOR WALL TYPE.

INDICATES: REMWORK OR NEW CONSTRUCTION

EXISTING DOOR OPENING. T.J. PROJECT MANAGER TO DETERMINE REPLACEMENT OF DOOR, FRAME, AND HARDWARE.

EXISTING DOOR AND FRAME (N.I.C.)

NEW DOOR OPENING, DOOR & FRAME SUPPLIED BY G.C.

LEGEND

EXISTING DOOR OPENING. T.J. PROJECT MANAGER TO DETERMINE REPLACEMENT OF DOOR, FRAME, AND HARDWARE.

EXISTING DOOR AND FRAME (N.I.C.)

NEW DOOR OPENING, DOOR & FRAME SUPPLIED BY G.C.

LEGEND

EXISTING DOOR OPENING. T.J. PROJECT MANAGER TO DETERMINE REPLACEMENT OF DOOR, FRAME, AND HARDWARE.

EXISTING DOOR AND FRAME (N.I.C.)

NEW DOOR OPENING, DOOR & FRAME SUPPLIED BY G.C.

LEGEND

EXISTING DOOR OPENING. T.J. PROJECT MANAGER TO DETERMINE REPLACEMENT OF DOOR, FRAME, AND HARDWARE.

EXISTING DOOR AND FRAME (N.I.C.)

NEW DOOR OPENING, DOOR & FRAME SUPPLIED BY G.C.

LEGEND

EXISTING DOOR OPENING. T.J. PROJECT MANAGER TO DETERMINE REPLACEMENT OF DOOR, FRAME, AND HARDWARE.

EXISTING DOOR AND FRAME (N.I.C.)

NEW DOOR OPENING, DOOR & FRAME SUPPLIED BY G.C.

LEGEND

EXISTING DOOR OPENING. T.J. PROJECT MANAGER TO DETERMINE REPLACEMENT OF DOOR, FRAME, AND HARDWARE.

EXISTING DOOR AND FRAME (N.I.C.)

NEW DOOR OPENING, DOOR & FRAME SUPPLIED BY G.C.

LEGEND

EXISTING DOOR OPENING. T.J. PROJECT MANAGER TO DETERMINE REPLACEMENT OF DOOR, FRAME, AND HARDWARE.

EXISTING DOOR AND FRAME (N.I.C.)

NEW DOOR OPENING, DOOR & FRAME SUPPLIED BY G.C.

LEGEND

EXISTING DOOR OPENING. T.J. PROJECT MANAGER TO DETERMINE REPLACEMENT OF DOOR, FRAME, AND HARDWARE.

EXISTING DOOR AND FRAME (N.I.C.)

NEW DOOR OPENING, DOOR & FRAME SUPPLIED BY G.C.

LEGEND

EXISTING DOOR OPENING. T.J. PROJECT MANAGER TO DETERMINE REPLACEMENT OF DOOR, FRAME, AND HARDWARE.

EXISTING DOOR AND FRAME (N.I.C.)

NEW DOOR OPENING, DOOR & FRAME SUPPLIED BY G.C.

LEGEND

EXISTING DOOR OPENING. T.J. PROJECT MANAGER TO DETERMINE REPLACEMENT OF DOOR, FRAME, AND HARDWARE.

EXISTING DOOR AND FRAME (N.I.C.)

NEW DOOR OPENING, DOOR & FRAME SUPPLIED BY G.C.

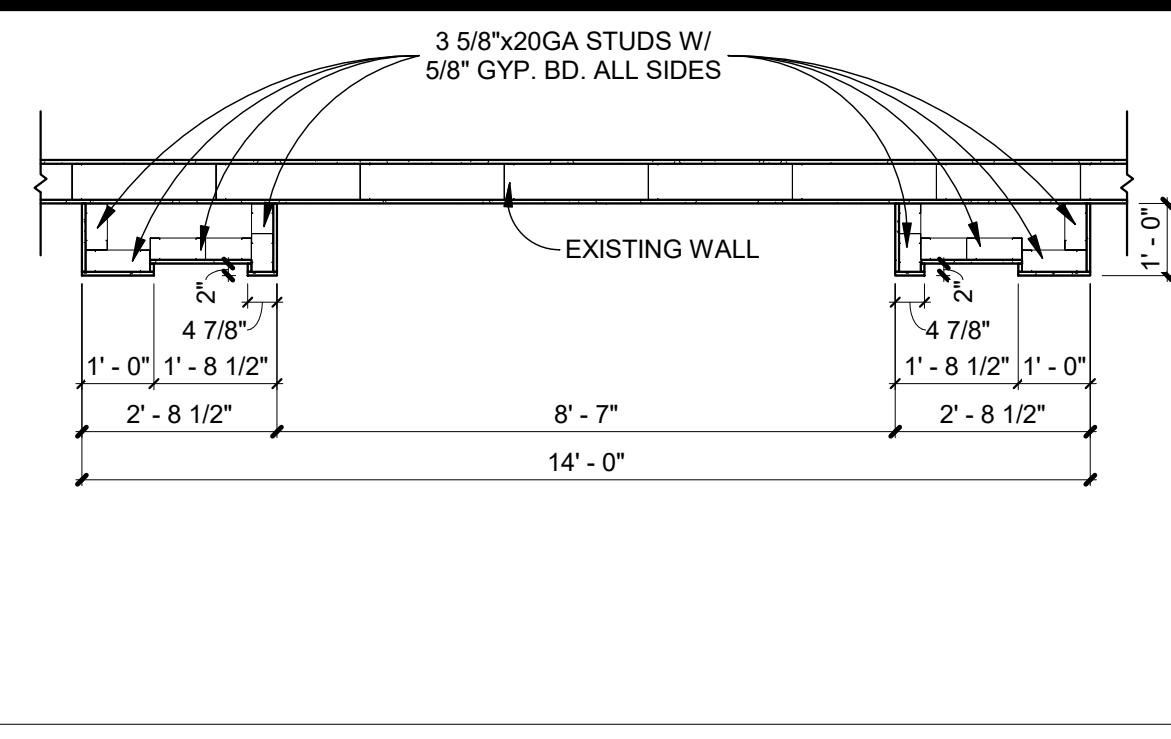
LEGEND

EXISTING DOOR OPENING. T.J. PROJECT MANAGER TO DETERMINE REPLACEMENT OF DOOR, FRAME, AND HARDWARE.

EXISTING DOOR AND FRAME (N.I.C.)

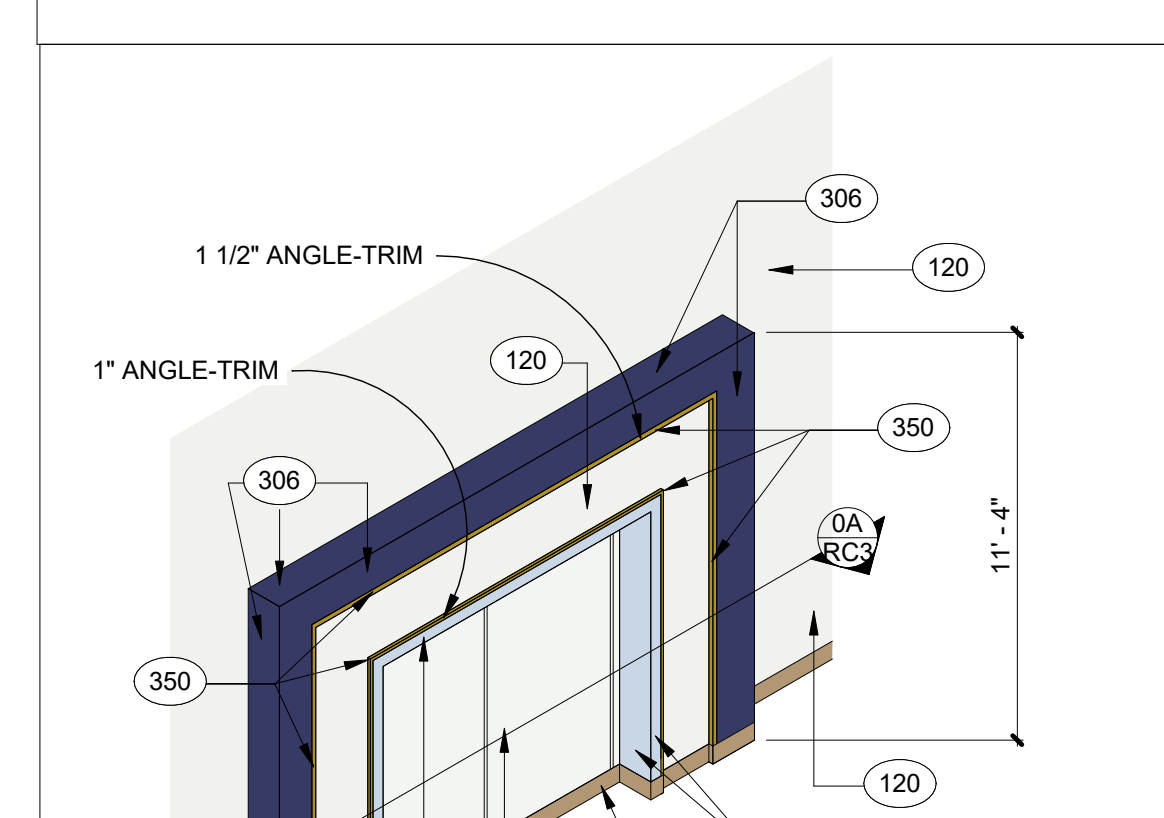
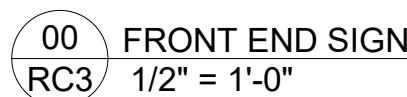
NEW DOOR OPENING, DOOR & FRAME SUPPLIED BY G.C.

LEGEND



Marshall's

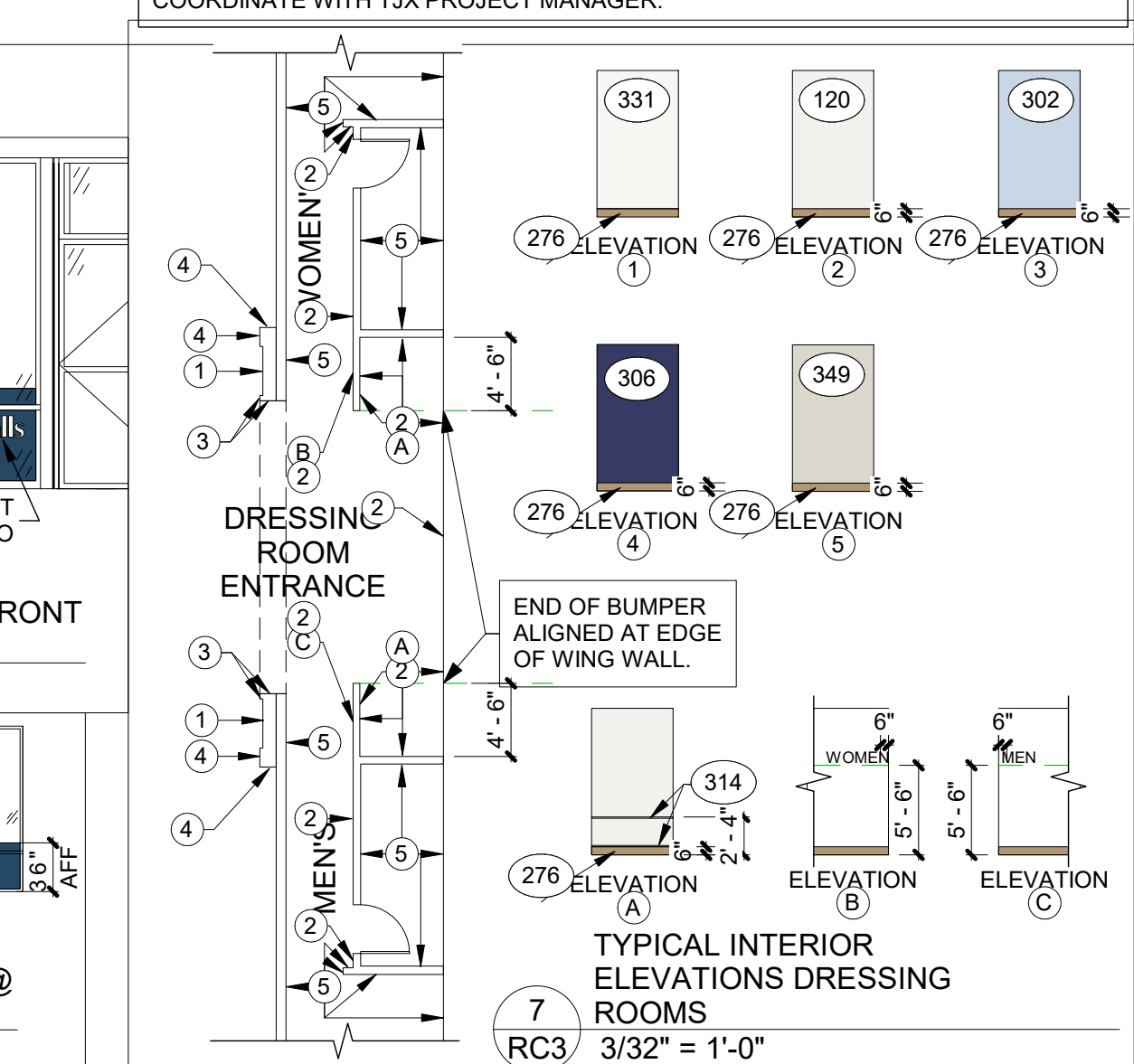
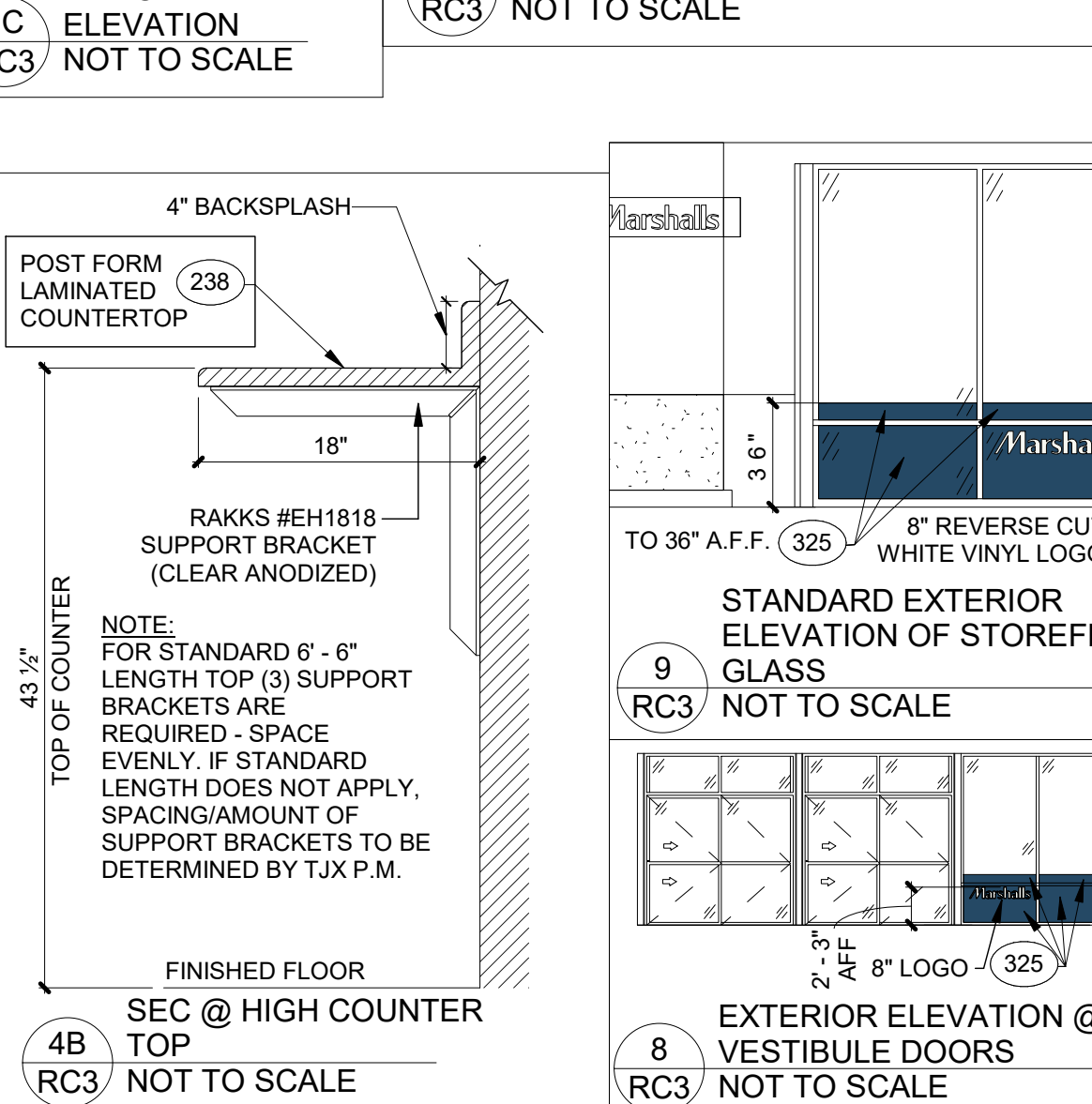
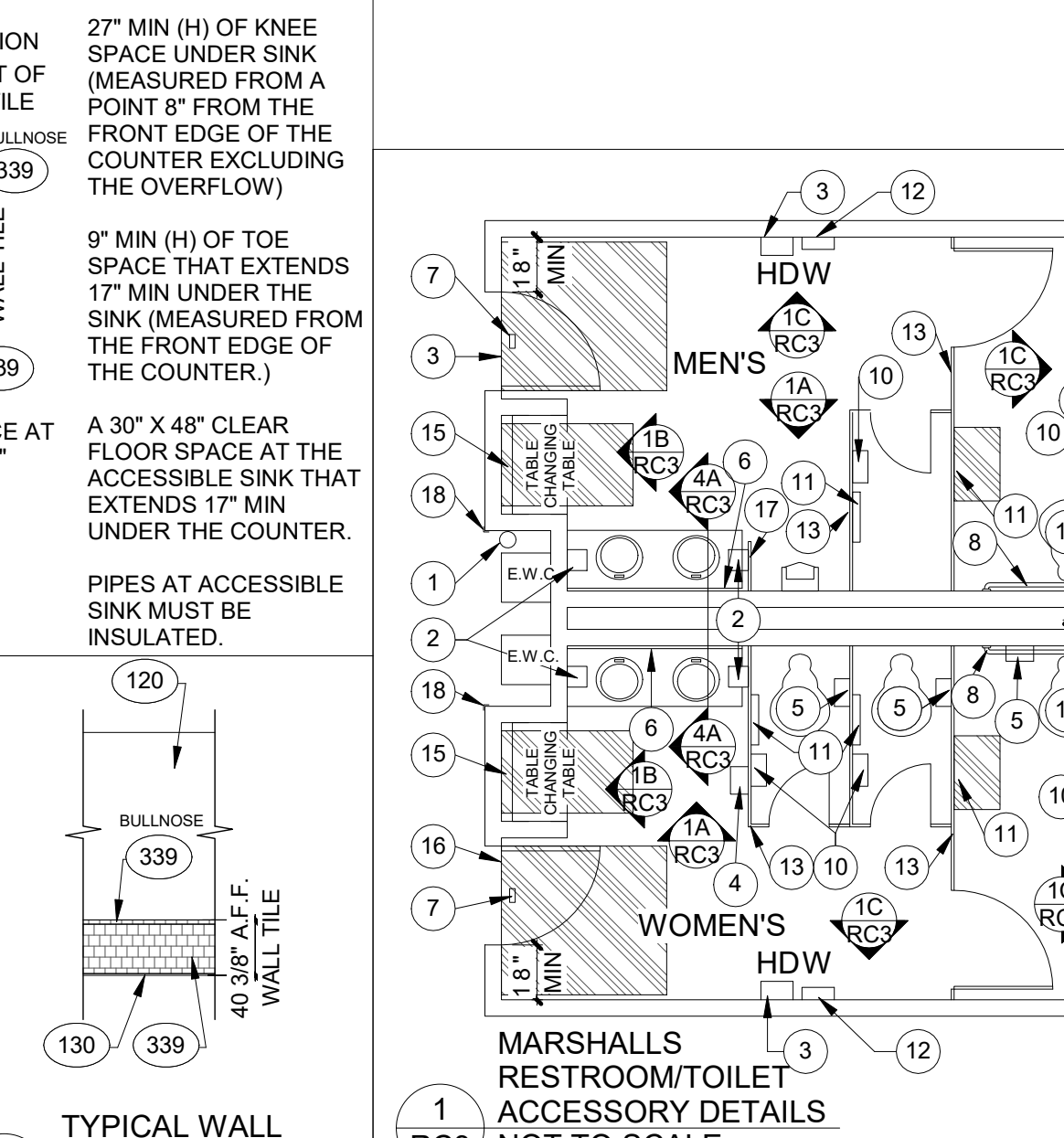
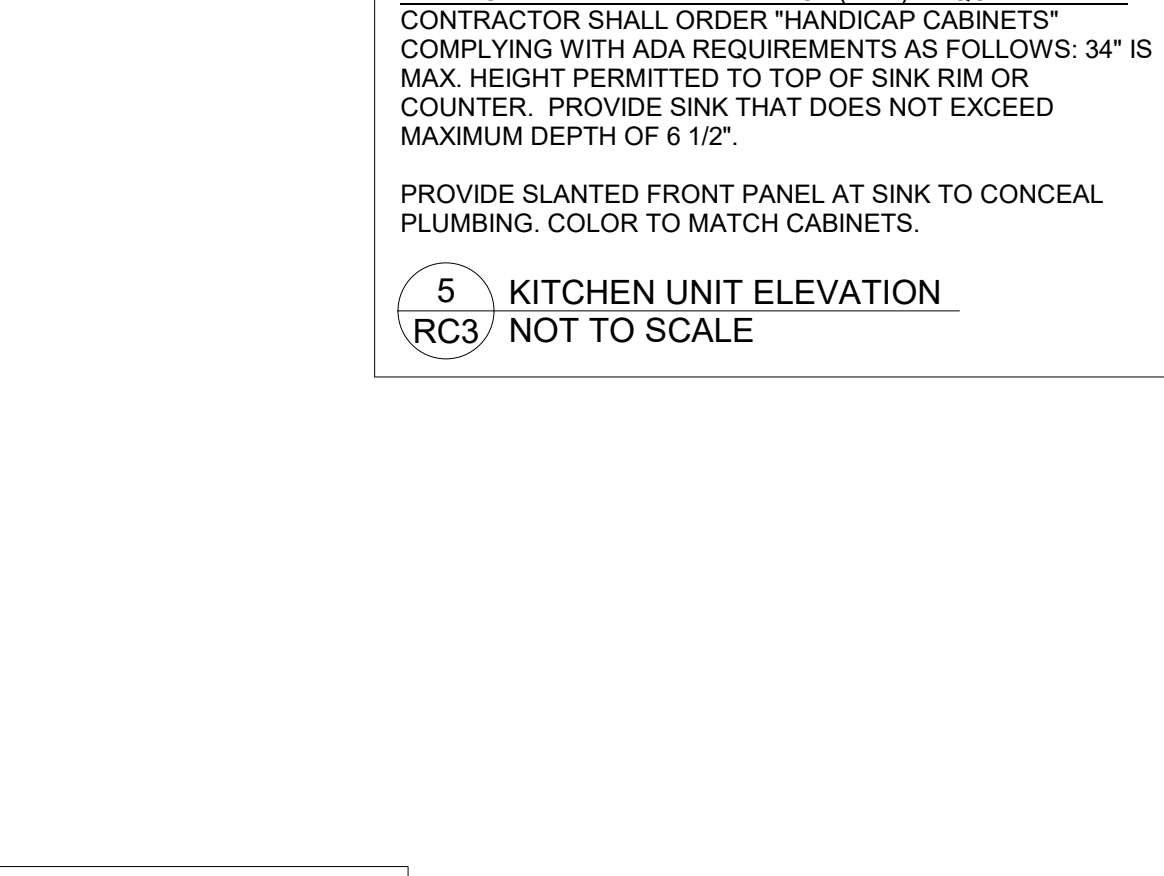
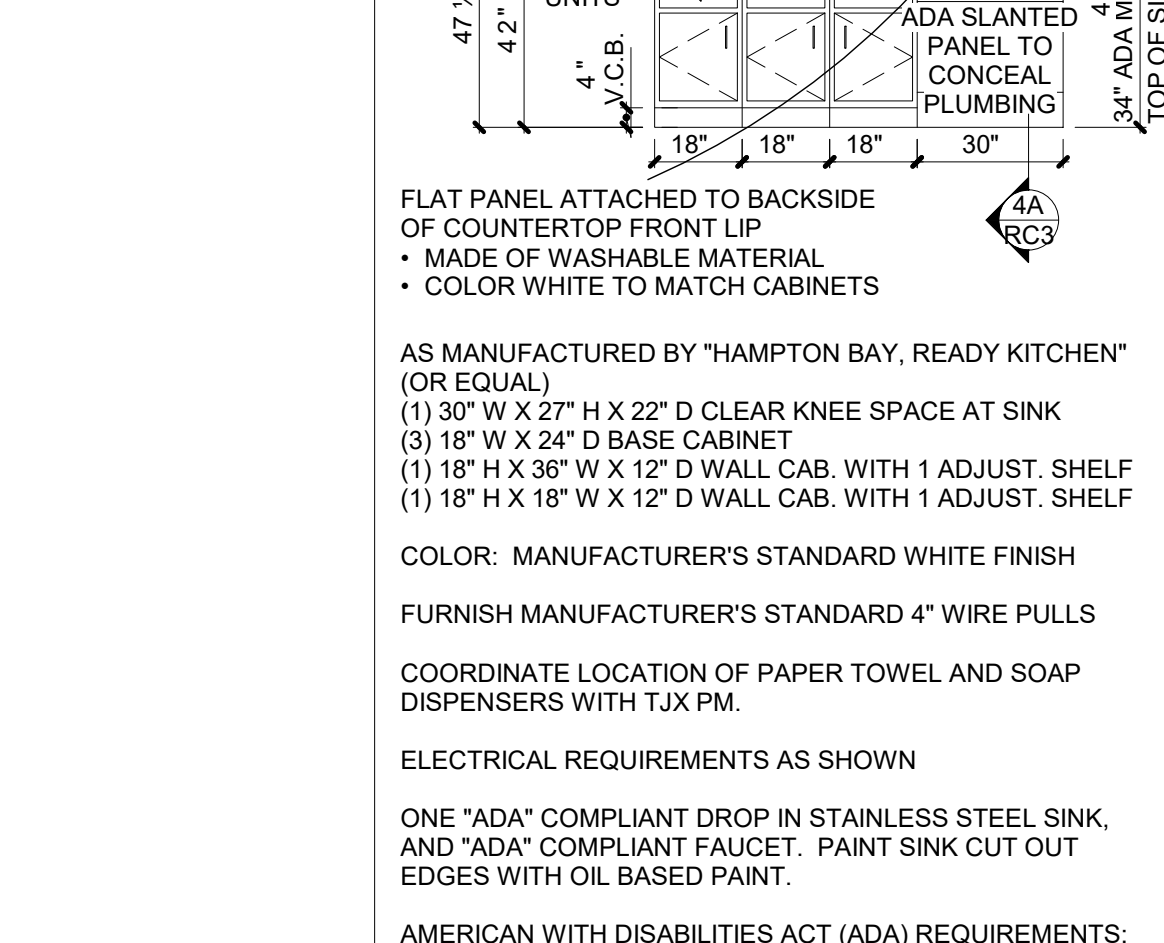
WOODMEN COMMONS, CO.



NOTE: NEW FOCAL WALL PANEL HORIZONTAL SLOTTING (8" O.C.) TO ALIGN WITH EXISTING WALL SYSTEM.

NOTE: G.C. TO PROVIDE NEW BLOCKING AS REQUIRED FOR NEW FOCAL WALL SYSTEM.

PANEL LEGEND



[illegible]

<h1 style="text-align: center;">INTERIOR ELEVATIONS</h1>	
Deal Type	REMODEL
Store Number	0192
Project Start Date	01/24/2023
Planned By	EL
Criteria Set By	EL
Checked By	DEM
<h1 style="font-size: 100px;">RC3</h1>	
Scale	As indicated