

RETAIL AND SERVICE PLUS PROTOTYPE

# **NA SPECIFICATIONS**

V 22.05.13

---

**01** OPENINGS: Doors | Windows

**02** FINISHES

**03** FURNITURE, FIXTURES + EQUIPMENT

**04** PLUMBING

**05** LIGHTING

**06** MISCELLANEOUS

00 | INDEX

01 | OPENINGS

02 | FINISH

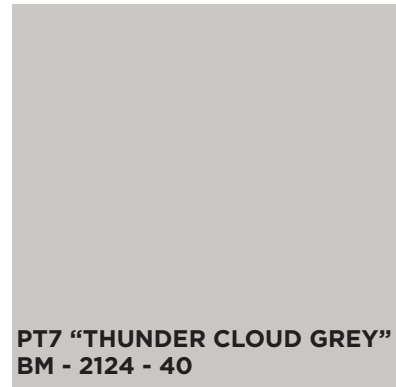
03 | FF & E

04 | PLUMBING

05 | LIGHTING

06 | MISC.

# FINISH



00 | INDEX

01 | OPENINGS

02 | FINISH

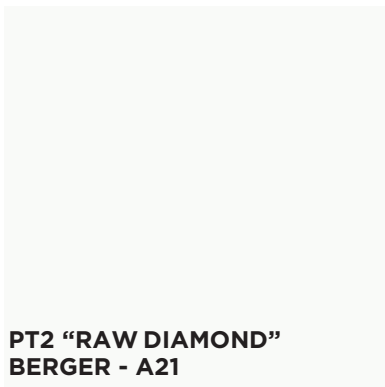
03 | FF & E

04 | PLUMBING

05 | LIGHTING

06 | MISC.





00 | INDEX

01 | OPENINGS

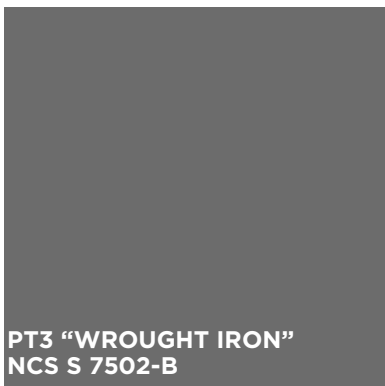
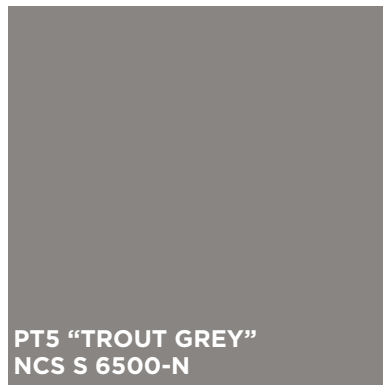
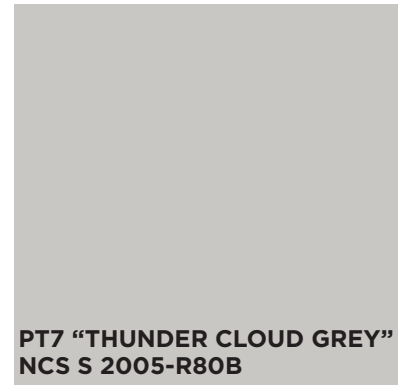
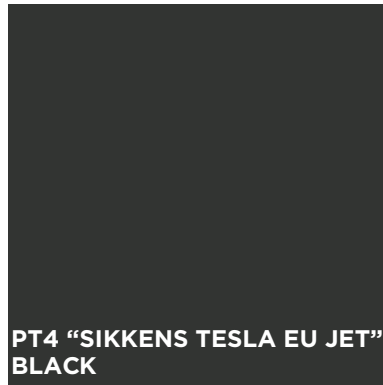
02 | FINISH

03 | FF & E

04 | PLUMBING

05 | LIGHTING

06 | MISC.



00 | INDEX

01 | OPENINGS

02 | FINISH

03 | FF & E

04 | PLUMBING

05 | LIGHTING

06 | MISC.

# PAINTS

BRAND GUIDELINES PANTONE | CMYK | RGB

C = 0 R = 204  
M = 100 G = 0  
Y = 81 B = 0  
K = 4

PMS 186 C - HEX #C00000

C = 3 R = 102  
M = 2 G = 102  
Y = 0 B = 107  
K = 68

COOL GRAY 11 C - HEX #66666b

C = 3 R = 232  
M = 2 G = 232  
Y = 0 B = 237  
K = 17

COOL GRAY 4 C - HEX #E8E8EC

C = 3 R = 30  
M = 2 G = 30  
Y = 0 B = 35  
K = 100

NEUTRAL BLACK C - HEX #1e1e22

C = 3 R = 167  
M = 2 G = 167  
Y = 0 B = 172  
K = 34

COOL GRAY 7 C - HEX #a7a7aC

00 | INDEX

01 | OPENINGS

02 | FINISH

03 | FF & E

04 | PLUMBING

05 | LIGHTING

06 | MISC.

# PAINTS

SHERWIN WILLIAMS - PRO-PARK WATERBORNE TRAFFIC MARKING PAINT

**PT15 "WHITE"**  
**B97WD2434**

**PT18 "RED"**  
**B97RD2012**

**PT16 "BLUE"**  
**B97LD2022**

**PT19 "YELLOW"**  
**B97YD2467**

**PT17 "BLACK"**  
**B97BD2021**

00 | INDEX

01 | OPENINGS

02 | FINISH

03 | FF & E

04 | PLUMBING

05 | LIGHTING

06 | MISC.

# FRONT OF HOUSE FURNITURE, FIXTURES + EQUIPMENT

**00** | INDEX

**01** | OPENINGS

**02** | FINISH

**03** | FF & E

**04** | PLUMBING

**05** | LIGHTING

**06** | MISC.

FF&E | FRONT OF HOUSE  
RETAIL DEVELOPMENT

TAG	DESCRIPTION	MANUFACTURER	PRODUCT ID	FINISH	SIZE	LOCATION
<a href="#">E131</a>	COFFEE MAKER SMALL   CUSTOMER	<a href="#">NESPRESSO</a>	Zenius	Black   Silver	7.5" W x 12.3" D x 15.7" H	Customer Lounge (Preferred)
<a href="#">E132</a>	COFFEE MAKER SMALL   CUSTOMER	<a href="#">KEURIG</a>	K155 - OfficePRO	Black   Silver	7.5" W x 12.3" D x 15.7" H	Customer Lounge (Optional)
<a href="#">E142</a>	WATER DISPENSER COUNTERTOP	<a href="#">WATERLOGIC</a>	WL2 Firewall	Black   Grey	13.7"W x 14.3D x 17.83H	Service Lounge   Coffee Bar
<a href="#">E244</a>	WALL CONNECTOR GEN3   24' CABLE	<a href="#">TESLA</a>	PN 1050067-00-E	Silver	6.3"W x 5.5"D x 15"H	Employee use   Service Area   PN
<a href="#">E246</a>	WALL CONNECTOR GEN3   24' CABLE   REFURBISHED/DISPLAY MODEL	<a href="#">TESLA</a>		Silver	6.3"W x 5.5"D x 15"H	Customer use   Dedicated Parking   PN
<a href="#">E274</a>	V3 SUPERCHARGER CABINET	<a href="#">TESLA</a>				FOH   BOH
<a href="#">E261</a>	SUPERCHARGER CHARGE POST	<a href="#">TESLA</a>				Dedicated Parking   Ask Retail Dev Design Mgr for specs   8' cable
<a href="#">E513</a>	3.5" EXTENDED BEZEL			Black		Customer Facing Area
<a href="#">E514</a>	50" TOUCHSCREEN	<a href="#">SAMSUNG   CHIEF</a>	QM50R	Black	45" x 26" x 3.5"	Customer Facing Area
<a href="#">E515</a>	55" SAMSUNG TV   WITH MAGICINFO REMOTE	<a href="#">SAMSUNG</a>	PH55F	Black	48.9"W x 28.3"H x 2.2"D	Office, Customer Lounge (As well as BOH Service Shop)
<a href="#">E518</a>	WALL MOUNT SUPPORTS 75LBS SCREENS	<a href="#">CHIEF</a>	TS325TU	Black		Wall Mounte Display Locations in Office, Customer Lounge and Service Shop
<a href="#">E550</a>	PRINTER   HP PAGEWIDE	<a href="#">HP</a>	PageWide Pro 477DN	White /Black	16.5"Wx17.8"D x 31.4"H	Retail and Service Office
<a href="#">F101</a>	Table, Service Lounge Square Coffee	<a href="#">AVE SIX</a>	WST17-WH	White   Chrome	28" x 28" x 17"	Service Lounge
<a href="#">F102</a>	Table   Side	<a href="#">AVE SIX</a>	WST09-WH Wall Street End Table	White   Chrome	22"W x 15.75"D x 18.5"H	Service Lounge
<a href="#">F115</a>	Round Table   4 people	<a href="#">PACIFIC COAST</a>	PLT36R/PLTRB- 23BRU	White	42"Dx29"H	Service Conference Room and Breakroom
<a href="#">F303</a>	Chair, Service Lounge Black Square Lounge	<a href="#">AVE SIX</a>	1213840	Black/Chrome	32" x 31" x 29-1/2"	Customer Lounge
<a href="#">F305</a>	Chair, Black Seat   Mesh Back Office	<a href="#">REALSPACE</a>	857562	Black	28-1/4"W x27-3/8"D x 37-3/4"-41- 1/4"H	Office   Conference Room
<a href="#">F317</a>	Counter Height Black Metal Stool	<a href="#">HERMAN MILLER</a>	Magis Deja-vu	Matte Black	26"H x 13"D	Customer Facing Area
<a href="#">F321</a>	25"H Counter stool, White	<a href="#">BLUDOT</a>		White	20"W x 19"D x 25"H	Configuration Area to be Used with M101 Configuration Table
<a href="#">F322</a>	30"H Barstool, White	<a href="#">BLUDOT</a>		White	20"W x 19"D x 30"H	At High Charging Tables to be Used with M120
<a href="#">F323</a>	Counter Height Leather White Stool	<a href="#">COLLINS</a>		White	16.5"W x 18"D x 25"H	Customer Facing Area
<a href="#">F324</a>	Bar Height Leather White Stool	<a href="#">COLLINS</a>		White	16.5"W x 18"W x 31"H	Customer Facing Area
<a href="#">F325</a>	Revolver Counter Height Stool	<a href="#">HAY</a>	100127995	Black	13.5"D x 25.5"H	Customer Facing Area
<a href="#">F800</a>	KEY DROP BOX Wall-mount	<a href="#">TUCKER INDUS- TRIES</a>	4efe9c51bb8c	Black Steel w/ White Lettering	15" x 12" x 25-1/4"	Service Entrance
<a href="#">F801</a>	KEY DROP BOX Post-mount	<a href="#">TUCKER INDUS- TRIES</a>	e48b50af0261	Black Steel	15" Wx 12"Dx 49 1/4"H	Service Entrance
<a href="#">F810</a>	Waste Bin, Exterior, Customer Facing	<a href="#">MAGNUSON GROUP</a>	UMEA-12.22	Brightbong Silver		Exterior Waste Bins - Customer Facing
<a href="#">F811</a>	Recycle Bin, Exterior, Customer Facing	<a href="#">MAGNUSON GROUP</a>	UMEA-12.32	Brightbong Silver		Exterior Waste Bins - Customer Facing
<a href="#">F820</a>	Ashtray	<a href="#">MAGNUSON GROUP</a>	FUM	White	9-5/8" x 9-5/8" x 39- 11/16"	Exterior Waste Bins - Customer Facing

FF&E | FRONT OF HOUSE  
RETAIL DEVELOPMENT

TAG	DESCRIPTION	MANUFACTURER	PRODUCT ID	FINISH	SIZE	LOCATION
<a href="#">F843</a>	Baby Changing Table Stainless Steel/Plastic Surface Mount Horizontal	<a href="#">KOALA CARE PRODUCTS</a>	KB200-SS	Stainless Steel	35-3/16"W x 4" to 23-3/16"D x 22-1/4"H	Customer Facing Restrooms
<a href="#">F845</a>	BABY CHANGING TABLE STAINLESS STEEL/PLASTIC SURFACE MOUNT VERTICAL	<a href="#">KOALA KARE PRODUCTS</a>	<a href="#">KB301-SS</a>	Stainless Steel	20-3/4" W x 4" to 36-5/8" x 35-7/8"H	Only to be Used when Horizontal Changing Table (F843) is impossible to be installed.
<a href="#">F850-855</a>	KIDS PACKAGE: SHELVEING, STORAGE WITH TOYS, 1 TABLE/4 CHAIRS, RED STORAGE OTTOMAN	<a href="#">IKEA</a>	Varries	Varries	30-3/8" x 15-3/8" x 30-3/8"	F.O.H. KIDS AREA PACKAGE
<a href="#">F880</a>	PODIUM   SERVICE DRIVE   BLACK	<a href="#">THE VALET SPOT</a>		Black	24"W x 19"D x 48"H	Service Advisor   Standard Design   Service Drive
<a href="#">G406</a>	GRAPHIC, WITH FRAME 4' X 6'	<a href="#">LEFRAME</a>			4'H x 6'W	Customer Facing Areas
<a href="#">G806</a>	GRAPHIC, WITH FRAME 8' X 6'	<a href="#">LEFRAME</a>			8'Hx 6'W	Customer Facing Areas
<a href="#">G809</a>	GRAPHIC, WITH FRAME 8' X 9'	<a href="#">LEFRAME</a>			8'H x 9'W	Customer Facing Areas
<a href="#">G812</a>	GRAPHIC, WITH FRAME 8' X 12'	<a href="#">LEFRAME</a>			8'H x 12'W	Customer Facing Areas
<a href="#">G815</a>	GRAPHIC, WITH FRAME 8' X 15'	<a href="#">LEFRAME</a>			8'Hx 15'W	Customer Facing Areas
<a href="#">G818</a>	GRAPHIC, WITH FRAME 8' X 18'	<a href="#">LEFRAME</a>			8'Hx 18'W	Customer Facing Areas
<a href="#">G821</a>	GRAPHIC, WITH FRAME 8' X 21'	<a href="#">LEFRAME</a>			8'Hx 21'W	Customer Facing Areas
<a href="#">G824</a>	GRAPHIC, WITH FRAME 8' X 24'	<a href="#">LEFRAME</a>			8'Hx 24'W	Customer Facing Areas
<a href="#">M101</a>	TABLE, 60" X 36" X 36", MEDIUM CONFIGURATION	<a href="#">SILVERSTAR</a>		White	60"Wx 36"Dx 36"H	FOH Configuration Area
<a href="#">M120</a>	HIGH CHARGING TABLE	<a href="#">SILVERSTAR</a>		White   Red	96"W x 24"D x 42"H	FOH
<a href="#">M150</a>	DESK, 72" RECEPTION DESK	<a href="#">SILVERSTAR</a>		White   Grey	72"W x 36"D x 30"H	FOH Service Reception
<a href="#">M510</a>	WOOD FRAME   FOR 49" TOUCHSCREEN	<a href="#">SILVERSTAR</a>			36.5"W x 22"H	Cavity Behind Graphics
<a href="#">M602</a>	6' COFFEE BAR	<a href="#">SILVERSTAR</a>			72" x 22" x 32"	FOH Service Lounge Area -
<a href="#">M610</a>	RECEPTION CABINET - (BEHIND RECEPTION DESK)	<a href="#">SILVERSTAR</a>			72" x 22" x 32"	FOH Service reception
<a href="#">M890</a>	TESLA WALL CONNECTOR PEDESTAL	<a href="#">TESLA</a>		Black	6"W x 2"D x 47"H	FOH   Parking

# BACK OF HOUSE FURNITURE, FIXTURES + EQUIPMENT

00 | INDEX

01 | OPENINGS

02 | FINISH

**03 | FF & E**

04 | PLUMBING

05 | LIGHTING

06 | MISC.



TAG	DESCRIPTION	MANUFACTURER	PRODUCT ID	FINISH	SIZE	LOCATION
<a href="#">E110</a>	REFRIGERATOR Full Size   Top Freezer   18 cu ft	<a href="#">FRIGIDAIRE</a>	FFHT1821TW	White	30"W x 30 1/8"D x 65 3/8"H	Service Breakroom
<a href="#">E120</a>	MICROWAVE 0.7 CUFT   700 WATTS	<a href="#">AVANTI</a>	MO7192TW	White	17.75"W x 12.75"D x 10.25"H	Retail Office + Service Breakroom
<a href="#">E132</a>	COFFEE MAKER FOH + BOH	<a href="#">KEURIG</a>	K155	Black   Silver	10.4"W x 14"D x 13.9"H	Coffee bar + Service Breakroom
<a href="#">E133</a>	COFFEE MAKER Employee Breakroom	<a href="#">MR. COFFEE</a>	667572	White	9"W x 6"D x 13"H	Service Breakroom
<a href="#">E141</a>	WATER DISPENSER TOWER Stand Alone	<a href="#">WATERLOGIC</a>	WL270	Black   Silver	15.5"W x 14.5"D x 45.75"H	Retail Office + Service Breakroom
<a href="#">E152</a>	COMERCIAL WASHER	<a href="#">WHIRLPOOL</a>	CHW9160GW	White	27"Wx28.81"D x37.75"H	SERVICE AREA
<a href="#">E153</a>	COMERCIAL DRYER - ELECTRIC	<a href="#">WHIRLPOOL</a>	UTGE5ASP115TW01	White	27"Wx29"D x37.75"H	SERVICE AREA
<a href="#">E154</a>	COMERCIAL DRYER - GAS (PREFERRED)	<a href="#">WHIRLPOOL</a>	CHW9160GW3.75	White	27"Wx29"D x37.75"H	SERVICE AREA
<a href="#">E244</a>	WALL CONNECTOR GEN3   24' CABLE	<a href="#">TESLA</a>	PN 1050067-01-E	Silver	6.3"W x 5.5"D x 15"H	Delivery, Service Area
<a href="#">E274</a>	V3 SUPERCHARGER CABINET	<a href="#">TESLA</a>				FOH   BOH
<a href="#">E261</a>	SUPERCHARGER CHARGE POST	<a href="#">TESLA</a>				Dedicated Parking   Ask Retail Dev Design Mgr for specs   8' cable
<a href="#">E293</a>	BIG ASS FAN   ESSENCE 8'	<a href="#">BIG ASS FAN</a>		Silver		Service Area
<a href="#">E294</a>	BIG ASS FAN   ESSENCE 10'	<a href="#">BIG ASS FAN</a>		Silver		Service Area
<a href="#">E295</a>	BIG ASS FAN   ESSENCE 12'	<a href="#">BIG ASS FAN</a>		Silver		Service Area
<a href="#">E296</a>	BIG ASS FAN   ESSENCE 14'	<a href="#">BIG ASS FAN</a>		Silver		Service Area
<a href="#">E515</a>	55" LCD SCREEN 36LBS	<a href="#">SAMSUNG</a>	PH55F	Black	49.2"W x 3.3"D x 28.7"H	Service Area (as well as Office and Customer Lounge FOH)
<a href="#">E517</a>	55" TV Ceiling Mount	<a href="#">CHEIF</a>	Varries	Black	Varries	Service Area - Ceiling Hung TV
<a href="#">E518</a>	Wall Mount Supports 75lbs screens	<a href="#">CHEIF</a>	TS325TU	Black		FOH + BOH   All Wall Mounted Screens
<a href="#">E519</a>	55" Mobile Cart Screen Mount	<a href="#">MOUNT FACTORY</a>	FBA_PRO- RC1500P	Black		Service Area
<a href="#">E520</a>	Screen Column Mount	<a href="#">CHEIF</a>	Varries	Black		Service Area Column Mounted Screen
<a href="#">E580</a>	IT Rack	<a href="#">NETSHELTER</a>	SX 24U - AR- 3104SPI	AR3100SP	23.62"W x 42.13"D x 47.24"H	IT ROOM   BOH   or Electrical Closet
<a href="#">E850</a>	Time Clock	<a href="#">KRONOS</a>	InTouch 9100			BOH   Adjacent to Service Breakroom
<a href="#">F115</a>	ROUND TABLE   4 PEOPLE	<a href="#">PACIFIC COAST</a>	PLT36R/PLTRB- 23BRU	White	42"Dx29"H	Service Conference Room and Breakroom
<a href="#">F200</a>	Desk Office	<a href="#">IKEA</a>	190.063.23	White	63" x 31-1/2" x 22-48"	Office
<a href="#">F210</a>	6' COUNTER	<a href="#">IKEA</a>	502.808.28	White	6'	Service Breakroom
<a href="#">F215</a>	BASE CABINET WITH DOORS	<a href="#">IKEA</a>	490.343.91	White	36"w x 24"d	Service Breakroom
<a href="#">F216</a>	DOOR HANDLES STAINLESS STEEL 2 PACK 5 7/16"	<a href="#">IKEA</a>	601.387.59	Stainless Steel	5 7/16"	Service Breakroom
<a href="#">F217</a>	LEGS 4 PACK 4.5"H WHITE	<a href="#">IKEA</a>	302.635.75	White	4 1/2 "H	Service Breakroom
<a href="#">F223</a>	CABINET 15"W X 30"H (SINGLE DRAWER & DOOR)	<a href="#">IKEA</a>	193.543.98	White	15"W x 30"H	Office
<a href="#">F224</a>	CABINET 15"W X 30"H (SINGLE DOOR)	<a href="#">IKEA</a>	693.788.58	White	15"W x 30"H	Office

FF&E | BACK OF HOUSE  
RETAIL DEVELOPMENT

TAG	DESCRIPTION	MANUFACTURER	PRODUCT ID	FINISH	SIZE	LOCATION
<a href="#">F225</a>	WALL CABINET NO DOORS	<a href="#">IKEA</a>	602.654.60	White	36"wx-14.75"dx-40"h	Service Breakroom
<a href="#">F226</a>	SHELVES 2 PACK	<a href="#">IKEA</a>	402.655.26	White	36"wx-14/75"d	Service Breakroom
<a href="#">F227</a>	SUSPENSION RAIL	<a href="#">IKEA</a>	602.615.27	White	84"	Service Breakroom
<a href="#">F305</a>	Chair, Black Seat   Mesh Back Office	<a href="#">REALSPACE</a>	857562	Black	28-1/4"W x 27-3/8"D x 37-3/4"-41-1/4"H	Office   Conference Room
<a href="#">F401</a>	CHAIR	<a href="#">TEKNION</a>	1455765	White	33"H X 27.5"D X 23"W	Service Breakroom
<a href="#">F700</a>	GALANT   2 SLIDING DOORS   WHITE	<a href="#">IKEA</a>	303.651.35 Galant	White	63"W x 17.75" D x 47.25"H	Office
<a href="#">F705</a>	CABINET   2 LATERAL DRAWERS   LOCKING	<a href="#">WORKPRO</a>	370217	Light Gray	42" W x 18 5/8" D x 28" H	Office - also Available in 42" W
<a href="#">F711</a>	CABINET, 2 DRAWER PEDESTAL, OFFICE	<a href="#">IKEA</a>	301.518.08 Erik	White	16 1/8"W x 19 5/8"D x 22 1/2"H	Office
<a href="#">F750</a>	CABINET   9 DRAWER   NON-LOCKING   FOR CALIFORNIA DMV PAPER-WORK	<a href="#">IKEA</a>	501.928.22 Alex	White	14 1/8x45 5/8 "	BOH
<a href="#">F900</a>	KEY CABINET SMALL	<a href="#">THE VALET SPOT</a>	24 Key Box	Black	18"W x 6"D x 21.5"H	Service Office
<a href="#">F901</a>	KEY CABINET LARGE	<a href="#">THE VALET SPOT</a>	50 Key Box	Black	21.5"W x 4"D x 27"H	Service Office
<a href="#">F920</a>	WHITE BOARD	<a href="#">STAPLES</a>	7554	White	4' x 3'	Office
<a href="#">F930</a>	COAT HOOK	<a href="#">THE CONTAINER STORE</a>	100007059	Stainless Steel	12-1/4" x 1-1/4" x 1-1/2"	Office
<a href="#">F940</a>	LOCKERS, 3 HIGH X 1 WIDE, BREAKROOM	<a href="#">HALLOWELL-MF</a>	C5E238234GY Paramount Locker	Gray	12"W x 15"D x 24"H (Overall 78"H)	Breakroom
<a href="#">F950</a>	LOCKERS, 2 HIGH X 1 WIDE, LOCKER ROOM	<a href="#">HALLOWELL-MF</a>	C5E652179GY Paramount Locker	Gray	12" W x 18" D x 36" H (Overall 78"H)	Locker Room
<a href="#">F960</a>	BENCH STANDARD, LOCKER ROOM	<a href="#">GLOBAL INDUSTRIAL</a>	WB183670	Maple	72"W x 9-1/2"D x 17"H	Locker Room
<a href="#">F961</a>	BENCH   ACCESSIBLE LOCKER ROOM	<a href="#">GLOBAL INDUSTRIAL</a>	WB269861	Maple	42"W x 24"D x 17-1/4"H	Locker Room
<a href="#">F990</a>	WASH BAY CURTAIN	<a href="#">AKON CURTAIN AND DIVIDER</a>		Gray   Clear	Varies	Wash Bay
<a href="#">F991</a>	DELIVERY BAY CURTAIN	<a href="#">PEAKS TARPS COMPANY</a>		Black	Varies	BOH   Delivery
<a href="#">F995</a>	RED 4'H COLUMN PADDING ROUND	<a href="#">AK ATHLETIC</a>		Red	4' Height - Various Dia.	Service Area at Columns
<a href="#">F996</a>	RED 4'H COLUMN PADDING SQUARE	<a href="#">AK ATHLETIC</a>		Red	4' Height - Various Sides.	Service Area at Columns

# FRONT OF HOUSE FURNITURE, FIXTURES + EQUIPMENT

**00** | INDEX

**01** | OPENINGS

**02** | FINISH

**03** | FF & E

**04** | PLUMBING

**05** | LIGHTING

**06** | MISC.

THIS PAGE IS INTENTIONALLY LEFT BLANK

00 | INDEX

01 | OPENINGS

02 | FINISH

03 | FF & E

04 | PLUMBING

05 | LIGHTING

06 | MISC.



00 | INDEX

01 | OPENINGS

02 | FINISH

03 | FF & E

04 | PLUMBING

05 | LIGHTING

06 | MISC.

**COFFEE MAKER | SMALL**  
**NESPRESSO | Zenius | Retail office | Service Lounge**

Estimated Lead time: 3 weeks

Nespresso Zenius | 10 or more users  
Brushed Stainless Steel | Black | 7.5"W x 12.3"D x 15.7"H | 68 oz reservoir

<https://www.nespresso.com/pro/us/en/pages/zenius-pro-coffee-machine#description>



**COFFEE MAKER | BLACK**  
**Keurig® K155 Small/Medium Office Brewer | FOH + BOH**

Estimated Lead Time: 3 Weeks

Keurig | K155 Office PRO | 15 Users  
 Brushed Stainless Steel | Black | 10.4"W x 14"D x 13.9"H | 90 oz reservoir

<https://www.keurig.com/>

00 | INDEX

01 | OPENINGS

02 | FINISH

03 | FF & E

04 | PLUMBING

05 | LIGHTING

06 | MISC.



00 | INDEX

01 | OPENINGS

02 | FINISH

03 | FF &amp; E

04 | PLUMBING

05 | LIGHTING

06 | MISC.

### WATER DISPENSER | SURFACE MOUNTED Coffee Bar | Customer Lounge

Estimated Lead Time: 4 Weeks

Waterlogic | WL2 FW | BLACK | 13.7"W x 14.3D x 17.83H  
120V/60Hz, 10.0Amps  
Lead Time Estimate: 4 weeks

<https://www.waterlogic.com/en-us/office-water-dispensers/products/wl2-firewall/>



00 | INDEX

01 | OPENINGS

02 | FINISH

03 | FF &amp; E

04 | PLUMBING

05 | LIGHTING

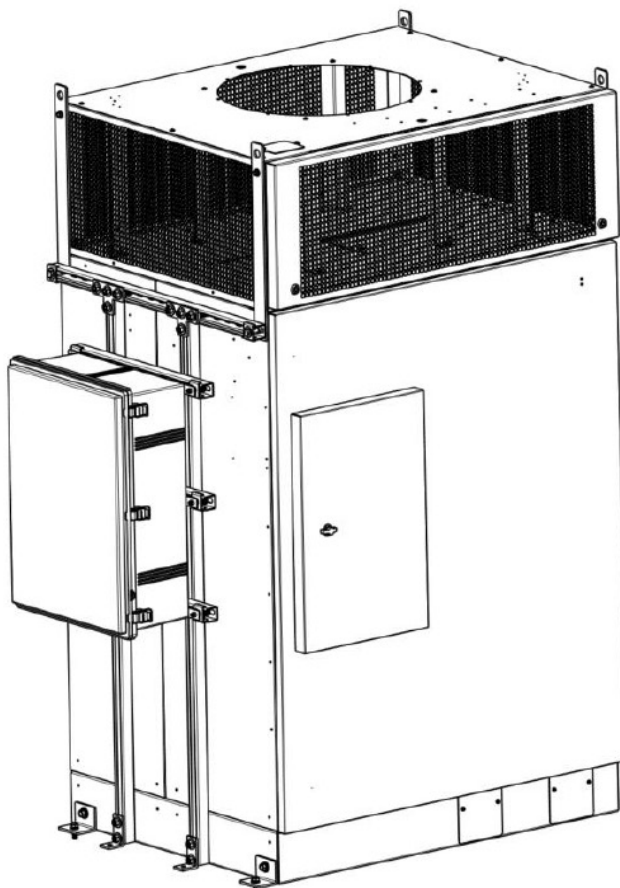
06 | MISC.

**WALL CONNECTOR GEN 3 WITH 24' CABLE | FOH & BOH**  
**For Employee & Customer Use**

TESLA Proprietary design  
24' Cable | Customer & Employee Use | PN 1050067-00-E  
Silver and Black | 6.3"W x 5.5"D x 15"H | 208V or 240V AC single-phase

<https://shop.tesla.com/product/silver-wall-connector>





00 | INDEX

01 | OPENINGS

02 | FINISH

03 | FF & E

04 | PLUMBING

05 | LIGHTING

06 | MISC.

## V3 SUPERCHARGER CABINENT | FOH & BOH

TESLA Proprietary design



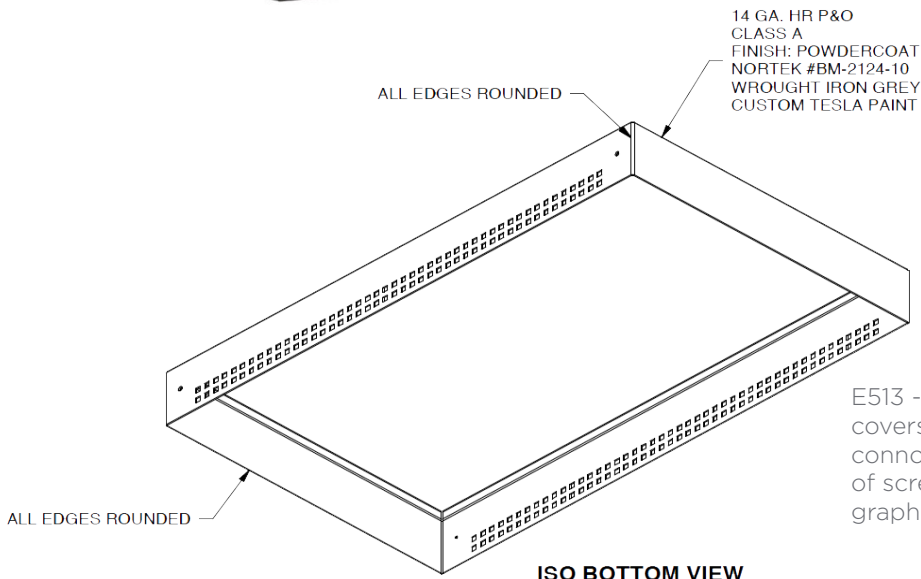
**SUPERCHARGER CHARGE POST | FOH & BOH**

TESLA Proprietary design  
To be used along with E274 V3 Supercharger Cabinet

- 00 | INDEX
- 01 | OPENINGS
- 02 | FINISH
- 03 | FF & E
- 04 | PLUMBING
- 05 | LIGHTING
- 06 | MISC.

# E514 | E513

50" TOUCHSCREEN WITH E513 3.5" DEEP BEZEL



E513 - 3.5" EXTENDED BEZEL covers the gap left when the arm cannot fully retract for the back of screen to be flush with face of graphic fabric.

## 50" TOUCHSCREEN | SAMSUNG | QM50R Showroom Graphics Touchscreen LCD Display | FOH

Samsung QM50R | 45.498"W x 26.773"H x 3.5D | 29.5 lbs

<https://www.samsung.com/us/business/support/owners/product/qmr-series-digital-signage-qm50r/>

\*NOTE: To be used with M510 Wood Frame (4 week Lead Time) and E518 MOUNT

E513 - 3.5" bezel, factory installed

00 | INDEX

01 | OPENINGS

02 | FINISH

03 | FF & E

04 | PLUMBING

05 | LIGHTING

06 | MISC.

# E515

55" SCREEN, WITH E518 MOUNT



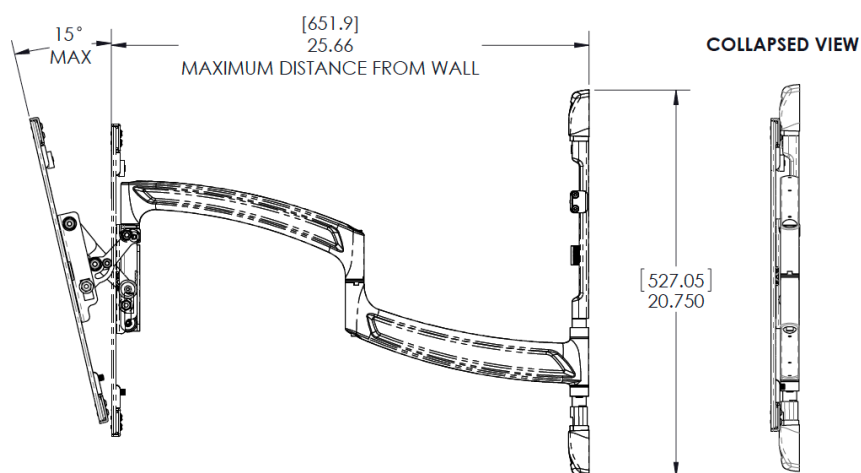
E518 - Chief TS325TU | 75 capacity

## 55" TOUCHSCREEN | SAMSUNG | PH55F Service Lounge and Service Area LCD Display With Magicinfo | FOH + BOH

Samsung PH55F | 49.2"W x 3.3"D x 28.7"H | 36.1 lbs  
<https://www.samsung.com/us/business/support/owners/product/ph-f-series-digital-signage-ph55f/>

Samsung MagicInfo Remote Management Software Client License BM-MIV20SS

NOTE: To be used with E518 wall Mount  
Mount 25" extension | Chief TS325TU | 75 capacity  
[https://www.legrandav.com/en/products/chief/mounts/display/wall-full\\_swing/ts325t/ts325tu](https://www.legrandav.com/en/products/chief/mounts/display/wall-full_swing/ts325t/ts325tu)



#### MEDIUM THINSTALL DUAL SWING ARM WALL DISPLAY MOUNT FOH + BOH

Chief TS325TU | 75 capacity | TV Wall Mount | Black

To be Used for E510, E515, (Wall Mounted Displays)

[https://www.legrandav.com/en/products/chief/mounts/display/wall-full\\_swing/ts325t/ts325tu](https://www.legrandav.com/en/products/chief/mounts/display/wall-full_swing/ts325t/ts325tu)



00 | INDEX

01 | OPENINGS

02 | FINISH

03 | FF & E

04 | PLUMBING

05 | LIGHTING

06 | MISC.

## PRINTER Office and Conference room

Estimated Lead Time: 2 weeks | Supplied By Office Depot

HP PageWide Pro 477dn | White / Black All-in-One Color Business Printer With 2-Sided Duplex Printing, D3Q19A

31.6"W x 27.3"D x 18.4"H | 55 lbs

<https://www.officedepot.com/>



**TABLE | SQUARE COFFEE TABLE**  
**Service Lounge**

Work Smart Avenue Six | | WST17-WH Wall Street Square Coffee Table  
White High Gloss with Chrome legs | 28"W x 28"D x 17"H

Lead time: 2 weeks | Supplied by Office Depot

<https://www.officedepot.com/a/products/1839394/Ave-Six-Wall-Street-Table-AccentCorner/>



00 | INDEX

01 | OPENINGS

02 | FINISH

03 | FF & E

04 | PLUMBING

05 | LIGHTING

06 | MISC.

## TABLE | RECTANGLE SIDE Service Lounge

Work Smart Avenue Six | WST09-WH Wall Street End Table  
White High Gloss with Chrome legs | 22"W x 15.75"D x 18.5"H

Estimated Lead time: 2 weeks | Supplied by Office Depot

<https://www.officedepot.com/a/products/473796/Ave-Six-Wall-Street-Table-End/>





00 | INDEX

01 | OPENINGS

02 | FINISH

03 | FF & E

04 | PLUMBING

05 | LIGHTING

06 | MISC.

**TABLE | FOUR PERSON**  
**Service Conference Room and Service Breakroom | FOH + BOH**

Kahl | Round Multipurpose Table | White | Steel Brushed Disc Base | 42"Dx29"H

<http://www.pcfistributors.com/products/tables/roundmultipurposetables>



00 | INDEX

01 | OPENINGS

02 | FINISH

03 | FF & E

04 | PLUMBING

05 | LIGHTING

06 | MISC.

**CHAIR | SQUARE | BLACK**  
**Service Lounge**

Estimated Lead time: 2 weeks | Supplied by Office Depot

Ave Six Pacific Avenue Vinyl Arm Chair, Black/Chrome | Item # 1213840 | Manufacturer # PAC51-V18  
Black vinyl with chrome legs | 32" W x 31" D x 29 1/2" H | 58LBS

<https://www.officedepot.com/a/products/1213840/Ave-Six-Pacific-Avenue-Vinyl-Arm/>



00 | INDEX

01 | OPENINGS

02 | FINISH

03 | FF & E

04 | PLUMBING

05 | LIGHTING

06 | MISC.

**CHAIR | BLACK MESH**  
**Office | Conference Room | FOH + BOH**

Estimated Lead time: 2 weeks | Supplied by Office Depot

Realspace® Calusa Mesh Managerial Mid-Back Chair, itme #857562 | MFG# H-8881FB  
 Black | 28-1/4"W x 27-3/8"D x 37-3/4" - 41-1/4"H

<https://www.officedepot.com/a/products/857562/Realspace-Calusa-Mesh-Managerial-Mid-Back/>



00 | INDEX

01 | OPENINGS

02 | FINISH

03 | FF & E

04 | PLUMBING

05 | LIGHTING

06 | MISC.

## GENERIC COUNTER HEIGHT BLACK METAL STOOL | 26" H

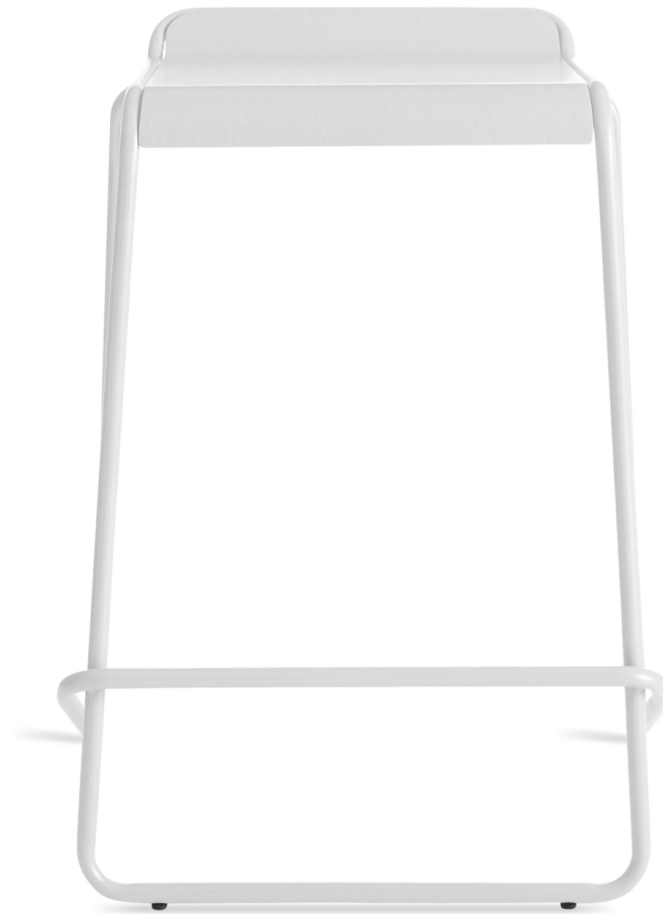
Black | Magis Dejavu | Matte Black  
26"H x 13"D Metal Stool

<https://www.hermanmiller.com/products/seating/stools/magis-deja-vu-stool/product-images/magis-deja-vu-stool/f7a8021d-a602-4961-8440-86fd0ee06802/>

TESLA

FF & E - F.O.H.

TESLA NA SPECIFICATIONS 31



00 | INDEX

01 | OPENINGS

02 | FINISH

03 | FF & E

04 | PLUMBING

05 | LIGHTING

06 | MISC.

**READY STACKING COUNTER STOOL | 25" H**  
**To be Used ONLY WITH M101 CONFIGURATION TABLE**

Blue Dot | Ready Stacking Counter Stool |  
White | 20"W x 19"D x 25"-27"H

Estimated Lead time: 4 weeks | Supplied by Blu Dot

<https://www.bludot.com/ready-stacking-counter-stool.html>



00 | INDEX

01 | OPENINGS

02 | FINISH

03 | FF & E

04 | PLUMBING

05 | LIGHTING

06 | MISC.

**READY STACKING BARSTOOL | 30" H**  
**To be Used With ONLY WITH M120 BAR HEIGHT CHARGING TABLE**

Blue Dot | Ready Stacking BarStool |  
White | 20"W x 19"D x 30"-32"H

Estimated Lead time: 4 weeks | Supplied by Blu Dot

<https://www.bludot.com/ready-stacking-barstool.html>

# F323

COUNTER LEATHER STOOL | WHITE | 25"H



00 | INDEX

01 | OPENINGS

02 | FINISH

03 | FF & E

04 | PLUMBING

05 | LIGHTING

06 | MISC.

## GENERIC COUNTER HEIGHT WHITE VEGAN LEATHER STOOL | 25" H

Collins | Pistel white | Stainless steel frame  
16.5"W x 18"D x 25"H

<https://www.roomandboard.com/catalog/dining-and-kitchen/counter-and-bar-stools/collins-counter-and-bar-stools-with-leather-seat>

TESLA

FF & E - F.O.H.

TESLA NA SPECIFICATIONS 34

# F324

LEATHER BARSTOOL | WHITE | 31"H



00 | INDEX

01 | OPENINGS

02 | FINISH

03 | FF & E

04 | PLUMBING

05 | LIGHTING

06 | MISC.

## GENERIC BAR HEIGHT WHITE VEGAN LEATHER STOOL | 31" H

Collins | Pistel white | Stainless steel frame  
16.5"W x 18"W x 31"H

<https://www.roomandboard.com/catalog/dining-and-kitchen/counter-and-bar-stools/collins-counter-and-bar-stools-with-leather-seat>

TESLA

FF & E - F.O.H.

TESLA NA SPECIFICATIONS 35



# F325

REVOLVER STOOL | BLACK | 25.5"H



00 | INDEX

01 | OPENINGS

02 | FINISH

03 | FF & E

04 | PLUMBING

05 | LIGHTING

06 | MISC.

## REVOLVER COUNTER HEIGHT BLACK STOOL | 25.5" H

HAY | Black metal | Powder-coated steel | Aluminum bearing  
13.5"D x 25.5"H

#100127995

<https://us.hay.com/furniture/seating/stools/revolver-stool/2514631.html?lang=en-US>

TESLA



## KEY DROP BOX | WALL MOUNT Outside Service Drop Off Area

Tucker Industries  
Self-Contained Night Drop Box | Black Steel with White Lettering  
15"Wx12"Dx25 1/4"H

Estimated Lead time: 2 weeks | Supplied by Valet Spot

<https://tuckerindustriesinc.com/product/self-contained-night-drop-box-qty-1/>

## *Pedestal Mount*



### **KEY DROP BOX AND POST | PEDESTAL MOUNT** **Outside Service Drop Off Area**

Tucker Industries  
Self Contained Night Drop Box | Surface Mount Post for Drop Box  
Black Steel | 15"Wx12"Dx49 1/4"H

Estimated Lead time: 2 weeks | Supplied by Valet Spot

<https://tuckerindustriesinc.com/product/self-contained-night-drop-box-qty-1/>  
<https://tuckerindustriesinc.com/product/surface-mount-post-for-drop-box-24-long-qty-1/>

**TESLA**

FF & E - F.O.H.

TESLA NA SPECIFICATIONS 38

00 | INDEX

01 | OPENINGS

02 | FINISH

03 | FF & E

04 | PLUMBING

05 | LIGHTING

06 | MISC.

# F810 + F811

WASTE BIN + RECYCLE BIN | 40G | EXTERIOR | CUSTOMER FACING



## WASTE BIN + RECYCLE BIN 40GAL Exterior | Customer Facing

Magnuson Group

UMEA-12 Single 40 gallon waste or recycling receptacle with angled hood

UMEA-22 Double 40 gallon waste and recycling receptacles with angled hood

<http://files.magnusongroup.com/sitedocs/pdf/magnusonumea-10611.pdf>

TESLA

FF & E - F.O.H.

TESLA NA SPECIFICATIONS 39

00 | INDEX

01 | OPENINGS

02 | FINISH

03 | FF & E

04 | PLUMBING

05 | LIGHTING

06 | MISC.



00 | INDEX

01 | OPENINGS

02 | FINISH

03 | FF & E

04 | PLUMBING

05 | LIGHTING

06 | MISC.

## ASHTRAY

Use only if approved by Regional Operations Manager and Design Manager

Magnuson Group | FUM Ashtray | White  
9-5/8"W x 9-5/8"D x 39-11/16"H

<http://files.magnusongroup.com/sitedocs/pdf/fumsellsheet-10389.pdf>



00 | INDEX

01 | OPENINGS

02 | FINISH

03 | FF &amp; E

04 | PLUMBING

05 | LIGHTING

06 | MISC.

### Baby Changing Table Stainless Steel/Plastic Surface Mount Horizontal KB200-SS (PREFERRED)

Koala Care Products | KB200-SS | Horizontal Wall Mounted Baby Changing Station  
 Stainless Steel | White Granite  
 35-3/16"W x 4" to 23-3/16"D x 22-1/4"H

Estimated Lead Time: 2 weeks

<http://www.koalabear.com/baby-changing-stations/kb200-ss>



00 | INDEX

01 | OPENINGS

02 | FINISH

03 | FF &amp; E

04 | PLUMBING

05 | LIGHTING

06 | MISC.

**Baby Changing Table Stainless Steel/Plastic Surface Mount Vertical**  
**Only to be Used when Horizontal Changing Table (F843) is impossible to be installed.**

Koala Kare Products | KB301-SS | Vertical Wall Mounted Baby Changing Station  
 Stainless Steel | White Granite  
 20-3/4" W x 4" to 36-5/8" x 35-7/8"H

Estimated Lead Time: 2 weeks

<https://www.koalabear.com/product-catalog/kb301-ss/>

# F850-F855

KIDS AREA PACKAGE

F853



F854

F851



F855



F850



F852

## KIDS AREA PACKAGE

**Shelving with four bins, table with four chairs, two red ottomans + toys**

Estimated Lead Time For F850, F851, and F852: 2 weeks | Supplied by IKEA

Estimated Lead Time For 853-854: 6-10 weeks |

**F850:** IKEA 503.057.39 Kallax Shelf Unit | White 30.5"W x 15.5"D x 30.5"H

<https://www.ikea.com/us/en/catalog/products/60275812/#/50305739>

**F851:** IKEA Toys: Order what is readily available at the local IKEA

<https://www.ikea.com/us/en/catalog/products/60320094/>

<https://www.ikea.com/us/en/catalog/products/40171472/>

**F852:** IKEA 103.003.19 Drona Box | Black 13"W x 15"D x 13"H

<https://www.ikea.com/us/en/catalog/products/10300319/>

**F853:** Kids Table (Table & 4 Chairs ordered together) | 19" H X 23.5" W X 23.5" D

<https://www.vertigo-interiors.com/en-us/product/kids-square-white-table-4-kids-dsr-chairs-inspired-by-designs-of-eames>

**F854:** Kids Chair | 22" H X 12" W X 13.5" D | Seat Height 13"

<https://www.vertigo-interiors.com/en-us/product/kids-dsr-eiffel-side-chair-inspired-by-designs-of-charles-ray-eames?variant=740>

**F855:** Ottoman | 15" H x 15" W x 15" D

<https://www.wayfair.com/furniture/pdp/orren-ellis-cresskill-storage-ottoman-orne8416.html?piid=25141164>





00 | INDEX

01 | OPENINGS

02 | FINISH

03 | FF & E

04 | PLUMBING

05 | LIGHTING

06 | MISC.

## PODIUM

Service Customer drop off | FOH + BOH

Estimated Lead Time : 3 weeks | Supplied by Valet Spot

The Valet Spot Standard Valet Podium  
Black | 24"W x 19"D x 48"H

<https://www.thevaletspot.com/standard-valet-podium/>

# G406 | G806 | G809 | G812

NON ILLUMINATED GRAPHIC + FRAME

00 | INDEX

01 | OPENINGS

02 | FINISH

03 | FF & E

04 | PLUMBING

05 | LIGHTING

06 | MISC.



## Non Illuminated Graphic with 2" Deep Metal Frame

Tesla Dedicated Vendor

G406 4'x6' Conference Room

G806 8'x6'

G809 8'x9'

G812 8'x12'

G815 8'x15'

G818 8'x18'

G821 8'x21'

G824 8'x24'

\* Must receive Retail Dev Lead Approval to use the following sizes: G815, G818, G821, G824.

**TESLA**

FF & E - F.O.H.

TESLA NA SPECIFICATIONS 45



00 | INDEX

01 | OPENINGS

02 | FINISH

03 | FF &amp; E

04 | PLUMBING

05 | LIGHTING

06 | MISC.

**TABLE | CONFIGURATION | COUNTER HEIGHT**  
**Showroom | Only F321 Chairs To Be Used**

Estimated Lead Time: 4 Weeks

Tesla Millwork Vendor

Panolam Nevamar Chalk White S7024 and Liberty Red S1027

Finish: ARP (T-) Low Gloss, textured finish with 8.5 Nominal Gloss Units

Standard High Pressure Laminate typical | Thru color HPL for exposed edges

60"W x 36"D x 36"H



**TABLE | BAR HEIGHT | WITH CHARGING**  
**Service Lounge | Only to be used With F322 Barstools**

Estimated Lead Time: 4 Weeks

TO REPLACE M121 BAR HEIGHT TABLE WITH NO CHARGING

Tesla Millwork Vendor

Panolam Nevamar Chalk White S7024 and Liberty Red S1027

Finish: ARP (T-) Low Gloss, textured finish with 8.5 Nominal Gloss Units

Standard High Pressure Laminate typical | Thru color HPL for exposed edges

96"W x 24"D x 42"H



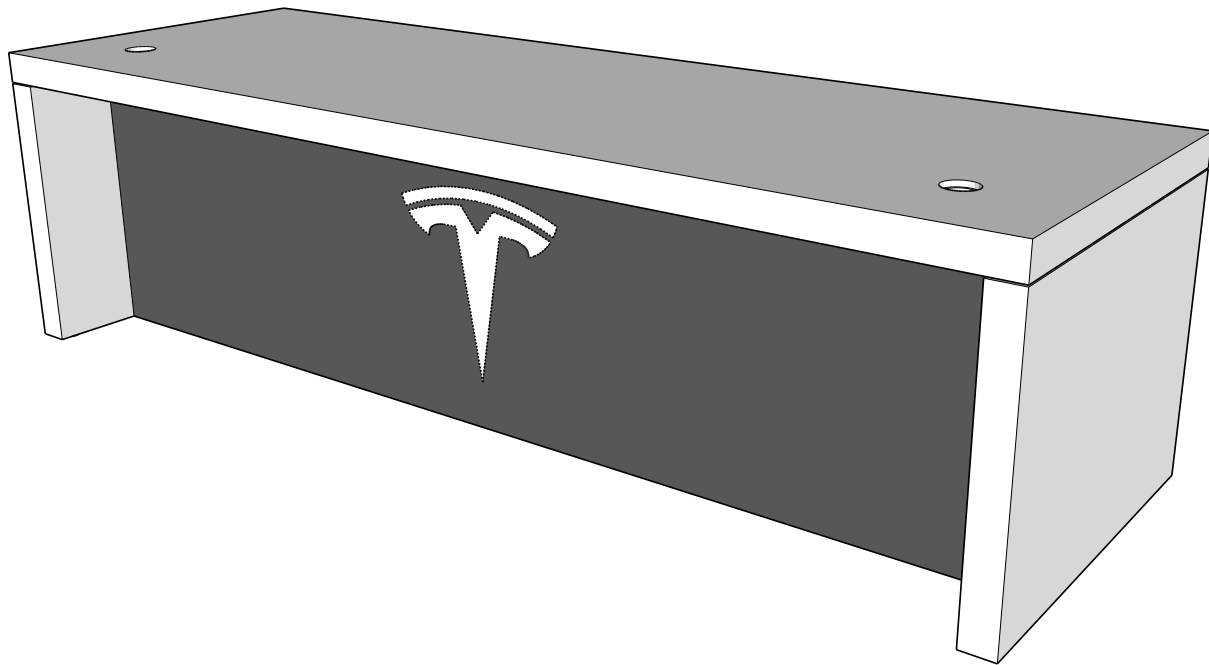
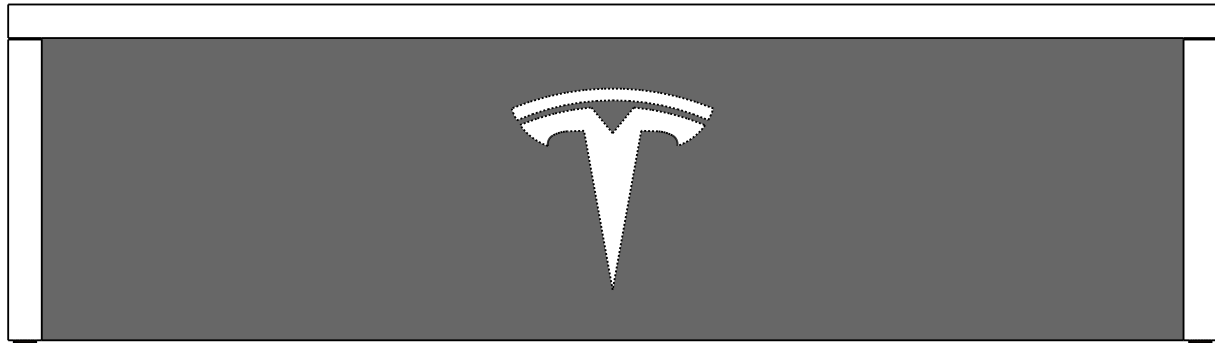
M610

M150

## DESK | RECEPTION 6' Service | Paired with M610

Estimated Lead Time: 4 Weeks

Tesla Millwork Vendor - Silverstar  
Panolam Nevamar Chalk White S7024  
Finish: ARP (T-) Low Gloss, textured finish with 8.5 Nominal Gloss Units  
Standard High Pressure Laminate typical | Thru color HPL for exposed edges  
Formica Laminate 912 Storm Matte Finish 58 | 72"W x 36"D x 30"H



00 | INDEX

01 | OPENINGS

02 | FINISH

03 | FF & E

04 | PLUMBING

05 | LIGHTING

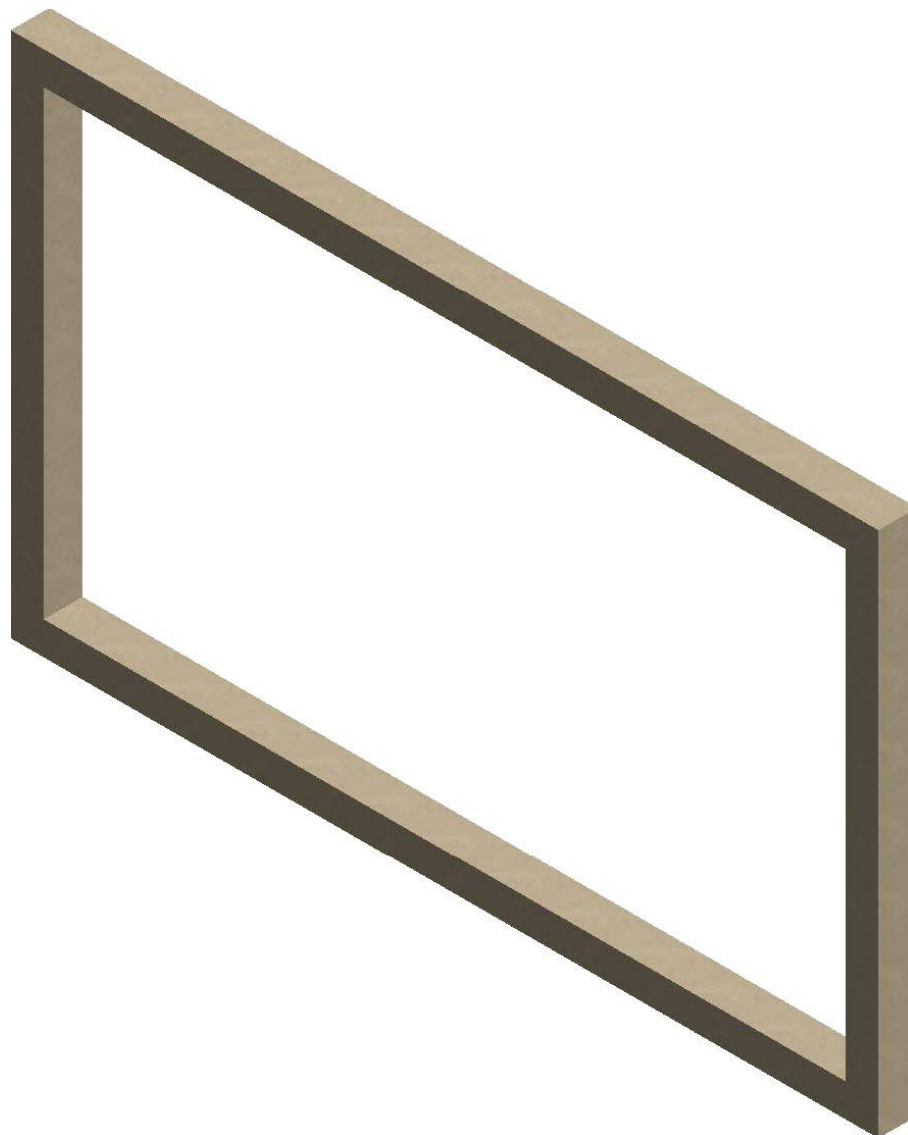
06 | MISC.

## DESK | RECEPTION 9'

### Service | Paired with M610

Estimated Lead Time: 4 Weeks

Tesla Millwork Vendor - Silverstar  
 Panolam Nevamar Chalk White S7024  
 Finish: ARP (T-) Low Gloss, textured finish with 8.5 Nominal Gloss Units  
 Standard High Pressure Laminate typical | Thru color HPL for exposed edges  
 Formica Laminate 912 Storm Matte Finish 58 | 108"W x 36"D x 30"H



00 | INDEX

01 | OPENINGS

02 | FINISH

03 | FF & E

04 | PLUMBING

05 | LIGHTING

06 | MISC.

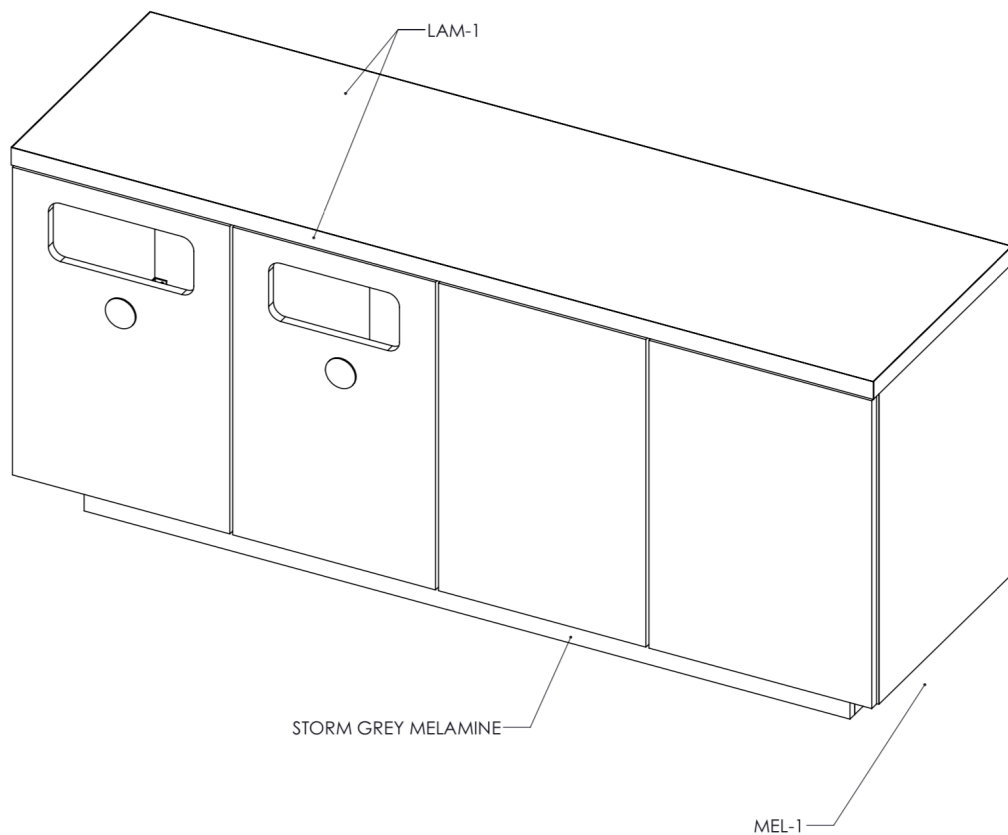
## FRAME | 49" TOUCHSCREEN

Cavity Behind Graphics | Cut X in fabric + staple fabric to inside face of frame  
To be Used with E510 49" Touch Screen

Estimated Lead Time: 4 Weeks

Tesla Millwork Vendor | Silverstar  
Solid Poplar wood | unpainted 36.5"W x 22"H inside clear dimension

M510 Non Illuminated Graphics 1.5"W x 1.875"D



00 | INDEX

01 | OPENINGS

02 | FINISH

03 | FF & E

04 | PLUMBING

05 | LIGHTING

06 | MISC.

## COFFEE BAR Service Lounge

Estimated Lead Time: 4 Weeks

Tesla Millwork Vendor

Panolam Nevamar Chalk White S7024

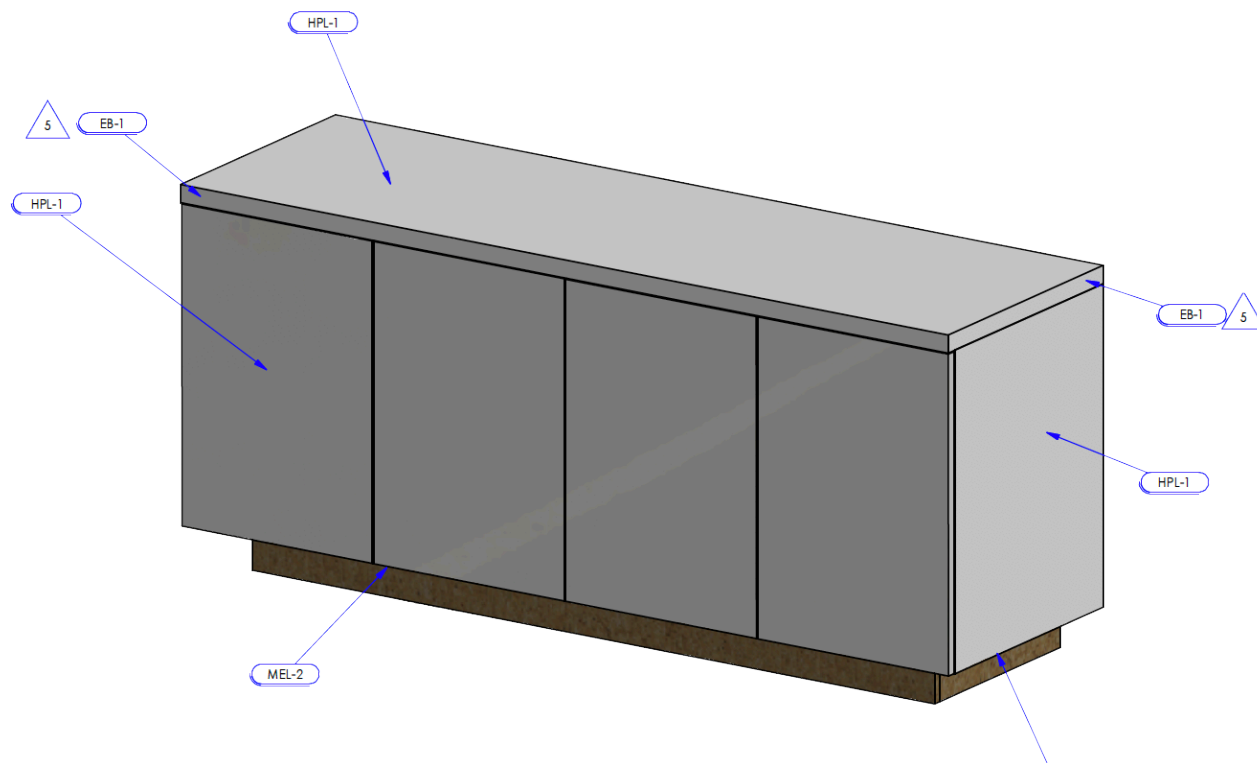
Finish: ARP (T-) Low Gloss, textured finish with 8.5 Nominal Gloss Units

Standard High Pressure Laminate typical | Thru color HPL for exposed edges

4" H Base: Formica Laminate 912 Storm Matte Finish 58

72" W X 22" D X 32" H





M610

M150

## CREDENZA

Locate behind Receptionist or Advisor desks

Estimated Lead Time: 4 Weeks

Tesla Millwork Vendor  
 Panolam Nevamar Chalk White S7024  
 Finish: ARP (T-) Low Gloss, textured finish with 8.5 Nominal Gloss Units  
 Standard High Pressure Laminate typical | Thru color HPL for exposed edges  
 Base: Formica Laminate 912 Storm Matte Finish 58  
 72"x22"x32"



00 | INDEX

01 | OPENINGS

02 | FINISH

03 | FF &amp; E

04 | PLUMBING

05 | LIGHTING

06 | MISC.

**PEDESTAL FOR WALL CONNECTOR | 2" x 6" | NO SIGN NO BRACKET**  
**Wall Connector Display in Showroom and Exterior Wall Connectors**

6"W x 2"D x 47"H | 1 sided and 2 sided wall connector mounting

[https://www.tesla.com/sites/default/files/pdfs/charging\\_docs/installing-pedestal-for-tesla-wall-connector.pdf](https://www.tesla.com/sites/default/files/pdfs/charging_docs/installing-pedestal-for-tesla-wall-connector.pdf)

Estimated Lead Time: 4 weeks | Supplied by Tesla Millwork Vendor

Powder Coated Steel | Trout Grey (Dark Grey)



00 | INDEX

01 | OPENINGS

02 | FINISH

03 | FF & E

04 | PLUMBING

05 | LIGHTING

06 | MISC.

## FREE STANDING WALL CONNECTOR DISPLAY POST | 2" x 6"

### Wall Connector Display in Showroom and Exterior Wall Connectors

Estimated Lead Time: 4 weeks | Supplied by Tesla Millwork Vendor

F890: Wall Connector Freestanding Display Post 2"X6" (no sign | no sign bracket)

E246: Wall Connector Gen 3 with 24' Cable, Refurbished/Display model (Energy Ecosystem)

E244: Wall Connector Gen 3 with 24' Cable, For Employee & Customer Use

# BACK OF HOUSE FURNITURE, FIXTURES + EQUIPMENT

**00** | INDEX

**01** | OPENINGS

**02** | FINISH

**03** | FF & E

**04** | PLUMBING

**05** | LIGHTING

**06** | MISC.



00 | INDEX

01 | OPENINGS

02 | FINISH

03 | FF &amp; E

04 | PLUMBING

05 | LIGHTING

06 | MISC.

## FRIGIDAIRE | REFRIGERATOR | FULL SIZE | TOP FREEZER Service Breakroom

Estimated Lead Time: 2 Weeks | Supplied by Home Depot

Frigidaire | Model # FFTR1814TW | 18 cu. ft. | Top Freezer  
White | Energy Star | Reversible Doors | ADA compliant  
30"W x 30 1/8"D x 66 5/8"H | 14 cu ft fridge +4 cu ft freezer = 18 cu ft

<https://www.homedepot.com/p/Frigidaire-18-cu-ft-Top-Freezer-Refrigerator-in-White-FFTR1814TW/301693631>



## MICROWAVE

### Retail Office + Service Breakroom

Estimated Lead Time: 2 Weeks | Supplied by Home Depot

Avanti | MO7192TW  
White | 700 Watts | 17.75"W x 12.75"D x 10.25"H | 0.7 cu ft

<https://www.amazon.com/Avanti-MO7191TW-Electronic-Microwave-Touch/dp/B0028NZW8C>



00 | INDEX

01 | OPENINGS

02 | FINISH

03 | FF & E

04 | PLUMBING

05 | LIGHTING

06 | MISC.

## COFFEE MAKER | EMPLOYEE

### Keurig® K155 Small/Medium Office Brewer

Estimated Lead Time: 2 Weeks | Supplied by Office Depot

Keurig | K155 Office PRO | 15 Users  
Brushed Stainless Steel | Black | 10.4"W x 14"D x 13.9"H | 90 oz reservoir

<https://www.officedepot.com/a/products/218970/Keurig-K155-SmallMedium-Office-Brewer-Black/>



**COFFEE MAKER | EMPLOYEE**  
**Mr. Coffee | Breakroom Coffee Maker | White**

Estimated Lead Time: 2 Weeks | Supplied by Office Depot

Poly Resin (Plastic) | White | 9"W x 6"D x 13"H | 12 Cups

<https://www.officedepot.com/a/products/667572/Mr-Coffee-12-Cup-Programmable-Coffee/>





00 | INDEX

01 | OPENINGS

02 | FINISH

03 | FF &amp; E

04 | PLUMBING

05 | LIGHTING

06 | MISC.

## WATER DISPENSER | EMPLOYEE Service breakroom

Estimated Lead Time: 4 Weeks

WATER LOGIC | WL270 | 15.4 Liters  
Black & Gray | 15.39"W x 45.70"H x 14.40"D)

<https://www.waterlogic.com/en-us/dealers/water-dispenser/products/wl270/>



**E152 - WASHER**

**COMMERCIAL WASHER**  
**BOH | Service area**

Estimated Lead Time: 3 Weeks | Supplied by Home Depot

WHIRLPOOL | CHW9160GW  
1/4" Quick Connect water line | 120/60/1 - 15 Amp | White |  
27"W x 28.81"D x 37.75"H

<https://www.homedepot.com/p/Whirlpool-3-1-cu-ft-High-Efficiency-White-Front-Load-Commercial-Washing-Machine-CHW9160GW/302700351>

**E153 - ELECTRIC****E154 - GAS**

### COMMERCIAL DRYER | SIDE BY SIDE | COMMERCIAL BOH | Service area

Estimated Lead Time: 3 Weeks | Supplied by Home Depot

E153: WHIRLPOOL | CED9160GW | Electric | 120V | 27"W x 29"D x 37.75"H |

<https://www.homedepot.com/p/Whirlpool-6-7-cu-ft-120-Volt-White-Commercial-Electric-Vented-Dryer-CED9160GW/302700635>

E154: WHIRLPOOL | CGD9160GW | Gas Vented | 120V | 27"W x 29"D x 37.75"H |

<https://www.homedepot.com/p/Whirlpool-6-7-cu-ft-120-Volt-White-Commercial-Gas-Vented-Dryer-CGD9160GW/302701150>



00 | INDEX

01 | OPENINGS

02 | FINISH

03 | FF &amp; E

04 | PLUMBING

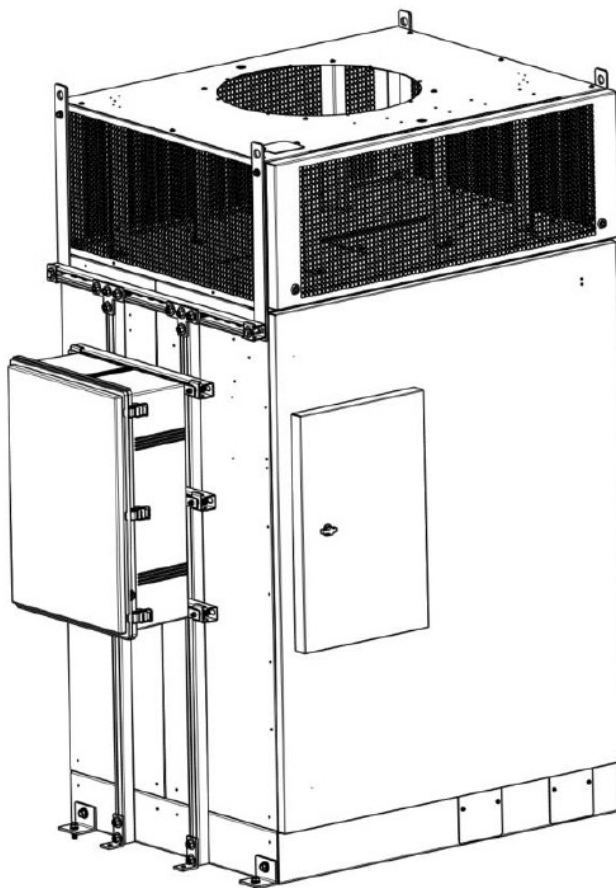
05 | LIGHTING

06 | MISC.

**WALL CONNECTOR GEN 3 WITH 24' CABLE | FOH & BOH  
For Employee & Customer Use**

TESLA Proprietary design  
24' Cable | Customer & Employee Use | PN 1050067-00-E  
Silver and Black | 6.3"W x 5.5"D x 15"H | 208V or 240V AC single-phase

<https://shop.tesla.com/product/silver-wall-connector>



00 | INDEX

01 | OPENINGS

02 | FINISH

03 | FF & E

04 | PLUMBING

05 | LIGHTING

06 | MISC.

## V3 SUPERCHARGER CABINENT | FOH & BOH

TESLA Proprietary design



**SUPERCHARGER CHARGE POST | FOH & BOH**

TESLA Proprietary design  
To be used along with E274 V3 Supercharger Cabinet

- 00 | INDEX
- 01 | OPENINGS
- 02 | FINISH
- 03 | FF & E
- 04 | PLUMBING
- 05 | LIGHTING
- 06 | MISC.

# E293 | E294 | E295 | E296

BIG ASS FAN | ESSENCE SERIES



## BIG ASS FAN | ESSENCE SERIES Big Ass Fan | Back of House | Service Area

8' Diameter | Also available in E294: 10', E295: 12', E296: 14'

<https://www.bigassfans.com/docs/essence/cutsheet-essence.pdf>

TESLA

FF & E - B.O.H.

TESLA NA SPECIFICATIONS 66

00 | INDEX

01 | OPENINGS

02 | FINISH

03 | FF & E

04 | PLUMBING

05 | LIGHTING

06 | MISC.



E515 Samsung TV W/ Magicinfo



CMA105 Ceiling plate 4"  
(102 mm) Ceiling Plate



CMS0XX 24" 36" 48" 60"  
72"



MCM1U TV plate

## E517 CEILING MOUNT KIT

### 55" SCREEN | Samsung | PM55F

#### Service Lounge and Service Area LCD Display With Magicinfo | FOH + BOH

E515: Samsung PH55F | 49.2"W x 3.3"D x 28.7"H | 36.1 lbs

<https://www.samsung.com/us/business/support/owners/product/ph-f-series-digital-signage-ph55f/>

Samsung MagicInfo Remote Management Software Client License BM-MIV2OSS

Estimated Lead Time: 4 Weeks

E517 Ceiling Mount Kit:

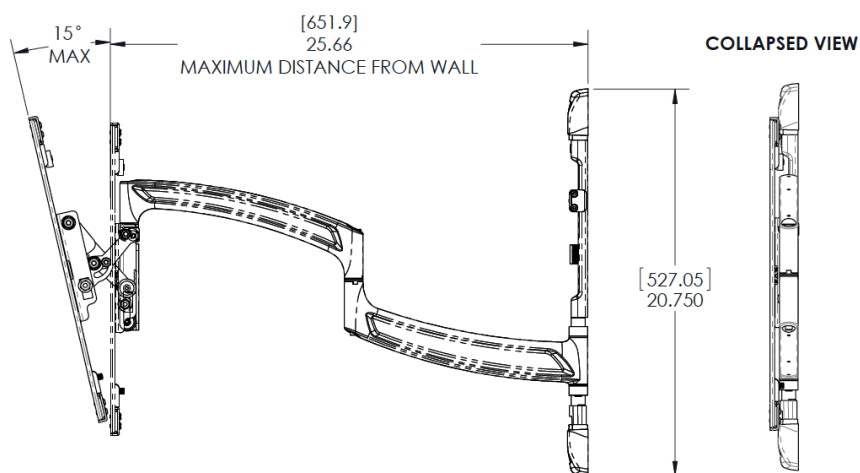
Service area pendant hung: CMA105 Ceiling plate, CMS0XX 24 36 48 60 72" Pendant pipe, MCM1U TV plate:

<https://www.legrandav.com/en/products/chief/accessories/projector/structural/plates/cma105>

<https://www.legrandav.com/en/products/chief/accessories/projector/extension/extension-fixed/cms024>

[https://www.legrandav.com/en/products/chief/mounts/display/ceiling/mcm\\_single\\_display/mcm1u](https://www.legrandav.com/en/products/chief/mounts/display/ceiling/mcm_single_display/mcm1u)





### Medium THINSTALL Dual Swing Arm Wall Display Mount Service Area

Estimated Lead Time: 4 Weeks

Chief TS325TU | 75 capacity | TV Wall Mount | Black

[https://www.legrandav.com/en/products/chief/mounts/display/wall-full\\_swing/ts325t/ts325tu](https://www.legrandav.com/en/products/chief/mounts/display/wall-full_swing/ts325t/ts325tu)

# E519

55" SCREEN MOUNT MOBILE CART



00 | INDEX

01 | OPENINGS

02 | FINISH

03 | FF & E

04 | PLUMBING

05 | LIGHTING

06 | MISC.

## MOBILE CART SCREEN MOUNT | ROLLING TV CART

**Service Area - To be Used with E515 55" display**

(NOT Preferred Cord - due to management Issue)

Estimated Lead Time: 2 Weeks

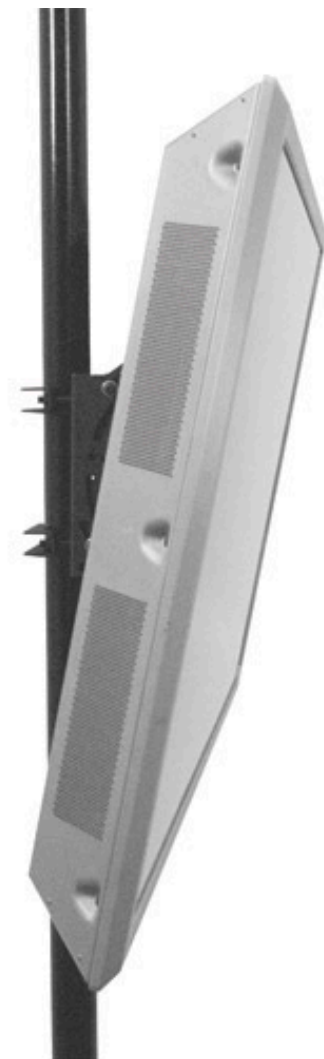
E519: Mount Factory Rolling TV Cart Mobile TV Stand for 40-65 inch Flat Screen, Universal Mount with Wheels

[https://www.amazon.com/Mount-Factory-Rolling-Mobile-Screen/dp/B00RH46N6M/ref=sr\\_1\\_1?ie=UTF8&qid=1516733717&sr=8-1&keywords=B00RH46N6M](https://www.amazon.com/Mount-Factory-Rolling-Mobile-Screen/dp/B00RH46N6M/ref=sr_1_1?ie=UTF8&qid=1516733717&sr=8-1&keywords=B00RH46N6M)

TESLA

FF & E - B.O.H.

TESLA NA SPECIFICATIONS 69



00 | INDEX

01 | OPENINGS

02 | FINISH

03 | FF &amp; E

04 | PLUMBING

05 | LIGHTING

06 | MISC.

**POLE/PITCH - ADJUSTABLE MOUNT**  
**Model: TPM-2000 SERIES | Service Area**

Estimated Lead Time: 4 Weeks

Chief TS325TU | PCConnection | 75 capacity | TV Column/Post Mount | Black

Please Note: Clamps for different size poles and truss work are required and must be ordered separately (see TPK kits and chart)

<https://www.legrandav.com/en/products/chief/mounts/display/truss-pole/tpm/tpm2000b>  
<https://www.legrandav.com/search#q=tpk%20kits&sort=relevancy>



00 | INDEX

01 | OPENINGS

02 | FINISH

03 | FF & E

04 | PLUMBING

05 | LIGHTING

06 | MISC.

## IT SERVER RACK IT Room | Electrical Closet

Estimated Lead Time: 3 Weeks

APC AR3104SP1  
Server Rack NetShelter SX 24U Enclosed Rack  
Black | 23.62"W x 42.13"D x 47.24"H

<https://www.apc.com/shop/us/en/products/NetShelter-SX-24U-600mm-Wide-x-1070mm-Deep-Enclosure-1250-lbs-Shock-Packaging/P-AR3104SP1>

TESLA

FF & E - B.O.H.

TESLA NA SPECIFICATIONS 71



## TIME CLOCK Timeclock Kronos InTouch 9100

Estimated Lead Time: 4 Weeks

Kronos

<https://www.kronos.com/resource/download/7861>



## MOOD MEDIA ProFusion iH Music Player

Power Adapter | 1/8" (3.5mm) AUX to RCA Audio Cable | Ethernet Cable | Profusion  
Remote Control with Tether & Batteries | Micro SD Card already inserted into the player

[https://moodmedia.custhelp.com/app/answers/detail/a\\_id/838](https://moodmedia.custhelp.com/app/answers/detail/a_id/838)



00 | INDEX

01 | OPENINGS

02 | FINISH

03 | FF & E

04 | PLUMBING

05 | LIGHTING

06 | MISC.

**TABLE | FOUR PERSON**  
**Service Conference Room and Service Breakroom | FOH + BOH**

Kahl | Round Multipurpose Table | White | Steel Brushed Disc Base | 42"Dx29"H

<http://www.pcfistributors.com/products/tables/roundmultipurposetables>



00 | INDEX

01 | OPENINGS

02 | FINISH

03 | FF & E

04 | PLUMBING

05 | LIGHTING

06 | MISC.

## SERVICE WORKBENCH

Located at each Workbay | 72"W x 24"D x 42.1"H

1.25" Thick Solid Wood Top | 103 lbs | Seated or Upright Position

<https://www.homedepot.com/p/Husky-6-ft-Adjustable-Height-Solid-Wood-Top-Workbench-in-Red-for-Ready-to-Assemble-Steel-Garage-Storage-System-HOWT72XDB22/313437097#overlay>





## DESK | ADJUSTABLE MANUAL | 5' Office

IKEA | SKARSTA Desk | Sit/Stand | White  
Particle- and Fiber board and powder coated steel legs  
Max Load 110 lbs | 63"W x 31-1/2"D x 27-1/2" - 47-1/4"H

<https://www.ikea.com/us/en/p/skarsta-desk-sit-stand-white-s89324812/>

# F210 | F215 | F216 | F217

CABINET 36"X30" | 2 DOORS

00 | INDEX

01 | OPENINGS

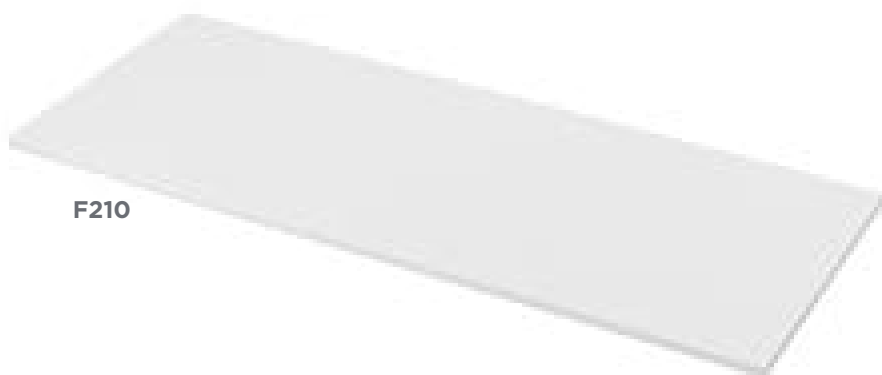
02 | FINISH

03 | FF & E

04 | PLUMBING

05 | LIGHTING

06 | MISC.



F210



F215



F216



F217

## BREAKROOM COUNTERTOP | CABINET 36"W x 30"H (2 DOORS) | HANDLES | CABINET LEGS

### Service Breakroom

Estimated Lead Time: 2 weeks | Supplied by IKEA

**F210** 502.808.28 LILLTRASK 6' COUNTERTOP White particle board | 74"W x 25 5/8"D x 1 1/8"H

<https://www.ikea.com/us/en/p/lilltraesk-countertop-white-laminate-50280828/>

**F215** 490.343.91 One SEKTION BASE CABINET SE B2D with 2 Hageby White doors | 36"W x 24"D x 30"H

<https://www.ikea.com/us/en/p/sektion-wall-cabinet-with-2-doors-white-hageby-white-s59372753/>

**F216** 601.387.59 LANSÅ HANDLES | Stainless steel | 2 pack

<https://www.ikea.com/us/en/p/tyda-handle-stainless-steel-70116931/>

**F217** 302.635.75 One SEKTION CAPITA 4"H LEG | Stainless steel | 4 pack

<https://www.ikea.com/us/en/p/capita-leg-white-30263575/>



00 | INDEX

01 | OPENINGS

02 | FINISH

03 | FF &amp; E

04 | PLUMBING

05 | LIGHTING

06 | MISC.

**CABINET 15"W x 30"H (SINGLE DRAWER & DOOR) | WHITE**  
Office

IKEA | SEKTION MAXIMERA Cabinet | With drawer & door | White  
Particle board | 15"W x 24"D x 30"H

Use with F210 LILLTRASK 6' COUNTERTOP & F217 SEKTION CAPITA

<https://www.ikea.com/us/en/p/sektion-maximera-base-cabinet-with-drawer-door-white-haeggeby-white-s19354398/>



00 | INDEX

01 | OPENINGS

02 | FINISH

03 | FF &amp; E

04 | PLUMBING

05 | LIGHTING

06 | MISC.

**CABINET 15"W x 30"H (SINGLE DOOR) | WHITE**  
Office

IKEA | SEKTION Cabinet | With door | White  
Particle board | 15"W x 24"D x 30"H

Use with F210 LILLTRASK 6' COUNTERTOP & F217 SEKTION CAPITA

<https://www.ikea.com/us/en/p/sektion-base-cabinet-with-shelves-white-haeggeby-white-s69378858/>

# F225 | F226 | F227

WALL CABINET 40"



F225



F226



F227

## WALL CABINET (NO DOORS) | SHELF | SUSPENSION RAIL

Service breakroom

Estimated Lead Time: 2 weeks | Supplied by IKEA

F225 602.654.60 SEKTION Wall cabinet frame | White | 36"W x 14-3/4"D x 40"H

<https://www.ikea.com/us/en/p/sektion-wall-cabinet-frame-white-60265460/>

F226 402.655.26 UTRUSTA | Shelf | White | 36"W x 14-3/4"D

<https://www.ikea.com/us/en/p/utrusta-shelf-white-40265526/>

F227 602.615.27 SEKTION Suspension rail | Galvanized Steel | 84"

<https://www.ikea.com/us/en/p/sektion-suspension-rail-galvanized-60261527/>

00 | INDEX

01 | OPENINGS

02 | FINISH

03 | FF & E

04 | PLUMBING

05 | LIGHTING

06 | MISC.



00 | INDEX

01 | OPENINGS

02 | FINISH

03 | FF & E

04 | PLUMBING

05 | LIGHTING

06 | MISC.

**CHAIR | BLACK MESH**  
**Office | Conference Room | FOH + BOH**

Estimated Lead time: 2 weeks | Supplied by Office Depot

Realspace® Calusa Mesh Managerial Mid-Back Chair, item #857562 | MFG# H-8881FB  
 Black | 28-1/4"W x 27-3/8"D x 37-3/4" - 41-1/4"H

<https://www.officedepot.com/a/products/857562/Realspace-Calusa-Mesh-Managerial-Mid-Back/>

# F306

HIGH OFFICE CHAIR | BLACK MESH



00 | INDEX

01 | OPENINGS

02 | FINISH

03 | FF & E

04 | PLUMBING

05 | LIGHTING

06 | MISC.

## HIGH OFFICE CHAIR | BLACK MESH Office | Service Advisor | FOH + BOH

Estimated Lead time: 2 weeks | Supplied by Office Depot

Flash Furniture Ergonomic Mesh Mid-Back Drafting Chair, item #4866295  
Black | 49-1/2"H x 27"W x 27"D

<https://www.officedepot.com/a/products/4866295/Flash-Furniture-Ergonomic-Mesh-Mid-Back/>



## CHAIR | WHITE Breakroom

Teknion | Chair Volume | #1455765 | White Body | Stainless steel legs  
33"H X 27.5"D X 23"W

<https://www.architonic.com/en/product/teknion-volume/1455765>





00 | INDEX

01 | OPENINGS

02 | FINISH

03 | FF &amp; E

04 | PLUMBING

05 | LIGHTING

06 | MISC.

## CREDENZA | SLIDING DOORS

### Office

IKEA | 303.651.35 | Galant Cabinet with Sliding Doors  
White Particle Board | 63"W x 17-3/4" D x 47-1/4"H

<https://www.ikea.com/us/en/catalog/products/80365133/#/30365135>



00 | INDEX

01 | OPENINGS

02 | FINISH

03 | FF & E

04 | PLUMBING

05 | LIGHTING

06 | MISC.

## LATERAL CABINET | 2 DRAWER Office

Estimated Lead Time: 2 Weeks | Supplied by Office Depot

WorkPro | 370217 | 2Drawer Lateral File Cabinet | Legal Size |  
Light Gray | 42"W x 18-5/8"D x 28"H

[https://www.officedepot.com/a/products/370217/WorkPro-LetterLegal-Size-Metal-Lateral-File/?jsessionid=0000\\_XH82kFdZ6UE-97v1die8lg:17h4h7bfo](https://www.officedepot.com/a/products/370217/WorkPro-LetterLegal-Size-Metal-Lateral-File/?jsessionid=0000_XH82kFdZ6UE-97v1die8lg:17h4h7bfo)



00 | INDEX

01 | OPENINGS

02 | FINISH

03 | FF &amp; E

04 | PLUMBING

05 | LIGHTING

06 | MISC.

### LOCKABLE FILE CABINET | 2 DRAWER | PEDASTAL Office

Estimated Lead Time: 2 Weeks | Please Order "White" Color, NOT Black.

IKEA | Erik Drawer | 301.518.08 | 2 drawers on casters | White  
White Particle board | 16-1/8"W x 19-5/8"D x 22-1/2"H

<https://www.ikea.com/us/en/p/erik-drawer-unit-w-2-drawers-on-casters-black-60341001/>

# F750

FILE CABINET | 9 DRAWER | WHITE



00 | INDEX

01 | OPENINGS

02 | FINISH

03 | FF & E

04 | PLUMBING

05 | LIGHTING

06 | MISC.

## FILE CABINET | 9 DRAWER Office | For California DMV paperwork

Estimated Lead Time: 2 Weeks

IKEA | Alex drawer | 904.861.39  
White Particle Board | 14"W x 19"D x 45.5"H

<https://www.ikea.com/us/en/p/alex-drawer-unit-with-9-drawers-white-90486139/>

TESLA

FF & E - B.O.H.

TESLA NA SPECIFICATIONS 87



## KEY CABINET SMALL | 24 KEYS

Service office

Estimated Lead Time: 3 Weeks

The Valet Spot | 24 Keys  
Black | 18"W x 6"D x 21.5"H | 20 lbs

<https://www.thevaletspot.com/24-key-box/>



00 | INDEX

01 | OPENINGS

02 | FINISH

03 | FF & E

04 | PLUMBING

05 | LIGHTING

06 | MISC.

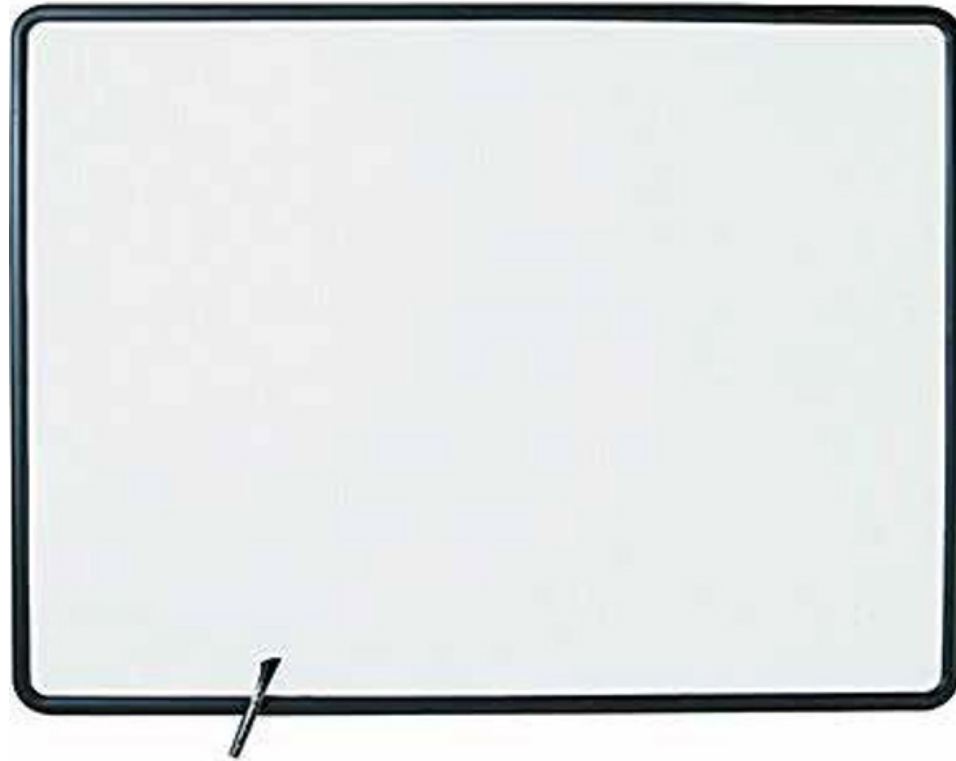
## KEY CABINET LARGE | 50 KEYS

Service office

Estimated Lead Time: 3 Weeks

The Valet Spot | 50 Keys  
Black | 21.5"W x 4"D x 27"H | 25 lbs

<https://www.thevaletspot.com/portable-valet-key-boxes-50-key>



00 | INDEX

01 | OPENINGS

02 | FINISH

03 | FF & E

04 | PLUMBING

05 | LIGHTING

06 | MISC.

## DRY ERASE WHITE BOARD

### Office

Estimated Lead Time: 2 Weeks

Staples | 28681-CC | Standard Durable Melamine Dry-Erase Whiteboard  
Black Aluminum Frame | 4'W x 3'H

[https://www.staples.com/Quartet-Contour-Melamine-Dry-Erase-Boards-with-Textured-Plastic-Frame-4-x/product\\_782359?akamai-feo=off](https://www.staples.com/Quartet-Contour-Melamine-Dry-Erase-Boards-with-Textured-Plastic-Frame-4-x/product_782359?akamai-feo=off)

TESLA

FF & E - B.O.H.

TESLA NA SPECIFICATIONS 90



## COAT HOOK Office

Estimated Lead Time: 2 Weeks

The Container Store | 10007059 Deco Four Hook Rack  
Stainless Steel | 12.25"W x 1.25"D x 1.5"

<https://www.containerstore.com/s/stainless-steel-deco-hook-racks/d?productId=10005132&q=coat%20hook>





00 | INDEX

01 | OPENINGS

02 | FINISH

03 | FF & E

04 | PLUMBING

05 | LIGHTING

06 | MISC.

## Breakroom Lockers (1 Unit: 3 tall x 1 wide) 12"W x 15"D x 24"H UH1258-3A | Dark Grey

Estimated Lead Time: 4 Weeks | Please Order "Dark Gray" Color, NOT Tan.

ValueMax Triple Tier Lockers - 3 Openings - 1-Wide  
Gray | 12"W x 15"D x 24"H (Overall 78"H)

<https://hallowell-mf.com/p/ValueMax-Triple-Tier-Lockers--3-Openings--1Wide>



00 | INDEX

01 | OPENINGS

02 | FINISH

03 | FF & E

04 | PLUMBING

05 | LIGHTING

06 | MISC.

**Uniform Lockers (1 Unit: 2 tall x 1 wide)**  
**12"W x 18"D x 36"H UH1288-2A | Locker Room**

Estimated Lead Time: 4 Weeks | Please Order "Dark Gray" Color, NOT Tan.

ValueMax Double Tier Lockers - 2 Openings - 1 Wide  
 Dark Gray | 12" W x 18" D x 36" H (Overall 78"H)

<https://hallowell-mf.com/p/ValueMax-Double-Tier-Lockers--2-Openings--1-Wide>



00 | INDEX

01 | OPENINGS

02 | FINISH

03 | FF & E

04 | PLUMBING

05 | LIGHTING

06 | MISC.

## BENCH | STANDARD Locker Room

Estimated Lead Time: 2 Weeks

Global Industrial | T9F183670 Hardwood Top w/S teel Tube Pedestals  
Maple| 72"W x 9.5"D x 1.25"thick x 17"H

<https://www.globalindustrial.com/>

TESLA

FF & E - B.O.H.

TESLA NA SPECIFICATIONS 94



## BENCH | ACCESSIBLE Locker Room

Estimated Lead Time: 2 Weeks

Global Industrial | T9F269861 Hardwood Top and back w/ Steel Tube Pedestals  
Maple | 42"W x 24"D x 1.25"thick x 17"H

<https://www.globalindustrial.com/>



00 | INDEX

01 | OPENINGS

02 | FINISH

03 | FF & E

04 | PLUMBING

05 | LIGHTING

06 | MISC.

## WASH BAY CURTAIN GREY BOH | Wash Bays

Estimated Lead Time: 6 Weeks

Akon Curtain and Divider

Custom Size and Materials | Min. 15' High, Clear Top w/ 4' Grey Fabric Bottom |

<https://www.curtain-and-divider.com/wash-down-curtains/industrial-wash-bay-curtains/>



**DELIVERY BAY CURTAIN | BLACK**  
**BOH | Delivery**

Estimated Lead Time: 6 Weeks

Ebay Store | Peaks Tarps Company

Custom Size and Materials | Black Stage Curtain/Backdrop 15'H x 30'W

<https://www.ebay.com/str/tarpsandcordura>

<https://www.ebay.com/itm/154506852445?hash=item23f953785d:g:NoYAAOSw2GIXD-ch>

**TESLA**

FF & E - B.O.H.

TESLA NA SPECIFICATIONS 97

# F995 | F996

F995: ROUND 4' COLUMN PADDING | F996: SQUARE 4' COLUMN PADDING



**F995**



**F996**

## RED 4'H COLUMN PADDING Back of House Service Area

Estimated Lead Time: 2 Weeks

AK ATHLETICS | Column Padding | RED

Round: (also available: 2, 3, 4, 5, 6, 7, 8 & 9" dia)

Square: (also available: 4, 5, 6, 7, 8, 9, 10 & 11" sq.)

4' Tall Padding | **F955**: Round Padding 4' Tall | **F956**: Square Padding 4' Tall

<https://akathletics.com/collections/pole-pads-and-column-pads>

**TESLA**

FF & E - B.O.H.

TESLA NA SPECIFICATIONS 98

00 | INDEX

01 | OPENINGS

02 | FINISH

03 | FF & E

04 | PLUMBING

05 | LIGHTING

06 | MISC.



# PLUMBING

<b>01</b>   OPENINGS
<b>02</b>   FINISH
<b>03</b>   FF & E
<b>04</b>   PLUMBING
<b>05</b>   LIGHTING
<b>06</b>   MISC.



TAG	DESCRIPTION	MANUFACTURER	PRODUCT ID	MOUNTING	FINISH	FINISH CODE	DESCRIPTION
<a href="#">P100</a>	URINAL	Kohler	K5452 ET O	Wall	White Vitreous China	0	Dexter siphone jet wall mount .125gpf urinal with top spud, ADA rim at +17" AFF
<a href="#">P101</a>	URINAL FLUSHOMETER	Kohler	K76317 CP	Top	Polished Chrome	CP	Prime manual flushometer valve for .125 gpf washdown urinal
<a href="#">P102</a>	TOILET   FLOOR MOUNTED	American Standard	3378.128ST	Floor	White Vitreous China	020	Cadet Suite 3 Right Height Elongated 1.28gpf, Flowise, 12" rough in, High efficiency toilet, 16.5" rim height a.f.f.
<a href="#">P103</a>	TOILET SEAT	Kohler	K4670C	N/A	White	020	Lustra elongated open front toilet seat with check hinge
<a href="#">P106</a>	TOILET   WALL HUNG	Kohler	K4325-0	Wall	White Vitreous China	0	Kingston high efficiency wall mounted 1.28 gpf flushometer valve toilet bowl with top inlet and bedpan lugs
<a href="#">P107</a>	TOILET SEAT   WALL HUNG	Kohler	K4731 C O	Top	White	0	Stronghold Commercial heavy duty toilet seat elongated, open front.
<a href="#">P108</a>	TOILET FLUSHOMETER   WALL HUNG	Kohler	K13517 CP	Top	Polished Chrome	CP	Manual 1.28gpf WC Flushometer
<a href="#">P109</a>	LAVATORY SINK	Kohler	K-2882-0 WITH OVERFLOW	Under Mount	White Vitreous Sink	0	Verticyl, With overflow Includes 1193643 clamp assembly Provide K8998-CP Adjustable chrome plated p trap with clean out plug.
<a href="#">P110</a>	FAUCET AUTOMATIC CUS-TOMER	American Standard	6055.202 1.5 GPM 6055.205 .5 GPM	N/A	Polished Chrome	002	
<a href="#">P111</a>	MIXING VALVE	American Standard	605XTMV1070	N/A		304	Selectronic Thermostat-ic Mixing Valve
<a href="#">P112</a>	18" GRAB BAR	Bobrick	B5806 X 18	Surface	Satin SS	304	1 1/4" diameter stainless steel grap bars with snap flange
<a href="#">P113</a>	36" GRAB BAR	Bobrick	B5806 X 36	Surface	Satin SS	304	1 1/4" diameter stainless steel grap bars with snap flange
<a href="#">P114</a>	42" GRAB BAR	Bobrick	B5806 X 42	Surface	Satin SS	304	1 1/4" diameter stainless steel grap bars with snap flange
<a href="#">P115</a>	PAPER TOWEL DISPENSER	Bobrick	B686	Surface	Bright Polished SS		Double Roll
<a href="#">P116</a>	TOILET SEAT COVER DIS-PENSER	Bobrick	B221	Surface	Satin SS	304	Classic series
<a href="#">P117</a>	MIRROR	Bobrick	B165 1836	Surface			Framed mirror 18"x36" 46mmx91mm
<a href="#">P118</a>	WASTE BASKET	Bobrick	B2280	Surface			Classic Freestanding waste receptacle
<a href="#">P119</a>	PAPER TOWEL DISPENSER	Bobrick	B4262	Surface	Satin SS	304	Contura Paper Towel Dispenser
<a href="#">P120</a>	TOILET PARTITION	Bobrick	1540	Floor	Slate Grey		Classic Series 1540 Partitions
<a href="#">P121</a>	TOILET TISSUE DISPENSER	Bobrick	B6977	Recessed	Satin SS	304	Double roll without hood
<a href="#">P122</a>	RECESSED PAPER TOWEL DISPENSER & WASTE RECEPTACLE	Bobrick	B3803	Fully Re-cessed	Satin SS	304	13"W X 55-1/8"H X 4-3/16"D   9/16" projection
<a href="#">P123</a>	RECESSED CONVERTIBLE PAPER TOWEL DISPENSER & WASTE RECEPTACLE	Bobrick	B3944	Semi Recessed	Satin SS	304	17-3/16"W X 56"H X 8-1/8"D   4-1/8" projection
<a href="#">P124</a>	SOAP DISPENSER	Bobrick	B8226	Counter	Bright Polished SS		6"L X 4"D

TAG	DESCRIPTION	MANUFACTURER	PRODUCT ID	MOUNTING	FINISH	FINISH CODE	DESCRIPTION
<a href="#">P125</a>	HAT AND COAT HOOK	Bobrick	B6827	Surface	Satin SS	304	Two hooks on the back of the unisex toilet room door   1"W X 6-1/2"H X 31/16"D
<a href="#">P126</a>	SOAP DISPENSER	Bobrick	B848615	Wall	Satin SS		
<a href="#">P127</a>	LAVATORY SINK	American Standard	0321.075	Wall	White	020	Declyn wall mount sink
<a href="#">P128</a>	CONCEALED ARMS SINK SUPPORT		0520-429				
<a href="#">P129</a>	FAUCET TWO HANDLE	American Standard	5502.175	Top	Polished Chrome	CP	Monterrey two handle centerset lavatory faucet with conventional spout.
<a href="#">P130</a>	BREAKROOM SINK	Elkay	CR1721	In Counter			
<a href="#">P131</a>	BREAKROOM FAUCET	American Standard	9316.450.002		Polished Chrome		Jocelyn two handle kitch faucet with brass 12" high gooseneck spout
<a href="#">P132</a>	FLOOR MOP SINK	Fiat	MSB 2424				10" deep ss dome strainer and lint basket, molded stone
<a href="#">P133</a>	FLOOR MOP SINK FAUCET	Fiat	830AA				
<a href="#">P134</a>	MOP SINK	Stern Williams	MTB 2424				10" Portland cement, 8" deep inside, cast brass drain with ss stainer
<a href="#">P135</a>	MOP SINK FAUCET	Chicago Faucet	897 CP				
<a href="#">P136</a>	JANITOR SINK SERVICE	Griffin	T60-144		SS	304	Includes a faucet and a basket
<a href="#">P137</a>	JANITOR/FLOOR FAUCET	Griffin	FG-105				8" centers, 2 handles, 5" gooseneck
<a href="#">P138</a>	3.5" BASKET DRAIN	Griffin	WA-351				
<a href="#">P139</a>	ACCESS COVER AND PLUG	Zurn	Z1468	Tile	SS		Access cover, include clean out plug 58604-COX, where X=size of pipe
<a href="#">P140</a>	FLOOR DRAIN	Zurn	FD-2321-ST-CP	Tile	Chrome Plated		Low profile finished area floor drain. Cast iron body. Furnish trap primer connection. Chrome plated strainer.
<a href="#">P141</a>	SANITARY NAPKIN DISPOSAL	Bobrick	B270	Wall	Satin SS	304	Contura surface mounted sanitary napkin disposal
<a href="#">P142</a>	TOILET BRUSH HOLDER	Bobrick	B544	Wall	Satin SS	304	
<a href="#">P143</a>	WATER HEATER	AO Smith	DEL 20	Under Counter			
<a href="#">P144</a>	DRINKING FOUNTAIN	Elkay	VRCTLSCDDSC VRCTLRSCDDSC				VRCTLSCDDSC left unit high VRCTLRSCDDSC right unit high
<a href="#">P145</a>	INSTANT WATER HEATER	Chronomite	SR-20L	Wall in adjacent office or wall below counter	White		Tankless electric, 41 degree temp rise @ .4gpm and 22 degree temp rise @ .75 gpm. mo below counter, u.l. listed, 2400 watts, 120v power supply, 20a breaker
<a href="#">P146</a>	HOSE BIBB	Chicago Faucet	387-012JKRCF	Wall	Chrome Plated		
<a href="#">P147</a>	UNDERSINK PIPING COVERS	Tru Bro	102EZ		White		
<a href="#">P148</a>	MIRROR   VERTICAL	Porcelanosa	N806070857-100042621	Surface			Smart line mirror 18" x 36" Ron Abbott Tesla account representative t: 408 592 3553 e: rabbott@porcelanosa-usa.com
<a href="#">P149</a>	SINK	Porcelanosa	100090018-N377001040	Wall			City 32" wide Ron Abbott Tesla account representative t: 408 592 3553 e: rabbott@porcelanosa-usa.com
<a href="#">P150</a>	AUTOMATIC FAUCET	American Standard	250B.102.002				Flow rate 1.5gpm
<a href="#">P151</a>	POWER KIT - PLUG-IN AC	American Standard	PK00.PAC				

TAG	DESCRIPTION	MANUFACTURER	PRODUCT ID	MOUNTING	FINISH	FINISH CODE	DESCRIPTION
<a href="#">P152</a>	AUTOMATIC LIQUID SOAP DISPENSER	Bobrick	B2012	Wall	Satin SS	304	Satin Stainless Steel   4"W x 4"D x 10-1/2"H   850 ml (30-fl oz)
<a href="#">P153</a>	SOAP FOAM DISPENSER	Bobrick	B2013	Surface	Satin SS	304	Satin Stainless Steel   4-1/4"W x 10-17/32"H x 4-7/32"D   4-7/32" projection
<a href="#">P154</a>	STAND FOR SOAP DISPENSER	Bobrick	B2000		Satin SS	304	Use for F152 & F153   Satin Stainless Steel   16"W x 62-1/8"H x 16"D   1-1/2"dia tube
<a href="#">P155</a>	PAPER TOWEL DISPENSER AND WASTE RECEPTACLE	Bobrick	B380349	Surface	Satin SS	304	Paper towel C fold and multifold towels   Receptacle 3.8-gal* (14.4-L)
<a href="#">P156</a>	SEMI-RECESSED PAPER TOWEL DISPENSER AND WASTE RECEPTACLE	Bobrick	B38032		Satin SS	304	Paper towel 600 C-fold, 800 multifold or 1100 single fold towels   Receptacle 6.3-gal. (24-L)
<a href="#">P157</a>	CONVERTIBLE PAPER TOWEL DISPENSER AND WASTE RECEPTACLE	Bobrick	B3949	Surface	Satin SS	304	Paper towel 600 C-fold or 800 multifold towels   Receptacle 12*-gal. (45.5-L)
<a href="#">P158</a>	RECESSED CONVERTIBLE PAPER TOWEL DISPENSER AND WASTE RECEPTACLE	Bobrick	B3940		Satin SS	304	Paper towel 600 C-fold or 800 multifold towels   Receptacle 6*-gal. (22.7-L)
<a href="#">P159</a>	RECESSED TOILET-SEAT-COVER DISPENSER	Bobrick	B3013		Satin SS	304	Flush lock   Door has 90° return, conceals flange   Dispenses 500 toilet seat covers.
<a href="#">P160</a>	RECESSED TOILET-SEAT-COVER DISPENSER	Bobrick	B301		Satin SS	304	For 3-5/8" stud wall
<a href="#">P161</a>	SANITARY NAPKIN DISPOSAL	Bobrick	B354	Partition	Satin SS	304	Serves two toilet compartments   Plastic receptacle 1/2-gal. (4.6-L)   Two sided through 1/2" to 1-1/4" partition
<a href="#">P162</a>	SANITARY NAPKIN DISPOSAL	Bobrick	B35139	Surface	Satin SS	304	Plastic receptacle 0.6-gal (2.3-L)
<a href="#">P163</a>	RECESSED SANITARY NAPKIN DISPOSAL	Bobrick	B35303		Satin SS	304	Plastic receptacle 1/2-gal. (4.6-L)
<a href="#">P164</a>	SANITARY NAPKIN DISPOSAL	Bobrick	B254	Surface	Satin SS	304	Plastic receptacle 1/2 gal. (4.6-L)
<a href="#">P165</a>	RECESSED SANITARY NAPKIN DISPOSAL	Bobrick	B353		Satin SS	304	Plastic receptacle 1/2-gal. (4.6-L)
<a href="#">P166</a>	EZH2O BOTTLE FILLING STATION	Elikay	LZOTL8WSLK	Surface	Satin SS	304	19"W x 39-1/16"H x 36-3/4"D   Power: 115V/60Hz   Wall Mount   Indoor installation   104 lbs



**URNAL | WALL MOUNTED**  
**Kohler | K5452 ET O**

Dexter | White Vitreous China | 14-3/4"L X 13-3/4"W X 20-3/4"H

<https://www.us.kohler.com/us/dexter-washdown-wall-mount-0.125-gpf-urinal-with-top-spud/productDetail/urinals/1205995.htm>



**URINAL FLUSHOMETER | TOP MOUNTED**  
**Kohler | K76317**

Polished Chrome | 2-1/4" to 5"D X 4-3/8 to 5"W X 13-3/16"H  
0.125 gpf

<https://www.us.kohler.com/us/primme-manual-flushometer-valve-for-0.125-gpf-washdown-urinal/productDetail/flushometers/1163442.htm>

00 | INDEX

01 | OPENINGS

02 | FINISH

03 | FF &amp; E

04 | PLUMBING

05 | LIGHTING

06 | MISC.

# P102

TOILET | FLOOR MOUNTED | WHITE VITREOUS CHINA



00 | INDEX

01 | OPENINGS

02 | FINISH

03 | FF & E

04 | PLUMBING

05 | LIGHTING

06 | MISC.

**TOILET | FLOOR MOUNTED**  
**American Standard | 3378.128ST**

Cadet | White Vitreous China | 30-1/4"L X 17-1/4"W X 30-1/4"H

<https://www.americanstandard-us.com/bathroom/toilets/cadet-3-right-height-elongated-128-gpf-toilet-24230>



00 | INDEX

01 | OPENINGS

02 | FINISH

03 | FF & E

04 | PLUMBING

05 | LIGHTING

06 | MISC.

## TOILET SEAT Kohler | K4670C

Lustra | White | 19-1/8"L X 14-5/16"W

<https://www.us.kohler.com/us/lustra-elongated-toilet-seat-w-check-hinge/productDetail/toilet-seats/418593.htm>



00 | INDEX

01 | OPENINGS

02 | FINISH

03 | FF & E

04 | PLUMBING

05 | LIGHTING

06 | MISC.

**TOILET | WALL HUNG**  
**Kohler | K4325-O**

Kingston | White Vitreous China | 26-1/4"DX 16-1/2"W X 13-1/4"H

<https://www.us.kohler.com/us/kingston-wall-mounted-top-spud-flushometer-bowl/productDetail/commercial-toilets/427267.htm?skuld=405041&brandId=empty&>





**TOILET SEAT | WALL HUNG**  
**Kohler | K4731 C O**

Stronghold | White | 18-3/4"L X 14-1/4"W

<https://www.us.kohler.com/us/stronghold-elongated-toilet-seat-w-integrated-handle-and-check-hinge/productDetail/toilet-seats/424591.htm>

00 | INDEX

01 | OPENINGS

02 | FINISH

03 | FF & E

04 | PLUMBING

05 | LIGHTING

06 | MISC.



00 | INDEX

01 | OPENINGS

02 | FINISH

03 | FF & E

04 | PLUMBING

05 | LIGHTING

06 | MISC.

**TOILET FLUSHOMETER | WALL HUNG | TOP MOUNTED**  
**Kohler | K13517 CP**

Polished Chrome | 2-1/4" to 5"D X 4-3/8 to 5"W X 15-5/8"H  
 1.28 gpf

<https://www.us.kohler.com/us/Manual-toilet-1.28-gpf-flushometer-valve/productDetail/flushometers/428024.htm?brandId=431955>



**LAVATORY SINK | UNDER MOUNTED**  
**Kohler | K-2882-O WITH OVERFLOW**

Verticyl | White Vitreous Sink | 30-1/4"L X 17-1/4"W X 30-1/4"H

<https://www.us.kohler.com/us/verticyl-rectangular-undermount-bathroom-sink/productDetail/bathroom-sinks/427425.htm>

00 | INDEX

01 | OPENINGS

02 | FINISH

03 | FF &amp; E

04 | PLUMBING

05 | LIGHTING

06 | MISC.



00 | INDEX

01 | OPENINGS

02 | FINISH

03 | FF &amp; E

04 | PLUMBING

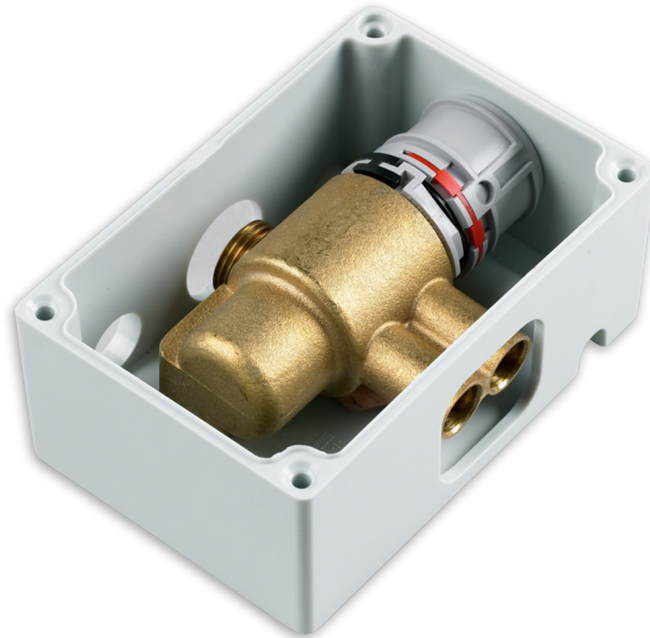
05 | LIGHTING

06 | MISC.

**FAUCET AUTOMATIC CUSTOMER**  
**American Standard | 6055.202**

Innsbrook | Polished Chrome | 6-1/8"W X 4-7/8"H  
1.5 gpm or 0.5 gpm  
P151 Power Kit must be purchased separately

<https://www.americanstandard-us.com/bathroom/commercial-faucets/innsbrook-selectronic-centerset-proximity-faucet-18451>



**MIXING VALVE**  
**American Standard | 605XTMV1070**

Selectronic | 3-3/16"D X 5"W X 3-3/8"H

<https://www.americanstandard-us.com/bathroom/commercial-faucets/selectronic-thermostatic-mixing-valve-17653>



00 | INDEX

01 | OPENINGS

02 | FINISH

03 | FF & E

04 | PLUMBING

05 | LIGHTING

06 | MISC.

**18" GRAB BAR | SURFACE MOUNTED**  
**Bobrick | B5806 X 18**

Satin stainless steel | 18" (L) X 1-1/4" (D)

<http://products.bobrick.com/washroomaccessories/Pages/ProductDetails.aspx?Product+Number%3DB-5806+x+18>



**36" GRAB BAR | SURFACE MOUNTED**  
**Bobrick | B5806 X 36**

Satin Stainless Steel | 36"L X 1-1/4"D

<http://products.bobrick.com/washroomaccessories/Pages/ProductDetails.aspx?Product+Number%3DB-5806+x+36>

00 | INDEX

01 | OPENINGS

02 | FINISH

03 | FF & E

04 | PLUMBING

05 | LIGHTING

06 | MISC.



**42" GRAB BAR | SURFACE MOUNTED**  
**Bobrick | B5806 X 42**

Satin Stainless Steel | 42"L X 1-1/4"D

<http://products.bobrick.com/washroomaccessories/Pages/ProductDetails.aspx?Product+Number%3DB-5806+x+42>

00 | INDEX

01 | OPENINGS

02 | FINISH

03 | FF & E

04 | PLUMBING

05 | LIGHTING

06 | MISC.





00 | INDEX

01 | OPENINGS

02 | FINISH

03 | FF &amp; E

04 | PLUMBING

05 | LIGHTING

06 | MISC.

**PAPER TOWEL DISPENSER | SURFACE MOUNTED**  
**Bobrick | B6867**

Satin Stainless Steel | 12-1/2"W X 2"H X 3-15/16"D

<http://products.bobrick.com/washroomaccessories/Pages/ProductDetails.aspx?Product+Number%3DB-6867>



**TOILET SEAT COVER DISPENSER | SURFACE MOUNTED**  
**Bobrick | B221**

Satin SS | 11"L X 15-3/4"W X 2"D

<http://products.bobrick.com/washroomaccessories/Pages/ProductDetails.aspx?Product+Number%3DB-221>

00 | INDEX

01 | OPENINGS

02 | FINISH

03 | FF & E

04 | PLUMBING

05 | LIGHTING

06 | MISC.



**MIRROR | SURFACE**  
**Bobrick | B165 1836**

Satin Stainless Steel | 18"W X 36"H

<http://products.bobrick.com/washroomaccessories/Pages/ProductDetails.aspx?Product+Number%3DB-165+1836>

00 | INDEX

01 | OPENINGS

02 | FINISH

03 | FF & E

04 | PLUMBING

05 | LIGHTING

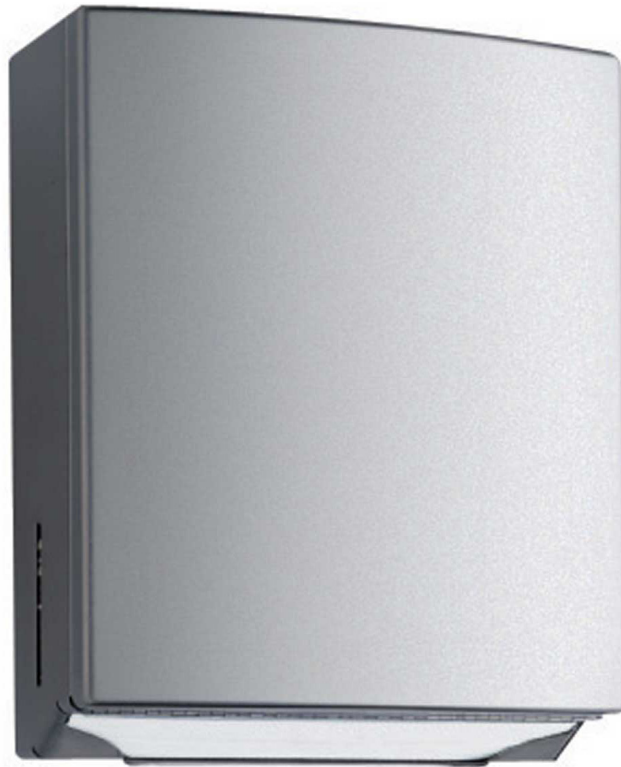
06 | MISC.



**WASTE BASKET | SURFACE MOUNTED**  
**Bobrick | B2280**

Classic | Satin Stainless Steel | 14-7/8"L X 14-7/8"W x 29-1/4"H

<http://products.bobrick.com/washroomaccessories/Pages/ProductDetails.aspx?Product+Number%3DB-221>



00 | INDEX

01 | OPENINGS

02 | FINISH

03 | FF & E

04 | PLUMBING

05 | LIGHTING

06 | MISC.

**PAPER TOWEL DISPENSER | SURFACE**  
**Bobrick | B4262**

Contura | Satin Stainless Steel | 10-13/16"W X 13-1/4"H X 4-7/8"D

<http://products.bobrick.com/washroomaccessories/Pages/ProductDetails.aspx?Product+Number%3DB-4262>



**TOILET PARTITION | FLOOR MOUNTED**  
**Bobrick | 1540**

Estimated Lead Time: 1 Week

Classic | Slate Grey | 70"H

<http://products.bobrick.com/toiletpartitionsystems/Pages/HPLClassicSeries.aspx>

00 | INDEX

01 | OPENINGS

02 | FINISH

03 | FF & E

04 | PLUMBING

05 | LIGHTING

06 | MISC.



**TOILET TISSUE DISPENSER | RECESSED**  
**Bobrick | B6977**

Satin Stainless Steel | 11-3/4"W X 5-1/4"H X 3-3/8"D

<http://products.bobrick.com/washroomaccessories/Pages/ProductDetails.aspx?Product+Number%3DB-221>



00 | INDEX

01 | OPENINGS

02 | FINISH

03 | FF &amp; E

04 | PLUMBING

05 | LIGHTING

06 | MISC.

**RECESSED PAPER TOWEL DISPENSER & WASTE RECEPTACLE | 600 C FOLD**  
**Bobrick | B3803**

Trimline | Satin Stainless Steel | 13"W X 55-1/8"H X 4-3/16"D | 9/16" projection  
 Rough Wall Opening: 11-1/2"W X 53-5/8"H X 3-3/4"D (292 x 1362 x 95mm)  
 For 6" stud wall | Receptacle 6.3 Gal (24L)

<http://products.bobrick.com/washroomaccessories/Pages/ProductDetails.aspx?Product+Number%3DB-3803>





00 | INDEX

01 | OPENINGS

02 | FINISH

03 | FF &amp; E

04 | PLUMBING

05 | LIGHTING

06 | MISC.

**RECESSED CONVERTIBLE PAPER TOWEL DISPENSER & WASTE RECEPTACLE | 600 C FOLD**  
**Bobrick | B3944**

Classic | Satin Stainless Steel | 17-3/16"W X 56"H X 8-1/8"D | 4-1/8" projection  
 Rough Wall Opening: 16"W X 54-3/4"H X 4"D (406 x 1390 x 100mm)

For 3-5/8" stud wall | Receptacle 12 Gallon (45.5L)

[https://www.bobrick.com/wp-content/uploads/B-3944\\_td.pdf](https://www.bobrick.com/wp-content/uploads/B-3944_td.pdf)



**SOAP DISPENSER | IN COUNTER**  
**Bobrick | B8226**

Bright Polished Stainless Steel | 6"L X 4"D

<https://www.bobrick.com/products/washroom-accessories/washroom-accessories-catalog/product/b-8226/>

00 | INDEX

01 | OPENINGS

02 | FINISH

03 | FF & E

04 | PLUMBING

05 | LIGHTING

06 | MISC.



**HAT AND COAT HOOK | SURFACE MOUNTED**  
**Bobrick | B6827**

Satin Stainless Steel | 1"W X 6-1/2"H X 3/16"D

<http://products.bobrick.com/washroomaccessories/Pages/ProductDetails.aspx?Product+Number%3DB-6827>



**SOAP DISPENSER | SURFACE MOUNTED**  
**Bobrick | B818615**

Contura | Satin Stainless Steel | 7"W X 6-1/8"H X 3-5/16"D

<http://products.bobrick.com/washroomaccessories/Pages/ProductDetails.aspx?Product+Number%3D818615>



00 | INDEX

01 | OPENINGS

02 | FINISH

03 | FF & E

04 | PLUMBING

05 | LIGHTING

06 | MISC.

**LAVATORY SINK | WALL MOUNTED**  
**American Standard | 0321.075 | White | 17" (L) X 18-1/2" (W) X 6" (Bowl Depth)**

Declyn | White | 17" (L) X 18-1/2" (W) X 6" (Bowl Depth)

Rear overflow | Soap depression | Faucet ledge | Faucet holes on 4" centers | Holes for concealed arm support

<https://www.americanstandard-us.com/bathroom/commercial-bathroom-sinks/declyn-wall-mounted-sink-15873>



**CONCEALED ARMS SINK SUPPORT | WALL MOUNTED**  
**ZURN | Z1251 | Dura-Coated Support Plate/Steel Arm Sleeves**

<http://products.bobrick.com/washroomaccessories/Pages/ProductDetails.aspx?Product+Number%3DB-165+1836>



**FAUCET TWO HANDLE | TOP MOUNTED**  
**American Standard | 5502.175**

Polished Chrome | 1-3/4"H X 3-3/4"D

.5pgm/1.9l/min pressure compensating aerator | Vandal resistant wrist blade handles | With grid strainer drain

<http://products.bobrick.com/washroomaccessories/Pages/ProductDetails.aspx?Product+Number%3DB-221>



**BREAKROOM SINK | IN COUNTER**  
**Elkay | CR1721**

17"L X 21-1/4"W X 6-7/8"D

<https://www.elkay.com/products/cr1721.html>

00 | INDEX

01 | OPENINGS

02 | FINISH

03 | FF & E

04 | PLUMBING

05 | LIGHTING

06 | MISC.





**BREAKROOM FAUCET**  
**American Standard | 9316.450.002**

Polished Chrome | 10-5/16"W X 12"H

<https://www.americanstandard-us.com/kitchens/kitchen-faucets/jocelyn-2-handle-high-arc-kitchen-faucet-21910>

00 | INDEX

01 | OPENINGS

02 | FINISH

03 | FF & E

04 | PLUMBING

05 | LIGHTING

06 | MISC.



00 | INDEX

01 | OPENINGS

02 | FINISH

03 | FF & E

04 | PLUMBING

05 | LIGHTING

06 | MISC.

**FLOOR MOP SINK | SURFACE MOUNTED**  
**Fiat | MSB 2424**

24"L X 24"W X 10"D

<https://www.fiatproducts.com/products/mop-service-basins/24x24-molded-stone-mop-basin-msb2424/>



**FLOOR MOP SINK FAUCET**  
**Fiat | 830AA**

8"W X 10-1/2"H X 9-3/8"D

<https://www.fiatproducts.com/products/commercial-faucets/service-sink-faucet-830aa/>

00 | INDEX

01 | OPENINGS

02 | FINISH

03 | FF & E

04 | PLUMBING

05 | LIGHTING

06 | MISC.



**MOP SINK**  
**Stern Williams | MTB 2424**

24"L X 24"W X 10"D

<https://sternwilliams.com/mtb-square/>

00 | INDEX

01 | OPENINGS

02 | FINISH

03 | FF & E

04 | PLUMBING

05 | LIGHTING

06 | MISC.



MOP SINK FAUCET  
Chicago Faucet | 897 CP

8"W

<https://www.chicagofaucets.com/products/commercial-faucets/manual/897-CP>

00 | INDEX

01 | OPENINGS

02 | FINISH

03 | FF & E

04 | PLUMBING

05 | LIGHTING

06 | MISC.



**JANITOR SINK SERVICE**  
**Griffin | # TR.144.00 | 304 SS**

29"W X 29-1/2"L x 43"H

Includes F137 Matched janitor/floor faucet & F138 Basket drain

<http://www.griffinproducts.com/shop/product/tr-144-00-trinity-1-comp-24-x-24-1539?attrib=10-46&attrib=9-30>



**ACCESS COVER AND PLUG | TILE**  
**Zurn | Z1468**

Stainless Steel | Round Circular | 5-3/8"DIAMETER

<https://www.zurn.com/products/building-drainage/cleanouts/access-covers/z1468>

00 | INDEX

01 | OPENINGS

02 | FINISH

03 | FF & E

04 | PLUMBING

05 | LIGHTING

06 | MISC.



**FLOOR DRAIN | SQUARE**  
**Zurn | JP2254-CS5-TOP**

Polished Chrome | 5" Square

<https://www.zurn.com/products/building-drainage/floor-drains/finish-floor-shower-drains/jp2254-cs5-top>





**SANITARY NAPKIN DISPOSAL | SURFACE MOUNTED**  
**Bobrick | B-270**

Stainless Steel | 7-1/2" W X 10"H X 3-13/16"D

<https://www.bobrick.com/washroom-accessories-catalog/product/b-270/>

00 | INDEX

01 | OPENINGS

02 | FINISH

03 | FF & E

04 | PLUMBING

05 | LIGHTING

06 | MISC.



**TOILET BRUSH HOLDER**  
**Bobrick | B-554**

Satin Stainless Steel | 15-7/8"H

<https://www.bobrick.com/products/washroom-accessories/washroom-accessories-catalog/product/b-544-and-b-5446/>



00 | INDEX

01 | OPENINGS

02 | FINISH

03 | FF & E

04 | PLUMBING

05 | LIGHTING

06 | MISC.

**WATER HEATER | 20 GALLON GAS CAPACITY  
AO Smith | DEL-20**

21-3/4"DIAMETER X 22-1/4"H

<https://www.hotwater.com/support/DEL-20/#sts=Product%20Support%20%E2%0DEL-20>



**DRINKING FOUNTAIN**  
**Elkay | VRCTLRSCDDSC**

36-5/16"L X 18-5/8"W X 27-1/8"H

<https://www.bobrick.com/products/washroom-accessories/washroom-accessories-catalog/product/b-544-and-b-5446/>



## INSTANT WATER HEATER Chronomite | SR-20L

Tankless electric | 9-5/8"L X 2-3/4"W X 6-1/4"H

<https://www.chronomite.com/product.aspx?ProductId=3#/product-section-specs>



**HOSE BIBB | WALL MOUNTED**  
**Chicago Faucets | 387-E27CP**

Polished Chrome | 2-1/4" tee handle | 3/4" NPT female thread inlet  
Weight: 2 lb | Package Dimensions: 6.5" x 4.5" x 5.12"

<https://www.chicagofaucets.com/products/fittings/washdown-sill/387-E27CP>



UNDERSINK PIPING COVERS | WHITE  
TRUEBRO | 102EZ

LAV GUARD 2

<https://ipscorp.com/plumbing/brands/truebro/lav-guard-2/>

00 | INDEX

01 | OPENINGS

02 | FINISH

03 | FF & E

04 | PLUMBING

05 | LIGHTING

06 | MISC.



00 | INDEX

01 | OPENINGS

02 | FINISH

03 | FF & E

04 | PLUMBING

05 | LIGHTING

06 | MISC.

MIRROR | VERTICAL | WALL MOUNTED  
Porcelanosa | N806060957- 100042618

Smart line | Beveled edge | 31-1/2" X 19-11/16" X 13/6"

<https://www.porcelanosa-usa.com/products/smart-line-mirror-21545>





SINK | WALL MOUNTED  
Procelanosa | 100090018-N377001040

<https://www.porcelanosa-usa.com/products/city-wall-mount-sink.html>

# P150

AUTOMATIC FAUCET | POLISHED CHROME



00 | INDEX

01 | OPENINGS

02 | FINISH

03 | FF & E

04 | PLUMBING

05 | LIGHTING

06 | MISC.

AUTOMATIC FAUCET | POLISHED CHROME  
American Standard | 250B.102.002

<https://www.americanstandard-us.com/bathroom/commercial-faucets/25/0b/moments-selectronic-proximity-faucet-base-model-15-gpm-28767?variant=polished-chrome>



POWER KIT - PLUG-IN AC | MOUNTED UNDER SINK  
American Standard | PK00PAC.000

<https://www.americanstandard-us.com/bathroom/commercial-faucets/pk/00/power-kit-plug-in-ac-26756?variant=n%2Fa>



00 | INDEX

01 | OPENINGS

02 | FINISH

03 | FF & E

04 | PLUMBING

05 | LIGHTING

06 | MISC.

**AUTOMATIC WALL-MOUNTED LIQUID SOAP DISPENSER 850 ML (30-FL OZ)**  
**Bobrick | B2012**

Satin Stainless Steel | 4"W x 4"D x 10-1/2"H

[https://www.bobrick.com/wp-content/uploads/B-2012\\_td.pdf](https://www.bobrick.com/wp-content/uploads/B-2012_td.pdf)



**SOAP FOAM DISPENSER**  
**Bobrick | B2013**

Satin Stainless Steel | 4-1/4"W x 10-17/32"H x 4-7/32"D | 4-7/32" projection

[https://www.bobrick.com/wp-content/uploads/B-2013\\_td.pdf](https://www.bobrick.com/wp-content/uploads/B-2013_td.pdf)



**STAND FOR SOAP DISPENSER | USE FOR F152 & F153**  
**Bobrick | B2000**

Satin Stainless Steel | 16"W x 62-1/8"H x 16"D | 1-1/2"DIAMETER Tube

[https://www.bobrick.com/wp-content/uploads/B-2000\\_td.pdf](https://www.bobrick.com/wp-content/uploads/B-2000_td.pdf)

00 | INDEX

01 | OPENINGS

02 | FINISH

03 | FF & E

04 | PLUMBING

05 | LIGHTING

06 | MISC.



00 | INDEX

01 | OPENINGS

02 | FINISH

03 | FF &amp; E

04 | PLUMBING

05 | LIGHTING

06 | MISC.

**SURFACE-MOUNTED PAPER TOWEL DISPENSER AND WASTE RECEPTACLE**  
**Bobrick | B380349**

Trimline | Satin Stainless Steel | 13"W x 55-1/8"H x 4-5/8"D | 4-5/8" projection

Paper towel C fold and multifold towels | Receptacle 3.8-gal\* (14.4-L)

[https://www.bobrick.com/wp-content/uploads/B-380349\\_td.pdf](https://www.bobrick.com/wp-content/uploads/B-380349_td.pdf)



00 | INDEX

01 | OPENINGS

02 | FINISH

03 | FF &amp; E

04 | PLUMBING

05 | LIGHTING

06 | MISC.

**SEMI-RECESSED PAPER TOWEL DISPENSER AND WASTE RECEPTACLE**  
**Bobrick | B38032**

Trimline | Satin Stainless Steel | 13"W x 55-1/8"H x 6"D | 2-9/16" projection  
 Rough wall opening: 11-1/2"W x 53-5/8"H x 3-3/4"MIN D | For 3-5/8" stud wall

Paper towel 600 C-fold, 800 multifold or 1100 single fold towels | Receptacle 6.3-gal. (24-L)

<https://www.americanstandard-us.com/bathroom/commercial-faucets/pk/00/power-kit-plug-in-ac-26756?variant=n%2Fa>





00 | INDEX

01 | OPENINGS

02 | FINISH

03 | FF &amp; E

04 | PLUMBING

05 | LIGHTING

06 | MISC.

**SURFACE-MOUNTED CONVERTIBLE PAPER TOWEL DISPENSER AND WASTE RECEPTACLE**  
**Bobrick | B3949**

Classic | Satin Stainless Steel | 17-1/2"W x 56-5/16"H x 8-1/4"D | 8-1/4" projection

Paper towel 600 C-fold or 800 multifold towels | Receptacle 12\*-gal. (45.5-L)

[https://www.bobrick.com/wp-content/uploads/B-3949\\_td.pdf](https://www.bobrick.com/wp-content/uploads/B-3949_td.pdf)



00 | INDEX

01 | OPENINGS

02 | FINISH

03 | FF &amp; E

04 | PLUMBING

05 | LIGHTING

06 | MISC.

**RECESSED CONVERTIBLE PAPER TOWEL DISPENSER AND WASTE RECEPTACLE**  
**Bobrick | B3940**

Classic | Satin Stainless Steel | 17-3/16"W x 56"H x 4-3/16"D | 3/16" projection  
 Rough wall opening: 16"W x 53-3/4"H x 4"MIN D | For 3-5/8" stud wall

Paper towel 600 C-fold or 800 multifold towels | Receptacle 6\*-gal. (22.7-L)

[https://www.bobrick.com/wp-content/uploads/B-3940\\_td.pdf](https://www.bobrick.com/wp-content/uploads/B-3940_td.pdf)



**RECESSED TOILET-SEAT-COVER DISPENSER**  
**Bobrick | B3013**

Trimline | Satin Stainless Steel | 17-9/16"W x 13-1/16"H x 15-1/2"D  
 Rough wall opening: 15-7/8"W x 11-7/16"H x 2-3/4"MIN D (405 x 290 x 70mm)  
 For 3-5/8" stud wall

Flush lock | Door has 90° return, conceals flange | Dispenses 500 toilet seat covers.

[https://www.bobrick.com/wp-content/uploads/B-3013\\_td.pdf](https://www.bobrick.com/wp-content/uploads/B-3013_td.pdf)

00 | INDEX

01 | OPENINGS

02 | FINISH

03 | FF &amp; E

04 | PLUMBING

05 | LIGHTING

06 | MISC.



00 | INDEX

01 | OPENINGS

02 | FINISH

03 | FF &amp; E

04 | PLUMBING

05 | LIGHTING

06 | MISC.

**RECESSED TOILET-SEAT-COVER DISPENSER**  
**Bobrick | B301**

Classic | Satin Stainless Steel | 12-3/4"W x 17-3/16"H x 2-3/4"D | 3/16" projection  
 Rough wall opening: 15-5/8"W x 11-1/4"H x 4"MIN D (395 x 285 x 67mm)  
 For 3-5/8" stud wall

[https://www.bobrick.com/wp-content/uploads/B-301\\_td.pdf](https://www.bobrick.com/wp-content/uploads/B-301_td.pdf)



00 | INDEX

01 | OPENINGS

02 | FINISH

03 | FF &amp; E

04 | PLUMBING

05 | LIGHTING

06 | MISC.

**PARTITION-MOUNTED SANITARY NAPKIN DISPOSAL (SERVES TWO TOILET COMPARTMENTS)**  
**Bobrick | B354**

Trimline | Satin Stainless Steel | 12-3/4"W x 17-3/16"H x 4-1/16"D  
 Rough wall opening: 11"W x 15-1/2"H x 1/2" to 1-1/4"D

Plastic receptacle 1/2-gal. (4.6-L) | Two sided through 1/2" to 1-1/4" partition

[https://www.bobrick.com/wp-content/uploads/B-354\\_td.pdf](https://www.bobrick.com/wp-content/uploads/B-354_td.pdf)



00 | INDEX

01 | OPENINGS

02 | FINISH

03 | FF & E

04 | PLUMBING

05 | LIGHTING

06 | MISC.

## **SURFACE-MOUNTED SANITARY NAPKIN DISPOSAL** **Bobrick | B35139**

Trimline | Satin Stainless Steel | 8-1/16"W x 14-1/8"H x 4-7/8"D | 4-7/8" projection

Plastic receptacle 0.6-gal (2.3-L)

[https://www.bobrick.com/wp-content/uploads/B-35139\\_td.pdf](https://www.bobrick.com/wp-content/uploads/B-35139_td.pdf)



## RECESSED SANITARY NAPKIN DISPOSAL Bobrick | B35303

Trimline | Satin Stainless Steel | 13"W x 18-15/16"H x 4-3/16"D | 9/16" projection  
Rough wall opening: 11-1/2"W x 17-1/4"H x 3-3/4"D (290 x 440 x 95mm)  
For 3-5/8" stud

Plastic receptacle 1/2-gal. (4.6-L)

[https://www.bobrick.com/wp-content/uploads/B-35303\\_td.pdf](https://www.bobrick.com/wp-content/uploads/B-35303_td.pdf)



00 | INDEX

01 | OPENINGS

02 | FINISH

03 | FF &amp; E

04 | PLUMBING

05 | LIGHTING

06 | MISC.

**SURFACE-MOUNTED SANITARY NAPKIN DISPOSAL**  
**Bobrick | B254**

Classic | Satin Stainless Steel | 10-11/16"W x 15-1/8"H x 4-1/16"D | 4-1/16" projection

Plastic receptacle 1/2 gal. (4.6-L)

[https://www.bobrick.com/wp-content/uploads/B-254\\_td.pdf](https://www.bobrick.com/wp-content/uploads/B-254_td.pdf)





00 | INDEX

01 | OPENINGS

02 | FINISH

03 | FF & E

04 | PLUMBING

05 | LIGHTING

06 | MISC.

## RECESSED SANITARY NAPKIN DISPOSAL Bobrick | B353

Classic | Satin Stainless Steel | 12-3/4"W x 17-3/16"H x 4-1/16"D | 1/8" projection  
Rough wall opening: 11-1/4"W x 15-5/8"H x 4"D (285 x 395 x 102mm)  
For 3-5/8" stud

Plastic receptacle 1/2-gal. (4.6-L)

[https://www.bobrick.com/wp-content/uploads/B-353\\_td.pdf](https://www.bobrick.com/wp-content/uploads/B-353_td.pdf)



00 | INDEX

01 | OPENINGS

02 | FINISH

03 | FF &amp; E

04 | PLUMBING

05 | LIGHTING

06 | MISC.

**ELKAY EZH2O BOTTLE FILLING STATION | BI-LEVEL ADA COOLER  
HANDS FREE ACTIVATION | FILTERED REFRIGERATED | LIGHT GRAY  
Elkay | LZOTL8WSLK**

19"W x 39-1/16"H x 36-3/4"D

Power: 115V/60Hz | Wall Mount | Indoor installation | 104 lbs

<https://www.elkay.com/products/lzotl8wslk.html>

# LIGHTING

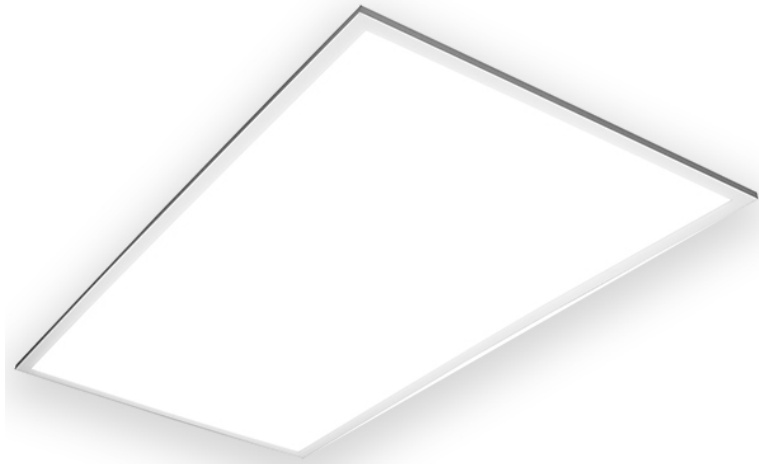
<b>01</b>   OPENINGS
<b>02</b>   FINISH
<b>03</b>   FF & E
<b>04</b>   PLUMBING
<b>05</b>   LIGHTING
<b>06</b>   MISC.

TAG	DESCRIPTION	MANUFACTURER	PRODUCT ID	MOUNTING	FINISH	FINISH CODE	DESCRIPTION
<a href="#">L101</a>	2X4 LED Flat Panel	TCP	FP4UZD4635K	Ceiling	N/A	N/A	46 Watts and 5200 Lumens
<a href="#">L102</a>	2X4 LED Flat Panel with Emergency Battery	TCP	FP4UZD4635K-EB	Ceiling	N/A	N/A	46 Watts and 5200 Lumens
<a href="#">L103</a>	2x2 LED Flat Panel	TCP	FP2UZDB3635K	Ceiling	N/A	N/A	29 Watts and 3200 Lumens
<a href="#">L104</a>	2X2 LED Flat Panel with Emergency Battery	TCP	FP2UZDB3635K-EB	Ceiling	N/A	N/A	29 Watts and 3200 Lumens
<a href="#">L111</a>	Highbay LED	TCP	HB15000150-SO20'/MH	Ceiling	N/A	N/A	150 Watts and 18500 Lumens
<a href="#">L112</a>	Highbay LED with Emergency Battery	TCP	HB15000150-B-SO20'/MH	Ceiling	N/A	N/A	150 Watts and 18500 Lumens
<a href="#">L121</a>	Highbay LED	TCP	HB10500150-SO20'/MH	Ceiling	N/A	N/A	105 Watts and 13500 Lumens
<a href="#">L122</a>	Highbay LED with Emergency Battery	TCP	HB10500150-B-SO20'/MH	Ceiling	N/A	N/A	105 Watts and 13500 Lumens
<a href="#">L131</a>	Highbay LED	TCP	HB21000150	Ceiling	N/A	N/A	210 Watts and 27000 Lumens
<a href="#">L132</a>	Highbay LED with Emergency Battery	TCP	HB21000150-EB	Ceiling	N/A	N/A	210 Watts and 27000 Lumens
<a href="#">L133</a>	Highbay LED	Plus	WHB-162/850	Ceiling	N/A	N/A	162 Watts and 21060 Lumens
<a href="#">L134</a>	Highbay Linear Vaportight	Brilliant	VWFHBLD150DM-VCL50EM	Ceiling	N/A	N/A	150 Watts and 21060 Lumens
<a href="#">L141</a>	Specfit 6"	Green Creative	LEM9035DI-M010UNVMD	Ceiling	N/A	N/A	25 Watts and 2000 Lumens
<a href="#">L142</a>	Specfit 6" with Emergency Battery	Green Creative	LEM9035DI-M010UNVMDEM	Ceiling	N/A	N/A	25 Watts and 2000 Lumens
<a href="#">L151</a>	4" LED Strip	TCP	GPS4UZ-DA8035K-LS1	Ceiling	N/A	N/A	32 Watts and 4200 Lumens
<a href="#">L152</a>	4" LED Strip with Emergency Battery	TCP	GPS4UZDA-8035KEB-LS1	Ceiling	N/A	N/A	32 Watts and 4200 Lumens
<a href="#">L153</a>	4" LED Strip	TCP	GPS4UZDA8035K	Ceiling	N/A	N/A	32 Watts and 4200 Lumens
<a href="#">L154</a>	4" LED Strip with Emergency Battery	TCP	GPS4UZDA-8035KEB	Ceiling	N/A	N/A	32 Watts and 4200 Lumens
<a href="#">L161</a>	LED Lightplane 5	ALW	LP5SD-S19-HI-90-3500K-0/10V/S-EXT/F-N-N-N-TB-UNV	Suspended	N/A	N/A	9.1 Watts/ft and 1050 Lumens/ft
<a href="#">L162</a>	LED Lightplane 9	ALW	LP9S-S19-DL2600-90-3500K-40-N-19-0/10V/S-N-N-TB-UNV	Suspended	N/A	N/A	19.8 Watts/ft and 2600 Lumens/ft
<a href="#">L163</a>	LED Lightplane 3.5	ALW	LP3.5SD-S19-HI-90-3500K-0/10V/S-EXT/F-N-N-N-TB-UNV	Suspended	N/A	N/A	9.1 Watts/ft and 1050 Lumens/ft
<a href="#">L164</a>	LED Lightplane 4	ALW	SP4S-S19-SP4S-S19-HI/90/3500-0/10V/S-CR/S-N-N-N-N-N-TBD-UNV	Suspended	N/A	N/A	7.3 Watts/ft and 1000 Lumens/ft
<a href="#">L171</a>	Canopy LED	Brilliant	BLG23U5K	Canopy	N/A	N/A	23 Watts and 3270 Lumens
<a href="#">L172</a>	Canopy LED	Brilliant	BLG45U5K	Canopy	N/A	N/A	45 Watts and 6267 Lumens
<a href="#">L173</a>	Semi-Hooded Cutoff	Brilliant	GP26L41X37UN-V40CGBZ	Wall	N/A	N/A	37 Watts and 4584 Lumens
<a href="#">L174</a>	Semi-Hooded Cutoff with Emergency Battery	Brilliant	GP26L41X37UN-V40CGBZBU	Wall	N/A	N/A	37 Watts and 4584 Lumens
<a href="#">L175</a>	Semi-Hooded Cutoff	Brilliant	GPL26L41X58UN-V401CGBZ	Wall	N/A	N/A	58 Watts and 7034 Lumens

TAG	DESCRIPTION	MANUFACTURER	PRODUCT ID	MOUNTING	FINISH	FINISH CODE	DESCRIPTION
<a href="#">L181</a>	Recessed Downlight	Solais	PH4ncPXm25C35K-1600WHTR010	Ceiling	N/A	N/A	24 Watts and 1600 Lumens
<a href="#">L182</a>	Recessed Downlight	Solais	PH4ncPXm25C35K-1600WHWH010	Ceiling	N/A	N/A	24 Watts and 1600 Lumens
<a href="#">L191</a>	Exit Sign	Brilliant	TPZTEU1REM	Ceiling	N/A	N/A	Single face thin die-cast aluminum exit sign red with battery backup
<a href="#">L192</a>	Exit Sign	Brilliant	TPZTEU2REM	Ceiling	N/A	N/A	Double face thin die-cast aluminum exit sign red with battery backup
<a href="#">L193</a>	Exit Sign	Brilliant	EGSU2RCMWEM	Ceiling	N/A	N/A	Pendant mount double face edgelit exit red with battery backup
<a href="#">L194</a>	Exit Sign	Brilliant	TPU-2-R-W-EM	Ceiling	N/A	N/A	Thermoplastic Exit sign battery backup
<a href="#">L195</a>	Emergency Light	Best	RMR-16-B-PLED	Ceiling	N/A	N/A	Twin head emergency light with battery back up and self-diagnostics in black
<a href="#">L196</a>	Emergency Light	Barron	NF5-WB-10L-MTM-BA-G2	Mullion	N/A	N/A	Nightfall EM egress 10 watt led mul mount
<a href="#">L201</a>	LED Track Head	Contech	CTL-193-H-4C-D-B	Ceiling	N/A	N/A	35 Watts and 3500 Lumens
<a href="#">L202</a>	Black Track	Contech	LT-8-B	Ceiling	N/A	N/A	Cable Track
<a href="#">L203</a>	Suspension kit with 180", cable, 15'	Contech	LAC-180	Ceiling	N/A	N/A	Please refer Cut Sheet
<a href="#">L204</a>	Mini Connector	Contech	LA-2-B	Ceiling	N/A	N/A	Please refer Cut Sheet
<a href="#">L205</a>	End feed	Contech	LA-10-B	Ceiling	N/A	N/A	Please refer Cut Sheet
<a href="#">L206</a>	DL360-6" Round Surface Mount downlight 2600LM	Liton	DL360W-L26-B20-UE-DUN-T35	Ceiling	N/A	N/A	30 Watts and 2600 Lumens
<a href="#">L207</a>	Flat Surface Mount Kit	TCP	FPSK2(2X2), FPSK4(2X4)	Ceiling	N/A	N/A	Please refer Cut Sheet

# L101

2X4 LED PANEL | 46 WATTS | 5200LUMENS



2X4 LED PANEL  
TCP | FP4UZD4635K | LED | 46 Watts | 5200 Lumens

<https://www.tcpi.com/?s=FP4UZD4635K>

00 | INDEX

01 | OPENINGS

02 | FINISH

03 | FF & E

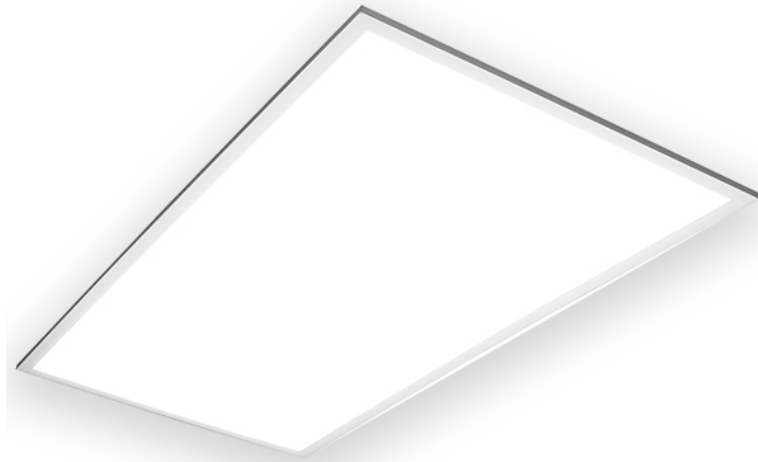
04 | PLUMBING

05 | LIGHTING

06 | MISC.

# L102

2X4 LED PANEL | 46 WATTS | 5200 LUMENS | EMERGENCY BACKUP



00 | INDEX

01 | OPENINGS

02 | FINISH

03 | FF & E

04 | PLUMBING

05 | LIGHTING

06 | MISC.

2X4 LED PANEL  
TCP | FP4UZD4635K-EB | 90 Min Emergency | LED | 46 Watt | 5200 Lumens

# L103

2X2 LED PANEL | 29 WATTS | 3200LUMENS



00 | INDEX

01 | OPENINGS

02 | FINISH

03 | FF & E

04 | PLUMBING

05 | LIGHTING

06 | MISC.

LED PANEL  
TCP | FP2UZDB3635K | LED | 29 Watts | 3200 Lumens



# L104

2X2 LED PANEL | 29 WATTS | 3200 LUMENS | EMERGENCY BACKUP



00 | INDEX

01 | OPENINGS

02 | FINISH

03 | FF & E

04 | PLUMBING

05 | LIGHTING

06 | MISC.

## LED PANEL

TCP | FP2UZDB3635K-EB | LED | 90 min Emergency Battery Backup | 29 Watts | 3200 Lumens



00 | INDEX

01 | OPENINGS

02 | FINISH

03 | FF & E

04 | PLUMBING

05 | LIGHTING

06 | MISC.

HIGHBAY LED  
TCP | HB15000150-SO20'/MH | LED | 150 Watts | 18500 Lumens



00 | INDEX

01 | OPENINGS

02 | FINISH

03 | FF & E

04 | PLUMBING

05 | LIGHTING

06 | MISC.

HIGHBAY LED  
TCP | HB15000150-B-SO20'/MH | LED | 90 min Emergency Battery Backup  
| 150 Watts | 18500 Lumens

# L121

HIGHBAY LED | 105 WATTS | 13500 LUMENS



00 | INDEX

01 | OPENINGS

02 | FINISH

03 | FF & E

04 | PLUMBING

05 | LIGHTING

06 | MISC.

HIGHBAY LED  
TCP | HB10500150-SO20'/MH | LED | 105 Watts | 13500 Lumens



00 | INDEX

01 | OPENINGS

02 | FINISH

03 | FF & E

04 | PLUMBING

05 | LIGHTING

06 | MISC.

HIGHBAY LED  
TCP | HB15000150-B-SO20'/MH | LED | 90 min Emergency Battery Backup  
| 105 Watts | 13500 Lumens

# L131

HIGHBAY LED | 210 WATTS | 27000 LUMENS



00 | INDEX

01 | OPENINGS

02 | FINISH

03 | FF & E

04 | PLUMBING

05 | LIGHTING

06 | MISC.

HIGHBAY LED  
TCP | HB10500150-SO20'/MH | LED | 210 Watts | 27000 Lumens



00 | INDEX

01 | OPENINGS

02 | FINISH

03 | FF & E

04 | PLUMBING

05 | LIGHTING

06 | MISC.

HIGHBAY LED  
TCP | HB10500150-SO20'/MH | LED | 90 min Emergency Battery Backup | 210 Watts |  
27000 Lumens

# L133

HIGHBAY LINEAR LED | 162 WATTS | 21060 LUMENS



HIGHBAY LINEAR LED  
PLUS | WHB-162/850 | LED | 162 Watts | 21060 Lumens

00 | INDEX

01 | OPENINGS

02 | FINISH

03 | FF & E

04 | PLUMBING

05 | LIGHTING

06 | MISC.





00 | INDEX

01 | OPENINGS

02 | FINISH

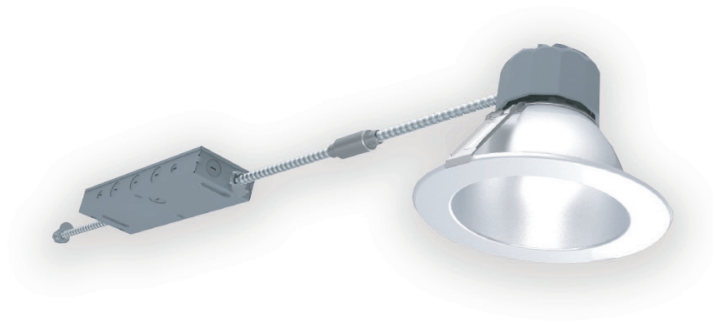
03 | FF & E

04 | PLUMBING

05 | LIGHTING

06 | MISC.

HIGHBAY LINEAR VAPORTIGHT LED  
Brilliant | VWFHBLED150DMVCL50EM | Vaportight LED | 150 Watts | 21060 Lumens



**SPECFIT 6"**  
**Green Creative | LEM9035DIM010UNVMD | 25 Watts | 2000 Lumens**

00 | INDEX

01 | OPENINGS

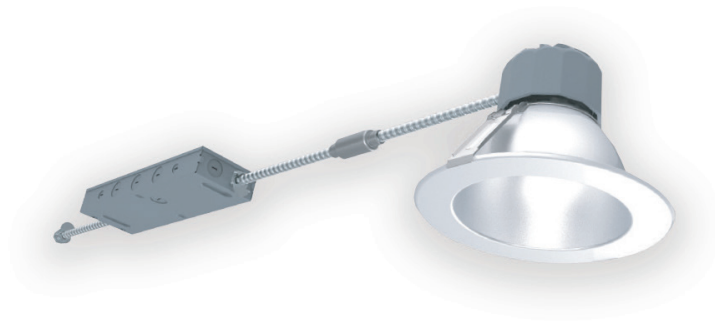
02 | FINISH

03 | FF & E

04 | PLUMBING

05 | LIGHTING

06 | MISC.



00 | INDEX

01 | OPENINGS

02 | FINISH

03 | FF & E

04 | PLUMBING

05 | LIGHTING

06 | MISC.

**SPECFIT 6"**  
**Green Creative | LEM9035DIM010UNVMDEM | 90 min Emergency Battery Backup | 25**  
**Watts | 2000 Lumens**

# L151

4' LED STRIP | MOTION SENSOR | 32 WATTS | 4200 LUMENS



4' LED STRIP | MOTION SENSOR  
TCP | GPS4UZDA8035K-LS1 | 32 Watts | 4200 Lumens

00 | INDEX

01 | OPENINGS

02 | FINISH

03 | FF & E

04 | PLUMBING

05 | LIGHTING

06 | MISC.



00 | INDEX

01 | OPENINGS

02 | FINISH

03 | FF & E

04 | PLUMBING

05 | LIGHTING

06 | MISC.

4' LED STRIP | MOTION SENSOR  
TCP | GPS4UZDA8035KEB-LS1 | 90 min Emergency Battery Backup | 32 Watts | 4200  
Lumens

# L153

4' LED STRIP | 32 WATTS | 4200 LUMENS



4' LED STRIP  
TCP | GPS4UZDA8035K | 32 Watts | 4200 Lumens

00 | INDEX

01 | OPENINGS

02 | FINISH

03 | FF & E

04 | PLUMBING

05 | LIGHTING

06 | MISC.



00 | INDEX

01 | OPENINGS

02 | FINISH

03 | FF & E

04 | PLUMBING

05 | LIGHTING

06 | MISC.

4' LED STRIP  
TCP | GPS4UZDA8035KEB | 90 min Emergency Battery Backup | 32 Watts | 4200  
Lumens

# L161

LED LIGHTPLANE 5 | 9.1 WATTS/FT | 1050 LUMENS/FT



00 | INDEX

01 | OPENINGS

02 | FINISH

03 | FF & E

04 | PLUMBING

05 | LIGHTING

06 | MISC.

LED LIGHTPLANE 5  
ALW | LP5SD-S19-HI-90-3500K-O/10V/S-EXT/F-N-N-N-TB-UNV | 9.1 Watts/FT | 1050  
Lumens/FT





00 | INDEX

01 | OPENINGS

02 | FINISH

03 | FF & E

04 | PLUMBING

05 | LIGHTING

06 | MISC.

LED LIGHTPLANE 9  
ALW | LP9S-S19-DL2600-90-3500K-40-N-19-0/10V/S-N-N-TB-UNV | 19.8 Watts/FT |  
2600 Lumens



00 | INDEX

01 | OPENINGS

02 | FINISH

03 | FF & E

04 | PLUMBING

05 | LIGHTING

06 | MISC.

## LED LIGHTPLANE 3.5

ALW | LP3.55SD-S19-HI-90-3500K-0/10V/S-EXT/F-N-N-N-TB-UNV | 9.1 Watts/FT | 1050 Lumens/FT

# L164

LED SUPERPLANE 4 | 7.3 WATTS/FT | 1000 LUMENS/FT



00 | INDEX

01 | OPENINGS

02 | FINISH

03 | FF & E

04 | PLUMBING

05 | LIGHTING

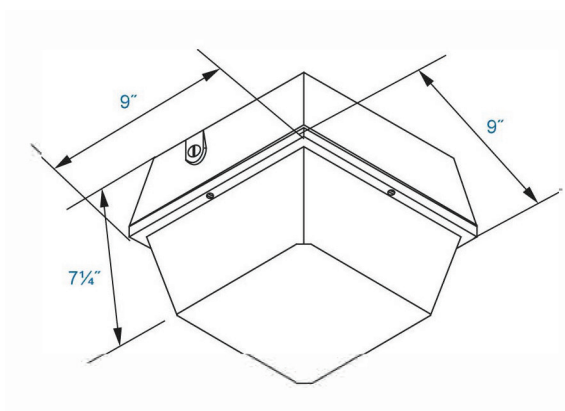
06 | MISC.

## LED SUPERPLANE

ALW | SP4S-S19-SP4S-S19-HI/90/3500-0/10V/S-CR/S-N-N-N-N-N-N-TBD-UNV| 7.3  
Watts/FT | 1000 Lumens/FT

# L171

LED | CANOPY | 23 WATTS | 3270 LUMENS



LED | CANOPY  
BRILLIANT | BLG23U5K | 23 Watts | 3270 Lumens

00 | INDEX

01 | OPENINGS

02 | FINISH

03 | FF & E

04 | PLUMBING

05 | LIGHTING

06 | MISC.

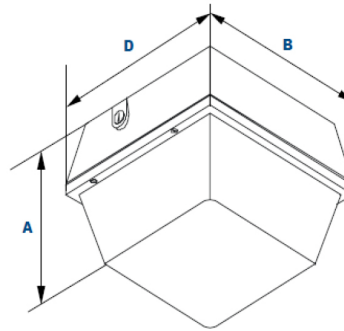
# L172

LED | CANOPY | 45 WATTS | 6267 LUMENS



## Dimensions

Width (D)	12 $\frac{3}{8}$ " (314mm)
Length (B)	12 $\frac{3}{8}$ " (314mm)
Height (A)	8 $\frac{5}{8}$ " (219mm)



LED | CANOPY  
BRILLIANT | BLG45U5K | 45 Watts | 6267 Lumens

00 | INDEX

01 | OPENINGS

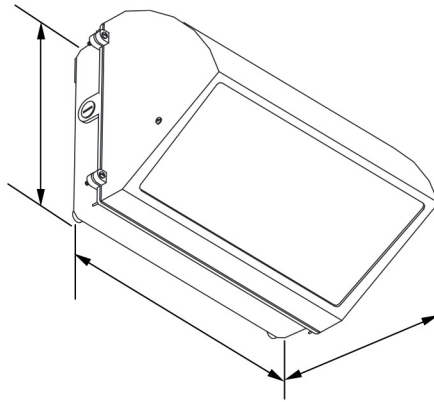
02 | FINISH

03 | FF & E

04 | PLUMBING

05 | LIGHTING

06 | MISC.



00 | INDEX

01 | OPENINGS

02 | FINISH

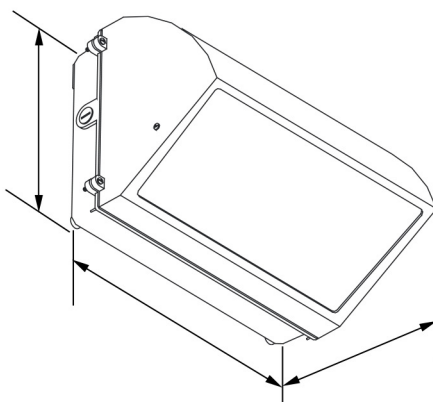
03 | FF & E

04 | PLUMBING

05 | LIGHTING

06 | MISC.

HOODED SEMI-CUTOFF | MEDIUM WALL PACK  
BRILLIANT | GP26L41X37UNV40CGBZ | 37 Watts | 4584 Lumens



00 | INDEX

01 | OPENINGS

02 | FINISH

03 | FF & E

04 | PLUMBING

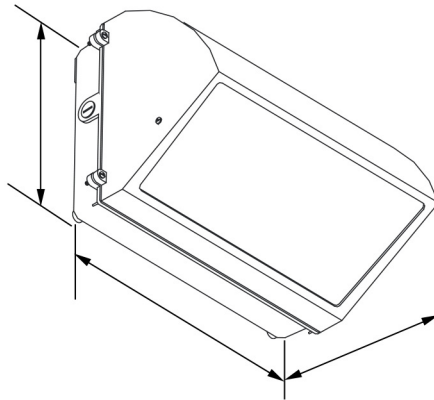
05 | LIGHTING

06 | MISC.

HOODED SEMI-CUTOFF | MEDIUM WALL PACK  
BRILLIANT | GP26L41X37UNV40CGBZBU | 37 Watts | Emergency Battery Backup | 4584  
Lumens

# L175

HOODED SEMI-CUTOFF | MEDIUM WALL PACK | 58 WATTS | 7034 LUMENS



00 | INDEX

01 | OPENINGS

02 | FINISH

03 | FF & E

04 | PLUMBING

05 | LIGHTING

06 | MISC.

HOODED SEMI-CUTOFF | MEDIUM WALL PACK  
BRILLIANT | GPL26L41X58UNV401CGBZ | 58 Watts | 7034 Lumens





00 | INDEX

01 | OPENINGS

02 | FINISH

03 | FF & E

04 | PLUMBING

05 | LIGHTING

06 | MISC.

4" ROUND | RECESSED DOWNLIGHT  
SOLAIS | PH4ncPXm25C35K1600WHTR010 | Trim Finish - White cone | 24 Watts | 1600 Lumens



00 | INDEX

01 | OPENINGS

02 | FINISH

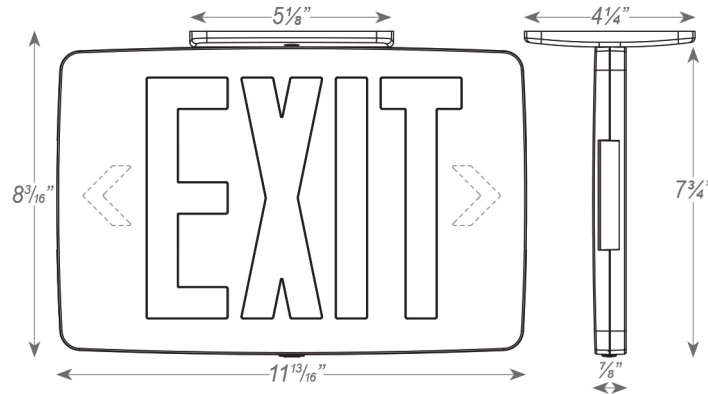
03 | FF & E

04 | PLUMBING

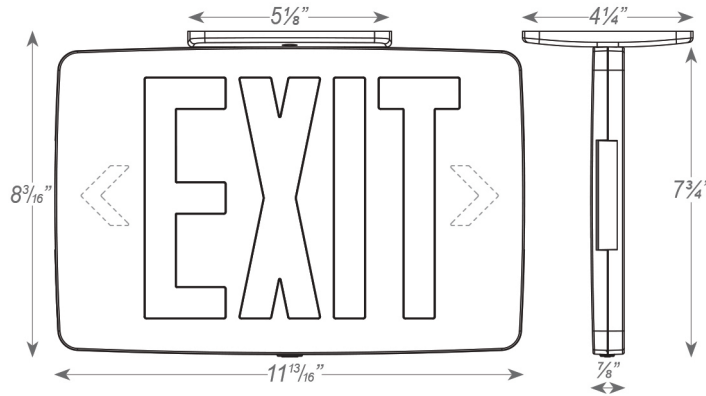
05 | LIGHTING

06 | MISC.

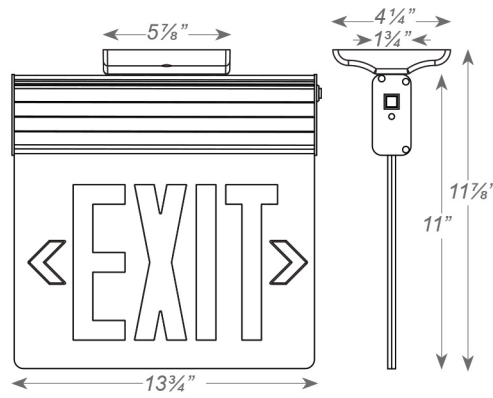
4" ROUND | RECESSED DOWNLIGHT  
SOLAIS | PH4ncPXm25C35K1600WHWH010 | Trim Finish - White cone | 24 Watts | 1600 Lumens



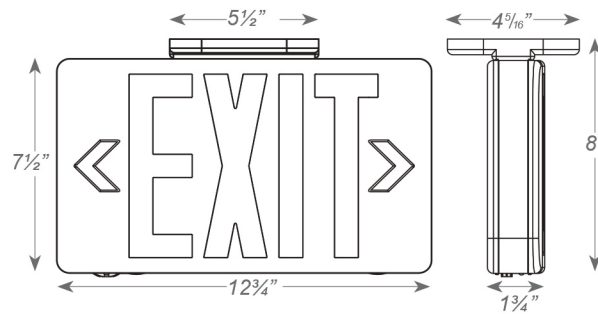
EXIT SIGN RED | SINGLE FACE  
BRILLIANT | TPZTEU1REM | Battery Backup



EXIT SIGN RED | DOUBLE FACE  
BRILLIANT | TPZTEU2REM | Battery Backup



PENDANT MOUNT | DOUBLE FACE  
BRILLIANT | EGSU2RCMWEM | Battery Backup



THERMOPLASTIC | DOUBLE FACE  
BRILLIANT | TPU-2-R-W-EM | 3.8 Watts|Battery Backup

00 | INDEX

01 | OPENINGS

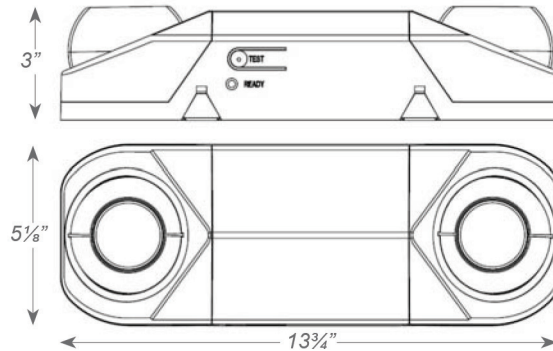
02 | FINISH

03 | FF & E

04 | PLUMBING

05 | LIGHTING

06 | MISC.



EMERGENCY LIGHT | TWIN HEAD  
BEST | RMR-16-B-PLED | 10 Watts | 580 Lumens | Battery Backup

00 | INDEX

01 | OPENINGS

02 | FINISH

03 | FF & E

04 | PLUMBING

05 | LIGHTING

06 | MISC.



NIGHTFALL EMERGENCY LIGHT | MULLION MOUNT  
BARRON | NF5-WB-10L-MTM-BA-G2 | 10 Watts

00 | INDEX

01 | OPENINGS

02 | FINISH

03 | FF & E

04 | PLUMBING

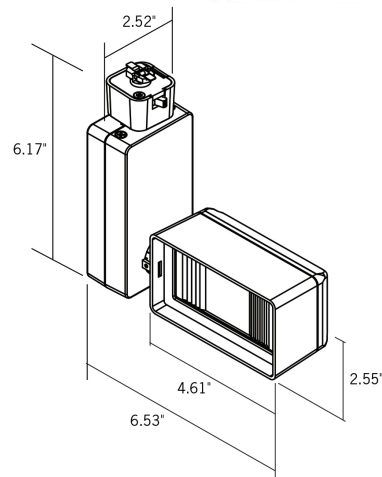
05 | LIGHTING

06 | MISC.



# L201

SINGLE CIRCUIT LINE | TRACK HEAD | 35 WATTS | 3500 LUMENS



SINGLE CIRCUIT LINE | TRACK HEAD  
CONTECH | CTL-193-H-4C-D-B | 35 Watts | 3500 Lumens

00 | INDEX

01 | OPENINGS

02 | FINISH

03 | FF & E

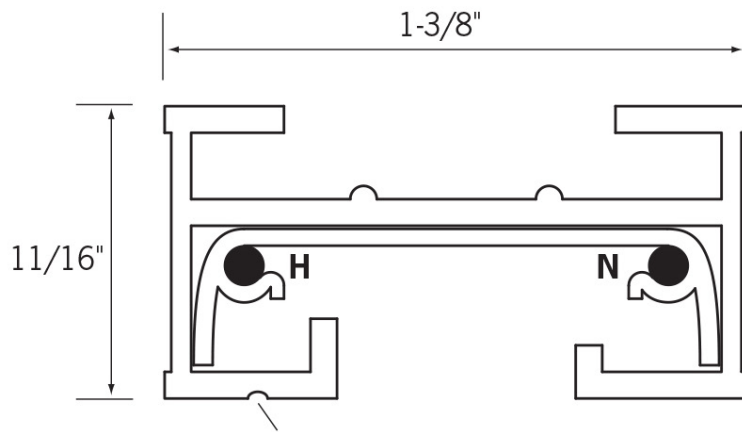
04 | PLUMBING

05 | LIGHTING

06 | MISC.

# L202

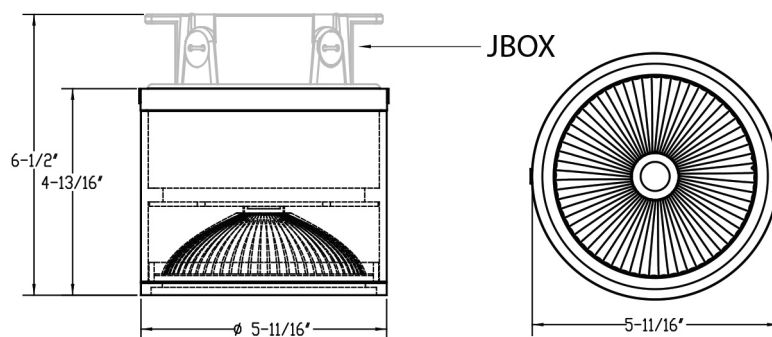
8' TRACK BLACK



8' TRACK BLACK  
CONTECH | LT-8-B

# L206

ROUND SURFACE | DOWNLIGHT | 30 WATTS | 2600 LUMENS



ROUND SURFACE | DOWNLIGHT  
LITON |DL360W-L26-B20-UE-DUN-T35| 30 Watts | 2600 Lumens



FLAT SURFACE MOUNT KITS  
TPC | FPSK2(2X2) FPSK4(2X4)