

Software And Licensing

Software and Version Proposed : Avigilon Control Center™ 7 Software - Enterprise Version

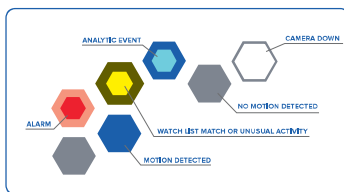
Software License: ACC7 - ENT - ACC7 enterprise edition camera channel license

The proposed ACC7 enterprise edition camera channel license is a one time License; If smart maintenance plan is required, please refer below table.

Part. No.	Description	Price
ACC-ENT-SMART-1 YR	ACC Enterprise Smart Plan (For 1-Year)	\$32.10
ACC-ENT-SMART-3 YR	ACC Enterprise Smart Plan (For 3-Year)	\$77.10
ACC-ENT-SMART-5 YR	ACC Enterprise Smart Plan (For 5-Year)	\$120.00

Avigilon Control Center™ 7 Software

Avigilon Control Center (ACC) software is an easy-to-use video management software that is designed to optimize the way security professionals manage and interact with high-definition video. It efficiently captures and stores HD video, while intelligently managing bandwidth and storage using our patented High Definition Stream Management (HDSM) technology. Version 7 of the software introduces an entirely new way to monitor live video through its Focus of Attention interface, enabling operators to see at a glance what is happening across the entire site and more effectively triage and respond to the most important events.



Focus of Attention Interface

Redefining live video monitoring, Focus of Attention helps increase operator effectiveness by providing an overview of events across all cameras in the site, including Avigilon analytic events, face and license plate watch list matches, Unusual Activity Detection (UAD) events, Unusual Motion Detection (UMD) events, motion events, and alarms. Operators can triage the most important events, reviewing associated video to determine if a response is required.



Facial Recognition Technology

Accelerate response times using AI-powered facial recognition technology to detect people of interest based on secure watch lists managed by authorized users at the organization. Populate watch lists by uploading an image or finding a face from recorded video. Robust controls govern the accessibility and retention of watch list data. Start an Avigilon Appearance Search™ query for watch list entries, or receive alerts for potential watch list matches through the Focus of Attention interface. For added security, create alarms that trigger when any individual on the watch list is detected.



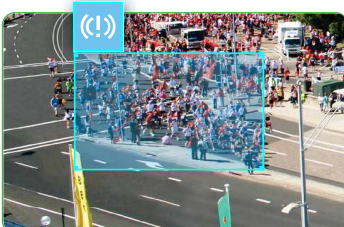
Avigilon Appearance Search Technology

A sophisticated AI search engine that enables investigators to sort through hours of recorded video with ease and quickly locate a person or vehicle of interest across an entire site. Search for a person or vehicle of interest by entering a physical description, by uploading a photo, or by finding an example in recorded video.



Next-Generation Analytics and Self-Learning Video Analytics

ACC™ video management software enables analytic events and alarms to be viewed and searched through an intuitive user interface. Real-time events and forensic capabilities detect and notify operators of scene changes and rules violations.



Unusual Activity and Unusual Motion Detection (UAD & UMD)

Advanced AI technology highlights the unanticipated by automatically flagging unusual activity and motion. Without any configuration, UMD detects atypical movement while UAD is object-aware and detects anomalous behavior (speed and location) of people and vehicles.

UAD	H5A	UMD	H5SL	H5M	H4A	H4SL	H4 MINI DOME
-----	-----	-----	------	-----	-----	------	--------------

Preinstalled on Avigilon Recorders and Appliances

ACC software is pre-installed and configured on Avigilon HD Video Appliances, Network Video Recorders (NVRs), NVR Workstations, ACC ES Recorders, ACC ES Analytics Appliances, ACC ES 8-Port Appliances and the H4ES camera line. You can also install the stand-alone ACC software to meet the needs of a wide variety of projects. Our NVRs come pre-installed with the NVR Analytics Kit to enable our patented Avigilon Appearance Search technology.



Software Editions

The Avigilon Control Center software is offered in three editions: Core, Standard and Enterprise. The Core edition is an entry-level version of our award-winning software that delivers advanced high definition video security capabilities, ease of use, and superior image quality to smaller implementations. The Standard edition is a cost-effective security solution that meets the vital and focused needs of mid-size operations. The Enterprise edition includes all of the Core and Standard features, plus advanced features to make it a powerful, open platform for large-scale video security needs.

SYSTEM	CORE	STANDARD	ENTERPRISE
Cameras per server	24	75	300+*
Cameras per site	24	75	10 000+*
Servers per site	1	1	100+*
Client licenses per server	2	10	Unlimited
Maximum bookmarks	10 000	10 000	10 000
Rule triggers	0	51	Unlimited
HDSM technology support	Yes	Yes	Yes
HDSM SmartCodec technology support	Yes	Yes	Yes
Dual Streaming for ONVIF compliant cameras	Yes	Yes	Yes
H.265, H.264, MPEG4, MJPEG, JPEG2000 video compression	Yes	Yes	Yes
* Actual limits will depend on the hardware environment. Please review Avigilon server and appliance datasheets for applicable limits.			
DEVICE SUPPORT	CORE	STANDARD	ENTERPRISE
Automatic device discovery	Yes	Yes	Yes
Third-party IP cameras and encoders	Yes	Yes	Yes
ONVIF compliant cameras and encoders	Yes	Yes	Yes
H5A cameras with Next-Generation Video Analytics	Yes	Yes	Yes
H4A cameras with Self-Learning Video Analytics	Yes	Yes	Yes
H5SL, H5M, H4SL, H4 Multisensor, H4 PTZ, H4 IR PTZ, H4 Fisheye, H4 Mini Dome, H4ES, and H4 Thermal cameras	Yes	Yes	Yes
H4 Thermal Elevated Temperature Detection (ETD) cameras	Yes	Yes	Yes
Avigilon H3, HD and earlier cameras	Yes	Yes	Yes
Fisheye dewarping	Yes	Yes	Yes
Avigilon analog video encoder	Yes	Yes	Yes
Avigilon Presence Detector (APD) sensor	No	Yes	Yes
H4 Video Intercom	No	Yes	Yes
H4 Pro cameras	No	No	Yes
Avigilon AI Appliance	No	No	Yes
CLIENT	CORE	STANDARD	ENTERPRISE
Video Analytics overlays (Next-Generation Video Analytics, Self-Learning Video Analytics, UAD and UMD)	Yes	Yes	Yes
Joystick support	Yes	Yes	Yes
ACC Mobile 3 app / Web Endpoint including mobile alarm notifications	Yes	Yes	Yes
Avigilon Cloud Services Web Client	Yes	Yes	Yes
FIPS 140-2 Encryption	Yes	Yes	Yes
Certificate management between ACC Client and Server	Yes	Yes	Yes
Emergency privilege override	Yes	Yes	Yes
Two-factor authentication	Yes	Yes	Yes
Password strength meter	Yes	Yes	Yes
Light and dark interface themes	Yes	Yes	Yes
Editable Site View	Yes	Yes	Yes
Multi-camera export with optional password protection	Yes	Yes	Yes
Hourly configurable recording schedule	Yes	Yes	Yes
Saved views	No	Yes	Yes
Maps with configurable icons and camera thumbnail previews	No	Yes	Yes
Integrated web page bookmarking and display	No	Yes	Yes
Focus of Attention interface	No	No	Yes
Active Directory integration	No	No	Yes
Intelligent Virtual Matrix	No	No	Yes
Collaborative investigations	No	No	Yes
Multi-camera privacy blurred export from Avigilon Appearance Search results	No	No	Yes

SEARCH	CORE	STANDARD	ENTERPRISE
UAD and UMD timeline filtering with Skip Play	Yes	Yes	Yes
Intelligent motion search	Yes	Yes	Yes
Thumbnail search	Yes	Yes	Yes
Event search	Yes	Yes	Yes
Point-of-sale (POS) transaction search	No	Yes	Yes
Avigilon Appearance Search technology	No	No	Yes
Alarm search	No	No	Yes
License plate event search	No	No	Yes
ACC INTEROPERABILITY WITH ACM SYSTEMS	CORE	STANDARD	ENTERPRISE
Door and panel input event triggers	No	Yes	Yes
Door access grants	No	Yes	Yes
Shared operator access	No	Yes	Yes
ACM Identity Verification	No	Yes	Yes
ACM Identity Search	No	Yes	Yes
ADD-ON MODULES AND INTEGRATIONS	CORE	STANDARD	ENTERPRISE
POS transaction engine	No	Yes	Yes
Avigilon developed and supported integrations	No	Yes*	Yes
Third party system integrations	No	Yes	Yes
License Plate Recognition with multiple match lists	No	No	Yes
Face Recognition with multiple watch lists	No	No	Yes
*CommScope® iPatch®, RS2 Access It!®, DDS Amadeus 5 and DSX only			
ADDITIONAL FEATURES	CORE	STANDARD	ENTERPRISE
System and motion event e-mail notifications	Yes	Yes	Yes
Two person authenticated recorded video viewing	Yes	Yes	Yes
Camera replacement	Yes	Yes	Yes
Central station notifications including ANSI/SIA DC-09-2013	No	Yes	Yes
Digital input email trigger	No	Yes	Yes
Manual digital output trigger	No	Yes	Yes
Audio recording and output	No	Yes	Yes
APD™ event trigger	No	Yes	Yes
Next-Generation Video Analytics and Self-Learning Video Analytics event configuration	No	Yes	Yes
Camera standby / privacy mode	No	Yes	Yes
Avigilon AI Appliance analytics configuration	No	No	Yes
Redundant recording	No	No	Yes
Failover connections	No	No	Yes
ACC Client alarm notifications and escalation	No	No	Yes
One-time Video Archive	No	Yes	Yes
Tiered Storage Management with Continuous Archive	No	No	Yes

For the latest list of integrations and add-ons supported by Avigilon Control Center software, visit [avigilon.com](https://www.avigilon.com).

System Requirements

Note:

- Run Windows Update before launching Avigilon Control Center (ACC) software.
- NVR recording throughput and retention times can vary according to the number of cameras, camera resolution, estimated percent of motion, continuous recording settings and predefined retention period.
- For best-in-class performance, choose an **Avigilon Certified Solution**.

ACC Client Software

AVIGILON CERTIFIED SOLUTIONS

	DISPLAY MODEL NUMBER	KEY FEATURES
2 Monitor Professional High Performance Remote Monitoring Workstation	RM6-WKS-2MN	<ul style="list-style-type: none">• Preloaded with ACC Client software.• Supports high resolution monitors.• Includes the adapters and accessories for quick deployment.• Avigilon warranty and support included.
4 Monitor Professional High Performance Remote Monitoring Workstation	RM6-WKS-4MN	

SYSTEM REQUIREMENTS	MINIMUM	RECOMMENDED
Operating System	Windows 8.1 (64-bit) or Windows 10 (64-bit) Microsoft .NET 4.6.2	Windows 10 (64-bit) Microsoft .NET 4.6.2
Processor	Intel® dual-core CPU (2.0 GHz) Streaming SIMD Extensions 2 (SSE2)	8th Generation Intel Celeron® CPU or higher
System RAM	4 GB DDR3	8 GB DDR4
Video Card	PCI Express, DirectX 10.0 compliant with 256 MB RAM	NVIDIA® Quadro P620
Network Interface	1 Gbps	1 Gbps
Hard Disk Space	500 GB	500 GB

ACC Server Software

AVIGILON CERTIFIED SOLUTIONS

	DISPLAY MODEL NUMBER	KEY FEATURES
NVR Premium	NVR4X-PRM-64TB / 96TB / 128TB / 157TB / 192TB / 217TB	<ul style="list-style-type: none">• Optimized for video security applications in a 24/7/365 environment• ACC Server software is preinstalled, configured and enhanced for optimal system compatibility• Certified for the Avigilon video security environment - ACC software, LPR, Web Endpoint, Analytics, HDSD and 1-30MP cameras• High throughputs of up to 1800 Mbps• Documented network architecture for a wide variety of applications• Avigilon warranty and support included• Access to Avigilon System Design Tool (SDT) to calculate storage requirements
NVR Standard	NVR4X-STD-16TB-S16 / 16TB / 24TB-S16 / 24TB / 32TB-S16 / 32TB / 48TB-S16 / 48TB	
NVR Value	NVR4-VAL-6TB / 12TB / 18TB / 24TB	
AI NVR	AINVR-PRM-PLUS-64TB / 96 TB / 128 TB / 160 TB AINVR-PRM-64TB / 96 TB / 128 TB / 160 TB AINVR-STD-24TB / 32 TB / 48TB AINVR-VAL-6TB / 12TB	

SYSTEM REQUIREMENTS	MINIMUM	RECOMMENDED
Operating System	Windows Server 2012 R2, Windows 8.1 (64-bit) or Windows 10 (64-bit), Windows Server 2016, Windows Server 2019	Windows Server 2016 or Windows 10
Processor	x86 64 bit dual-core (1.9 GHz) SSE2	Intel® Xeon® E5 v3 (6 cores, 1.9GHz)
System RAM	4 GB DDR3	16 GB DDR4
Network Interface	1 Gbps	4 x 1 Gbps
Hard Drives	SATA-II 7200 RPM Enterprise Class Hard Drives	SATA-III 7200 RPM Enterprise Class Hard Drives

ACC Server Workstation

AVIGILON CERTIFIED SOLUTIONS

	DISPLAY MODEL NUMBER	KEY FEATURES
HD Video Appliance	VMA-AS3-8P2 / VMA-AS3-8P4 / VMA-AS3-8P8 / VMA-AS3-16P06 VMA-AS3-16P09 / VMA-AS3-16P12 / VMA-AS3-24P12 VMA-AS3-24P18 / VMA-AS3-24P24	<ul style="list-style-type: none">• Preloaded and configured with ACC software• High-performance recording capacity• Throughputs of up to 400 Mbps• Avigilon warranty and support included• Access to Avigilon System Design Tool (SDT) to calculate storage requirements
ACC ES HD Recorder	VMA-RPO-4P2 / VMA-RPO-4P4	
ACC ES Analytics Appliance	VMA-RPA-4P2 / VMA-RPA-4P4	
ACC ES 8-Port Appliance	VMA-ENVR1-8P4 / VMA-ENVR1-8P8	
NVR4X Workstation	NVR4X-WKS-4TB / NVR4X-WKS-8TB	
SYSTEM REQUIREMENTS	MINIMUM	RECOMMENDED
Operating System	Windows 8.1 (64-bit) or Windows 10 (64-bit)	Windows 10 (64-bit)
Processor	Intel Quad-core CPU (2.0 GHz) SSE2	8th Generation Intel Celeron CPU or higher
System RAM	4 GB DDR3	8 GB DDR4
Network Interface	1 Gbps	1 Gbps
Video Card	PCI Express, DirectX 10.0 compliant with 256 MB RAM	NVIDIA Quadro P620
Hard Drives	SATA-II 7200 RPM Hard Drives	SATA-III 7200 RPM Hard Drives

Avigilon Appearance Search Technology and Face Recognition

Avigilon Appearance Search technology and Face Recognition require the ACC Analytics Service to be installed on the same computer as the ACC Server software and must meet the listed system requirements:

AVIGILON CERTIFIED SOLUTIONS

	DISPLAY MODEL NUMBER	KEY FEATURES
AI NVR	AINVR-PRM-PLUS-64TB / 96TB / 128TB / 160 TB AINVR-PRM-64TB / 96TB / 128TB / 160TB AINVR-STD-24TB / 32 TB / 48TB AINVR-VAL-6TB / 12TB	Security-hardened NVR that provides server-side analytics for connected third-party and non-analytic cameras.
Analytics Kit for Avigilon Appearance Search Software	HD-NVR-ANK2-1	Tested and verified to provide enough processing power to run Avigilon Appearance Search feature.

SOFTWARE SYSTEM REQUIREMENTS	APPEARANCE SEARCH ONLY	APPEARANCE SEARCH AND FACE RECOGNITION
NVIDIA GPU Requirements	<ul style="list-style-type: none">• 4 GB RAM• NVIDIA Pascal™ or NVIDIA Maxwell™ architecture• CUDA compute capability 5.2 or 6.1• Windows x86_64 Driver Version 418.39 or above	<ul style="list-style-type: none">• 4 GB RAM• NVIDIA Pascal™ architecture or NVIDIA Quadro P1000 video card• CUDA compute capability 6.1• Windows x86_64 Driver Version 418.39 or above

ACC Mobile 3 Software

ACC Mobile version 3 is available for the listed device platforms and requires the ACC Web Endpoint service. The ACC Web Endpoint service comes pre-installed on the AI NVR, ACC ES HD Recorder, ACC ES Analytics Appliance and ACC ES 8-Port Appliance. For NVR systems and HD Video Appliances, it should be installed on the same server as the ACC Server software.

	ANDROID	IOS
Platforms	Android version 6.0 or later	iPad with iOS 11 or later iPhone with iOS 11 or later iPod touch with iOS 11 or later
Processor	n/a	64-bit (Apple A7 or later)

Some images of the product interface have been simulated for illustrative purposes.

© 2016 - 2021 Avigilon Corporation. All rights reserved. AVIGILON, the AVIGILON logo, ACC, AVIGILON CONTROL CENTER, ACM, ACCESS CONTROL MANAGER, APD, AVIGILON PRESENCE DETECTOR, AVIGILON APPEARANCE SEARCH, HDSM, HSDM SmartCodex and HIGH DEFINITION STREAM MANAGEMENT are trademarks of Avigilon Corporation. ONVIF is a trademark of Onvif, Inc. Celeron, Intel, Intel Core and Intel Xeon are trademarks of Intel Corporation or its subsidiaries in the U.S. and/or other countries. Android is a trademark of Google LLC. Apple, Safari, iPad, iPhone and iPod touch are trademarks of Apple Inc. registered in the U.S. and other countries. Other names or logos mentioned herein may be the trademarks of their respective owners. The absence of the symbols ™ and ® in proximity to each trademark in this document or at all is not a disclaimer of ownership of the related trademark. Avigilon Corporation protects its innovations with patents issued in the United States of America and other jurisdictions worldwide (see avigilon.com/patents). Unless stated explicitly and in writing, no license is granted with respect to any copyright, industrial design, trademark, patent or other intellectual property rights of Avigilon Corporation or its licensors.

Aug 2021 — Rev B

