

Register Data Cabling

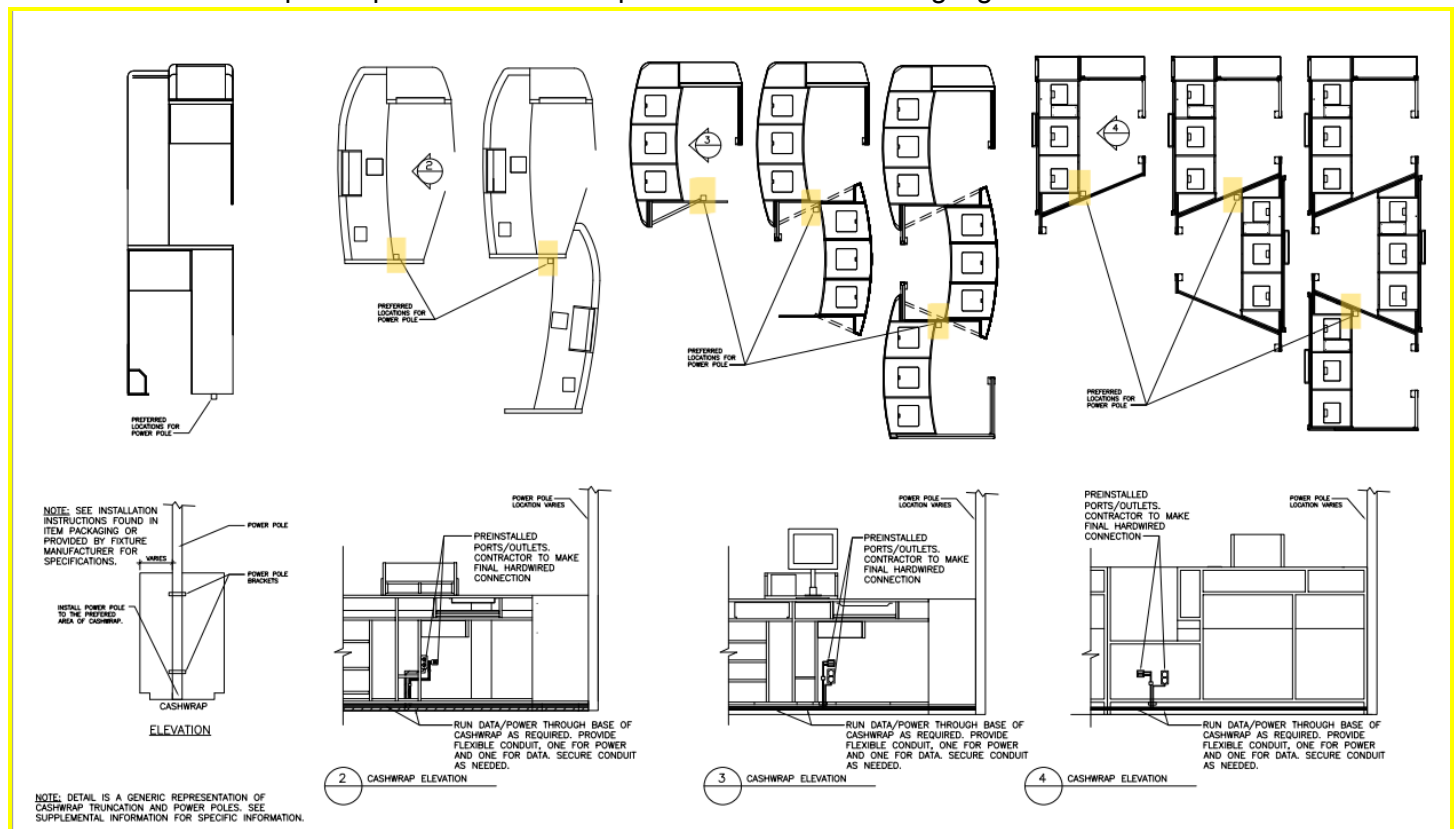
GOAL: Separate data runs for each register and PIN pad.

Please note:

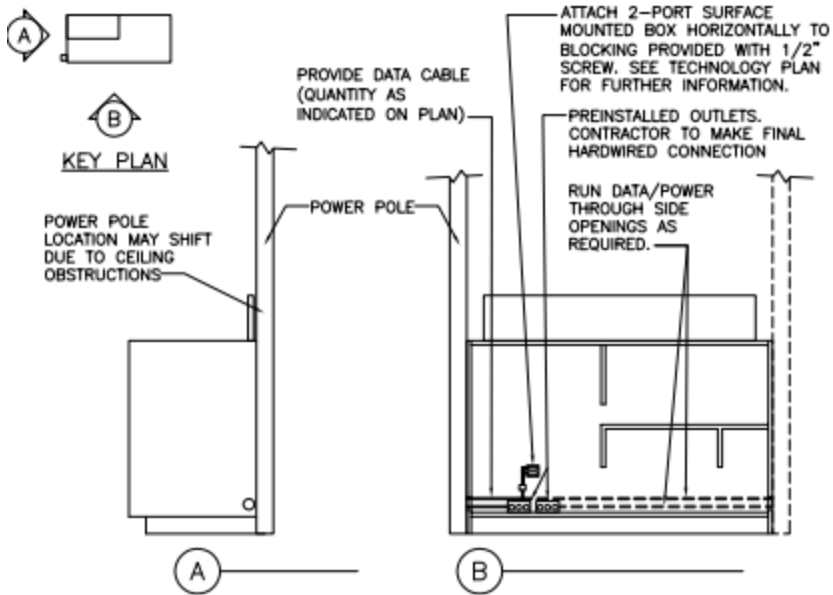
1. In most store,s the data runs go to the smaller IDF network closet in the middle of the store.
2. Data lines can be reused IF all of the following are true:
 - 300ft or under
 - Cat5 or better
 - Be able to terminate in the IDF or MDF Patch panel (NOT the 66 block)

CABLING INSTRUCTIONS:

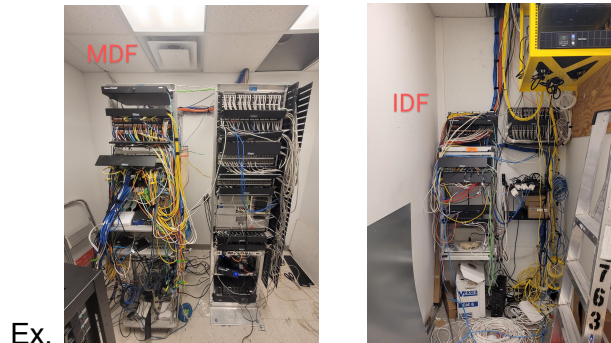
1. NOTE: Start with Sephora registers.
2. Confirm if you will need to install power poles.
 - a. Install power poles in the Kohl's preferred locations as highlighted below.



**PLEASE NOTE: POWER POLE MAY BE ON EITHER SIDE OF CHECKOUT FIXTURES



3. Identify the MDF/IDF locations.



Ex.

- Cables will then be pulled from the MDF/IDF to the cash wraps.
- NOTE:** Identify shortest path to IDF/MDF - cables should **NOT** be run on ceiling tiles.
 - If J hooks present, they should be utilized.
 - If not present – install as shown below.



- At the cash wraps continue to pull either through the ceiling to floor conduit (space within the conduit permitting) or through power pole to final termination point at each register (2 port biscuit).
- Allow no more than 5' service slack in ceiling on both ends of all cables, unless otherwise specified.
- Install patch panel in either MDF/IDF (If applicable).

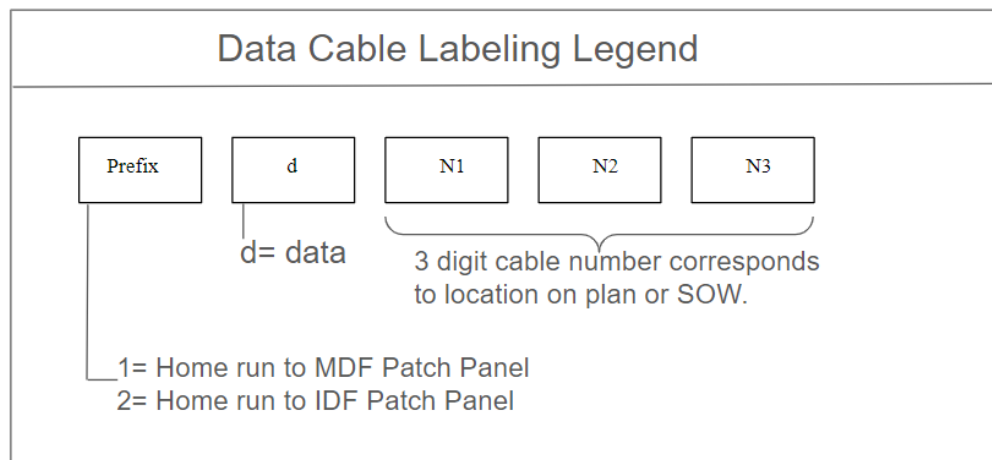
- f. Cables will be terminated in the MDF/IDF using RJ45 keystones and installed into an open spot within the existing or new patch panel. (Minicom Keystones will be provided)



- i. Ex.
- g. Terminate each cable utilizing the 568B wiring standard for each installed RJ45 keystone. (Follow the "B" scheme usually labeled on the keystone.)
- h. If reusing existing cabling re-terminations - replacement of damaged biscuit boxes may be needed.

4. Label each cable, patch panel port and biscuit box.

- a. Data digit Cable Number:
- Label all data cables using Kohl's approved label scheme with typed wire-wrap labels 3" from terminations on both ends.
 - The first Digit indicates what data closet cables are run to.
 - Prefix = 1 - Indicates the data is run to the MDF
 - Prefix = 2 - Data is run to the IDF
 - Data Runs should be either MDF = 1D#### or IDF = 2D####.



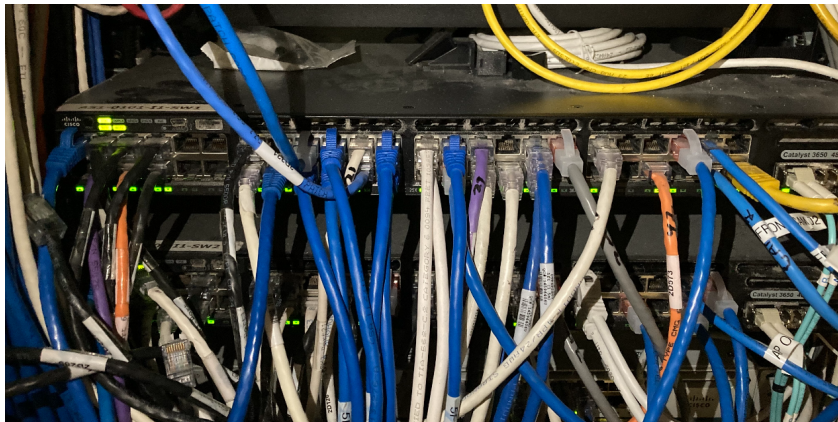
5. Cables in network closets must be bundled neatly in Velcro every 12 – 18" from ceiling to racks.
6. Cables must use appropriately sized gradual bend radius structure to transition from horizontal to vertical, at the same height as the horizontal J-hook cable path (if applicable).
- All Data cable jacks must be installed in the existing modular Panduit patch panels on fixed 19" floor or wall mount data racks.
 - Label patch panel to match the biscuit box in the cash wrap. Handwritten labels are not allowed.

Patch Panel labeled with corresponding jacks



7. All technicians are required to verify new data cable passes 100%.
 - a. Use data Lan tester that will provide a pass/fail and length reading. Length must not exceed 300'. All fails must be corrected.
 - b. Once the new cable run has been tested and verified, perform cross connects from new/existing cable run to the network switch in the MDF/IDF.

***Note: If an approved switch port has a cable connected to it and has a green link light, DO NOT use. Only use approved ports that do not have a link light. ***



- c. Front Associate registers use unused data numbers 212-228. If additional are needed continue numbering up to 248.
- d. Sephora should be 285-290
- e. Service desk should be: 125-140
- f. Self-Checkout should be: 200-211



CUTOVER INSTRUCTIONS:

1. NOTE: This should be completed one register at a time.
2. Remove register from PIN pad hub Ether 2 port and connect register with new patch cable to new data cable run.



Verifone Pinpad Hub

3. Confirm completion/validation of POC register with store manager. Take a pic of each receipt and label appropriately.
 - a. Store manager test instructions:
 - i. NOTE: A debit will always return all zeroes, and thus is not the preferred method to test.
 - ii. Login successfully to POC app
 - iii. Pair PIN pad if needed.
 - iv. The cash drawer pops open when the register is opened.
 - v. Scan item(s) with hand scanner
 - vi. Complete sale using the store credit card with PIN pad
 - vii. Print out a receipt (verify Auth code is not all zero's (000000) - See example below.
 - viii. Conduct returns as needed to void charges made.



DELIVERABLES:

Photos as follows:

- (1) each area working on before: (ACO, CS, Sephora, IDF, MDF)
- (1) each of power pole installation
- (1) each new cable pass reading
- (1) each new cable length readout
- (1) each new biscuit jack (properly labeled)
- (1) every patch panel in IDF & MDF
- (1) full IDF/MDF after
- (1) showing dual cabled (un-daisy chained)
- (1) test receipt of each register tested with the manager (MOD)

Kohls Parts List:

7131107	GenSPEED® 6 Cat 6 Plenum, 23 AWG, Cable, 1000 ft., Black, Pull Pac
7131101	GenSPEED® 6 Cat 6 Plenum, 23 AWG, Cable, 1000 ft., White, Pull Pac
CJ688TGGR	Minicom Green Cat6 Jack
CJ688TGBU	Minicom Blue Cat6 Jack
CFPE2WHY	Mini-Com Faceplate, 2 Port, White w/label pocket
CFPE4WHY	Mini-Com Faceplate, 4 Port, White w/label pocket
CFPE10WH-2GY	Mini-Com Faceplate, 10 Port, White w/label pocket
KWPK6	Stainless Steel Keystone phone plate, category 6
CBX1WH-A	1 Port Surface Mount Box
CBXQ2WH-A	2 Port Surface Mount Box
CBXQ4WH-A	4 Port Surface Mount Box
CPP24WBLY	24 Port Modular Patch Panel
CPP48WBLY	48 Port Modular Patch Panel
CMBWH-X	Mini-Com Blank Module, 1 Port, White blank
80714-W	1-Gang Blank Wallplate, Standard Size, Thermoplastic Nylon, White Blanking cover
CMBBL-X	Mini-Com Blank Module, 1 Port, Black
55053-703	Standard 2-Post Rack 3"D (80 mm); 7ft Tall x 19"W (483 mm); Grounded; UL Listed; Black
11294-719	
alt pn ER-S2CM	19"D (480 mm) Low Profile Shelf for 19" Rack, Black
12407-719	Adjustable Bracing Kit for 19" Rack, Black
WMPF1E	Horizontal Single-Sided Cable Manager, 2RU, 3.7 in. Depth
WMPV45E	NetRunner™ Vertical Dual-Sided Manager, 45RU, 4.9 in. Wide
Caddy CAT12 CAT16 CAT21 CAT32	Caddy J-Hooks various sizes
CF54	Cable CF 54 Series Cable Tray, different widths and depths
LV1XL	Low Volt Ring
GB2B0304TPI-1	Grounding Busbar - GB2B0304TPI-1 or GB2B0306TPI-1
UTP28SP**	Panduit Cat6 28AWG (min diameter) Patch Cords ** = length in feet and color
31090	Velco - comes in rolls of 25 yards. No one should be using ZIPTIES EVER
UDO12KITEZ	Universal Dropout Kit