



## Request For Proposals

### Request For Proposal (RFP) #HER-FIBER-24-01

**General Information:** Grand Traverse Resort & Casinos (GTR&C) Economic Development Corporation (EDC) is soliciting proposals (Quote) for **Fiber Optic Infrastructure Installation Services** including design and engineering work for the Kchi-Noodin Kaamdaakiing residential development property located in Grand Traverse, Michigan.

Questions and proposals regarding the work to be completed should be submitted to:

**Keegon Cabinaw**  
**Network Administrator**  
**EDC IT Department**  
2331 N. West Bay Shore Drive  
Peshawbestown, MI 49682  
(231) 534-8458 (office)  
Keegon.Cabinaw@gtbindians.com

To be considered, proposals must be received on or before:

**3:00 pm on Friday, May 10, 2024. Clearly mark on the proposal “Proposal Enclosed Time Sensitive – Kchi-Noodin Kaamdaakiing Fiber Infrastructure Proposal”. A facsimile will NOT be accepted. An e-mail submission is acceptable.**

**Scope of Work:** The Fiber Optic Infrastructure Consultant shall provide the following services (but not limited to):

- **Engineering and Design of a fiber optic infrastructure to provide connection between the service colocation building and existing and future planned buildings within the residential development.**
- **Necessary Permitting and Assessments**
- **Installation of fiber, conduits, vaults, and splice cases, including splicing of fiber optic cabling.**

- **Map** – Refer to Exhibit A.

Method of Measurement and Basis for Payment: Payment for Fiber Optic Infrastructure Installation Services shall be paid for upon completion of work.

**Insurance Requirement:**

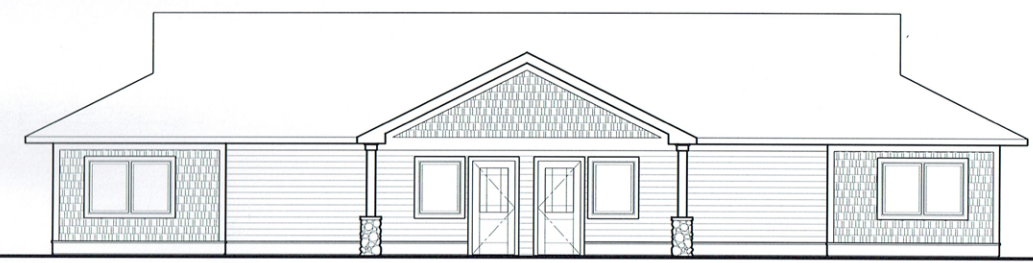
\$1 Million occurrence/\$2 Million aggregate



PHASING PLAN



Single - Family Cottages  
(1,000-1,100 sf without basements - 2 bed, 1 bath)



Courtyard Elders Housing (Duplex)  
(850-1000 sf per unit on slab or crawl, 2 bed, 1 bath)



4-Unit Apartments  
(900-1,000sf - 1 and 2 bedroom)



3 & 4 -Unit Townhomes  
(780 - 1,650sf - 1,2,3 and 4 bedroom)

Single-Family Cottages

Courtyard Elders Housing

Park Area

Park Area

Open Space

Basin

Play-Ground

Play-Ground

PHASE - I

PHASE - II

PHASE - III

Single-Family Lots  
(8,000-18,000sf)

Community Center, Gym, & Pavilion

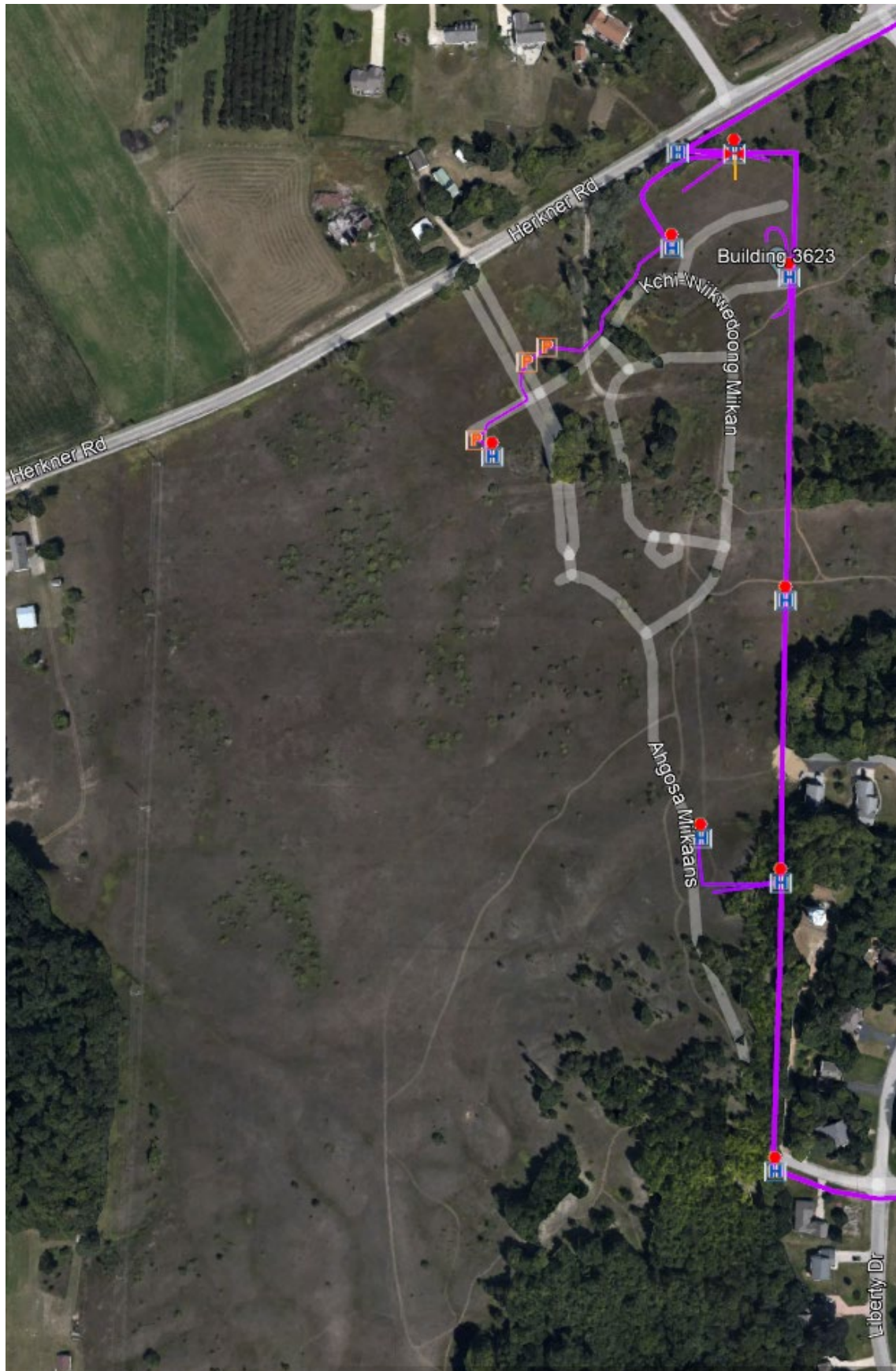
Maintenance Facility  
(12,500sf)

NOTES:	
Office =	30,000 SF
Community Center =	6,500 SF
Gym =	8,000 SF
Pavilion =	2,000 SF
Maintenance Facility =	12,500 SF
Daycare Facility =	13,000 SF
Total Square Feet =	72,000 SF

Single-family Lots =	33
Single-family Cottages =	23
Courtyard Elders Housing =	34
Townhomes =	43
Apartments =	40
Total Units =	173







GTB Herkner Fiber Optic Infrastructure RFP 2024