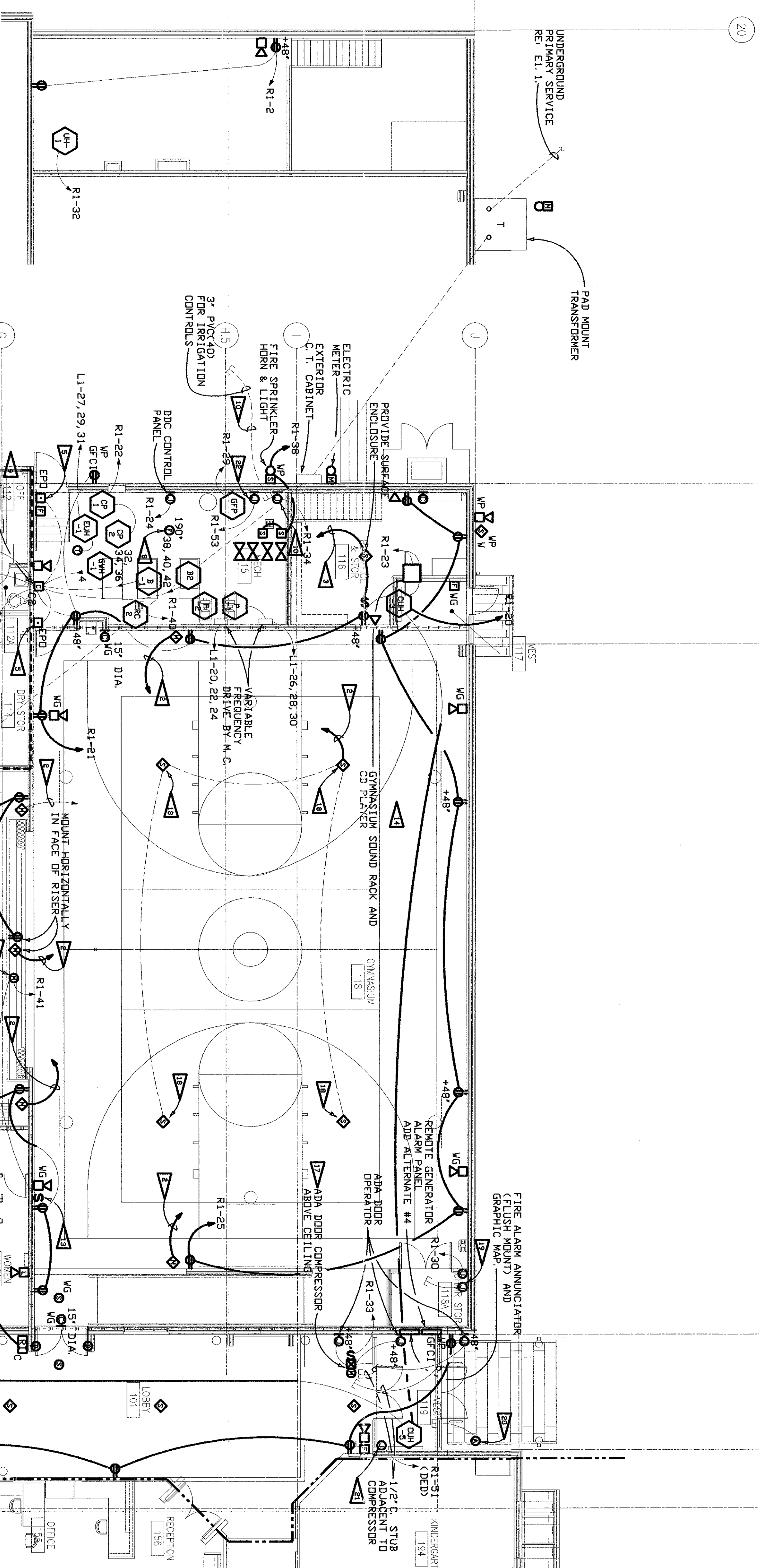


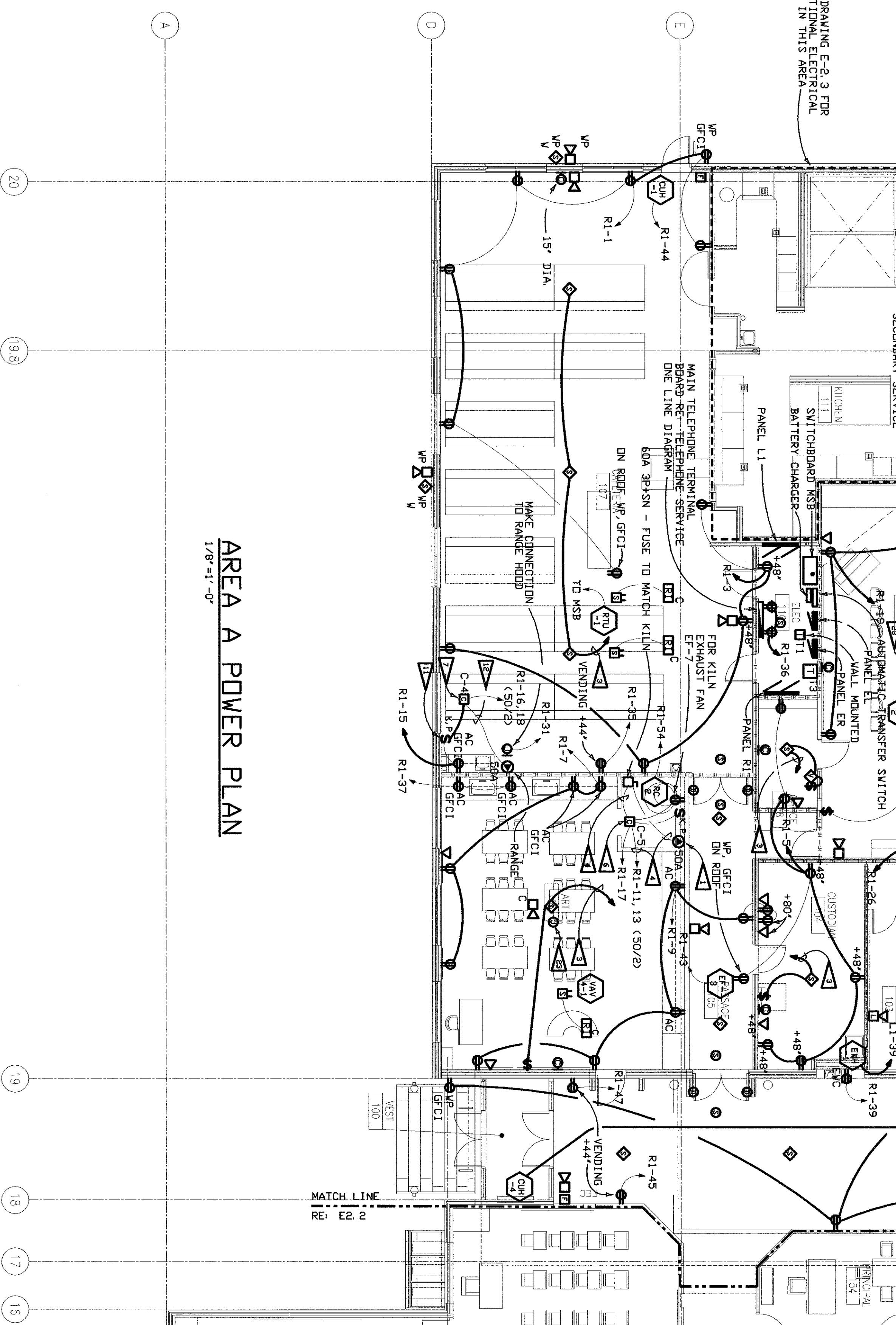
- DRAWING NOTES:
- PROVIDE SPECIAL OUTLET AND MATCHING PLUG AND COND SET FOR KILN.
- CONNECT TO GRASSHOPPER SOUND PACK, RE: INTERCOM ONE-LINE DISCREP.
- TO MAIN INTERCOM RACK IN WORK ROOM 151. RE: INTERCOM ONE-LINE DIAGRAM.
- 3 #6 + 1 #6 NEUTRAL + 1 #6 GROUND - 1" CONDUIT.
- PROVIDE 1" RED PUSHBUTTON STATION MOUNTED AT +48". PROVIDE INSURED NUISANCE RELAYING TROUBLE, EMERGENCY STOPPER. CONNECT CONTROL STATIONS IN SERIES.
- CONTRACTOR C-5 MOUNTED ABOVE CEILING, SQUARE D MODEL 5812, 60AMP, MECHANICALLY HELD, 120V CONTROL, 600V REPELACE CIRCUIT.
- CONTRACTOR C-4 MOUNTED ABOVE CEILING, SQUARE D MODEL 5812, 60AMP, MECHANICALLY HELD, 120V CONTROL, 600V REPELACE CIRCUIT.
- CONTRACTOR C-3 MOUNTED ON WALL, SQUARE D MODEL 2580, 8 POLE, 30 AMP CONTROL, 120V CONTROL, 600V REPELACE CIRCUIT. CONNECT COIL OF CONTRACTOR TO LOCAL REPELACE CIRCUIT.
- FIXED TEMPERATURE THERMAL DETECTOR.
- CONTRACTOR C-2 MOUNTED ON WALL, SQUARE D MODEL 2580, 8 POLE, 30 AMP CONTROL, 120V CONTROL, 600V REPELACE CIRCUIT. CONNECT COIL OF CONTRACTOR TO LOCAL REPELACE CIRCUIT.
- CONTRACTOR C-1 MOUNTED ON INTERCOM CONTROL STATION, SQUARE D MODEL 2580, 8 POLE, 30 AMP CONTROL, 120V CONTROL, 600V REPELACE CIRCUIT. CONNECT COIL OF CONTRACTOR TO LOCAL REPELACE CIRCUIT.
- PROVIDE 120V-240V CONNECTION TO INTERCOM CONTROL STATION, SQUARE D MODEL 2580, 8 POLE, 30 AMP CONTROL, 120V CONTROL, 600V REPELACE CIRCUIT. CONNECT COIL OF CONTRACTOR TO LOCAL REPELACE CIRCUIT.
- CONTRACTOR CONTROL STATION, RE: SPECIFICATIONS, EMERGENCY DEVICE COVER TO INDICATE CIRCUIT CONTROLLED, CONDUIT.
- PROVIDE BRACKET CIRCUIT OF 3 #6 + 1 #10 GROUND - 3/4" CONDUIT.
- INSTALL AND WIRE CONTROL STATION AND WIRE MOUNTED SCREEN, COORDINATE LOCATION IN FIELD.
- PROVIDE 120V-240 VAC CONNECTION FOR DOC CONTROLS, COORDINATE WITH EQUIPMENT SUPPLIER.
- NOT USED.
- NOT USED.
- PROVIDE 120V-240V CONNECTION TO AIR DOW COMPRESSOR AND INSTALL AND CONNECT DOW OPERATORS FURNISH WITH DOORS, COORDINATE WITH EQUIPMENT SUPPLIER.
- MOUNT BOPERS OF SPARKERS LEVEL WITH BOTTOM OF JOISTS. SPARKERS SHALL NOT BE HANG BELOW JOISTS. RUN CONDUITS PARALLEL AND PERPENDICULAR TIGHT TO STRUCTURES.
- PROVIDE 120V-240V CONNECTION TO SECURITY CAMERA, COORDINATE EXACT LOCATION WITH OWNER. PROVIDE A CONNECTION BOX FOR DATA CABLEING TO CAMERA WITH A 3/4" EMT CONDUIT STUBBED INTO CEILING SPACE BELOW.
- PROVIDE JUNCTION BOX WITH 1/2" EMT STUBBED ABOVE NEAREST ACCESSIBLE CEILING FOR CORD READER, COORDINATE EXACT LOCATION WITH OWNER.
- PROVIDE 120V-240 CONNECTION AS REQUIRED FOR OWNER'S CAMERA, COORDINATE WITH EQUIPMENT SUPPLIER.
- PROVIDE 120V-240 CONNECTION TO KIDS CONTROL PANEL, COORDINATE WITH MECHANICAL CONTRACTOR.
- PROVIDE A JUNCTION BOX FOR DATA CABLEING TO FUTURE PROJECTOR.
- GENERAL NOTES:
- REFER TO MECHANICAL DRAWINGS FOR LOCATIONS OF DUCT SPACE DETECTORS AND CONNECT PER SPECIFICATIONS AND FIRE ALARM ONE-LINE DRAWING.

1. IRRIGATION BOOSTER PUMP IS TO BE INCLUDED AND WILL BE INSTALLED BY THE CONTRACTOR. THE SPECIFICS OF THE IRRIGATION BOOSTER PUMP WILL BE DETERMINED ONCE THE ON-SITE WATER SUPPLY CONDITIONS ARE KNOWN. THE PUMP WILL BE INSTALLED BY THE CONTRACTOR IN THE MECHANICAL ROOM PER THE MANUFACTURER'S SPECIFICATIONS WITH A 3-PHASE 460V POWER SOURCE. ANY QUESTIONS SHALL BE DIRECTED TO THE PROJECT ARCHITECT.



MEZZANINE 200 POWER PLAN
SCALE: 1/8" = 1'-0"

1/8 = 1'-0"



AREA A POWER PLAN
1/8"=1'-0"

1/8" = 1' - 0"

THESE RECORD DRAWINGS HAVE BEEN PREPARED BASED ON INFORMATION PROVIDED BY OTHERS. THE CONSULTANT HAS NOT VERIFIED THE ACCURACY AND/OR COMPLETENESS OF THIS INFORMATION AND SHALL NOT BE RESPONSIBLE FOR ANY ERRORS OR OMISSIONS THAT MAY BE INCONSPICUOUS AS A RESULT OF ERRONEOUS INFORMATION PROVIDED BY OTHERS.

LKA PARTNERS
INCORPORATED
A Professional Corporation
for Architecture and Planning
430 North Tejon Street Suite 2000
Colorado Springs Colorado 80903
Tel: 719.473.8446 fax: 719.473.8446
e-mail: www.lkapartners.com

RECORD DOCUMENTS

These Record Documents have been prepared based on information (marked-up prints, drawings and other data) provided to the Architect by the Contractor. The Architect has not verified the accuracy and/or completeness of this information and shall not be responsible for the errors or omission which may be incorporated herein as a result.

© Copyright 2004 The LKA Partners, Inc. This document and the information contained herein may not be reproduced or attempted from without the express written permission of The LKA Partners, Inc. Unauthorized copying, disclosure or construction use are prohibited by copyright law.

Elementary
School No. 9

CEI CONSULTING
ENGINEERS INC.

ELECTRICAL ENGINEERING

1710 Chapel Hills Drive
Colorado Springs, CO. 80920
Telephone: (719) 594-0022
Facsimile: (719) 594-0538

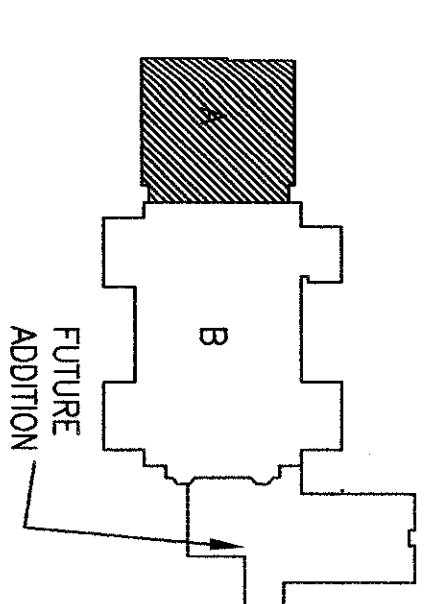


FALCON
SCHOOL DISTRICT 49
A Special Place for Everyone


Falcon
School District 49
10850 E. Woodmen Road
Falcon, Colorado 80831

RECORD DRAWINGS

Area Key Plan




TRUE NORTH



A circular compass rose divided into four quadrants by a vertical and a horizontal line. A thick black line points towards the top-right, representing North-Northeast.

PLAN NORTH



A circular compass rose divided into four quadrants by a vertical and a horizontal line. A thick black line points towards the top, representing North.

POWER PLAN

Scale 1/8" = 1'-0"

72

Elementary School 9 Project No. 03-0114
The LKA Partners Incorporated