


Installation Guide

Maxwell

NickHCS

September 4, 2024

UniFi Devices	Quantity
 U7 Pro Max	5



U7 Pro Max



U7 Pro Max



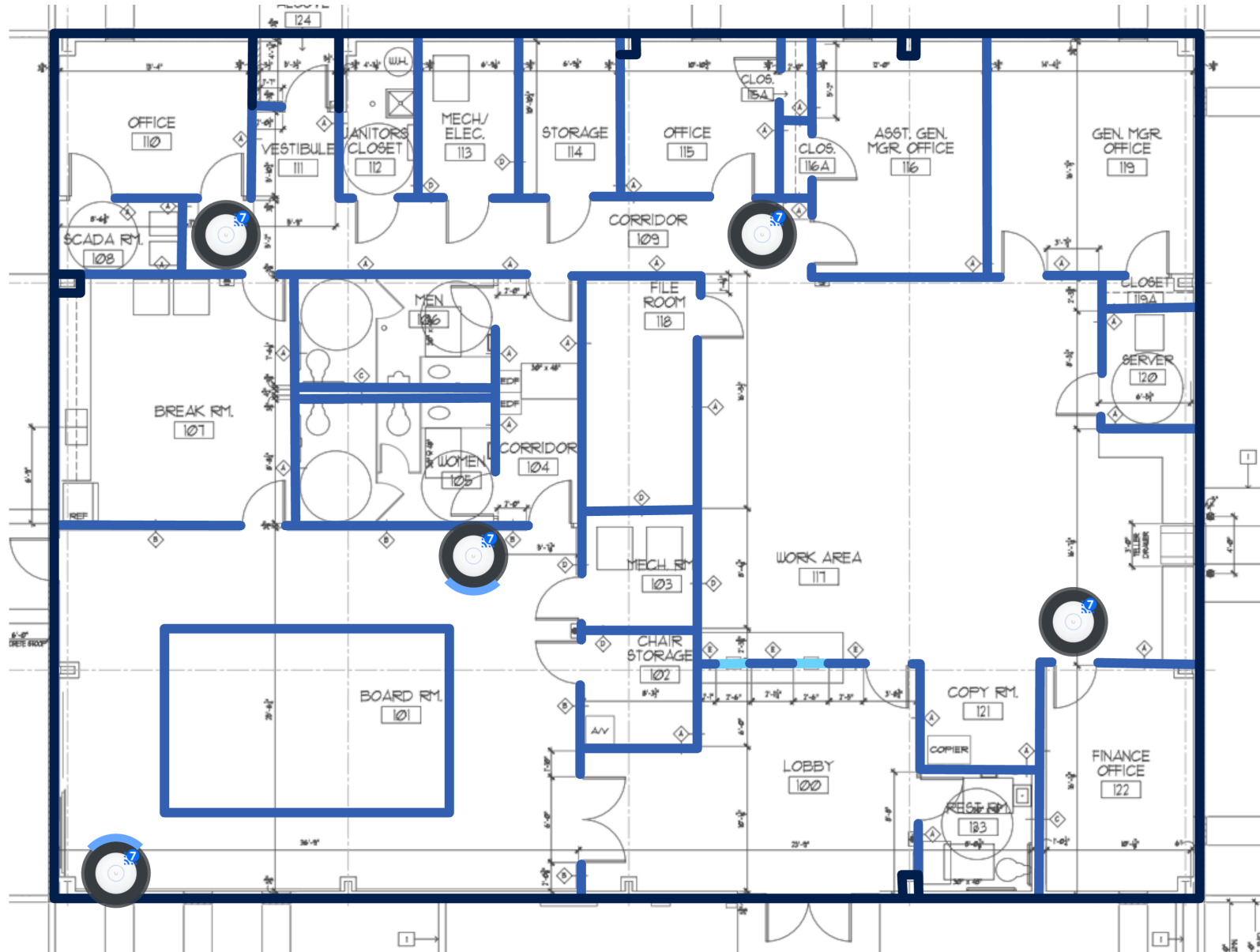
U7 Pro Max



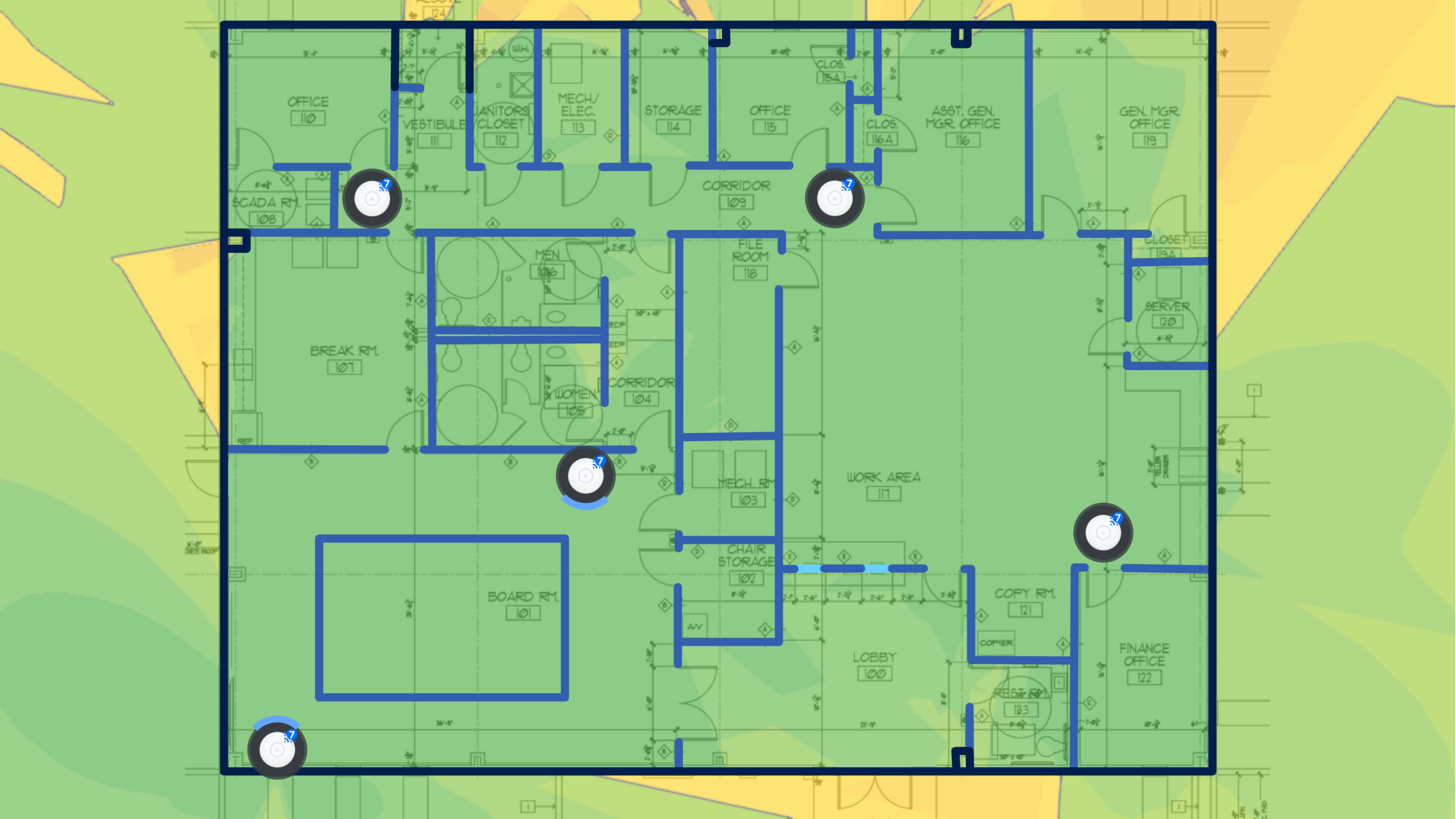
U7 Pro Max



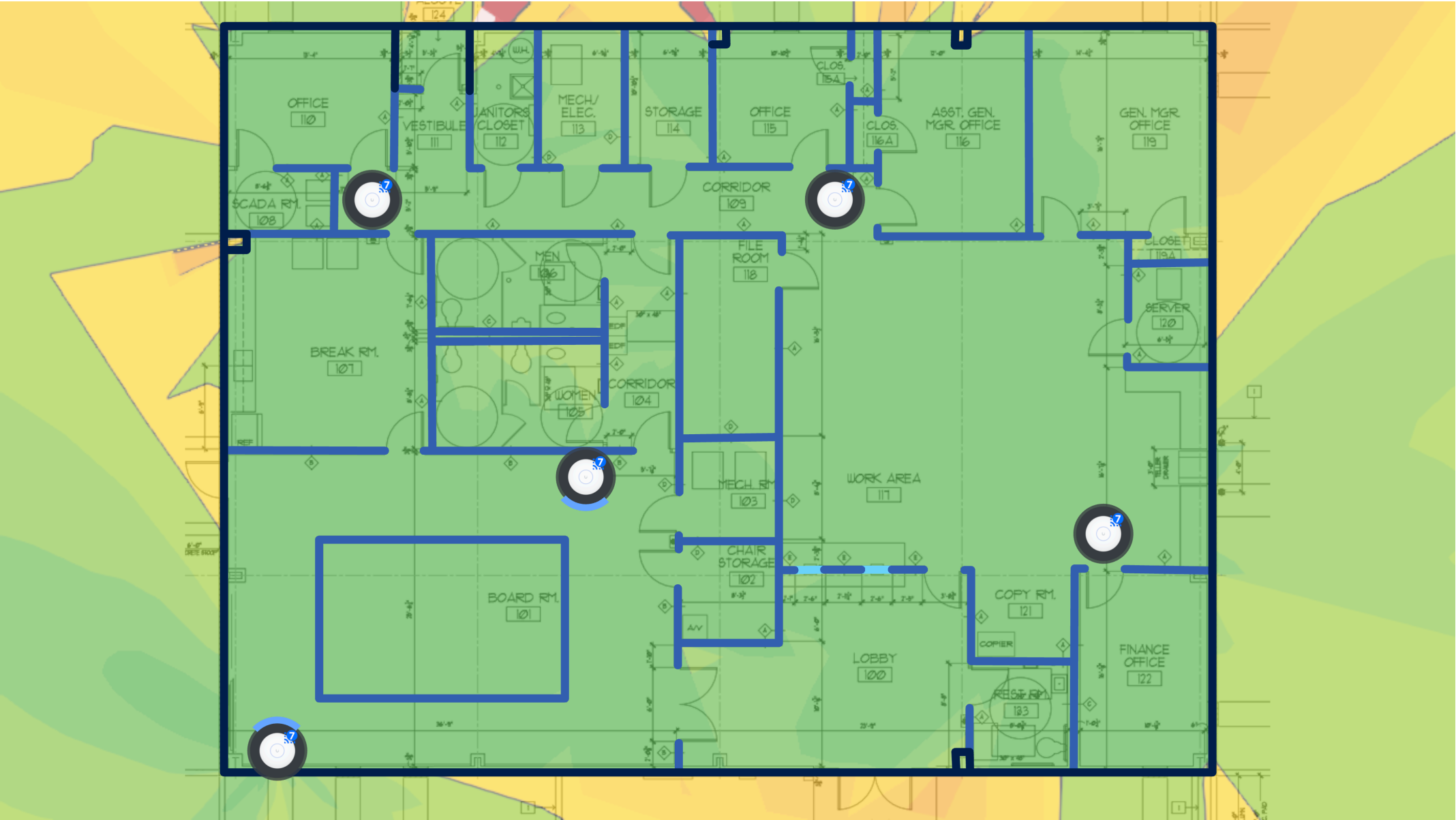
U7 Pro Max



Estimated 2.4GHz WiFi Coverage



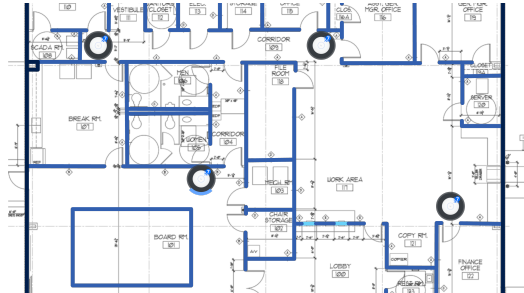
Estimated 5GHz WiFi Coverage



Step 1

Completed ☒

Mount all devices in right places as specified on the **Floor Plan** and add cabling.



Step 2

Completed ☒

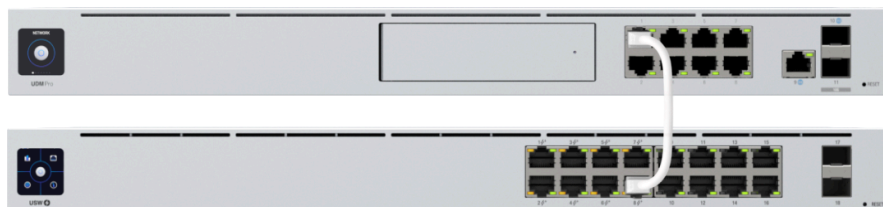
Turn Dream Machine (UDM Pro) on and connect it to the internet. Then, finish setting it up in either the UniFi Network mobile app, or the web application at unifi.ui.com.



Step 3

Completed ☒

Connect your console and switch with a network cable, as shown below. You can verify this connection on the following **Port View** page.



Step 4

Completed ☒

Connect your other UniFi devices to the switch with network cables, as shown below. You can verify all connections on the following **Port View** page.

