

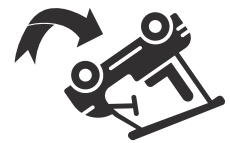
# Low-Speed and Utility Vehicle Safety

## REMEMBER

Low-speed and utility vehicles:



Have fewer safety features



Easy to tip and roll



Can throw passengers and cargo



## REDUCE SPEED FOR:

- Downward slopes
- Rough terrain
- Turns
- Curves
- Blind Spots

Make sure drivers and vehicle are safe

Be aware of surroundings

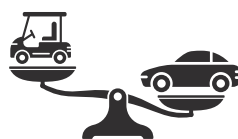
Use handholds when vehicle is in motion

Keep cargo and passengers secure

Park on level ground and remove keys

Yield to vehicles and pedestrians

Follow owner's manual, company policy and local laws



Low Weight

+



Low Speed

≠



Low Risk