

SYMBOL LEGEND

- #

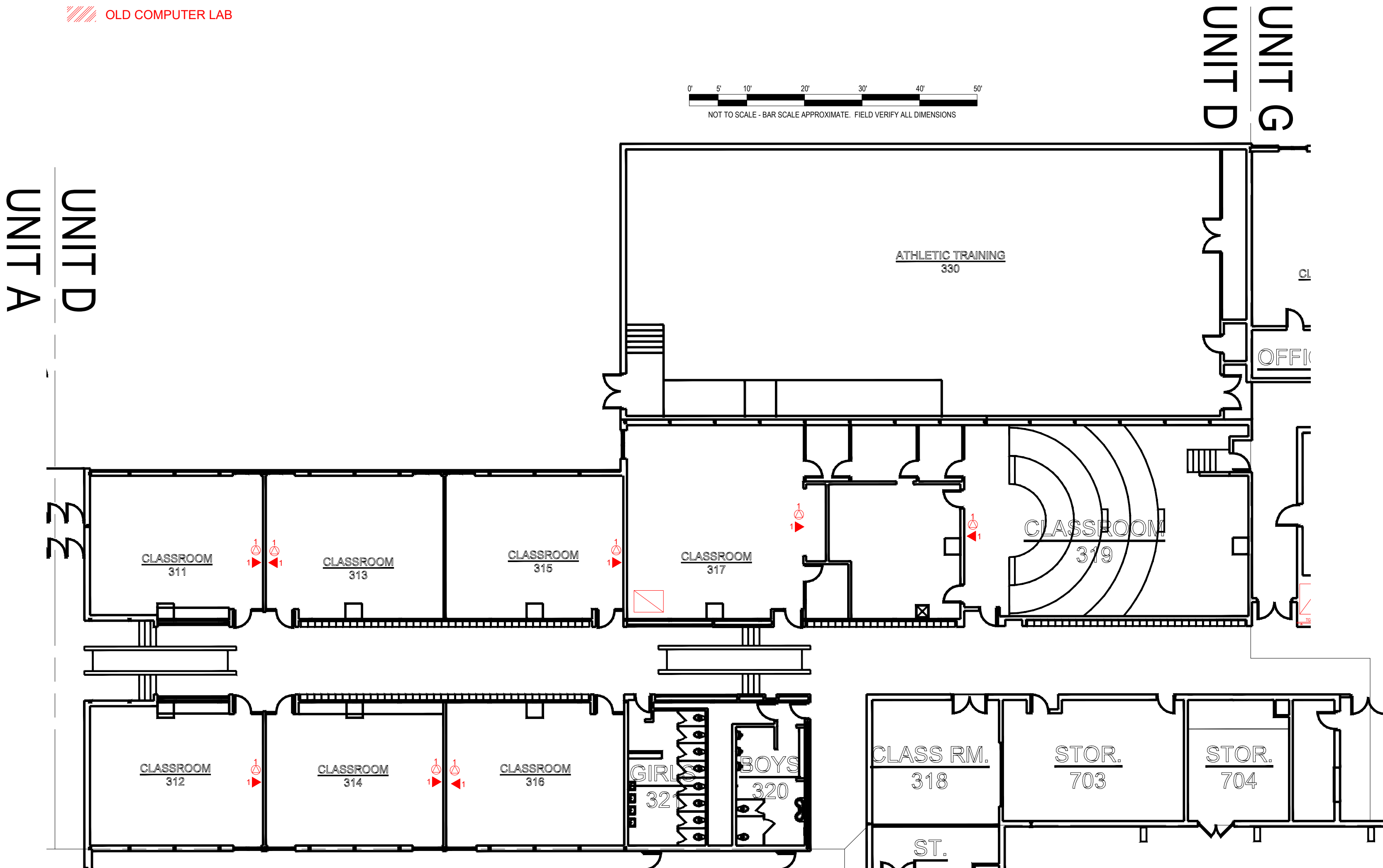
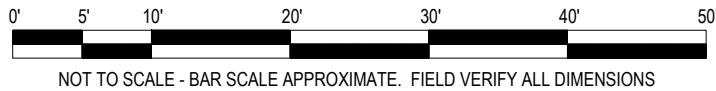
UTP LOCATION, QTY AS NOTED
- ⦿

CEILING UTP LOCATION, QTY AS NOTED
- TELECOM CABINET
- TBB—

NEW TELECOM BUS-BAR
- TBB—

EXISTING BUS-BAR
- ////

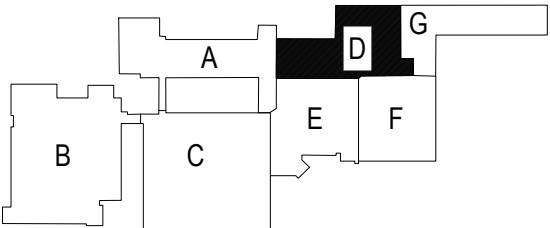
OLD COMPUTER LAB



GENERAL NOTES

1. ALL UTP CABLE SHALL BE ANSI/TIA CATEGORY 6A. PLACE WALL LOCATIONS IN A SURFACE MOUNTED SINGLE-GANG BACK BOX WITH A WHITE TWO PORT FACEPLATE.
2. THE UNUSED TOP PORT OF THE FACEPLATE IS TO BE FILLED WITH A BLANK KEYSTONE JACK INSERT.
3. PLACE WALL LOCATIONS CENTERED BELOW WHITEBOARD AT STANDARD HEIGHT.
4. LOCATIONS WITHOUT WHITEBOARDS, CENTER THE INSTALLATION ON THE WALL AT STANDARD HEIGHT.
5. ALL CABLE BELOW CEILING SHALL BE CONCEALED IN RACEWAY PROVIDED BY CONTRACTOR.
6. PROVIDE CEILING LOCATION WITH SERVICE LOOP LONG ENOUGH TO REACH THE FARTHEST LOCATION IN THE ASSOCIATED ROOM. SECURELY FASTEN SERVICE LOOP TO STRUCTURE.
7. TERMINATE ALL CATEGORY 6A CABLES ON WHITE 8P/8C (RJ45) JACKS.
8. LOCATION OF BUS BLOCKS ARE ESTIMATED, USE BEST PRACTICES FOR INSTALLATION LOCATION.
9. FOR ESTIMATES ASSUME ALL CABINETS NEED GROUNDING.

KEYMAP



1/24/2025	DESIGN	DLF
12/17/2024	DESIGN	EGH
DATE	ISSUE	AUTHOR

SWARTZ CREEK
COMMUNITY SCHOOLS

STRUCTURED CABLING

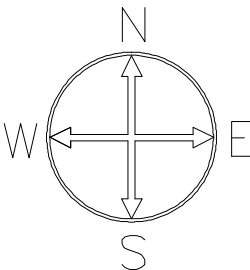
SWARTZ CREEK HIGH
SCHOOL



CONVERGENT
TECHNOLOGY PARTNERS

6197 Miller Road Suite 4
Swartz Creek, MI 48473
Phone: 810.720.3820
www.ctpartners.net
TECHNOLOGY DESIGN | CONSULTING | PLANNING

HS-T101D



1
T101D

HIGH SCHOOL UNIT D
NTS