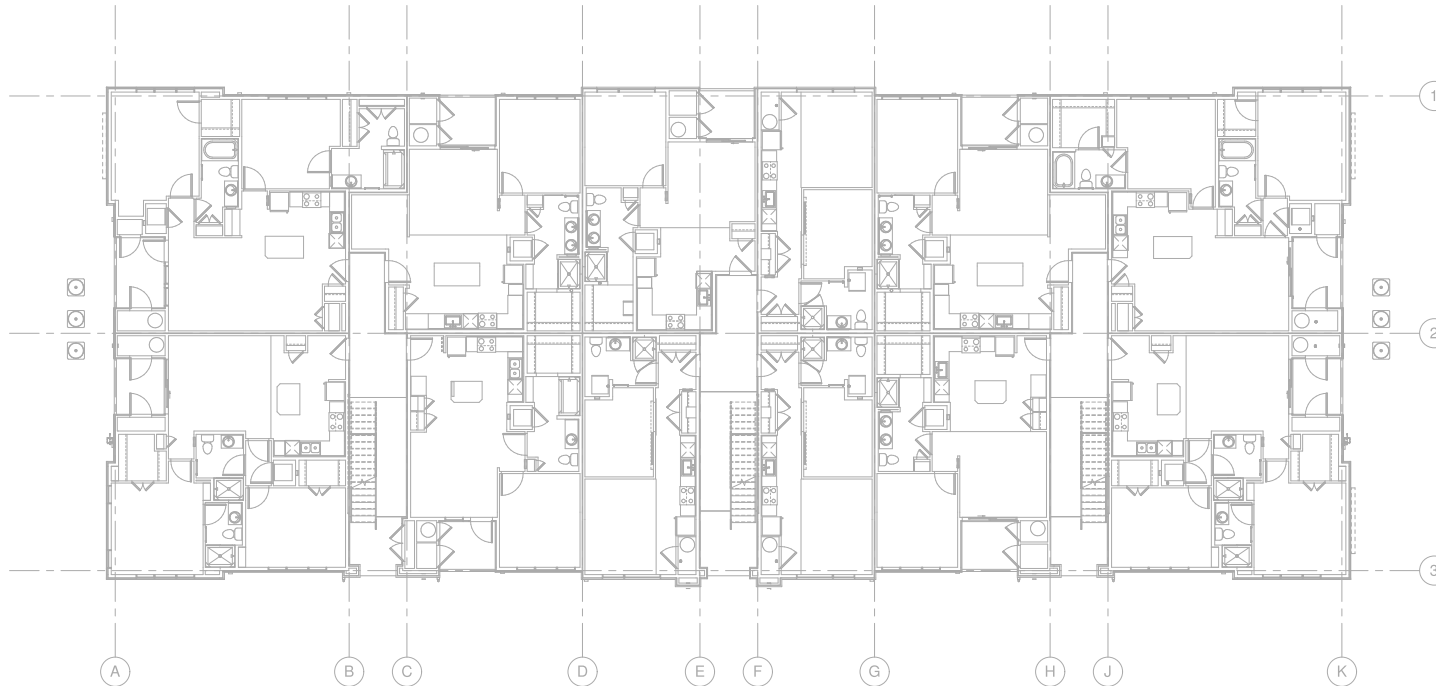


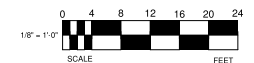
SYMBOL		SYMBOL	DESCRIPTION
NS	POE NETWORK SWITCH (MOUNTED IN EQUIPMENT RACK)	PP	NETWORK PATCH PANEL (MOUNTED IN EQUIPMENT RACK)
FS	NETWORK ETHERNET FIBER SWITCH (LOCATED IN EQUIPMENT RACK)	WAP	WIRELESS ACCESS POINT - PARTITIONED FOR PUBLIC & PRIVATE NETWORK ACCESS
WAP	WIRELESS ACCESS POINT - PARTITIONED FOR PUBLIC & PRIVATE NETWORK ACCESS	EP	EMERGENCY PHONE (WALL MOUNTED WITH CALL BUTTON AT A.D.A. ACCESSIBLE HEIGHT)
DO	DATA OUTLET (WALL MOUNTED / FLOOR OUTLET)	DO	DUAL DATA OUTLET (WALL MOUNTED / FLOOR OUTLET)
DO	DUAL DATA OUTLET (WALL MOUNTED / FLOOR OUTLET)	DO	DATA-VOICE OUTLET (WALL MOUNTED / FLOOR OUTLET)
DO	DATA-VOICE OUTLET (WALL MOUNTED / FLOOR OUTLET)	DO	QUAD DATA OUTLET (WALL MOUNTED / FLOOR OUTLET)
DO	QUAD DATA OUTLET (WALL MOUNTED / FLOOR OUTLET)	DO	DUAL DATA-VOICE OUTLET (WALL MOUNTED / FLOOR OUTLET)
DO	DUAL DATA-VOICE OUTLET (WALL MOUNTED / FLOOR OUTLET)	DO	DATA-VIDEO OUTLET (WALL MOUNTED / FLOOR OUTLET)
DO	DATA-VIDEO OUTLET (WALL MOUNTED / FLOOR OUTLET)	DO	DATA-DATA-VIDEO OUTLET (WALL MOUNTED / FLOOR OUTLET)

DATA/COMM/NETWORK NOTES

1. REFER TO SHEET TD-000 FOR STANDARD DATA/COMM/NETWORK DEVICE CABLING REQUIREMENTS & MOUNTING HEIGHTS.
2. REFER TO DATA/COMM/NETWORK FLOORPLAN SHEETS FOR BUILDING DATA/COMM/NETWORK DEVICE LAYOUT.
3. REFER TO DATA/COMM/NETWORK ELEVATION & SECTION SHEETS FOR MDF/IDF ROOM LAYOUT & Riser ROUTING DETAIL.
4. REFER TO DATA/COMM/NETWORK UNIT SHEETS FOR REQUIRED UNIT "HOME RUN" WIRING & IN-UNIT DATA/COMM/NETWORK DEVICE LAYOUT.
5. REFER TO DATA/COMM/NETWORK DETAIL SHEETS FOR DATA/COMM/NETWORK SYSTEM DETAILS & DIAGRAMS.
6. CABLE & CONDUIT ROUTING SUBJECT TO CHANGE BASED ON FIELD CONDITIONS.
7. ELECTRICAL CONTRACTOR TO PROVIDE POWER AS SPECIFIED.
8. ELECTRICAL CONTRACTOR TO PROVIDE CONDUIT AS SPECIFIED.
9. ALL CABLEING IS TO BE ROUTED THROUGH DESIGNATED CONDUIT, SLEEVING & PULL BOX BY INSTALLING CONTRACTOR.
10. SERVICE PROVIDER & SYSTEMS NETWORK BACKBONE CONDUIT TO BE LIMITED TO 270° OF BENDS BETWEEN PULL POINTS & ALL 90° BENDS TO BE 36" MINIMUM RADIUS.
11. ELECTRICAL CONTRACTOR TO PROVIDE #6 COPPER GROUND AT EACH MDF/IDF ROOM - TO BE LOCATED ADJACENT TO THE SERVICE PROVIDER TERMINATIONS.
12. UNIT TERMINATIONS MUST BE WIRED TO IDF AS INDICATED. PER THIS DESIGN, * SHOULD UNITS BE WIRED TO A DIFFERENT IDF DUE TO FIELD CONDITIONS, EVERBASE CONSULTING SOLUTIONS IS TO BE IMMEDIATELY NOTIFIED AS THIS AFFECTS THE PROVIDERS DESIGN.
13. WIRELESS ACCESS POINTS TO PROVIDE PARTITIONED NETWORK ACCESS FOR PUBLIC & FOR SECURE STAFF ONLY NETWORK ACCESS.
14. BLOCKING REQUIRED AT ALL COMMON AREA TV LOCATIONS.
15. COORDINATE ALL DATA OUTLET LOCATIONS IN PLAN WITH CODE COMPLIANT ELECTRICAL OUTLET LOCATIONS. ELECTRICAL OUTLET LOCATIONS ARE PRIORITY IN ANY PERCEIVED CONFLICTS OF DATA OUTLETS IN PLAN.



1 LEVEL 1 - DATA/COMM LAYOUT
1/8" = 1'-0"



PROJECT ARCHITECT

TECHNOLOGY CONSULTANT



DENVER | CO
P: 720-930-7775
O: 855-255-5521
WWW.EVERBASECONSULTING.COM

PROJECT INFORMATION

SUNDAR APARTMENTS

DILLON ROAD & SOUTH 122TH STREET
LAFAYETTE, COLORADO

ORIGINAL ISSUANCE: DATE: 06.11.2025

IPC SET

REVISION: DATE: DELTA:

SYSTEM DESIGNED:

SYSTEM REVIEWER: Chaghai

ECS JOB NUMBER: EC-1025

SHEET INFORMATION: SHEET TITLE: LEVEL 1 - DATA/COMM SYSTEM LAYOUT

SHEET NUMBER: TD-101