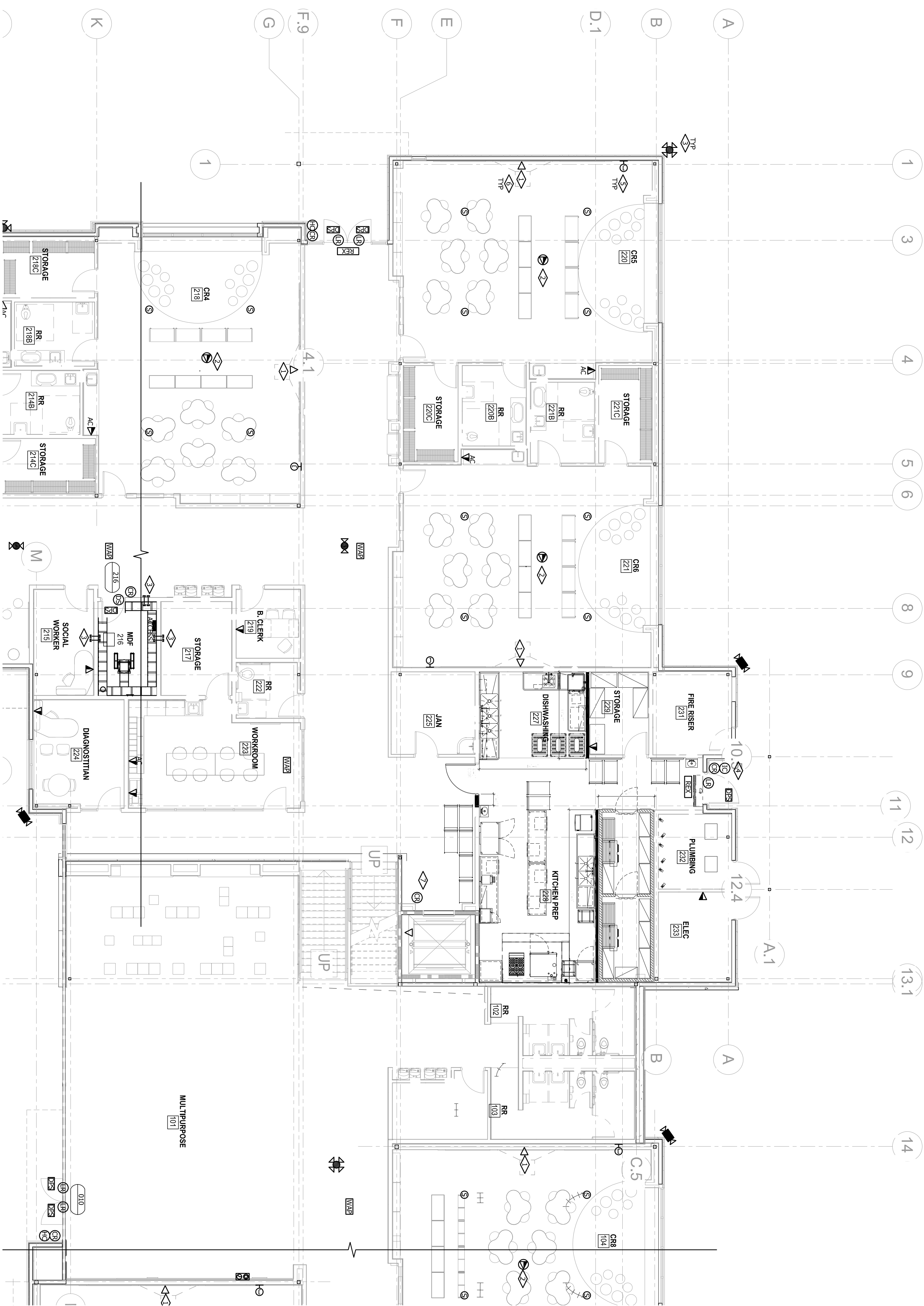
[illegible]



REQ	REQUEST TO EXIT
IN	LATCH RETRACTION
DPS	DOOR POSITION SENSOR
CRD	CARD READER
PN	HANDICAP BUTTON
DOOR	DOOR NUMBER
BUZZER	PUSH-BUTTON BUZZER
LOCK	LOCK-DOWN MECHANISM
BOX	WALL JUNCTION BOX
CAMERA	WALL/DOOR MOUNT 2-POSITION CAMERA
CEILING	CEILING MOUNT 2-POSITION
DATA	CEILING DATA
DATA	WALL SINGLE DATA
DATA	WALL DUAL DATA
SPK	IN-CEILING SPEAKER
ACCESS	WIRELESS ACCESS POINT

1. ALL DEVICES SHOWN ARE FOR ROUGH-IN ONLY. COORDINATE DEVICE BOX REQUIREMENTS WITH SPECIAL SYSTEMS CONTRACTOR PRIOR TO ROUGH-IN.
2. ALL PENETRATIONS THROUGH FIRE RATED ASSEMBLIES SHALL BE

4. AND SHEET PILES, DOW CORREL 3-648 SILICON ERT FOAM,
5. COORDINATE LOCATION OF WALL CONNECTIONS WITH CABLEWAY AND OTHER WALL DISTRIBUTIONS, CONSIDERING CEILING MOUNTED DEVICES WITH CEILING DISCREPANCIES.
6. PLANNING RAIL GROUNDING, ARE WE PROVIDED ANY ACCESSIBLE JOINTS, AND IF NOT, CAN WE LOCATE THEM IN AN ACCESSIBLE LOCATION? PHASE 1, ALL CABLEWAYS MUST BE IN MINIMUM 3" AIR PER CABLE, THERE IS NOT POSSIBLE TO CONCEAL IN WALLS OR CEILING SPACES.
5. ALL DEVICES ARE TO BE FLUSH MOUNTED AND WIRE AND CONDUIT TO BE CONCEALED INSIDE WALL SPACE.
6. COORDINATE WITH MECHANICAL CONTRACTOR FOR DDC
6. COORDINATE WITH MECHANICAL CONTRACTOR WITH MECHANICAL CONTRACTOR, WE ARE TO BE COORDINATED WITH MECHANICAL CONTRACTOR, TO BE IN A PERSONAL DATA MANNER.
8. ALL WIRELESS ACCESS POINT (WAP) DATA DEVICES TO BE CAT 6, ALL OTHERS TO BE CAT 6

1. PROVIDE DATA AT PROJECTOR. COORDINATE EXACT LOCATION AND MONITORING EFFORTS WITH ADOPTED COASTLINE

- [illegible]

DRAWING DESCRIPTION:

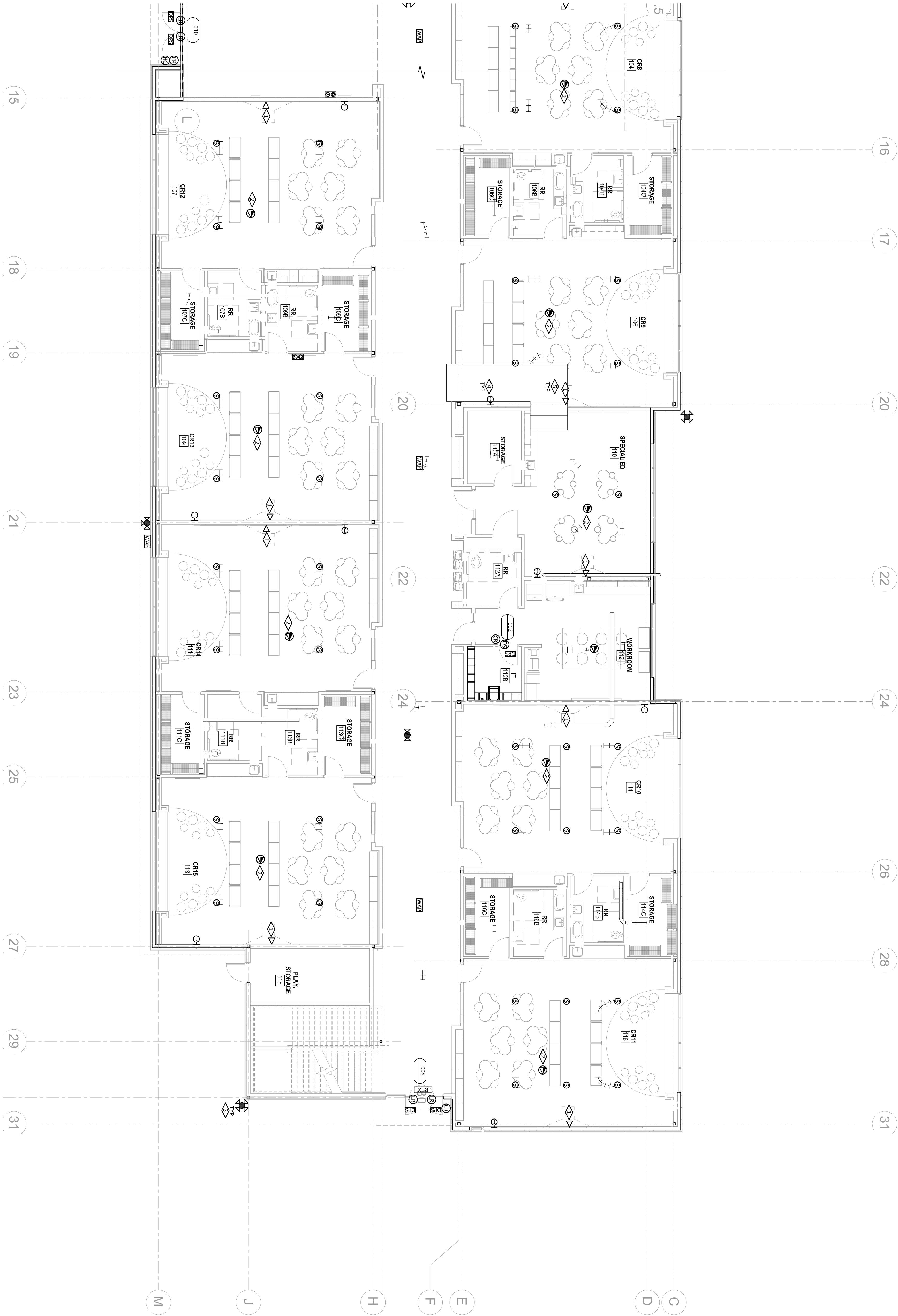
SPECIAL SYSTEMS
FIRST FLOOR AREA B

	INIT.	DATE
DRAWN BY:	JNM	12/13/2023
DESIGN BY:	JNM	12/13/2023
CHECK BY:	JNM	12/13/2023
DRAWING NO:	REVISION:	
T101A	DD	



NETWORK CABLING, INC.
3100 LA PLATA HWY, FARMINGTON NM. 505.598.5054

PRELIMINARY
NOT FOR
CONSTRUCTION
DATE: 4/23/2024



SYMBOL LEGEND

- REQUEST TO EXIT
- LANA REFLECTION
- DOOR POSITION SENSOR
- CARD READER
- HANDICAP BUTTON
- DOOR NUMBER
- PUSH-BUTTON Buzzer
- LOCK-DOWN KEYPAD
- WALL JUNCTION BOX
- WALL/MOUNT 2-POSITION CAMERA
- CEILING MOUNT 2-POSITION
- CEILING DATA
- WALL SINGLE DATA
- WALL DUAL DATA
- IN-CEILING SPEAKER
- WIRELESS ACCESS POINT

GENERAL NOTES

- ALL DEVICES SHOWN ARE FOR ROUGH-IN ONLY. COORDINATE DEVICE EX REQ. REQUIREMENTS WITH SPECIAL SYSTEMS CONTRACTOR. PROVIDE EXACT LOCATION AND MOUNTING HEIGHT WITH ARCHITECT/OWNER.
- ALL PENETRATIONS THROUGH FIRE RATED ASSEMBLIES SHALL BE SEALED WITH FIRE STOPPING, IE 3M BRAND CALULX, WATLY STOP AND SHEET PILES, DOOR GASKING, 3-608 SILICONE RTV FOAM.
- CABINETRY AND OTHER WALL OBSTRUCTIONS. COORDINATE CEILING MOUNTED DEVICES WITH CEILING OBSTRUCTIONS.
- REINFORCED CEILING MAY BE RUN EXPOSED ABOVE ACCESSIBLE CONDUIT WHERE IT IS NOT POSSIBLE TO CONCEAL IN WALLS OR CONDUIT WHERE IT IS NOT POSSIBLE TO CONCEAL IN WALLS OR 3-608 SILICONE RTV FOAM.
- ALL SERVICES ARE TO BE FINISH WORK/IN/PAINT AND CONDUIT IT TO BE CONCEALED INSIDE WALL SPACE.
- COORDINATE WITH MECHANICAL CONTRACTOR FOR DDC.
- ALL DEVICES ARE TO BE COORDINATED WITH MECHANICAL CONTRACTOR FOR DDC.
- CONDUIT ROUTING AND EQUIPMENT INSTALLATION OF 1-1/2" DIA. CONDUIT TO BE IN A WORKMAN-LIKE MANNER.
- ALL WIRELESS ACCESS POINT (WAP) DATA DROPS TO BE EXACT FA. ALL OTHERS TO BE ON 0.

FLAG NOTES

- PROVIDE DATA AT PROJECTOR. COORDINATE EXACT LOCATION AND MOUNTING HEIGHT WITH ARCHITECT/OWNER.
- CEILING SPACE.
- PROVIDE 3/4" EMT CONDUIT ALONG THROUGH WALL TO OPENING. PROVIDE 3/4" EMT CONDUIT THROUGH WALL TO OPENING. PROVIDE 3/4" EMT CONDUIT THROUGH WALL TO OPENING. PROVIDE 3/4" EMT CONDUIT THROUGH WALL TO OPENING. PROVIDE 3/4" EMT CONDUIT THROUGH WALL TO OPENING.
- PROVIDE 1" EMT TO ABOVE ACCESSIBLE CEILING SPACE FOR A BOX. PROVIDE 1" EMT TO ABOVE ACCESSIBLE CEILING SPACE FOR A BOX. PROVIDE 1" EMT TO ABOVE ACCESSIBLE CEILING SPACE FOR A BOX. PROVIDE 1" EMT TO ABOVE ACCESSIBLE CEILING SPACE FOR A BOX.
- PROVIDE 4" SQUARE BOX WITH 1" EMT CONDUIT TO ABOVE ACCESSIBLE CEILING SPACE FOR A BOX. PROVIDE 4" SQUARE BOX WITH 1" EMT CONDUIT TO ABOVE ACCESSIBLE CEILING SPACE FOR A BOX. PROVIDE 4" SQUARE BOX WITH 1" EMT CONDUIT TO ABOVE ACCESSIBLE CEILING SPACE FOR A BOX. PROVIDE 4" SQUARE BOX WITH 1" EMT CONDUIT TO ABOVE ACCESSIBLE CEILING SPACE FOR A BOX.

FARMINGTON MUNICIPAL SCHOOLS
PRESCHOOL ACADEMY
5840 FORTUNA DR.
FARMINGTON, NM 87401

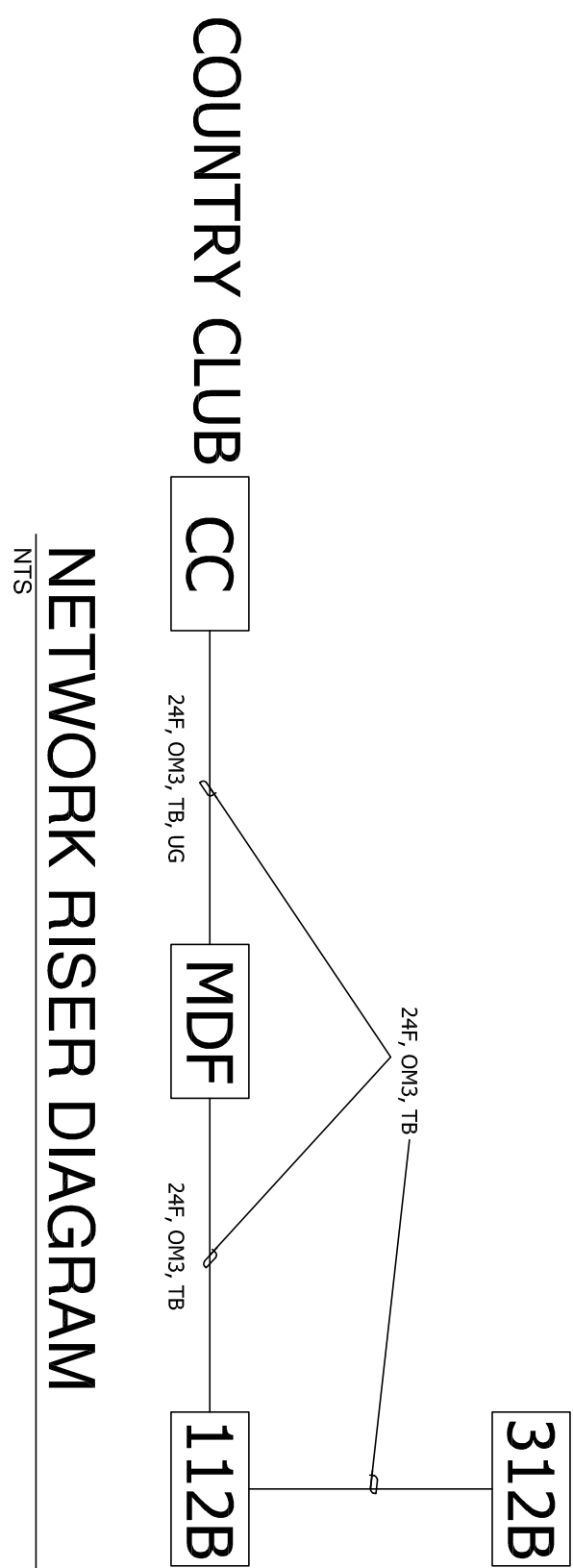
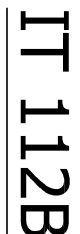
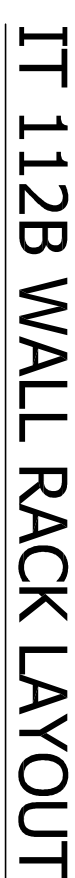
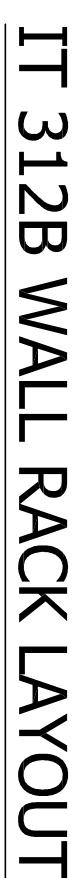
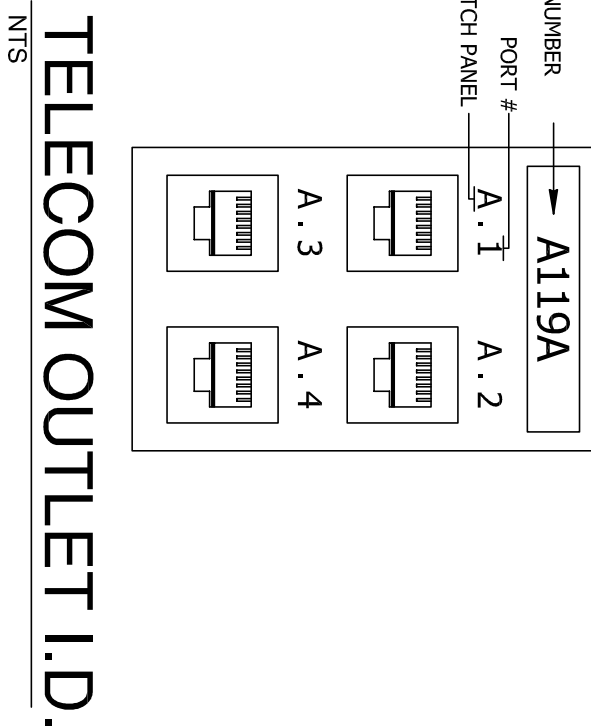
DRAWING DESCRIPTION:
SPECIAL SYSTEMS
1ST FLOOR AREA C

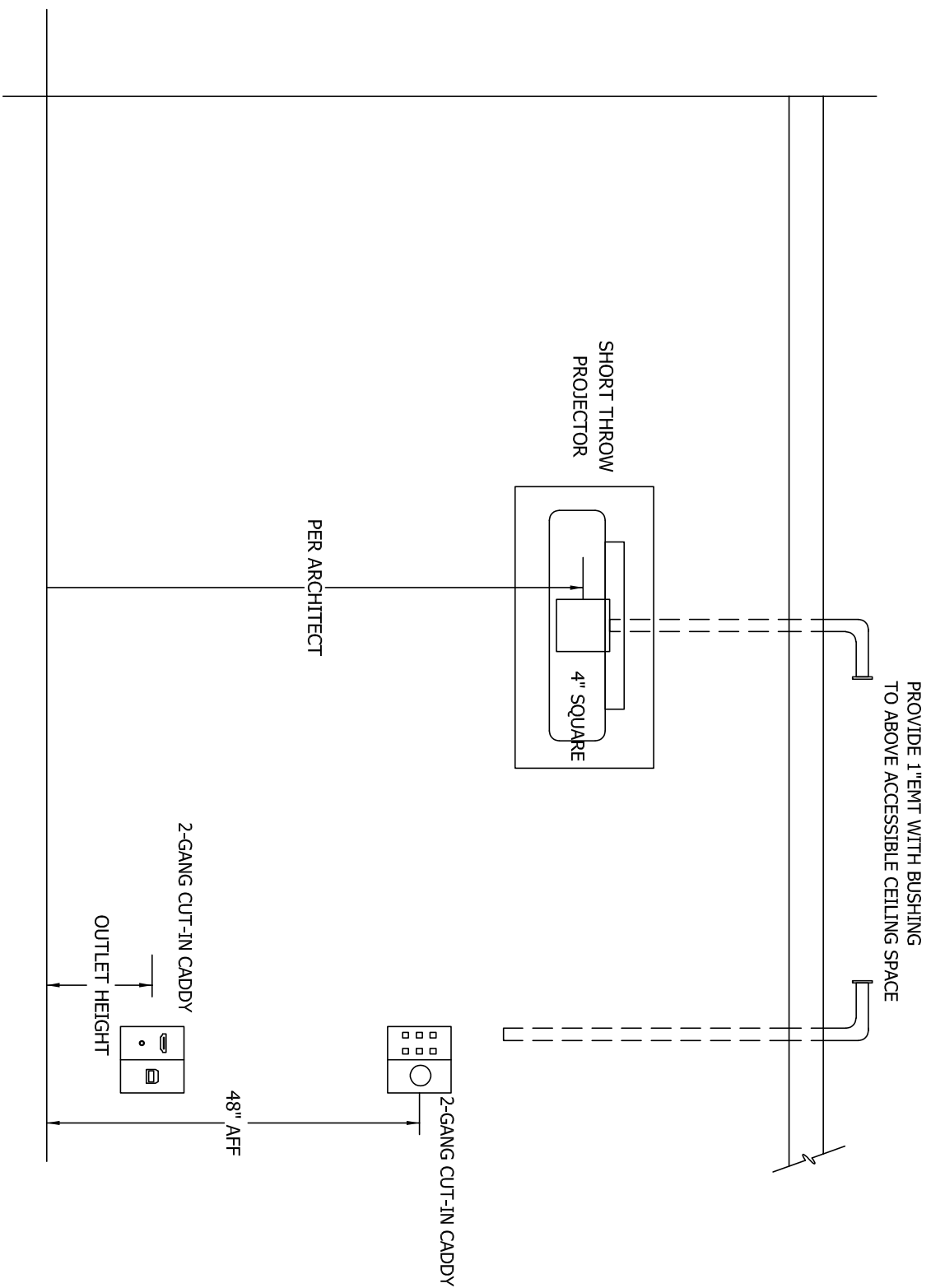
INIT.	DATE
DRAWN BY: JNM	12/13/2023
DESIGN BY: JNM	12/13/2023
CHECK BY: JNM	12/13/2023
DRAWING NO:	DD

NETWORK CABLING, INC.
3100 LA PLATA HWY, FARMINGTON NM. 505.598.5054

PRELIMINARY
NOT FOR
CONSTRUCTION
DATE: 4/23/2024

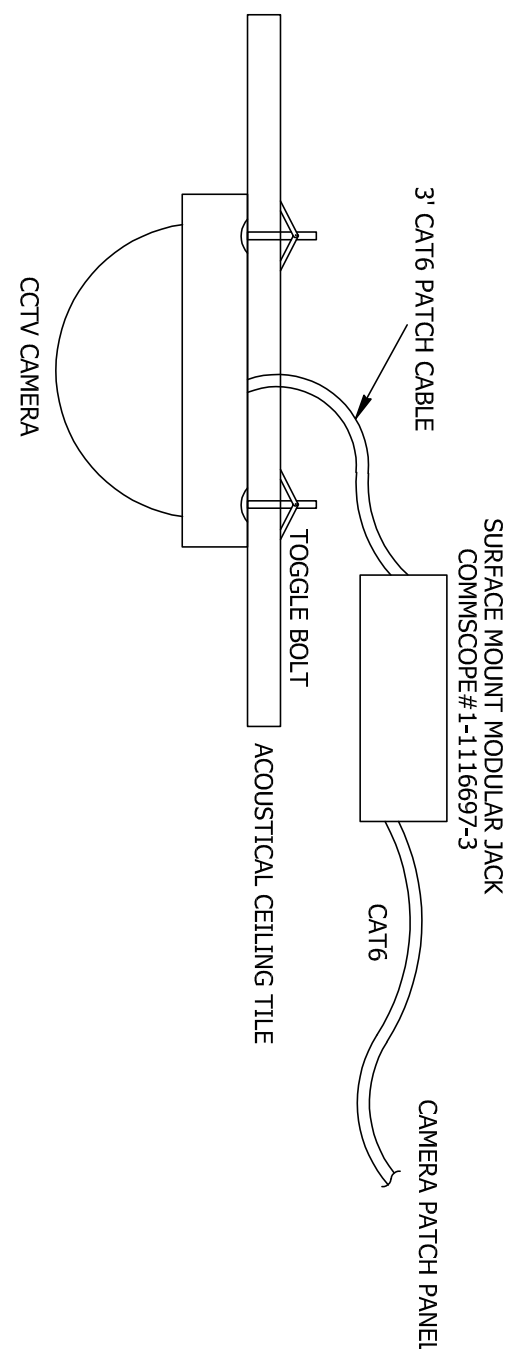






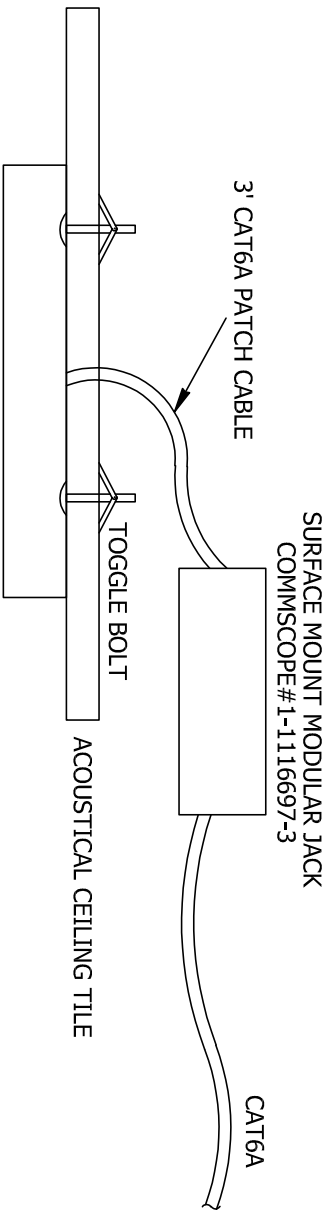
TYPICAL TEACHING WALL

NTS



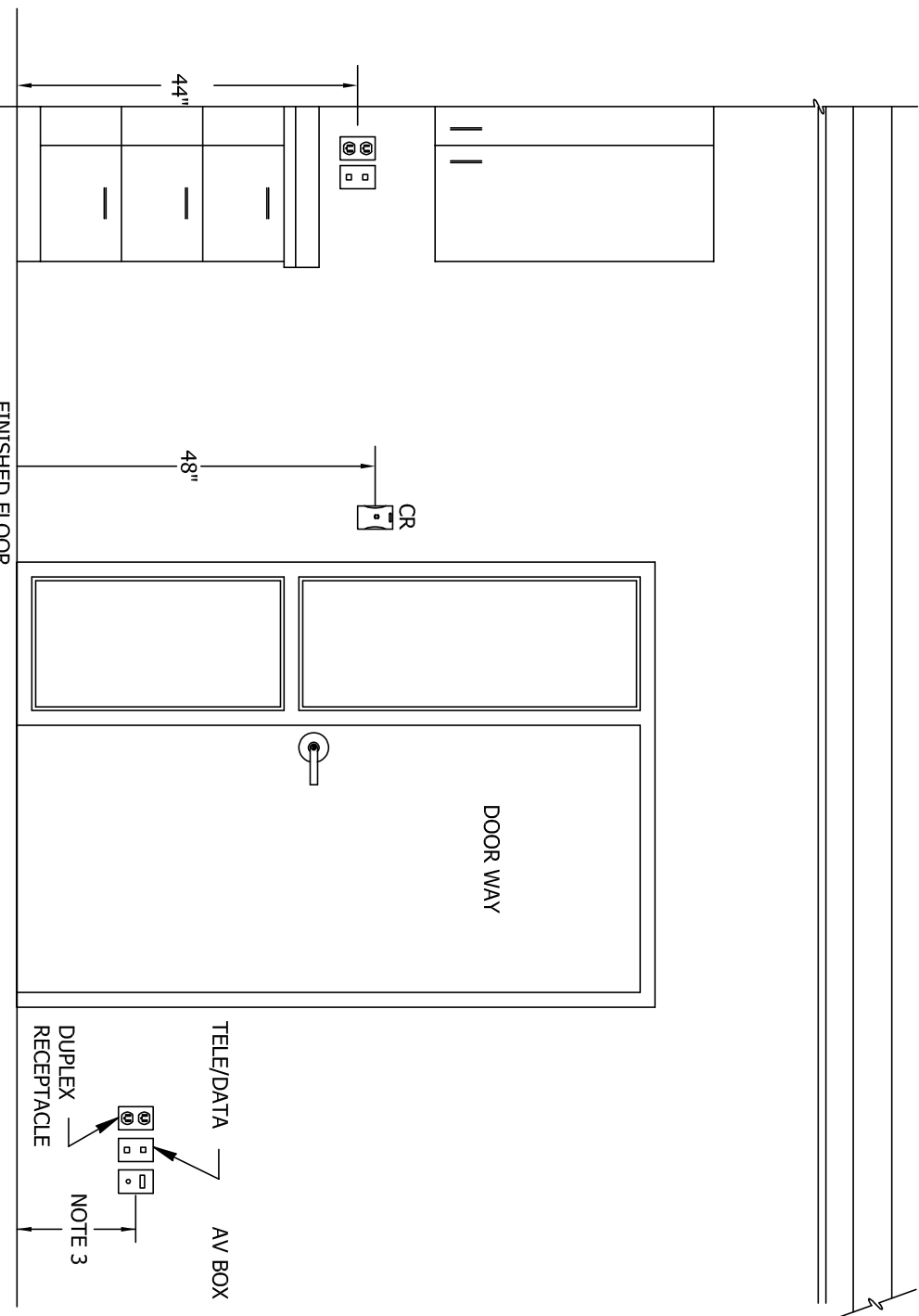
CAMERA MOUNTING

NTS



WAP CEILING MOUNT

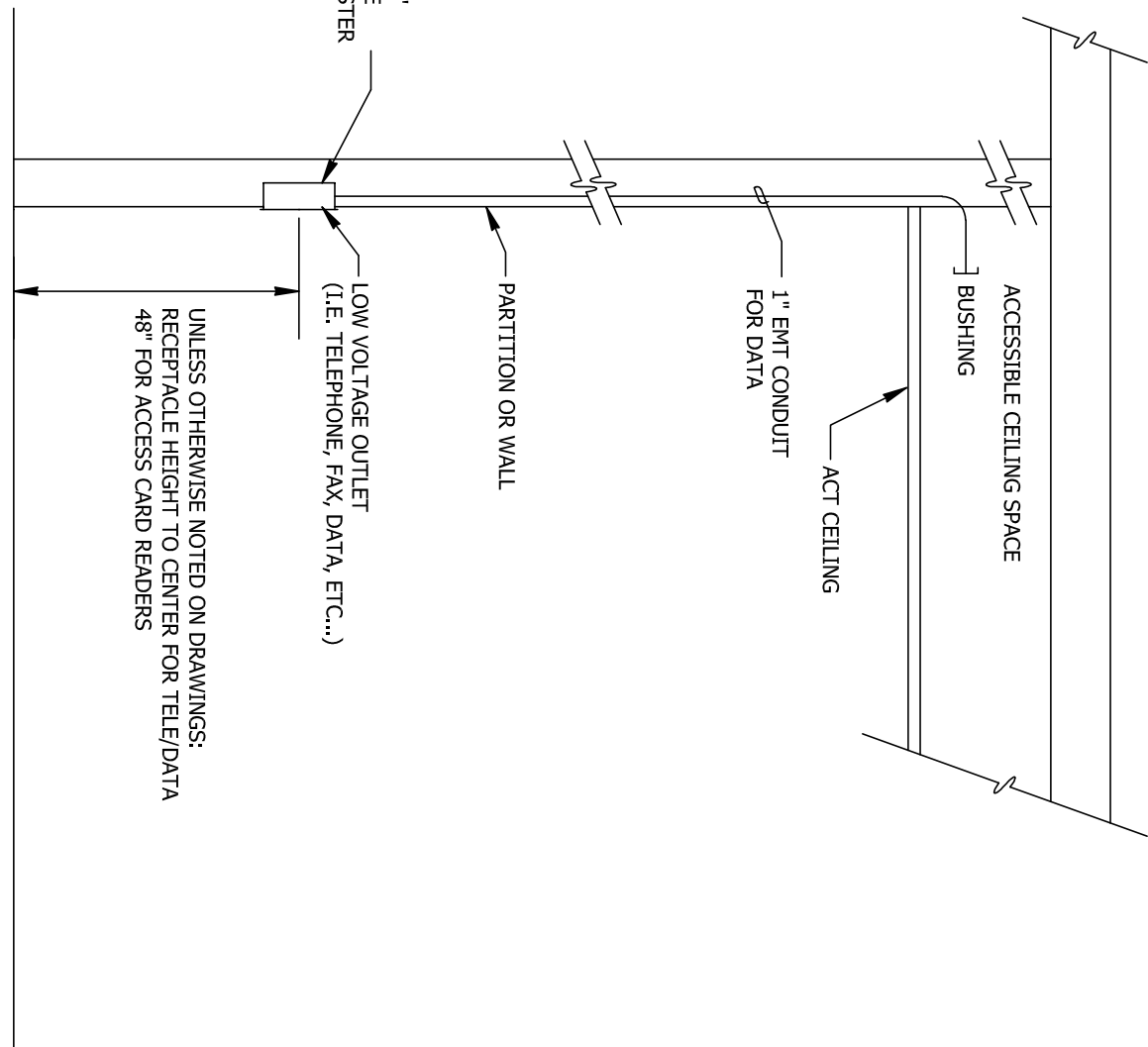
NTS



- NOTES:
1. ALL DEVICES SHOWN ON THIS DETAIL ARE FOR REFERENCES OF MOUNTING HEIGHTS ONLY. THE ELECTRICAL CONTRACTOR SHALL PROVIDE ROUGH-IN HEIGHTS OF THE DEVICES AS REQUIRED FOR PROPER MOUNTING OF THE DEVICES.
 2. ALL DEVICES SHOWN ON THIS DETAIL ARE FOR REFERENCES ONLY. THE ELECTRICAL CONTRACTOR SHALL PROVIDE ROUGH-IN HEIGHTS OF THE DEVICES AS REQUIRED FOR PROPER MOUNTING OF THE DEVICES.
 3. MATCH MOUNTING HEIGHT OF DUKES KEEP/PLACE COORDINATE WITH ELECTRICAL DRAWINGS

DEVICE MOUNTING HEIGHT

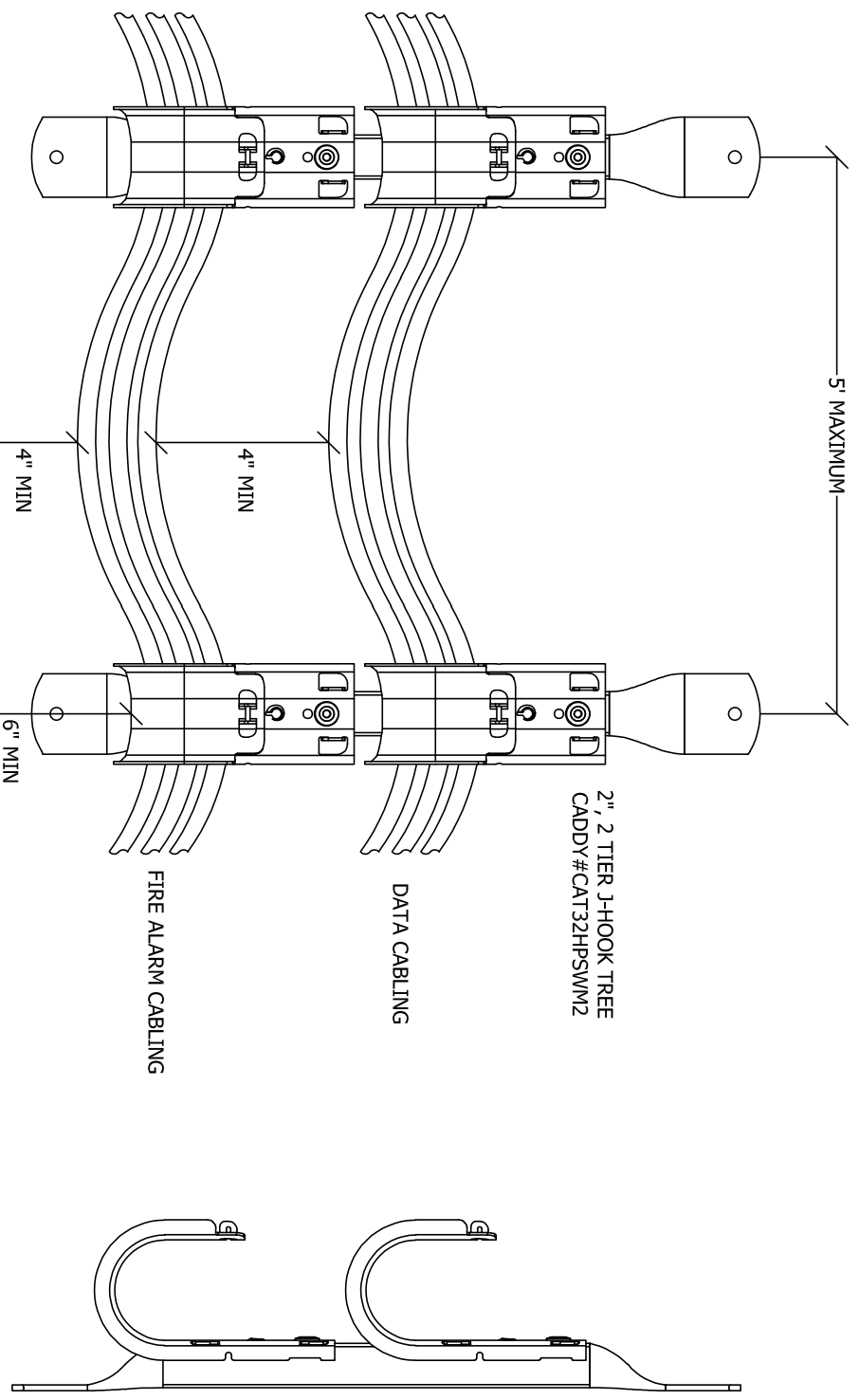
NTS



- NOTES:
1. LOW VOLTAGE CABLE IS TO BE RERUN RATED.
 2. CABLE INSTALLED ABOVE NON-ACCESSIBLE CEILINGS AND WHEN EXPOSED SHALL BE IN CONDUIT. CEILING INSTALLATION SHALL BE IN CONDUIT. CEILING INSTALLATION SHALL BE IN CONDUIT. CEILING INSTALLATION SHALL BE IN CONDUIT.
 3. DO NOT PUT GSE FIBER AND POWER CONDUCTORS IN SAME HOOK.

LOW VOLTAGE OUTLET DETAIL

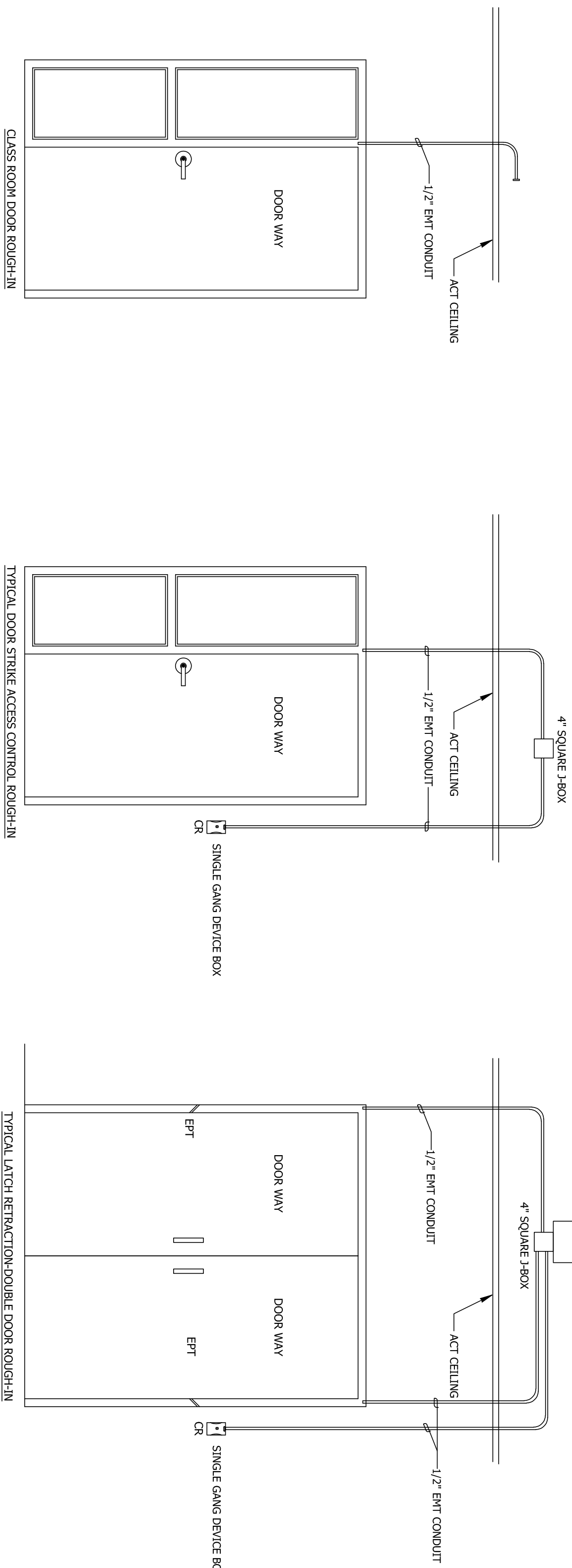
NTS



- NOTES:
1. PROVIDE 'J-HOOK MANAGEMENT' ABOVE ACCESSIBLE CEILING SPACES. ALL CABLING TO BE RERUN RATED.
 2. DO NOT PUT GSE FIBER AND POWER CONDUCTORS IN SAME HOOK.

J-HOOK WIRE MANAGEMENT

NTS



ACCESS CONTROL ROUGH-IN DETAIL

NTS

EXTERIOR CAMERA MOUNT

NTS

INIT.	DATE
DRAWN BY: JNM	12/13/2023
DESIGN BY: JNM	12/13/2023
CHECK BY: JNM	12/13/2023
DRAWING NO:	REVISION:
T500	DD

DRAWING DESCRIPTION:
**SPECIAL SYSTEMS
1ST FLOOR AREA C**

**FARMINGTON MUNICIPAL SCHOOLS
PRESCHOOL ACADEMY**
5840 FORTUNA DR.
FARMINGTON, NM 87401