

○ = Dual Data Drop (Cat6 Cable)  
■ = TV Cable Run (Cat6 and Coaxial Cable) - 5 Ft. from floor  
■ = Card Reader Run (4722B-AMZ-1CR Composite Cable)

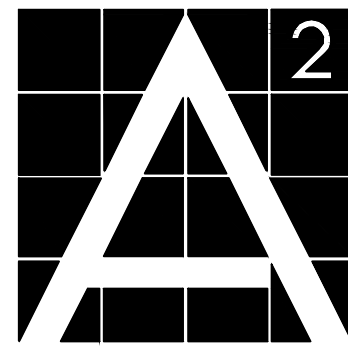


FURNITURE, TELEPHONE AND ELECTRICAL LEGEND

	NEW WALL-MOUNTED DUPLEX ELECTRICAL OUTLET
	NEW WALL-MOUNTED QUADRUPLUX ELECTRICAL OUTLET
	NEW WALL-MOUNTED TELE/DATA J-BOX, WITH DRAG LINE ONLY
	NEW WALL-MOUNTED TELE/DATA J-BOX WITH DRAG LINE ONLY FOR TV
	NEW WALL-MOUNTED DUPLEX OUTLET WITH GROUND FAULT INTERRUPTER
	NEW WALL-MOUNTED SEPARATE CIRCUIT DUPLEX ELECTRICAL OUTLET
	NEW WALL-MOUNTED DEDICATED CIRCUIT DUPLEX ELECTRICAL OUTLET
	NEW POWER WHIP TO FEED WORKSTATIONS / FURNITURE SYSTEM. "F" - INDICATES NUMBER OF WORKSTATIONS SERVED. COORDINATE WITH TENANT FURNITURE SPECS FOR POWER REQUIREMENTS. GC IS TO PROVIDE DRAG LINE ONLY FOR ALL TELE/DATA. EXACT LOCATION TO BE COORDINATED IN FIELD WITH TENANT & TENANT FURNITURE VENDOR
	NEW POWER POLE TO FEED WORKSTATIONS / FURNITURE SYSTEM. "F" - INDICATES NUMBER OF WORKSTATIONS SERVED. COORDINATE WITH TENANT FURNITURE SPECS FOR POWER REQUIREMENTS. GC IS TO PROVIDE DRAG LINES ONLY FOR ALL TELE/DATA. EXACT LOCATION TO BE COORDINATED IN FIELD WITH TENANT & TENANT FURNITURE VENDOR
	NEW TENANT FURNITURE POWER WITH (1) QUAD ELECTRICAL OUTLET AND DATA. EXACT REQUIREMENTS TO BE COORDINATED WITH TENANT FURNITURE SPECS AND VENDOR. GC IS TO PROVIDE PULL STRING FOR ALL TELE/DATA
	NEW TENANT WORKSTATION POWER WITH (2) DUPLEX ELECTRICAL OUTLETS & DATA. EXACT REQUIREMENTS TO BE COORDINATED WITH TENANT FURNITURE SPECS AND VENDOR. GC IS TO PROVIDE PULL STRING FOR ALL TELE/DATA
	NEW TENANT FURNITURE POWER WITH (2) DUPLEX ELECTRICAL OUTLETS & DATA OUTLETS. EXACT REQUIREMENTS TO BE COORDINATED WITH TENANT FURNITURE SPECS AND VENDOR. GC IS TO PROVIDE DRAG LINE FOR ALL TELE/DATA. GC IS TO RUN POWER & DRAG LINES FOR DATA VIA NEW SLIM RACEWAY BY LEGRAND OR EQUAL TO AVOID TRIPPING HAZARD. COORDINATE RUN IN FIELD WITH TENANT & TENANT FURNITURE VENDOR

- NOTES
- GENERAL NOTES:
- ALL OUTLETS TO BE LAID OUT IN FIELD FOR APPROVAL BY TENANT PRIOR TO INSTALLATION
  - ALL FURNITURE IS TO BE FURNISHED AND INSTALLED BY TENANT. GC IS TO MAKE ELECTRICAL CONNECTION TO WORKSTATIONS
  - COORDINATE ALL FURNITURE POWER REQUIREMENTS WITH TENANT SPECS
  - ALL BASE BUILDING WALLS WITH POWER AND/OR DATA ARE TO BE FURRED OUT AS REQUIRED TO CONCEAL ALL CONDUITS. THERE ARE TO BE NO EXPOSED CONDUITS
- ① GC IS TO FURR OUT WALL AS REQUIRED SO TELECOM, ELECTRICAL OUTLETS, AND FIRE DEVICES ARE FLUSH AND CONDUITS HIDDEN ESPECIALLY ON BASE BUILDING WALLS
- ② GC IS TO COORDINATE WITH TENANT & TENANT FURNITURE VENDOR TO CONFIRM FURNITURE IS POWERED AND EXACT POWER REQUIREMENTS. IF NOT POWERED, GC IS TO RUN POWER IN NEW SLIM RACEWAY BY LEGRAND OR EQUAL TO AVOID TRIPPING HAZARD TO NEW SURFACE MOUNTED FLOOR BOX. GC IS TO PROVIDE DRAG LINES ONLY FOR ALL TELE/DATA

1 3RD FL FTE PLAN  
Scale: 1/8" = 1'-0"



A-Squared  
Architecture

1201 BROADWAY, STUDIO 304  
NEW YORK, NY 10001

ISSUED

ISSUED FOR DD REVIEW 10.11.22  
ISSUED FOR REVIEW 10.19.22  
ISSUED FOR PAGE-TURN 10.28.22  
ISSUED FOR FILING 11.11.22  
ISSUED PER DOB COMMENTS 5.02.23  
RE-ISSUED PER DOB COMMENTS 5.26.23

THE CITY OF YONKERS  
20 SOUTH BROADWAY  
YONKERS, NY 10701

SEAL



3RD FL FTE PLAN

22118

DRAWN BY : RR  
CHECKED BY : AT

A-408.00

OF x



= Dual Data Drop (Cat6 Cable)

C

= TV Cable Run (Cat6 and Coaxial Cable) - 5 Ft from floor

TV-D

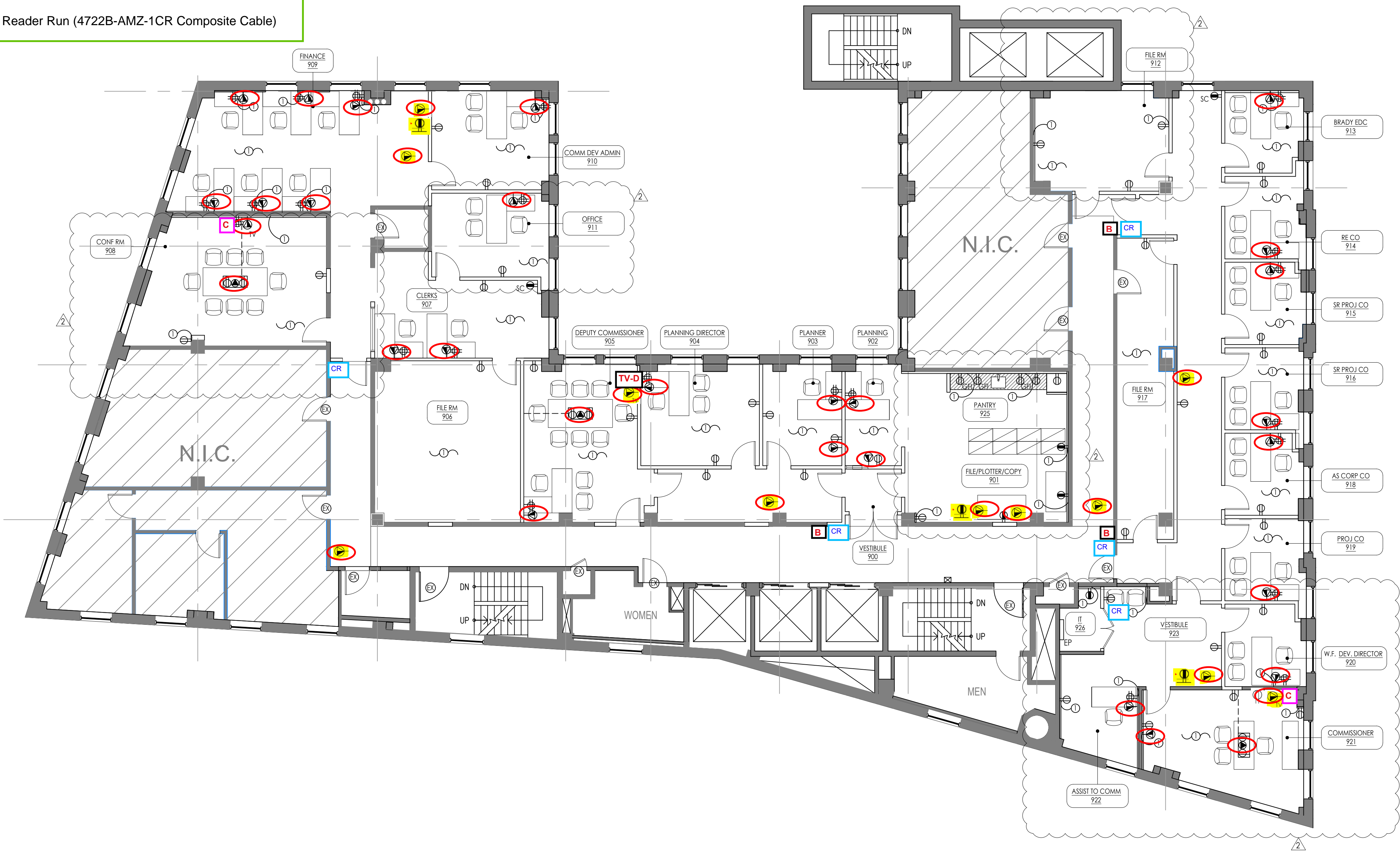
=TV with data Only (Cat6 Cable)- 5 Ft from floor

B

= Intercom Run (Cat6 Cable)

CR

= Card Reader Run (4722B-AMZ-1CR Composite Cable)



FURNITURE, TELEPHONE AND ELECTRICAL LEGEND

	NEW WALL-MOUNTED DUPLEX ELECTRICAL OUTLET
	NEW WALL-MOUNTED QUADRUPLUX ELECTRICAL OUTLET
	NEW WALL-MOUNTED TELE/DATA J-BOX, WITH DRAG LINE ONLY
	NEW WALL-MOUNTED TELE/DATA J-BOX WITH DRAG LINE ONLY FOR TV
	NEW WALL-MOUNTED DUPLEX OUTLET WITH GROUND FAULT INTERRUPTER
	NEW WALL-MOUNTED SEPARATE CIRCUIT DUPLEX ELECTRICAL OUTLET
	NEW WALL-MOUNTED DEDICATED CIRCUIT DUPLEX ELECTRICAL OUTLET
	NEW POWER WHIP TO FEED WORKSTATIONS / FURNITURE SYSTEM. '#' - INDICATES NUMBER OF WORKSTATIONS SERVED. COORDINATE WITH TENANT FURNITURE SPECS FOR POWER REQUIREMENTS. GC IS TO PROVIDE DRAG LINE ONLY FOR ALL TELE/DATA. EXACT LOCATION TO BE COORDINATED IN FIELD WITH TENANT & TENANT FURNITURE VENDOR
	NEW POWER POLE TO FEED WORKSTATIONS / FURNITURE SYSTEM. '#' - INDICATES NUMBER OF WORKSTATIONS SERVED. COORDINATE WITH TENANT FURNITURE SPECS FOR POWER REQUIREMENTS. GC IS TO PROVIDE DRAG LINES ONLY FOR ALL TELE/DATA. EXACT LOCATION TO BE COORDINATED IN FIELD WITH TENANT & TENANT FURNITURE VENDOR
	NEW TENANT FURNITURE POWER WITH (1) QUAD ELECTRICAL OUTLET AND DATA. EXACT REQUIREMENTS TO BE COORDINATED WITH TENANT FURNITURE SPECS AND VENDOR. GC IS TO PROVIDE PULL STRING FOR ALL TELE/DATA
	NEW TENANT WORKSTATION POWER WITH (2) DUPLEX ELECTRICAL OUTLETS & DATA. EXACT REQUIREMENTS TO BE COORDINATED WITH TENANT FURNITURE SPECS AND VENDOR. GC IS TO PROVIDE PULL STRING FOR ALL TELE/DATA
	NEW TENANT FURNITURE POWER WITH (2) DUPLEX ELECTRICAL OUTLETS & DATA OUTLETS. EXACT REQUIREMENTS TO BE COORDINATED WITH TENANT FURNITURE SPECS AND VENDOR. GC IS TO PROVIDE DRAG LINE FOR ALL TELE/DATA. GC IS TO RUN POWER & DRAG LINES FOR DATA VIA NEW SLIM RACEWAY BY LEGRAND OR EQUAL TO AVOID TRIPPING HAZARD. COORDINATE RUN IN FIELD WITH TENANT & TENANT FURNITURE VENDOR
NOTES	
GENERAL NOTES: <ul style="list-style-type: none"><li>ALL OUTLETS TO BE LAID OUT IN FIELD FOR APPROVAL BY TENANT PRIOR TO INSTALLATION</li><li>ALL FURNITURE IS TO BE FURNISHED AND INSTALLED BY TENANT. GC IS TO MAKE ELECTRICAL CONNECTION TO WORKSTATIONS</li><li>COORDINATE ALL FURNITURE POWER REQUIREMENTS WITH TENANT SPECS</li><li>ALL BASE BUILDING WALLS WITH POWER AND/OR DATA ARE TO BE FURRED OUT AS REQUIRED TO CONCEAL ALL CONDUITS. THERE ARE TO BE NO EXPOSED CONDUITS</li></ul>	
①	GC IS TO FURR OUT WALL AS REQUIRED SO TELECOM, ELECTRICAL OUTLETS, AND FIRE DEVICES ARE FLUSH AND CONDUITS HIDDEN ESPECIALLY ON BASE BUILDING WALLS
②	GC IS TO COORDINATE WITH TENANT & TENANT FURNITURE VENDOR TO CONFIRM FURNITURE IS POWERED AND EXACT POWER REQUIREMENTS. IF NOT POWERED, GC IS TO RUN POWER IN NEW SLIM RACEWAY BY LEGRAND OR EQUAL TO AVOID TRIPPING HAZARD TO NEW SURFACE MOUNTED FLOOR BOX. GC IS TO PROVIDE DRAG LINES ONLY FOR ALL TELE/DATA

1

9TH FL FTE PLAN

Scale: 1/8" = 1'-0"

2

A

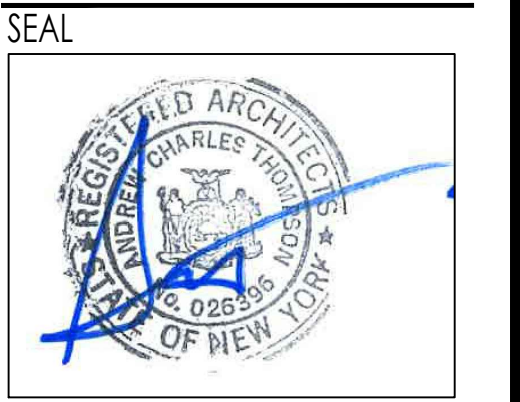
A-Squared  
Architecture

1201 BROADWAY, STUDIO 304  
NEW YORK, NY 10001

ISSUED

ISSUED FOR DD REVIEW	10.11.22
ISSUED FOR REVIEW	10.19.22
ISSUED FOR PAGE-TURN	10.28.22
ISSUED FOR FILING	11.11.22
ISSUED PER DOB COMMENTS	5.02.23
RE-ISSUED PER DOB COMMENTS	5.26.23

THE CITY OF YONKERS  
20 SOUTH BROADWAY  
YONKERS, NY 10701



9TH FL FTE PLAN

22118

DRAWN BY : RR

CHECKED BY : AT





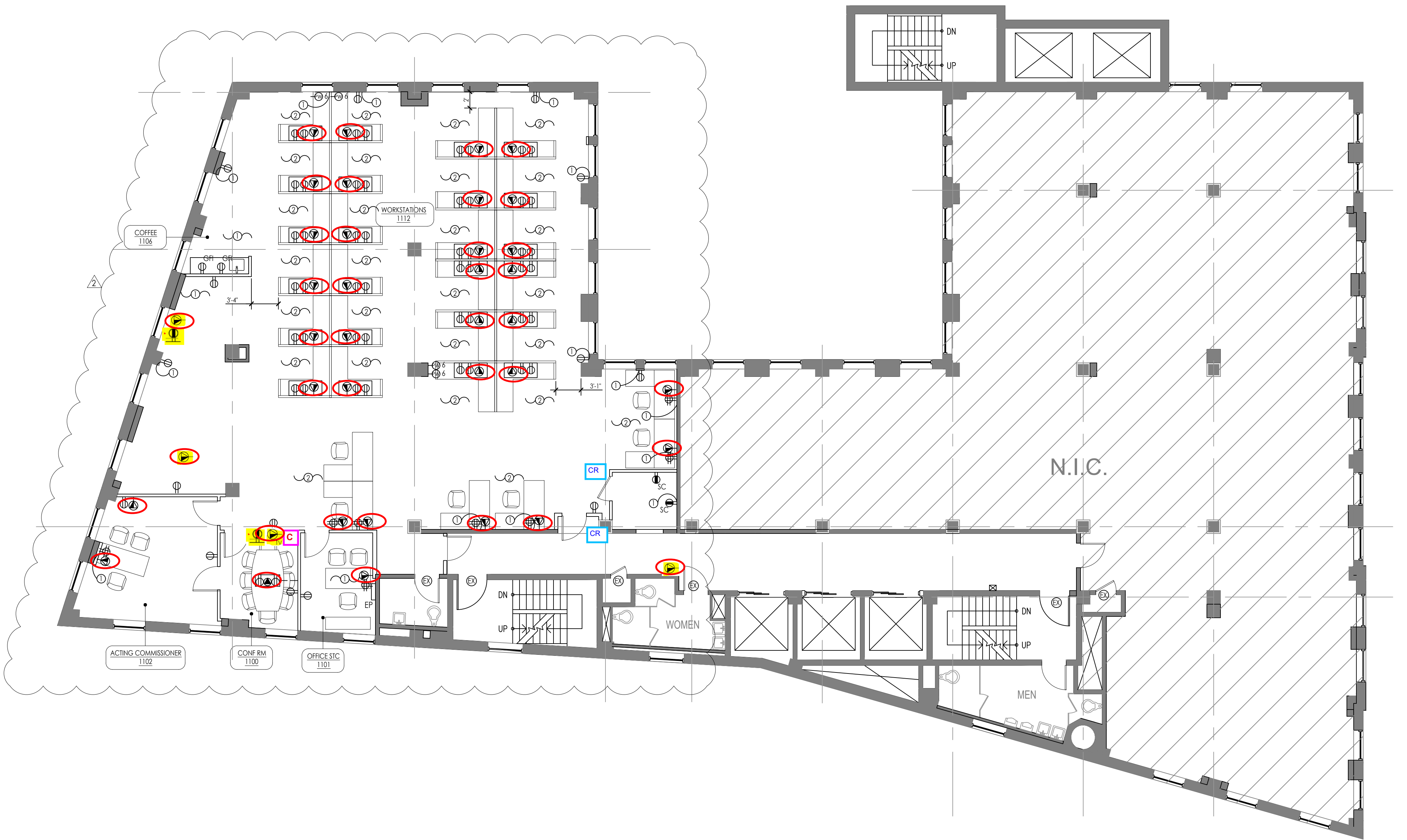


= Dual Data Drop (Cat6 Cable)

= TV Cable Run (Cat6 and Coaxial Cable) - 5 Ft from floor

CR

= Card Reader Run (4722B-AMZ-1CR Composite Cable)



FURNITURE, TELEPHONE AND ELECTRICAL LEGEND	
	NEW WALL-MOUNTED DUPLEX ELECTRICAL OUTLET
	NEW WALL-MOUNTED QUADRUPLUX ELECTRICAL OUTLET
	NEW WALL-MOUNTED TELE/DATA J-BOX, WITH DRAG LINE ONLY
	NEW WALL-MOUNTED TELE/DATA J-BOX WITH DRAG LINE ONLY FOR TV
	NEW WALL-MOUNTED DUPLEX OUTLET WITH GROUND FAULT INTERRUPTER
	NEW WALL-MOUNTED SEPARATE CIRCUIT DUPLEX ELECTRICAL OUTLET
	NEW WALL-MOUNTED DEDICATED CIRCUIT DUPLEX ELECTRICAL OUTLET
	NEW POWER WHIP TO FEED WORKSTATIONS / FURNITURE SYSTEM. "#" INDICATES NUMBER OF WORKSTATIONS SERVED. COORDINATE WITH TENANT FURNITURE SPECS FOR POWER REQUIREMENTS. GC IS TO PROVIDE DRAG LINE ONLY FOR ALL TELE/DATA. EXACT LOCATION TO BE COORDINATED IN FIELD WITH TENANT & TENANT FURNITURE VENDOR
	NEW POWER POLE TO FEED WORKSTATIONS / FURNITURE SYSTEM. "#" INDICATES NUMBER OF WORKSTATIONS SERVED. COORDINATE WITH TENANT FURNITURE SPECS FOR POWER REQUIREMENTS. GC IS TO PROVIDE DRAG LINES ONLY FOR ALL TELE/DATA. EXACT LOCATION TO BE COORDINATED IN FIELD WITH TENANT & TENANT FURNITURE VENDOR
	NEW TENANT FURNITURE POWER WITH (1) QUAD ELECTRICAL OUTLET AND DATA. EXACT REQUIREMENTS TO BE COORDINATED WITH TENANT FURNITURE SPECS AND VENDOR. GC IS TO PROVIDE PULL STRING FOR ALL TELE/DATA
	NEW TENANT WORKSTATION POWER WITH (2) DUPLEX ELECTRICAL OUTLETS & DATA. EXACT REQUIREMENTS TO BE COORDINATED WITH TENANT FURNITURE SPECS AND VENDOR. GC IS TO PROVIDE PULL STRING FOR ALL TELE/DATA
	NEW TENANT FURNITURE POWER WITH (2) DUPLEX ELECTRICAL OUTLETS & DATA OUTLETS. EXACT REQUIREMENTS TO BE COORDINATED WITH TENANT FURNITURE SPECS AND VENDOR. GC IS TO PROVIDE DRAG LINE FOR ALL TELE/DATA. GC IS TO RUN POWER & DRAG LINES FOR DATA VIA NEW SLIM RACEWAY BY LEGRAND OR EQUAL TO AVOID TRIPPING HAZARD. COORDINATE RUN IN FIELD WITH TENANT & TENANT FURNITURE VENDOR
NOTES	
GENERAL NOTES:	
<ul style="list-style-type: none"><li>ALL OUTLETS TO BE LAID OUT IN FIELD FOR APPROVAL BY TENANT PRIOR TO INSTALLATION</li><li>ALL FURNITURE IS TO BE FURNISHED AND INSTALLED BY TENANT. GC IS TO MAKE ELECTRICAL CONNECTION TO WORKSTATIONS</li><li>COORDINATE ALL FURNITURE POWER REQUIREMENTS WITH TENANT SPECS</li><li>ALL BASE BUILDING WALLS WITH POWER AND/OR DATA ARE TO BE FURRED OUT AS REQUIRED TO CONCEAL ALL CONDUITS. THERE ARE TO BE NO EXPOSED CONDUITS</li></ul>	
①	GC IS TO FURR OUT WALL AS REQUIRED SO TELECOM, ELECTRICAL OUTLETS, AND FIRE DEVICES ARE FLUSH AND CONDUITS HIDDEN ESPECIALLY ON BASE BUILDING WALLS
②	GC IS TO COORDINATE WITH TENANT & TENANT FURNITURE VENDOR TO CONFIRM FURNITURE IS POWERED AND EXACT POWER REQUIREMENTS. IF NOT POWERED, GC IS TO RUN POWER IN NEW SLIM RACEWAY BY LEGRAND OR EQUAL TO AVOID TRIPPING HAZARD TO NEW SURFACE MOUNTED FLOOR BOX. GC IS TO PROVIDE DRAG LINES ONLY FOR ALL TELE/DATA

1

11TH FL FTE PLAN

Scale: 1/8" = 1'-0"

ISSUED

ISSUED FOR DD REVIEW

10.11.22

ISSUED FOR REVIEW

10.19.22

ISSUED FOR PAGE-TURN

10.28.22

ISSUED FOR FILING

11.11.22

ISSUED PER DOB COMMENTS

5.02.23

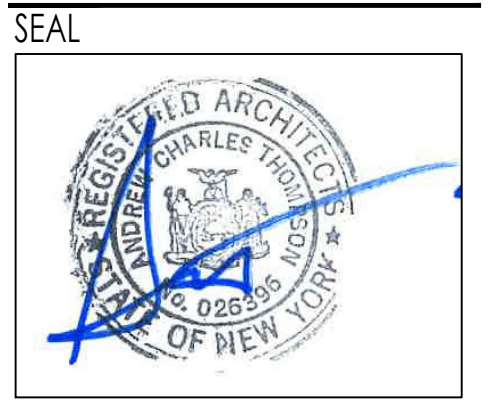
RE-ISSUED PER DOB COMMENTS

5.26.23

THE CITY OF YONKERS

20 SOUTH BROADWAY

YONKERS, NY 10701



11TH FL FTE PLAN

22118

DRAWN BY :

RR

CHECKED BY :

AT

A-411.00