

CROSS COUNTRY MALL 2

8000 MALL WALK #7060  
YONKERS, NY 10704

DESIGN TYPE:  
EXPERIENCE

PROJECT TYPE:  
CORP REMODEL

9956

PROTOTYPE RELEASE: Q# 2024 DCD: XX

ARCHITECT:

RUSSELL M. BAUMANN  
ARCHITECT

1352 E. Ebony Drive  
Chandler, AZ 85286  
tel +1 480 401 3660

email:  
Russell.Baumann@jll.com



1/31/2025

CONSULTING ENGINEER:

Eric M. Aielli, PE  
435 Schenck Ave  
Oakwood, OH 45409  
937.486.4233  
eric@phase3eng.com

#	DESCRIPTION	DATE

DATE: 12.13.2024  
REVIEWED BY: RMB  
SCALE: AS NOTED  
PROJECT NUMBER: TMO24035  
DRAWN BY: CNM

POWER FLOOR PLAN

E101

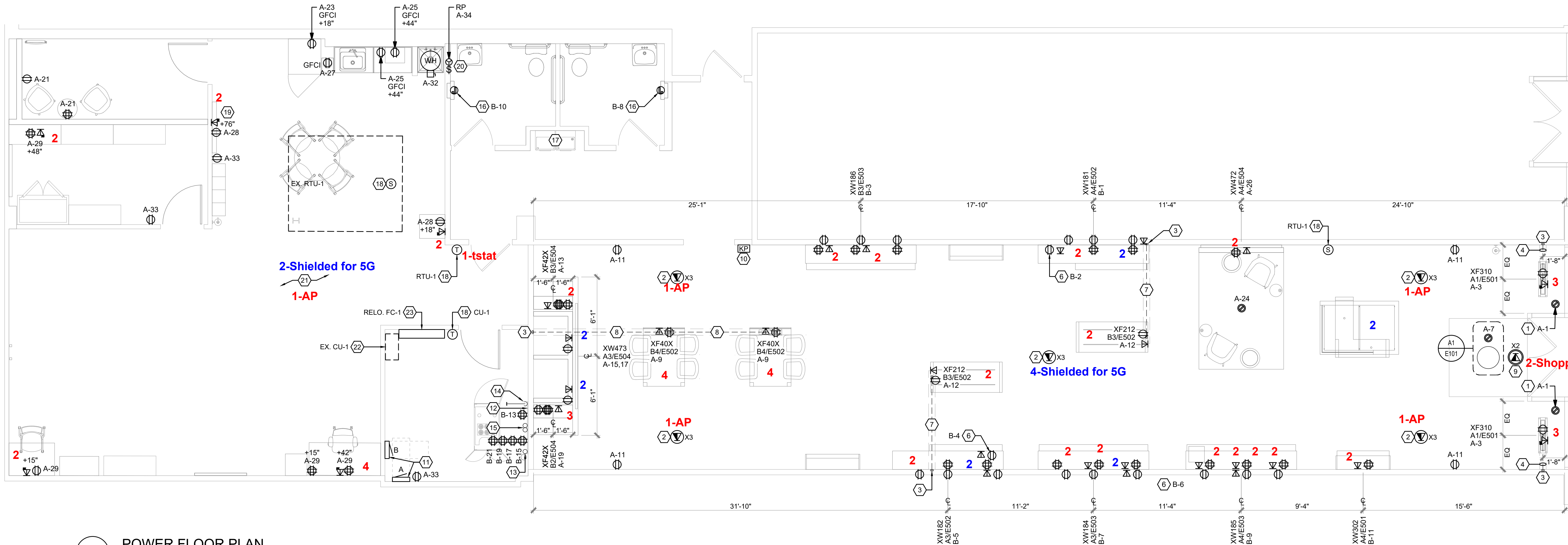
Cat6 Plenum

Single drops = 6 cables  
Dual Drops = 20 = 40 cables  
Triple Drops = 3 = 9 cables  
Quad Drops = 3 = 12 cables  
TOTAL = 67 Cables

Cat6 Shielded

Dual Drops = 4 = 8 cables  
Quad Drops = 1 = 4 cables  
TOTAL = 12 Cables

6 Shielded cables for 5G if not present



B4 POWER FLOOR PLAN  
1/4" = 1'-0"

##	NOTES
1	SHOW WINDOW RECEPTACLE(S). LOCATE MAXIMUM 18" FROM TOP OF WINDOW (NEC 210.62).
2	PROVIDE OVERHEAD AP CABLING ABOVE CEILING W/ 3'-0" MIN. SERVICE LOOP. COORDINATE W/ AP VENDOR FOR EXACT LOCATIONS.
3	PROVIDE POWER CIRCUIT AND LOW VOLTAGE WIRING TO J-BOXES ABOVE CEILING FOR CONDUIT TRENCH TO FLOOR FIXTURES.
4	SAW CUT (TRENCH) TO XF310 OEM TABLE. SEE WIRING DETAILS ON SHEET E501 FOR ADDITIONAL INFORMATION AND RESPONSIBILITIES. • CONDUIT SCHEDULE: (1) 1" GENERAL POWER, (1) 1" DATA
5	NOT USED.
6	PROVIDE DEDICATED CIRCUIT FOR DIGITAL DISPLAY EQUIPMENT. SEE DETAILS ON SHEETS E502 AND E503.
7	SAW CUT (TRENCH) TO XF212 OEM TABLE. SEE WIRING DETAILS ON SHEET E502 FOR ADDITIONAL INFORMATION AND RESPONSIBILITIES. • CONDUIT SCHEDULE: (1) 3/4" GENERAL POWER & (1) 3/4" DATA
8	SAW CUT (TRENCH) TO WORKSHOP TABLE. SEE WIRING DETAILS ON SHEET E502 FOR ADDITIONAL INFORMATION AND RESPONSIBILITIES. • CONDUIT SCHEDULE: (1) 1" GENERAL POWER & (1) 1" DATA TO EACH TABLE
9	PROVIDE DATA BOX ABOVE CEILING FOR SHOPPER TRACKER. OWNER'S VENDOR WILL EXTEND CABLING BACK TO TELEPHONE BACK BOARD.
10	ROUGH IN FOR JCI KEYPAD. MOUNT AT 48" A.F.F.. COORDINATE EXACT LOCATION WITH SECURITY COMPANY.
11	ELECTRICAL EQUIPMENT. SEE ONE LINE DIAGRAM ON SHEET E301. T.G.C. TO PROVIDE ALL NEC CLEARANCES.

##	NOTES
12	PROVIDE TELEPHONE BACKBOARD. SEE ELEVATION ON SHEET E302 FOR DETAILS.
13	PROVIDE 2" CONDUIT AND PULL CORD FROM LANDLORD TELEPHONE BACKBOARD TO THE TENANT TELEPHONE BACKBOARD.
14	PROVIDE (1) 4" CONDUIT FOR JCI CABLES.
15	PROVIDE (2) 4" CONDUIT FOR CAT6 RT CABLES.
16	PROVIDE CONNECTION TO AUTOMATIC HAND DRYER AT 48" A.F.F. (HAND DRYER FURNISHED BY OWNER THROUGH LIGHTING VENDOR). SEE ARCHITECTURAL DETAILS FOR LOCATION.
17	EXISTING ELECTRIC WATER COOLER TO REMAIN. MAINTAIN EXISTING RECEPTACLE AND CIRCUIT.
18	INSTALL OWNER SUPPLIED INTOUCH. ONE MASTER CONTROLLER THERMOSTAT, ZONE TEMPERATURE SENSOR AND DUCT TEMPERATURE SENSOR. MOUNT THERMOSTAT AT 48" A.F.F.. PROVIDE AND PULL CAT5 CABLE FROM E11 THERMOSTAT TO OPEN PORT ON CUSTOMER NETWORK SWITCH. MOUNT ZONE TEMPERATURE SENSOR AT 60" A.F.F. AND WIRE TO THE S2 & S2 RTN. MOUNT DUCT TEMPERATURE SENSOR IN THE MAIN SUPPLY DUCT WITHIN 6 FEET FROM UNIT AND WIRE TO S2 & S2 RTN. CABLE RUNS AND TERMINATIONS BY MC/GC (CABLE PULL).
19	REFER TO MONITOR MOUNTING DETAILS ON ARCHITECTURAL DRAWINGS.
20	PROVIDE MOTOR RATED SWITCH FOR RECIRCULATION PUMP DISCONNECT. CONNECT TO CIRCUIT INDICATED USING 2#12, #12G, IN 3/4" CONDUIT AND PROVIDE FINAL CONNECTIONS AFTER PLUMBER INSTALLATION.
21	EXISTING BOH FURNITURE TO BE REPLACED AND/OR RELOCATED, POWER AND DATA DEVICES TO REMAIN. PROVIDE NEW ONLY IF NEEDED.
22	EXISTING ROOF MOUNTED CONDENSING UNIT TO REMAIN. MAINTAIN EXISTING CIRCUITING. CONTROL WITH NEW THERMOSTAT.
23	RELOCATED FAN COIL. FIELD VERIFY POWER AND CONTROL WIRING REQUIREMENTS. FAN COIL POWERED FROM EXISTING CONDENSING UNIT.

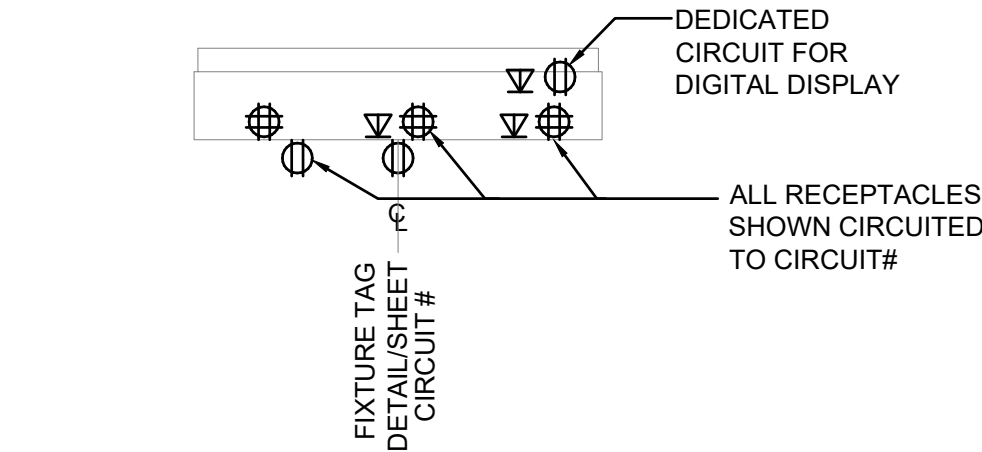
GENERAL NOTES

- ELECTRICAL CONTRACTOR TO LABEL ALL RECEPTACLES AND PROVIDE A TYPE-WRITTEN PANEL SCHEDULE INSIDE THE ELECTRICAL PANEL.
- ALL WORK SHALL COMPLY WITH THE CURRENTLY ADOPTED CODES, ORDINANCES, AND AMENDMENTS.
- ALL EQUIPMENT SHALL BE LISTED BY A RECOGNIZED TESTING LAB (i.e. U.L., ETC.)
- PROVIDE PLENUM RATED WIRING WHERE REQUIRED. COMPLY WITH NEC 300.22.
- PROPERLY GROUND RECEPTACLES, BOXES AND COVER PLATES INSTALLED IN FIXTURES PER NEC 250 AND 406.
- NO BX, AC OR ROMEX TYPE WIRING ALLOWED IN WALLS.
- ALL LOW VOLTAGE WIRING TO BE IN CONDUIT UNLESS OTHERWISE APPROVED BY AUTHORITY HAVING JURISDICTION.

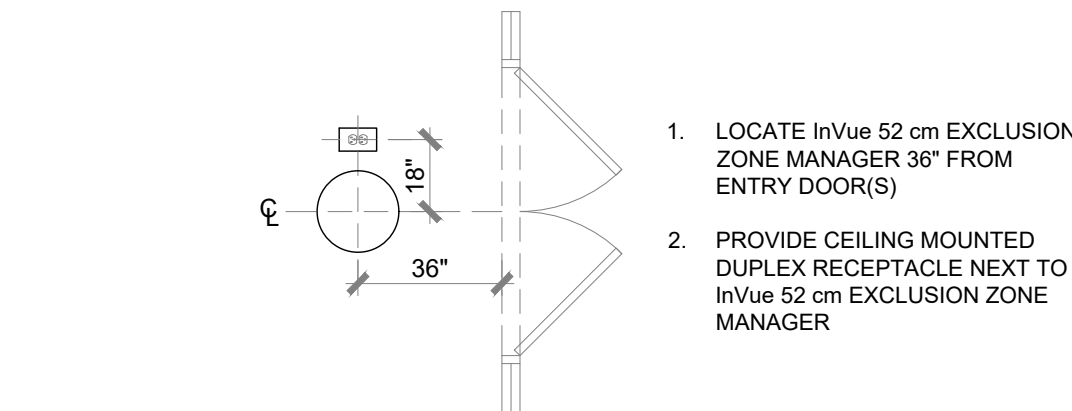
WHEN REQUIRED, IT IS THE OWNERS RESPONSIBILITY TO CONTRACT WITH A COMMISSIONING AUTHORITY TO COMPLY WITH LOCAL CODES.

WIRING SYMBOLS

- |    |  |    |                                     |
|----|--|----|-------------------------------------|
| X2 | DUPLEX RJ45 JACK<br>W/ 2 CAT5e WIRES   | X2 | OVERHEAD SHOPPER<br>TRACKER CABLING |
| X3 | QUADPLEX RJ45 JACK<br>W/ 3 CAT5e WIRES | X3 | OVERHEAD AP CABLING                 |
| X4 | QUADPLEX RJ45 JACK<br>W/ 4 CAT5e WIRES |    |                                     |



A2 FIXTURE CIRCUITING DETAIL  
1/4" = 1'-0"



A1 EXCLUSION ZONE MANAGER CLG DTL  
1/4" = 1'-0"