

3 (E) PENTHOUSE ROOF FRAMING PLAN $\frac{1}{8"} = 1'-0"$  

[illegible]

ROOM FINISH SCHEDULE										
ROOM NO. FIRST FLOOR	NAME	FLOOR	BASE	WALLS				CEILING FINISH		REMARKS
				EAST	NORTH	SOUTH	WEST			
AB1-01	CORRIDOR	-	RB-1	P-1	-	-	-	-		NEW WALLS ONLY
AB1-01C	CORRIDOR	EXISTING	EXISTING	-	-	-	-	-		
B1-02	LOBBY	LVT-1/LVT-2	RB-1	P-1	P-4	P-1	P-1	ACT-1		
B1-07C	CORRIDOR	EXISTING	-	-	-	-	-	-		
B1-10C	CORRIDOR	EXISTING	-	-	-	-	-	-		
B1-11C	CORRIDOR	-	RB-1	P-1	P-1	P-1	P-1	ACT-1		NEW WALLS ONLY
B1-13C	CORRIDOR	-	-	-	-	-	-	-		
B1-15	WAITING	LVT-1/LVT-2	RB-1	P-1	P-4	P-1	P-1	ACT-1		
B1-41	TR	SDT-1	RB-1	P-6	P-6	P-6	P-6	EXPOSED STRUCTURE		EXPOSED STRUCTURE AS IS, NO PAINT
B1-41A	OFFICE	-	RB-1	-	-	P-1	-	EXISTING		PATCH EXISTING CEILING, NEW WALLS ONLY
B1-45	ELEC	SEALED CONCRETE	RB-1	P-1	P-1	P-1	P-1	EXPOSED STRUCTURE		
B1-46	CONSULT	LVT-1	RB-1	P-4	P-1	P-1	P-1	ACT-1		
B1-47	OFFICE, DAV	CPT-1	RB-1	P-1	P-2	P-1	P-1	ACT-1		
B1-47A	OFFICE, DAV	CPT-1	RB-1	P-1	P-2	P-1	P-1	ACT-1		
B1-48	OFFICE	CPT-1	RB-1	P-1	P-1	P-1	P-1	ACT-1		
B1-84	TRAP	LVT-1	RB-1	P-1	P-1	P-1	P-1	GYP. BOARD		
B1-84A	SECURITY	CPT-1	RB-1	P-1	P-1	P-1	P-1	ACT-1		
B1-84B	TOILET	RES-2	RESB-2	PWT-1/PWT-2	PWT-1/PWT-2	PWT-1/PWT-2	PWT-1/PWT-2	ACT-1		
B1-115	CORRIDOR	LVT-1/LVT-2	RB-1	P-1	EXISTING	P-1	P-1	GYP. BOARD		
B1-124	CORRIDOR	LVT-1/LVT-2	RB-1	P-1	P-1	P-1	P-1	ACT-1		
B1-133	HAC	EXISTING	-	-	-	-	-	-		
B1-135	ELEC	EXISTING	-	-	-	-	-	-		
B1-176	IT CLOSET	EXISTING	-	-	-	-	-	-		
B1-184	ELEC VAULT	EXISTING	-	-	-	-	-	-		
B1-194	CORRIDOR	RSF-1/RSF-2/RSF-3	RSFB-1/RSFB-2/RSFB-3	P-1	P-1	P-1	P-1	GYP BOARD/ACT-1		PAINT CURVED BULKHEADS P-4 ALL SIDES AND BOTTOM
B1-200	VESTIBULE	CPT-2	RB-1	P-1/HIW-1	P-1/HIW-1	P-1/HIW-1	P-1/HIW-1	ACT-1		HIW-1 HIGH IMPACT WALLCOVERNG IS AT 3'-6"H WAINSCOT
B1-201	WAITING	LVT-1	RB-1	P-1/DRWC-1	P-1	P-1	P-1	GYP. BOARD/ACT-1/ACT-3		
B1-201A	CHECK-IN	P-1	RB-1	P-5	P-1	P-1	P-1	GYP BOARD/ACT-1		
B1-201B	TOILET	RES-2	RESB-2	PWT-1/PWT-2	PWT-1/PWT-2	PWT-1/PWT-2	PWT-1/PWT-2	GYP. BOARD		EP-2 EPOXY PAINT ON CEILING
B1-201C	TOILET	RES-2	RESB-2	PWT-1/PWT-2	PWT-1/PWT-2	PWT-1/PWT-2	PWT-1/PWT-2	GYP. BOARD		EP-2 EPOXY PAINT ON CEILING
B1-201D	WC	LVT-1	RB-1	HIW-2/P-1	HIW-2/P-1	-	HIW-2/P-1	ACT-1		HW-2 HIGH IMPACT WALLCOVERING IS AT 3'-6"H WAINSCOT
B1-201E	CORRIDOR	LVT-1/LVT-2	RSFB-1/RSFB-2/RSFB-3	P-1	P-1	P-1	P-1	GYP BOARD/ACT-3		
B1-201F	CORRIDOR	LVT-1	RSFB-1/RSFB-2/RSFB-3	P-1	P-1	P-1	P-1	GYP BOARD/ACT-1		
B1-202	TOILET	RES-2	RESB-2	PWT-1/PWT-2	PWT-1/PWT-2	PWT-1/PWT-2	PWT-1/PWT-2	GYP. BOARD		
B1-203	TOILET	RES-2	RESB-2	PWT-1/PWT-2	PWT-1/PWT-2	PWT-1/PWT-2	PWT-1/PWT-2	GYP. BOARD		
B1-204	EXAM 1	RSF-1	RSFB-1	HIW-1/P-1	HIW-1/P-2	HIW-1/P-1	HIW-1/P-1	ACT-1		HIW-1 HIGH IMPACT WALLCOVERNG IS AT 3'-6"H WAINSCOT
B1-205	EXAM 2	RSF-1	RSFB-1	HIW-1/P-1	HIW-1/P-2	HIW-1/P-1	HIW-1/P-1	ACT-1		HIW-1 HIGH IMPACT WALLCOVERNG IS AT 3'-6"H WAINSCOT
B1-206	EXAM 3	RSF-1	RSFB-1	HIW-1/P-1	HIW-1/P-2	HIW-1/P-1	HIW-1/P-1	ACT-1		HIW-1 HIGH IMPACT WALLCOVERNG IS AT 3'-6"H WAINSCOT
B1-207	SOIL	RSF-1	RSFB-1	HIW-4/EP-1	HIW-4/EP-1	HIW-4/EP-1	HIW-4/EP-1	ACT-2		HIW-4 HIGH IMPACT WALLCOVERNG IS AT 3'-6"H WAINSCOT
B1-207A	NURSE STATION	RSF-2	RSFB-2	P-4	-	-	-	GYP BOARD/ACT-1		
B1-207B	PROVIDER	RSF-2	RSFB-2	P-1	P-1	P-1	P-1	ACT-1		
B1-207C	NURSE STATION	RSF-2	RSFB-2	-	-	-	P-4	GYP BOARD/ACT-1		
B1-208	CLEAN SUPPLY	RSF-1	RSFB-1	HIW-4/P-1	HIW-4/P-1	HIW-4/P-1	HIW-4/P-1	ACT-1		HIW-4 HIGH IMPACT WALLCOVERNG IS AT 3'-6"H WAINSCOT
B1-208A	ALC	RSF-1	RSFB-1	HIW-3/P-1	HIW-3/P-1	-	HIW-3/P-1	GYP. BOARD		HIW-3 HIGH IMPACT WALLCOVERNG IS AT 4'-0"H WAINSCOT
B1-209	BREAKROOM	LVT-1	RB-1	P-2	P-1	P-1	P-1	ACT-1		
B1-210	HAC	RSF-1	RSFB-1	HIW-4/EP-1	HIW-4/EP-1	HIW-4/EP-1	HIW-4/EP-1	GYP. BOARD		HIW-4 HIGH IMPACT WALLCOVERNG IS AT 3'-6"H WAINSCOT; EP-2 EPOXY PAINT ON CEILING
B1-211	TOILET	RES-2	RESB-2	PWT-1/PWT-2	PWT-1/PWT-2	PWT-1/PWT-2	PWT-1/PWT-2	GYP. BOARD		EP-2 EPOXY PAINT ON CEILING
B1-212	MENTAL HEALTH EXAM	RSF-1	RSFB-1	EP-1	EP-1	EP-1	EP-1	GYP. BOARD		EP-2 EPOXY PAINT ON CEILING
B1-213	INTERVENTION	RSF-1	RSFB-1	EP-1	EP-1	EP-1	EP-1	GYP. BOARD		
B1-214	EXAM 4	RSF-1	RSFB-1	HIW-1/P-1	HIW-1/P-1	HIW-1/P-1	HIW-1/P-3	ACT-1		HIW-1 HIGH IMPACT WALLCOVERNG IS AT 3'-6"H WAINSCOT
B1-215	EXAM 5	RSF-1	RSFB-1	HIW-1/P-1	HIW-1/P-1	HIW-1/P-1	HIW-1/P-3	ACT-1		HIW-1 HIGH IMPACT WALLCOVERNG IS AT 3'-6"H WAINSCOT
B1-216	EQUIPMENT	RSF-1	RSFB-1	HIW-4/EP-1	HIW-4/EP-1	HIW-4/EP-1	HIW-4/EP-1	ACT-2		HIW-4 HIGH IMPACT WALLCOVERNG IS AT 3'-6"H WAINSCOT
B1-217	STORAGE	RSF-1	RSFB-1	HIW-4/P-1	HIW-4/P-1	HIW-4/P-1	HIW-4/P-1	ACT-1		HIW-4 HIGH IMPACT WALLCOVERNG IS AT 3'-6"H WAINSCOT
B1-218	DECON	RES-2	RESB-2	RES-W	RES-W	RES-W	RES-W	GYP. BOARD		EP-2 EPOXY PAINT ON CEILING; NO TOP CAP ON RESB-2
B1-219	MEDS	RSF-1	RSFB-1	P-1	P-1	P-1	P-1	ACT-1		
B1-220	VESTIBULE	CPT-2	RB-1	P-1	P-1	P-1	P-1	ACT-1		
B1-221	BIARIATRIC & ISOLATION	RSF-1	RSFB-1	HIW-1/EP-1	HIW-1/EP-1	HIW-1/EP-2	HIW-1/EP-1	ACT-4		HIW-1 HIGH IMPACT WALLCOVERNG IS AT 3'-6"H WAINSCOT
B1-221A	ANTE	RSF-1	RSFB-1	EP-1	EP-1	EP-1	EP-1	GYP. BOARD		EP-2 EPOXY PAINT ON CEILING
B1-221B	TOILET/SHR	RES-2	RESB-2	PWT-1/PWT-2	PWT-1/PWT-2	PWT-1/PWT-2	PWT-1/PWT-2	GYP. BOARD		EP-2 EPOXY PAINT ON CEILING
B1-222	BIARIATRIC & ISOLATION	RSF-1	RSFB-1	HIW-1/EP-1	HIW-1/EP-1	HIW-1/EP-2	HIW-1/EP-1	ACT-4		HIW-1 HIGH IMPACT WALLCOVERNG IS AT 3'-6"H WAINSCOT
B1-222A	ANTE	RES-2	RESB-2	EP-1	EP-1	EP-1	EP-1	GYP. BOARD		EP-2 EPOXY PAINT ON CEILING
B1-222B	TOILET/SHR	RES-2	RESB-2	PWT-1/PWT-2	PWT-1/PWT-2	PWT-1/PWT-2	PWT-1/PWT-2	GYP. BOARD		
B1-223	RESUSCITATION	RESB-1	RESB-1	HIW-1/RES-W	HIW-1/RES-W	HIW-1/RES-W	HIW-1/RES-W	ACT-2		HIW-1 HIGH IMPACT WALLCOVERNG IS AT 3'-6"H WAINSCOT
B1-225	FIRE RISER	EF-1	-	-	-	-	-	EXPOSED STRUCTURE		
B1-226	CORRIDOR	RSF-1/RSF-2/RSF-3	RSFB-1/RSFB-2/RSFB-3	P-1	P-1	P-1	P-1	GYP BOARD/ACT-1		PAINT CURVED BULKHEADS P-4 ALL SIDES AND BOTTOM
B1-227	CORRIDOR	RSF-1/RSF-2/RSF-3	RSFB-1/RSFB-3	-	-	-	P-1	GYP BOARD/ACT-1		PAINT CURVED BULKHEADS P-4 ALL SIDES AND BOTTOM
B1-228	CORRIDOR	RSF-1/RSF-2/RSF-3	RSFB-1/RSFB-3	P-1/SS-3	-	-	-	GYP BOARD/ACT-1		SS-3 SOLID SURFACE BEHIND WATERCOOLER, PAINT CURVED BULKHEAD P-4 ALL SIDES AND BOTTOM
B1-229	CORRIDOR	LVT-1/LVT-2	RB-1	-	P-1	P-1	-	ACT-1		
B1-230	CORRIDOR	LVT-1	RB-1	P-1	P-1	P-1	P-1	ACT-1		
B1-231	OFFICE, CHIEF EM	LVT-1	RB-1	P-1	P-1	P-4	P-1	ACT-1		
B1-232	STORAGE	LVT-1	RB-1	P-1	P-1	P-1	P-1	EXPOSED STRUCTURE		
B1-233	OFFICE, N MGR	LVT-1	RB-1	P-1	P-1	P-4	P-1	ACT-1		
B1-234	M LOCKERS	RES-2	RESB-2	EP-1	EP-1	EP-1	EP-1	ACT-1		
B1-235	TLT/SHWR	RES-2	RESB-2	PWT-1/PWT-2	PWT-1/PWT-2	PWT-1/PWT-2	PWT-1/PWT-2	GYP. BOARD		EP-2 EPOXY PAINT ON CEILING
B1-236	W LOCKERS	RES-2	RESB-2	EP-1	EP-1	EP-1	EP-1	ACT-1		
B1-237	TOILET	RES-2	RESB-2	PWT-1/PWT-2	PWT-1/PWT-2	PWT-1/PWT-2	PWT-1/PWT-2	GYP. BOARD		EP-2 EPOXY PAINT ON CEILING
B1-238	ON-CALL	CPT-1	RB-1	P-4	P-1	P-1	P-1	ACT-1		
B1-240	CORRIDOR	LVT-1	RB-1	P-1	P-1	P-1	P-1	ACT-1		
B1-240A	TRAP	LVT-1	RB-1	P-1	P-1	P-1	P-1	GYP. BOARD		
B1-240B	ADMIN	CPT-1	RB-1	P-1	P-1	P-1	P-2	ACT-1		
B1-241	HOLDING	RES-2	RESB-2	P-1	P-1	P-1	P-1	GYP. BOARD		
B1-242	BREAK AREA	LVT-1	RB-1	P-1	P-1	P-1	P-2	ACT-1		
B1-243	DEPUTY CHIEF	CPT-1	RB-1	P-1	P-1	P-1	P-2	ACT-1		
B1-244	CHIEF OFFICE	CPT-1	RB-1	P-1	P-1	P-1	P-2	ACT-1		
B1-245	WORKSTATIONS	LVT-1	RB-1	P-4	P-1	P-1	P-1	ACT-1		
B1-246	INTERVIEW	LVT-1	RB-1	P-4	P-1	P-1	P-1	ACT-1		
B1-247	EVIDENCE	LVT-1	RB-1	P-1	P-1	P-1	P-1	ACT-1		
B1-248	TOILET	RES-2	RESB-2	PWT-1/PWT-2	PWT-1/PWT-2	PWT-1/PWT-2	PWT-1/PWT-2	GYP. BOARD		EP-2 EPOXY PAINT ON CEILING
B1-249	ARMORY	CPT-1	RB-1	P-1	P-2	P-1	P-1	ACT-1		
B1-250	M LOCKER	RES-2	RESB-2	EP-1	EP-1	EP-1	EP-1	ACT-1		
B1-251	W LOCKER	RES-2	RESB-2	EP-1	EP-1	EP-1	EP-1	ACT-1		
B1-252	TRAP	CPT-1	RB-1	P-1	P-1	P-1	P-1	GYP. BOARD		
S2F1	STAIR	EXISTING	-	-	-	-	-	-		

ROOM FINISH SCHEDULE										
ROOM NO. SECOND FLOOR	NAME	FLOOR	BASE	WALLS				CEILING FINISH		REMARKS
				EAST	NORTH	SOUTH	WEST			
B2-41K	MECH	EF-1	RB-1	P-1	P-1	P-1	P-1	EXPOSED STRUCTURE		

PLASTIC LAMINATE CASEWORK GENERAL NOTES

THE FOLLOWING NOTES ARE SPECIFIC TO CASEWORK AND ARE IN ADDITION TO THE GENERAL FINISH NOTES.

- DIMENSIONS FOR CASEWORK SHALL BE FIELD VERIFIED PRIOR TO FABRICATION AND INSTALLATION.
- BEYOND BASE CABINET PROVIDE HYBRID THIN WALL BRACKET COUNTERTOP SUPPORTS AT 36" O.C. MAX.
- WHERE INDICATED ON DRAWINGS, PROVIDE 2-1/2" DIAMETER GROMMETS.
- PROVIDE FINISHED END PANEL AT EXPOSED CASEWORK ENDS AND BACKS AS NEEDED. PANEL TO MATCH PLASTIC LAMINATE. END PANEL SUPPORTS SHALL BE 1-1/2" WIDE.
- WHEN FILLER PANELS ARE REQUIRED AT BOTH ENDS OF CASEWORK, BOTH FILLER PANELS SHALL BE EQUAL WIDTH. ADD FILLER PANEL AS NEEDED AT ALL CABINETS TO ENSURE FULL DOOR SWING AND DRAWER OPERATION (UNO).
- ALL COUNTERTOPS TO BE SOLID SURFACE INTEGRAL ONE PIECE DESIGN WITH EASED EDGE AT ALL EXPOSED EDGES. WITH 1/2" RADIUS AT EXPOSED CORNERS. ALL JOINTS IN COUNTERTOPS, SPLASHES, AND CURBS SHALL ALIGN AND BE SMOOTH. ALL COUNTERTOPS ARE 1-1/2" THICK WITH 4" HIGH BACKSIDE SPLASHES (UNO).
- ALL COUNTERTOPS TO EXTEND 1" BEYOND FRONT OF CABINET DOOR FACE AND OPEN SIDES.
- ALL WALL CABINETS TO BE 15" DEEP OUT TO OUT (UNO). PROVIDE LIGHT VALANCES WHERE UNDERCABINET LIGHTS ARE SHOWN.
- ALL WALL CABINETS WITHOUT SOFFITS ARE TO HAVE SLOPE TOPS.
- ALL SHELVING SHOWN WITH DASHED LINES IN ELEVATIONS TO BE ADJUSTABLE.
- ALL BASE CABINETS TO BE 23" DEEP WITH 24" DEEP COUNTERTOP INCLUDING BACKSPLASH (UNO).
- PROVIDE 16 GAUGE BACKING FOR ITEMS THAT ARE REQUIRED TO BE SECURED TO THE WALLS. REFERENCE MECHANICAL, PLUMBING, ELECTRICAL AND TECHNOLOGY DRAWINGS. COORDINATE WITH FURNITURE SUPPLIER WHERE APPROPRIATE.
- SEE SHEET I-202 AND I-204 FOR TYPICAL CABINET SECTIONS.
- CAULK AROUND COUNTERTOPS WITH CAULK TO MATCH.

METAL CASEWORK GENERAL NOTES

- THE CONTRACTOR SHALL PROVIDE ALL ITEMS AND MATERIALS SHOWN, INDICATED, OR REQUIRED FOR A COMPLETE INSTALLATION (UNO).
- THE FOLLOWING NOTES ARE SPECIFIC TO STAINLESS STEEL CASEWORK AND ARE IN ADDITION TO THE GENERAL FINISH NOTES.
- DIMENSIONS FOR CASEWORK SHALL BE FIELD VERIFIED PRIOR TO FABRICATION AND INSTALLATION.
- CONTRACTOR SHALL COORDINATE INSTALLATION OF CASEWORK WITH SINKS / PLUMBING FIXTURES AND ASSOCIATED PIPINGS AND FITTINGS.
- SEE SHEET I-204 FOR TYPICAL METAL CABINET SECTIONS.
- PROVIDE 16 GAUGE BACKING FOR ITEMS THAT ARE REQUIRED TO BE SECURED TO THE WALLS. REFERENCE MECHANICAL, PLUMBING, ELECTRICAL AND TECHNOLOGY DRAWINGS.

ALL WORK

- ALL BASE CABINETS TO BE 23" DEEP WITH 24" DEEP COUNTERTOP INCLUDING BACKSPLASH UNLESS NOTED OTHERWISE.
- ALL WALL CABINETS TO BE 15" DEEP OUT TO OUT (UNO). PROVIDE LIGHT VALANCES WHERE UNDERCABINET LIGHTS ARE SHOWN.
- ALL WALL CABINETS WITHOUT SOFFITS ARE TO HAVE SLOPE TOPS.
- ALL SHELVING SHOWN AS DASHED LINES IN ELEVATIONS ARE TO BE ADJUSTABLE.
- WHEN FILLER PANELS ARE REQUIRED AT BOTH ENDS OF CASEWORK, BOTH FILLER PANELS SHALL BE EQUAL WIDTH (UNO). ADD FILLER PANEL AS NEEDED AT ALL CABINETS TO ENSURE FULL DOOR SWING AND DRAWER OPERATION (UNO).
- ALL COUNTERTOPS TO BE SOLID SURFACE OR STAINLESS STEEL INTEGRAL ONE PIECE DESIGN WITH EASED EDGE AT ALL EXPOSED EDGES WITH 1/2" RADIUS AT EXPOSED CORNERS. ALL JOINTS IN COUNTERTOPS, SPLASHES AND CURBS SHALL ALIGN AND BE SMOOTH. ALL SOLID SURFACE COUNTERTOPS ARE 1-1/2" THICK WITH 4" HIGH BACKSIDE SPLASHES (UNO).
- SEALANT JOINTS AT COUNTERTOPS, TRANSACTION TOPS, BACK / SIDE SPLASHES, AND END PANELS TO THE WALL SHALL HAVE CLASS 90 SILICONE SEALANT. SEALANT TO BE CLEAR OR COORDINATING COLOR. COLOR TO BE SELECTED BY DESIGNER FROM MANUFACTURER'S CUSTOM RANGE.
- ALL COUNTERTOPS TO EXTEND 1" BEYOND FRONT OF CABINET DOOR FACE AND SIDES.
- COUNTERTOP SUPPORT END PANELS SHALL BE 1-1/2" THICK.

SIGNAGE GENERAL NOTES

- THE CONTRACTOR SHALL PROVIDE ALL ITEMS AND MATERIALS SHOWN, INDICATED, OR REQUIRED FOR A COMPLETE INSTALLATION (UNO).
- ALL SIGNAGE TO MEET VA SIGNAGE GUIDELINES AND ADA INSTALLATION HEIGHTS. CONTRACTOR TO COORDINATE THE TEXT OF SIGN INSERTS WITH COR AND PROVIDE A ROOM SIGNAGE SCHEDULE WITH CONSTRUCTION SUBMITTAL FOR COR TO GIVE FINAL APPROVAL OF ALL SIGNAGE TEXT, DESIGN, AND LOCATIONS.
- SIGNS TO MATCH XXXXXX CAMPUS SIGNAGE STANDARDS. COLORS AND STYLES TO BE DETERMINED BY FACILITIES.
- SIGNAGE SHALL BE CONTRACTOR FURNISHED AND INSTALLED (UNO).
- PERMANENT ROOM SIGNAGE MUST INCLUDE RAISED LETTERS AND BRAILLE AND MEET ADA GUIDELINES.
- IF WALL SPACE IS NOT AVAILABLE FOR SIGNAGE ON LATCH SIDE OF DOOR PER MOUNTING STANDARDS, SIGNS SHALL BE INSTALLED PER CURRENT ADA STANDARDS ON NEAREST ADJACENT WALL.

ABBREVIATION LEGEND
WM = WALL MOUNTED
DM = DOOR MOUNTED
FM = FLAG MOUNTED
CMU = BULKHEAD MOUNTED
CM = CEILING MOUNTED

EQUIPMENT GENERAL NOTES

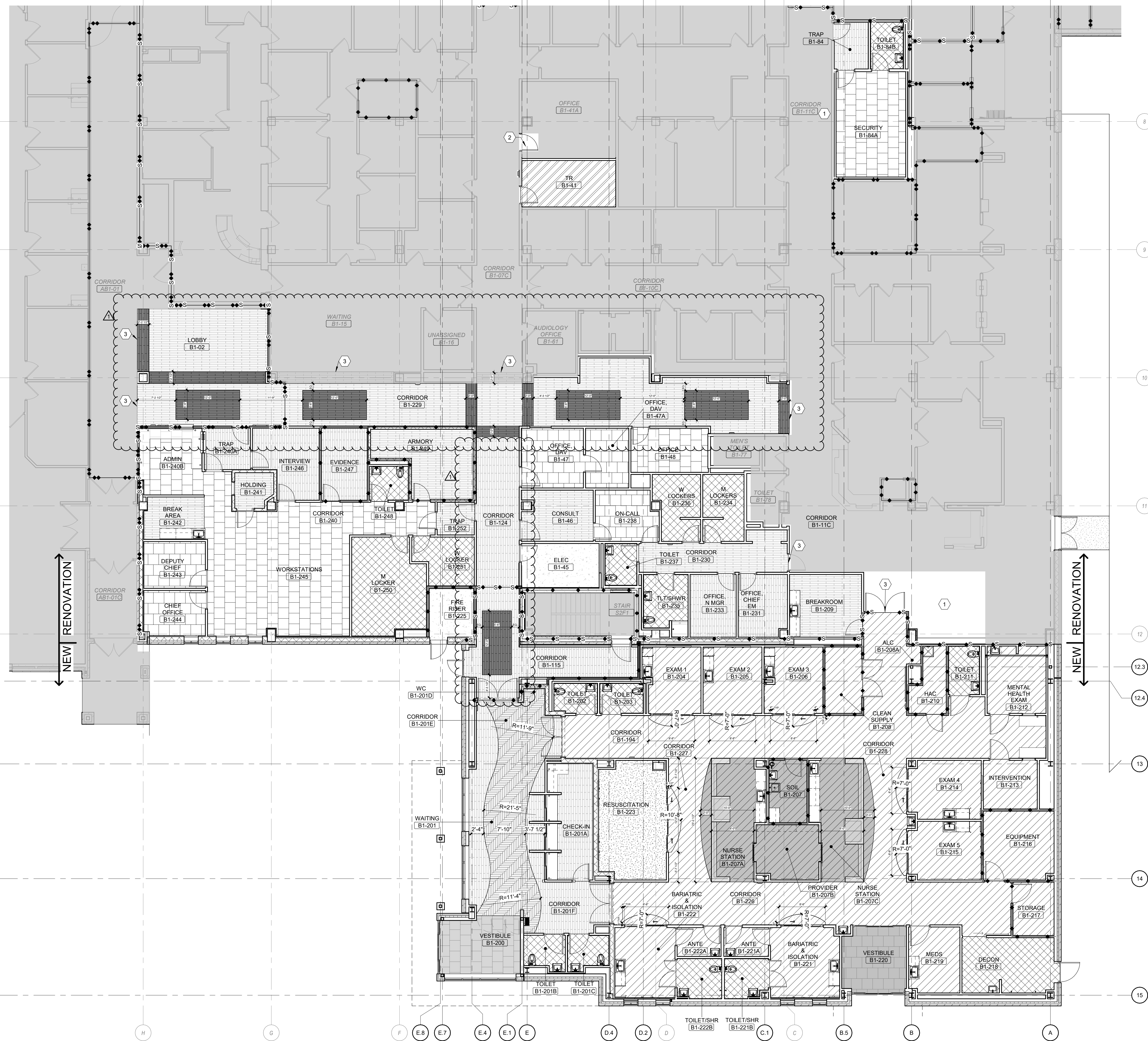
- REFER TO G-003 FOR STANDARD MOUNTING HEIGHTS AND BLOCKING. REFER TO EQUIPMENT DRAWINGS FOR LOCATIONS AND ADDITIONAL DIMENSIONS. PROVIDE 16 GAUGE BACKING FOR ALL WALL MOUNTED EQUIPMENT OR AS REQUIRED BY THE MANUFACTURER'S REQUIREMENTS FOR INSTALLATION.
- REFER TO MECHANICAL, ELECTRICAL, PLUMBING, TEL-COM AND LOW VOLTAGE DRAWINGS FOR ADDITIONAL REQUIRED UTILITY CONNECTIONS AND LOCATIONS.
- FURNITURE, FIXTURES AND EQUIPMENT DESIGNATED "VV" ON PLANS AND SCHEDULES ARE FOR COORDINATION AND SPATIAL PURPOSES ONLY AND NOT TO BE USED FOR ACTUAL PURCHASING QUANTITIES.
- REFER TO SHEETS I-431 THRU 432 FOR ENLARGED TOILET ROOMS.
- REFER TO REFLECTED CEILING PLANS A-110 FOR CUBICLE CURTAIN TRACKS, LIFT AND ALL OTHER CEILING MOUNTED EQUIPMENT LOCATIONS.
- SEE ENLARGED EQUIPMENT PLANS ON SHEETS I-411 THRU I-424
- SEE EQUIPMENT SCHEDULES ON SHEETS I-601 THRU 604 FOR SPECIFICS ON EQUIPMENT BY ROOM.
- ITEM TAGS INCLUDE ACQUISITION AND INSTALLATION RESPONSIBILITIES (ACQ.), DENOTED AS FOLLOWS:

EQUIPMENT SCHEDULE LEGEND

- "VV" = VA FURNISHED & VA INSTALLED
- "VC" = VA FURNISHED & CONTRACTOR INSTALLED
- "CC" = CONTRACTOR FURNISHED & CONTRACTOR INSTALLED

FINISH GENERAL NOTES

- REFERENCE ROOM FINISH SCHEDULE, FINISH MATERIAL LEGEND AND SPECIFICATION 09 06 00 SCHEDULE OF FINISHES FOR MORE INFORMATION.
- REFERENCE REFLECTED CEILING PLAN FOR ADDITIONAL CEILING INFORMATION.
- PREPARE ALL FLOOR AND WALL CONSTRUCTION TO RECEIVE NEW FINISHES IN ACCORDANCE WITH MANUFACTURER'S RECOMMENDED INSTALLATION METHODS AND MATERIALS.
- PRIOR TO THE INSTALLATION OF NEW FINISHES, THE CONTRACTOR SHALL INSPECT ALL SUBSTRATES. IF A SUBSTRATE IS DEEMED UNACCEPTABLE, THE CONTRACTOR SHALL TAKE THE NECESSARY STEPS TO RECTIFY THE SITUATION OR CONTACT THE COR WITH THE CONCERN. STARTING WORK CONSTITUTES ACCEPTANCE OF EXISTING CONDITIONS.
- USE MANUFACTURER'S RECOMMENDED INSTALLATION METHODS AND MATERIALS FOR ALL FINISHES.
- T



1 FIRST FLOOR PATTERN PLAN
Scale: 1/8" = 1'-0"

FINISH KEY

- LVT-1 LUXURY VINYL TILE (PATTERN TO BE 1/3 RUNNING BOND) AS DIRECTION SHOWN IN THE ROOM
- LVT-1 LUXURY VINYL TILE (HERRINGBONE PATTERN)
- LVT-2 LUXURY VINYL TILE
- CPT-1 CARPET TILE
- CPT-2 CARPET TILE
- RSF-1 RESILIENT SHEET FLOORING
- RSF-2 RESILIENT SHEET FLOORING
- RSF-3 RESILIENT SHEET FLOORING
- SEALED CONCRETE
- RES-1 RESINOUS FLOORING
- RES-2 RESINOUS FLOORING
- SDT-1 STATIC DISSIPATIVE TILE

KEY NOTES:

- 1 EXISTING FLOOR TO REMAIN.
- 2 INFILL DOOR OPENING TO MATCH EXISTING FLOORING. SEE VA FOR FINISH TO MATCH.
- 3 FLOOR TRANSITION BETWEEN NEW AND EXISTING FLOORING.

SCOPE OF WORK LEGEND

- NOT IN SCOPE

WALL RATING LEGEND

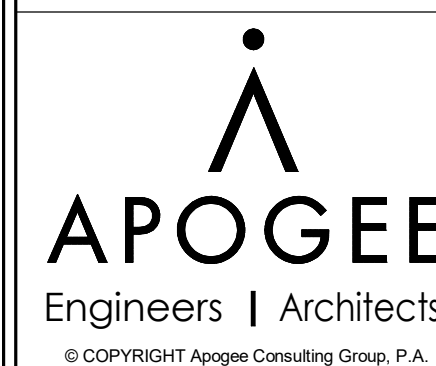
- 1 HR - SMOKE BARRIER
- 1 HR - FIRE BARRIER
- 2 HR - FIRE BARRIER
- SMOKE RESISTIVE

FULLY SPRINKLERED
100% BID DOCUMENTS

CONSULTANTS:

PROJECT MANAGER

ACG Project Number
20-147



Headquarters:
Apogee Consulting Group, P.A.
1151 Kildaire Farm Road, Suite 120
Cary, North Carolina 27511

www.acg-pa.com 919-858-7420

Office of
Construction
and Facilities
Management



Drawing Title
FIRST FLOOR PATTERN PLAN

Location
CHEYENNE VETERANS AFFAIRS
MEDICAL CENTER
2360 E PERSHING BLVD
CHEYENNE, WY 82001

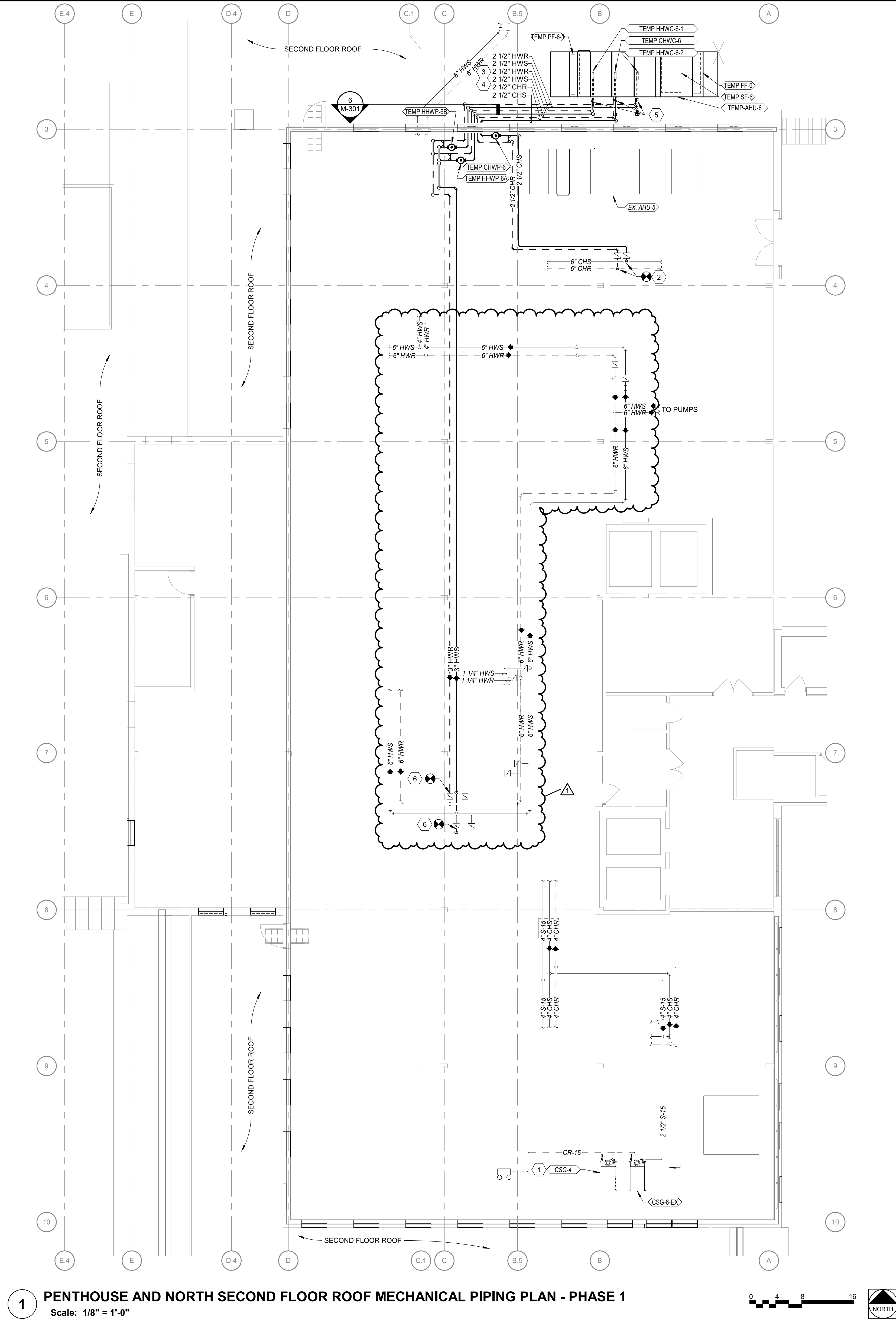
Project Title
EXPAND EMERGENCY
DEPARTMENT

Approved
Date
MARCH 28, 2024

Checked
ELI

Drawn
ELI/KJC

VA PROJECT NUMBER
442-303
Building Number
BUFFALO
Drawing Number
I-121
Dwg 3 of 27



1 PENTHOUSE AND NORTH SECOND FLOOR ROOF MECHANICAL PIPING PLAN - PHASE 1
Scale: 1/8" = 1'-0"

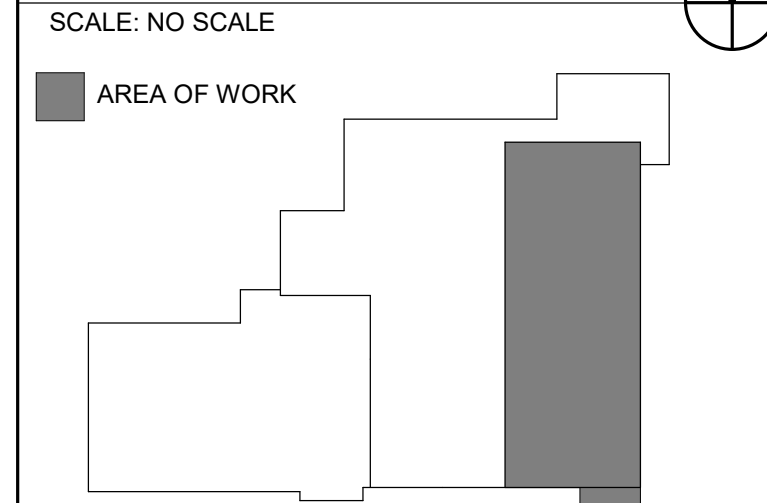
SHEET NOTES:

- NOT ALL DUCTWORK OR EQUIPMENT IS SHOWN ON THIS SHEET. ONLY DUCTWORK OR EQUIPMENT AFFECTED BY THIS PROJECT IS SHOWN.
- CAREFULLY COORDINATE DEMOLITION WORK SCHEDULE WITH THE COR.
- NEW WORK RELATED TO THE INSTALLATION OF THE TEMPORARY AHU SHOWN ON THIS PLAN IS PART OF PHASE 1 UNLESS NOTED OTHERWISE.
- NEW WORK RELATED TO THE INSTALLATION OF AHU-6 SHOWN ON THIS PLAN IS PART OF PHASE 2 UNLESS NOTED OTHERWISE.
- REMOVAL OF TEMPORARY AHU-6 AND RELATED PIPING AND DUCTWORK IS TO BE DONE AT THE END OF PHASE 3.
- COORDINATE COIL PIPING LAYOUT WITH ISOLATION VALVES AND UNIONS SO COILS CAN BE PULLED FOR MAINTENANCE WITHOUT COMPLETELY DISMANTLING PIPING DISTRIBUTION.
- TEMPORARY PIPING MAY BE FLEX HOSES, VICTAULIC OR PRO PRESS PIPE AT CONTRACTORS OPTION. TEMPORARY CHILLED WATER PIPING SHALL BE INSULATED. TEMPORARY HEATING HOT WATER PIPING WITHIN THE PENTHOUSE MAY REMAIN UNINSULATED.
- PROVIDE INSULATED HARD PIPES WHERE THE TEMPORARY HOSE VERTICAL RUN IS GREATER THAN 7 FT. PER MANUFACTURER'S RECOMMENDATIONS. INSULATION MAY BE FIBERGLASS FOR OUTDOOR TEMPORARY PIPES. OUTDOOR CHILLED WATER PIPES AND COIL SHALL BE DRAINED MANUALLY IF TEMPERATURE IS EXPECTED TO FALL BELOW 25 DEGREES F TO PREVENT EQUIPMENT DAMAGE FROM FREEZING.

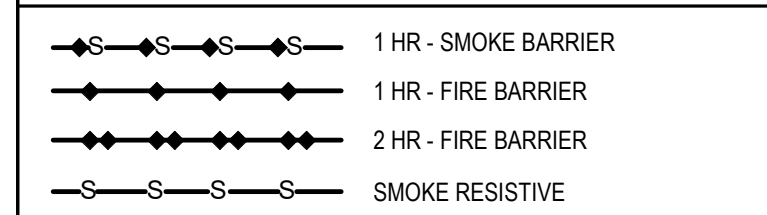
KEY NOTES:

- EXISTING TO REMAIN AS IS.
- EXTEND NEW CHILLED WATER SUPPLY/RETURN PIPING TO COOLING COIL CONNECTIONS AT AHU.
- PIPING RACKED ON WALL. SHOWN OFFSET FOR CLARITY.
- ALL EXTERIOR PIPING TO BE ELECTRIC HEAT TRACED. COORDINATE WITH ELECTRICAL CONTRACTOR.
- CONNECT TO AHU WITH UNION ONLY. ALL VALVES TO BE INSIDE THE PENTHOUSE.
- EXTEND NEW HEATING HOT WATER SUPPLY / RETURN PIPING TO HEATING COIL CONNECTIONS AT AHU.

KEY PLAN



WALL RATING LEGEND



**FULLY SPRINKLERED
100% BID DOCUMENTS**

CONSULTANTS:

PROJECT MANAGER

Headquarters:
APOGEE Consulting Group, P.A.
1151 Kildaire Farm Road, Suite 120
Cary, North Carolina 27511
www.acg-pa.com 919-858-7420

Office of
Construction
and Facilities
Management

U.S. Department
of Veterans Affairs

Drawing Title
**PENTHOUSE AND NORTH SECOND
FLOOR ROOF MECHANICAL PIPING
PLAN - PHASE 1**
Location
**CHEYENNE VETERANS AFFAIRS
MEDICAL CENTER
2360 E PERSHING BLVD
CHEYENNE, WY 82001**

Project Title
**EXPAND EMERGENCY
DEPARTMENT**

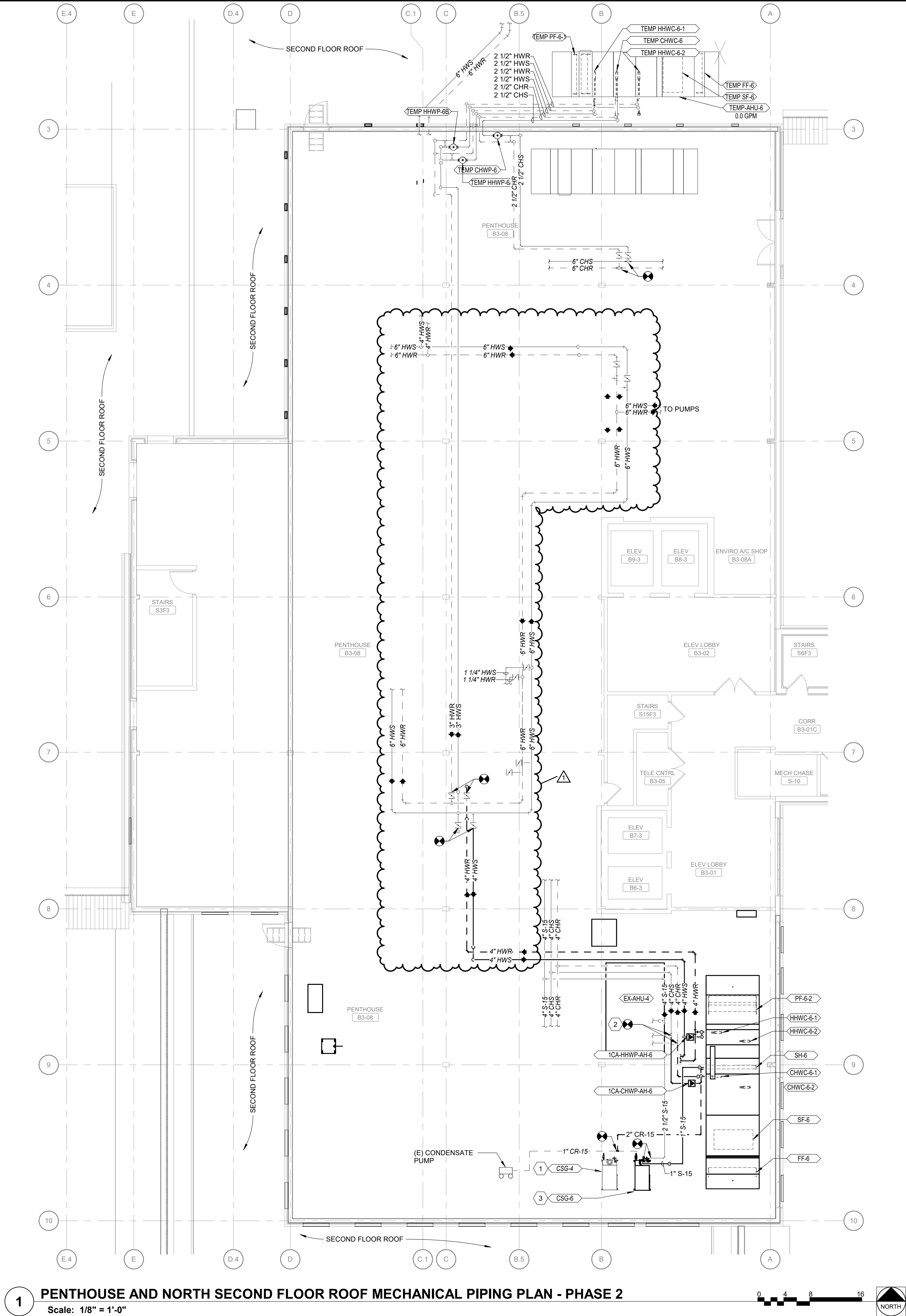
Approved
Date
MARCH 28, 2024

Checked
DJR

Drawn
NSM

VA PROJECT NUMBER
442-303
Building Number
BUFFALO
Drawing Number
MP107
Dwg 27 of 42

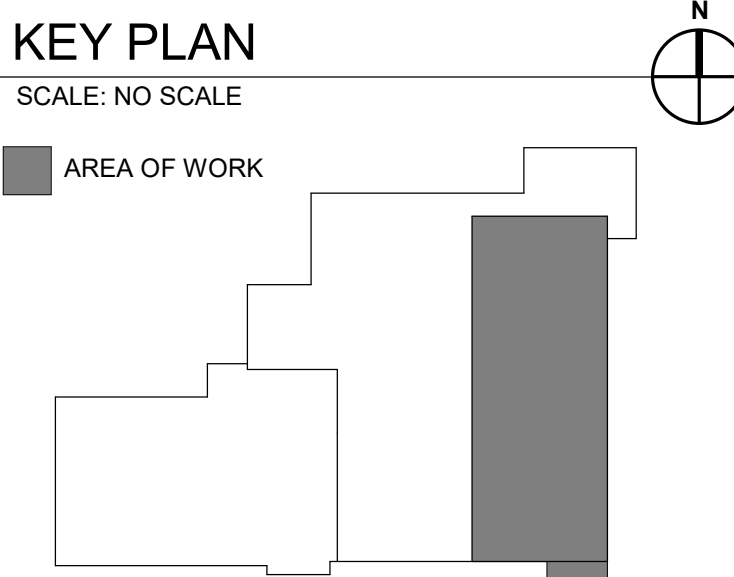
1 ADDENDUM 01 10/22/2024
Revisions: Date



1 PENTHOUSE AND NORTH SECOND FLOOR ROOF MECHANICAL PIPING PLAN - PHASE 2
Scale: 1/8" = 1'-0"

- SHEET NOTES:**
- NOT ALL DUCTWORK OR EQUIPMENT IS SHOWN ON THIS SHEET. ONLY DUCTWORK OR EQUIPMENT AFFECTED BY THIS PROJECT IS SHOWN.
 - CAREFULLY COORDINATE DEMOLITION WORK SCHEDULE WITH THE COR.
 - NEW WORK RELATED TO THE INSTALLATION OF THE TEMPORARY AHU SHOWN ON THIS PLAN IS PART OF PHASE 1 UNLESS NOTED OTHERWISE.
 - NEW WORK RELATED TO THE INSTALLATION OF AHU-6 SHOWN ON THIS PLAN IS PART OF PHASE 2 UNLESS NOTED OTHERWISE.
 - REMOVAL OF TEMPORARY AHU-6 AND RELATED PIPING AND DUCTWORK IS TO BE DONE AT THE END OF PHASE 3.
 - COORDINATE COIL PIPING LAYOUT WITH ISOLATION VALVES AND UNIONS SO COILS CAN BE PULLED FOR MAINTENANCE WITHOUT COMPLETELY DISMANTLING PIPING DISTRIBUTION.
 - ALL CLEAN STEAM PIPING SHALL BE COPPER PIPING.
 - SEE MP107 FOR REQUIREMENTS FOR TEMPORARY PIPING.

- KEY NOTES:**
- EXISTING TO REMAIN AS IS.
 - EXTEND NEW CHILLED WATER SUPPLY/RETURN PIPING TO COOLING COIL CONNECTIONS AT AHU.
 - CONNECT TO EXISTING S-15 AND RO WATER. NEW S-15 TO SH-6 IN AHU. NEW CR-15 TO EXISTING CONDENSATE PUMP.



- WALL RATING LEGEND**
- 1 HR - SMOKE BARRIER
 - 1 HR - FIRE BARRIER
 - 2 HR - FIRE BARRIER
 - SMOKE RESISTIVE

**FULLY SPRINKLERED
100% BID DOCUMENTS**

CONSULTANTS:

PROJECT MANAGER

ACG Project Number
20-147

APOGEE
Engineers | Architects
© COPYRIGHT Apogee Consulting Group, P.A.

Headquarters:
Apogee Consulting Group, P.A.
1151 Kildaire Farm Road, Suite 120
Cary, North Carolina 27511

www.acg-pa.com 919-858-7420

Office of
Construction
and Facilities
Management

VA U.S. Department
of Veterans Affairs

Drawing Title
**PENTHOUSE AND NORTH SECOND
FLOOR ROOF MECHANICAL PIPING
PLAN - PHASE 2**

Location
**CHEYENNE VETERANS AFFAIRS
MEDICAL CENTER
2360 E PERSHING BLVD
CHEYENNE, WY 82001**

Project Title
**EXPAND EMERGENCY
DEPARTMENT**

Approved
Date
MARCH 28, 2024

Checked
DJR

Drawn
NSM

VA PROJECT NUMBER
442-303
Building Number
BUFFALO
Drawing Number
MP108
Dwg 28 of 42

1 ADDENDUM 01 10/22/2024
Revisions: Date

C:\Users\jmei\Documents\26-147_CheyenneED_inet\agc-pa.com.v1

10/28/2024 5:30:38 PM
VA FORM 08-6231



1 FIRST FLOOR MECHANICAL POWER PLAN - PHASE 2
Scale: 1/8" = 1'-0"

CONSULTANTS:

PROJECT MANAGER

Headquarters:
Apogee Consulting Group, P.A.
1151 Kildaire Farm Road, Suite 120
Cary, North Carolina 27511
www.acg-pa.com 919-858-7420
© COPYRIGHT Apogee Consulting Group, P.A.

Office of
Construction
and Facilities
Management

U.S. Department
of Veterans Affairs

Drawing Title
**FIRST FLOOR MECHANICAL POWER
PLAN - PHASE 2**
Location
**CHEYENNE VETERANS AFFAIRS
MEDICAL CENTER
2360 E PERSHING BLVD
CHEYENNE, WY 82001**

Project Title
**EXPAND EMERGENCY
DEPARTMENT**

Approved
Date
MARCH 28, 2024

Checked
JDM

Drawn
EFJ

VA PROJECT NUMBER
442-303
Building Number
BUFFALO
Drawing Number
EM112
Dwg 31 of 43

SHEET NOTES:

- CONTRACTOR TO PROVIDE AND INSTALL ALL DEVICES SHOWN ON THIS PLAN.
- PRIOR TO INSTALLING BRANCH CIRCUIT WIRES AND WIRING DEVICES TO LOCATIONS OF OWNER FURNISHED EQUIPMENT, CONTRACTOR TO REVIEW ALL OWNER FURNISHED EQUIPMENT CUT SHEETS. NOTIFY COR IF DISCREPANCIES EXIST BETWEEN WIRING DEVICES SHOWN AND EQUIPMENT FURNISHED.
- ALL RECEPTACLE CONDUCTORS ARE 2-12 AWG, 1-12 AWG EG IN 3/4" CONDUIT MINIMUM UNLESS NOTED OTHERWISE.
 - 20-AMP CIRCUITS LESS THAN 150' SHALL BE MINIMUM 2-12 AWG, 1-12 AWG EG IN 3/4" C.
 - 20-AMP CIRCUITS 150'-250' SHALL BE MINIMUM 2-10AWG, 1-10 AWG EG IN 3/4" C.
 - 20-AMP CIRCUITS GREATER THAN 250' SHALL BE MINIMUM 2-8 AWG, 1-8 AWG EG IN 3/4" C.
- COORDINATE LOCATION AND ELECTRICAL PLUMBING REQUIREMENTS OF ALL MECHANICAL AND PLUMBING EQUIPMENT WITH MECHANICAL AND PLUMBING CONTRACTORS.
- COORDINATE EQUIPMENT WITH ARCHITECTURAL EQUIPMENT PLANS AND SCHEDULES.
- ELECTRICAL CONTRACTOR SHALL FOLLOW SITE LOCK-OUT/TAG-OUT GUIDELINES TO DEENERGIZE EQUIPMENT.
- ALL RECEPTACLES SHALL HAVE THEIR SOURCE PANEL AND CIRCUIT NUMBER INDICATED ON THEIR FACEPLATE.
- SCHEDULED SHUTDOWNS FOR DEVICE INSTALLATION TO BE APPROVED BY COR AND DEVICE INSTALL TO ALIGN WITH PROJECT PHASING PLAN. SEE G SHEETS FOR MORE INFORMATION.
- COORDINATE ACCEPTED BID ALTERNATE WORK WITH COR. SEE G-001 FOR ALL BID ALTERNATES AND SEE ARCHITECTURAL BID ALTERNATE PLANS FOR HIGHLIGHTED AREAS AFFECTED BY ACCEPTED BID ALTERNATE WORK.

KEY NOTES:

- PROVIDE 2-12 AWG, 1-12 AWG GND, 3/4" C POWER CONNECTION FOR PLUMBING DEVICES. COORDINATE POWER CONNECTION WITH PLUMBING CONTRACTOR.
- PROVIDE 2-12 AWG, 1-12 AWG GND, 3/4" C POWER CONNECTION FOR MECHANICAL GAS PANEL COORDINATE WITH MECHANICAL CONTRACTOR FOR CONNECTION REQUIREMENTS.
- PROVIDE 2-12 AWG, 1-12 AWG GND, 3/4" C TO J-BOX WITH POWER CONNECTION FOR PADS DOOR CONTROLLER AND AUTOMATIC DOOR OPENERS. COORDINATE WITH PHYSICAL ACCESS CONTROLS CONSULTANT ON FINAL LOCATION OF CONTROLLER.
- PROVIDE EQUIPMENT CONNECTION FROM SPECIFIED CIRCUIT UNDER EQUIPMENT NAME EQUIPMENT TO BE CIRCUITED IN SERIES TO LOCAL EQUIPMENT DISCONNECT AS SPECIFIED ON EQUIPMENT CONDUCTOR SCHEDULE. SEE SHEET E-603.
- PROVIDE 2-12 AWG, 1-12 AWG GND, 3/4" C POWER CONNECTION FOR TRAP PRIMER LOCATED UNDER NURSE STATION SINK. COORDINATE WITH PLUMBING CONTRACTOR FOR CONNECTION REQUIREMENTS.
- PROVIDE 2-12 AWG, 1-12 AWG GND, 3/4" C BRANCH CIRCUIT TO POWER FIRE ALARM CONTROL PANEL COORDINATE INSTALLATION WITH FIRE ALARM CONTRACTOR.
- PROVIDE 2-12 AWG, 1-12 AWG GND, 3/4" C BRANCH CIRCUIT TO POWER RELOCATED MASTER MEDICAL GAS ALARM PANEL. COORDINATE WITH PLUMBING CONTRACTOR REGARDING EXTENDING EXISTING CONTROL CIRCUITS FROM PREVIOUS 24/7 NURSES STATION.
- PROVIDE 2-12 AWG, 1-12 AWG GND, 3/4" C BRANCH CIRCUIT TO POWER MEDICAL GAS ALARM PANEL. COORDINATE WITH PLUMBING CONTRACTOR REGARDING TIE-IN OF MED GAS VALVE SENSOR AND MED GAS VALVE CABINET.
- INTERCEPT EXISTING CONTROL CABLES ABOVE CEILING AND PROVIDE SIGNAL BOOSTER DEVICE TO NEW SUPPORT PANEL LOCATION. PROVIDE 1-12 AWG, 1-12 AWG GND, 3/4" C BRANCH CIRCUIT TO POWER SIGNAL BOOSTER.
- PROVIDE 2-12 AWG, 1-12 AWG GND, 3/4" C POWER CONNECTION FOR TRAP PRIMER IN DIALYSIS BOX. COORDINATE WITH PLUMBING CONTRACTOR FOR CONNECTION REQUIREMENTS.
- PROVIDE 2-12 AWG, 1-12 AWG GND, 3/4" C TO J-BOX WITH POWER CONNECTION FOR ROLL-UP DOOR. COORDINATE WITH DOOR INSTALLER.

SCOPE OF WORK LEGEND

NOT IN SCOPE

KEY PLAN

SCALE: NO SCALE

AREA OF WORK

WALL RATING LEGEND

1HR - SMOKE BARRIER
1HR - FIRE BARRIER
2HR - FIRE BARRIER
SMOKE RESISTIVE

FULLY SPRINKLERED
100% BID DOCUMENTS

SHEET NOTES:

- A. SEE INTERIOR ELEVATIONS FOR MOUNTING HEIGHTS OF WALL DEVICES. FOR DEVICES NOT FOUND ON INTERIOR SHEETS INSTALL DEVICES AT STANDARD MOUNTING HEIGHTS FOUND ON TECHNOLOGY SYMBOL LEGEND.
- B. COORDINATE INSTALLATION AND PROGRAMING OF DUAL AUTHENTICATION DOOR CONTROL DEVICES WITH VA.
- C. SCHEDULED SHUTDOWNS FOR DEVICE INSTALLATION TO BE APPROVED BY COR AND DEVICES INSTALL TO ALIGN WITH PROJECT PHASING PLAN. SEE G SHEETS FOR MORE INFORMATION.
- D. COORDINATE ACCEPTED BID ALTERNATE WORK WITH COR. SEE G-001 FOR ALL BID ALTERNATES AND SEE ARCHITECTURAL BID ALTERNATE PLANS FOR HIGHLIGHTED AREAS EFFECTED BY ACCEPTED BID ALTERNATE WORK.
- E. SEE RISER DIAGRAM ON TK601 FOR MORE INFORMATION.

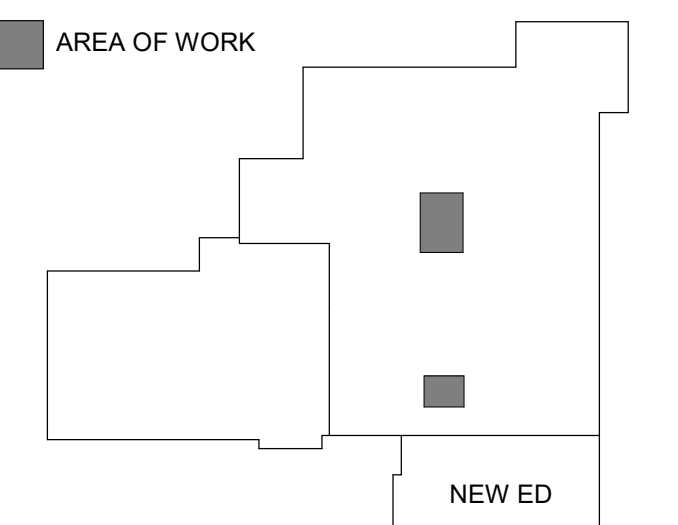
SCOPE OF WORK LEGEND



KEY PLAN

SCALE: NO SCALE

AREA OF WORK



WALL RATING LEGEND



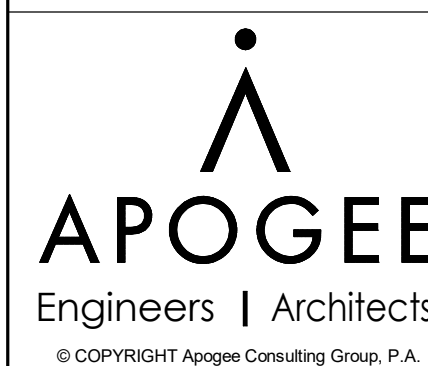
FULLY SPRINKLERED
100% BID DOCUMENTS

1 FIRST FLOOR SECURITY PLAN - PHASE 1

Scale: 1/8" = 1'-0"

CONSULTANTS:

PROJECT MANAGER

ACG Project Number
20-147

Headquarters:
Apogee Consulting Group, P.A.
1151 Kildaire Farm Road, Suite 120
Cary, North Carolina 27511

www.acg-pa.com 919-858-7420

Office of
Construction
and Facilities
Management



Drawing Title
FIRST FLOOR SECURITY PLAN - PHASE
1

Location
CHEYENNE VETERANS AFFAIRS
MEDICAL CENTER
2360 E PERSHING BLVD
CHEYENNE, WY 82001

Project Title
EXPAND EMERGENCY
DEPARTMENT

Approved
Date
MARCH 28, 2024

Checked
JVE

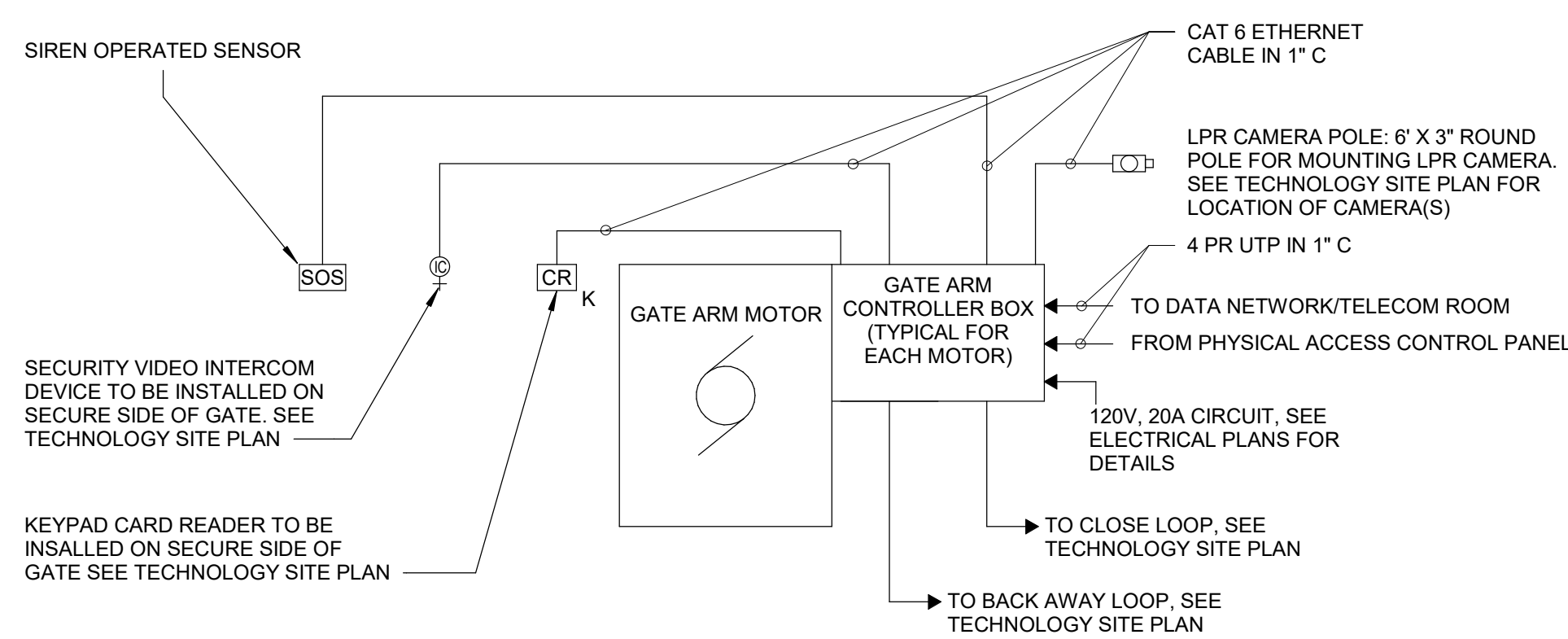
Drawn
JDM

VA PROJECT NUMBER
442-303

Building Number
BUFFALO

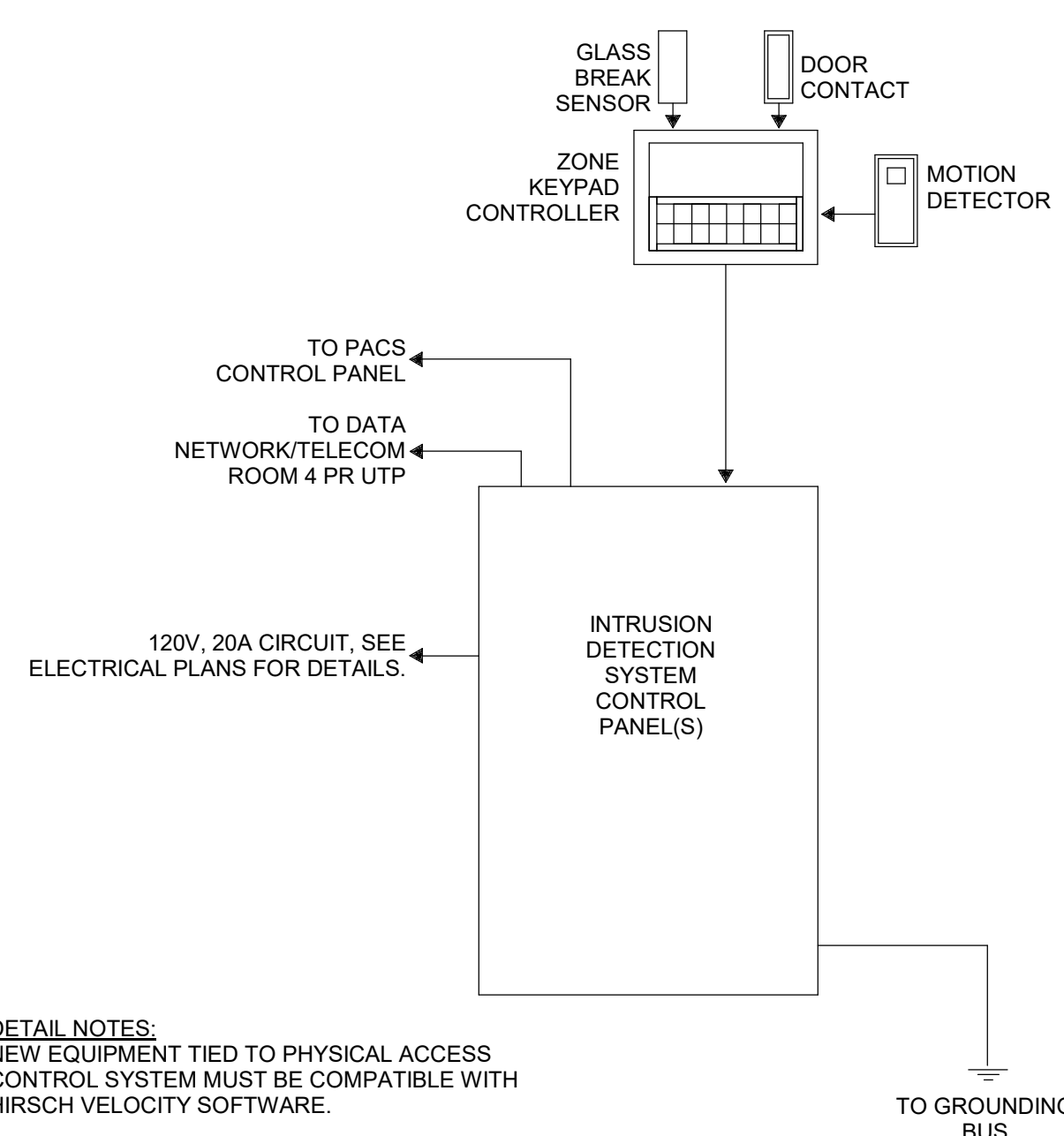
Drawing Number
TP111

Dwg 17 of 29

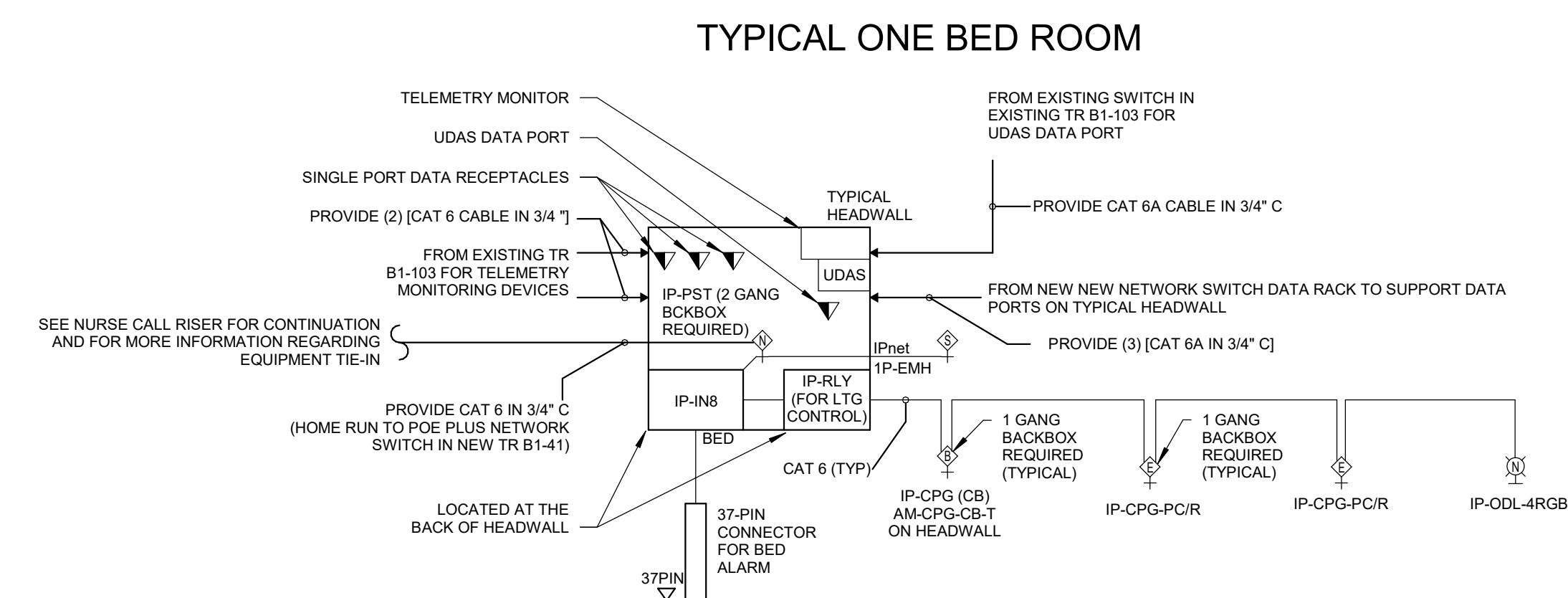


DETAIL NOTES:

- A. PROVIDE AN AIRPHONE AND MASTER STATION. MASTER STATION TO RESIDE IN SCC.
a. INTERCOM AND VIDEO SIGNAL TO CONNECT BACK TO THE SCC FOR GATE ARM OVERRIDE.
- B. PROVIDE AND INSTALL LICENSE PLATE RECOGNITION (ALPR) STANDARD RANGE CAMERA. CAMERA SHALL BE MOUNTED ON THE LPR POLE COORDINATE EXIST MOUNTING HEIGHT AT THE TIME OF INSTALLATION. THIS CAMERA SHALL BE PROGRAMMED AS THE THIRD AUTHENTICATION IN THE TRIPLE AUTHENTICATION PROCESS.
- C. PROVIDE AND INSTALL ACCESS CONTROL TO THIS LOCATION AND INTEGRATE WITH THE OPERATOR'S CONTROLS. INTEGRATIONS SHALL ALLOW THE ACCESS CONTROL SYSTEM TO CONDUCT THE FOLLOWING:
a. POSITION MONITORING
b. REMOTE OPEN
c. OPEN SCHEDULE
d. MAINTAIN OPEN STATE FOR SCHEDULED PERIOD OF TIME
OPEN ON AUTHORIZED AUTHENTICATION

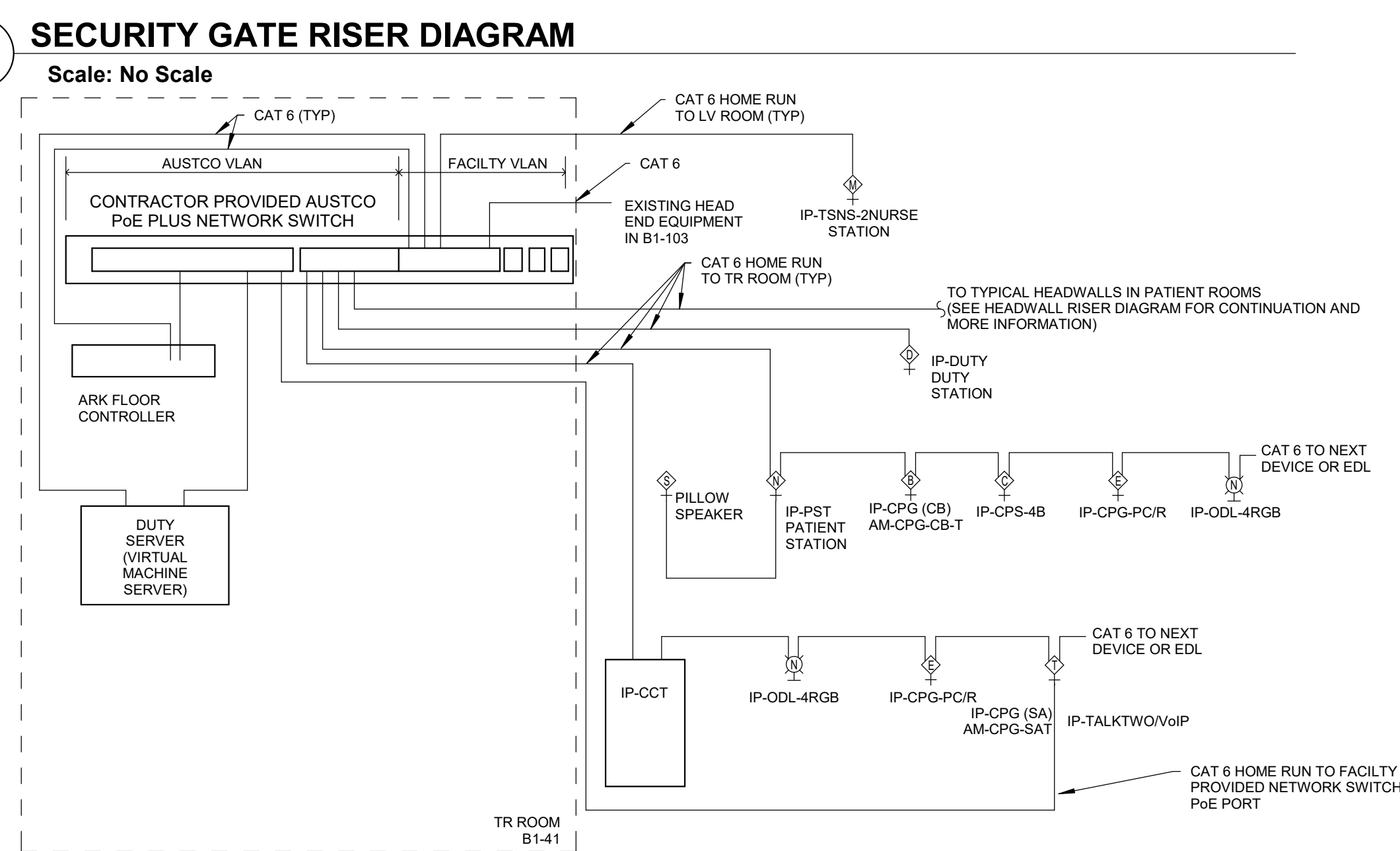


DETAIL NOTES:
NEW EQUIPMENT TIED TO PHYSICAL ACCESS
CONTROL SYSTEM MUST BE COMPATIBLE WITH
HIRSCH VELOCITY SOFTWARE



DETAIL NOTES:

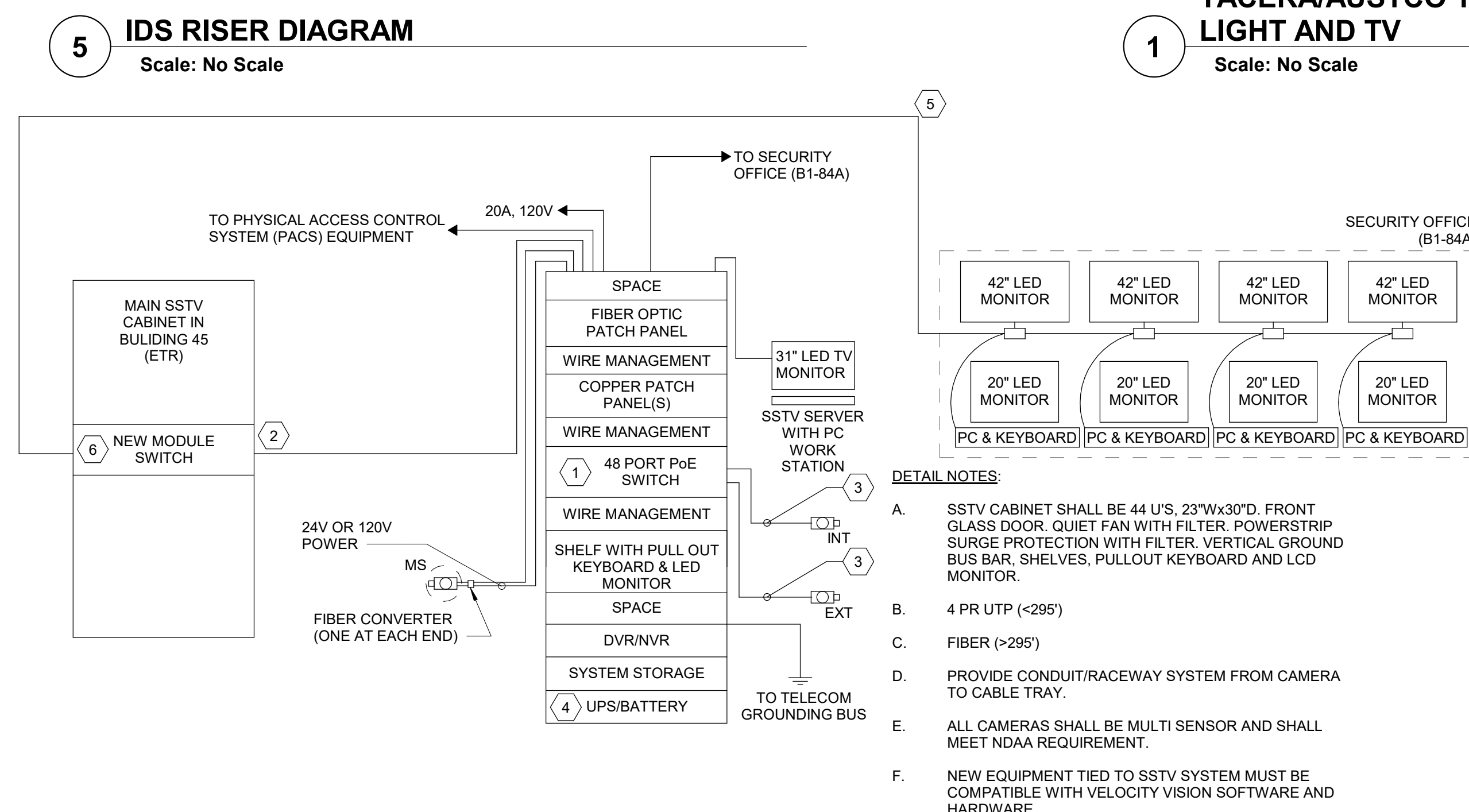
- DETAIL NOTES:**
- A. SEE TYPICAL PATIENT HEADWALL DETAIL ON I-404 FOR MORE INFORMATION ABOUT ADDITIONAL DEVICES IN PATIENT HEADWALLS.
 - B. PROVIDE CONDUIT (C) WITH GROMMET AT STUB UP ABOVE ACCESSABLE CEILING. CONDUIT TO BE ROUTED AND ROUGHED INTO THE SIDES OF THE HEADWALL.
 - C. COORDINATE WITH HEADWALL INSTALLER.
 - C. CABLE COLORING FOUND ON TK001



DETAIL NOTES:

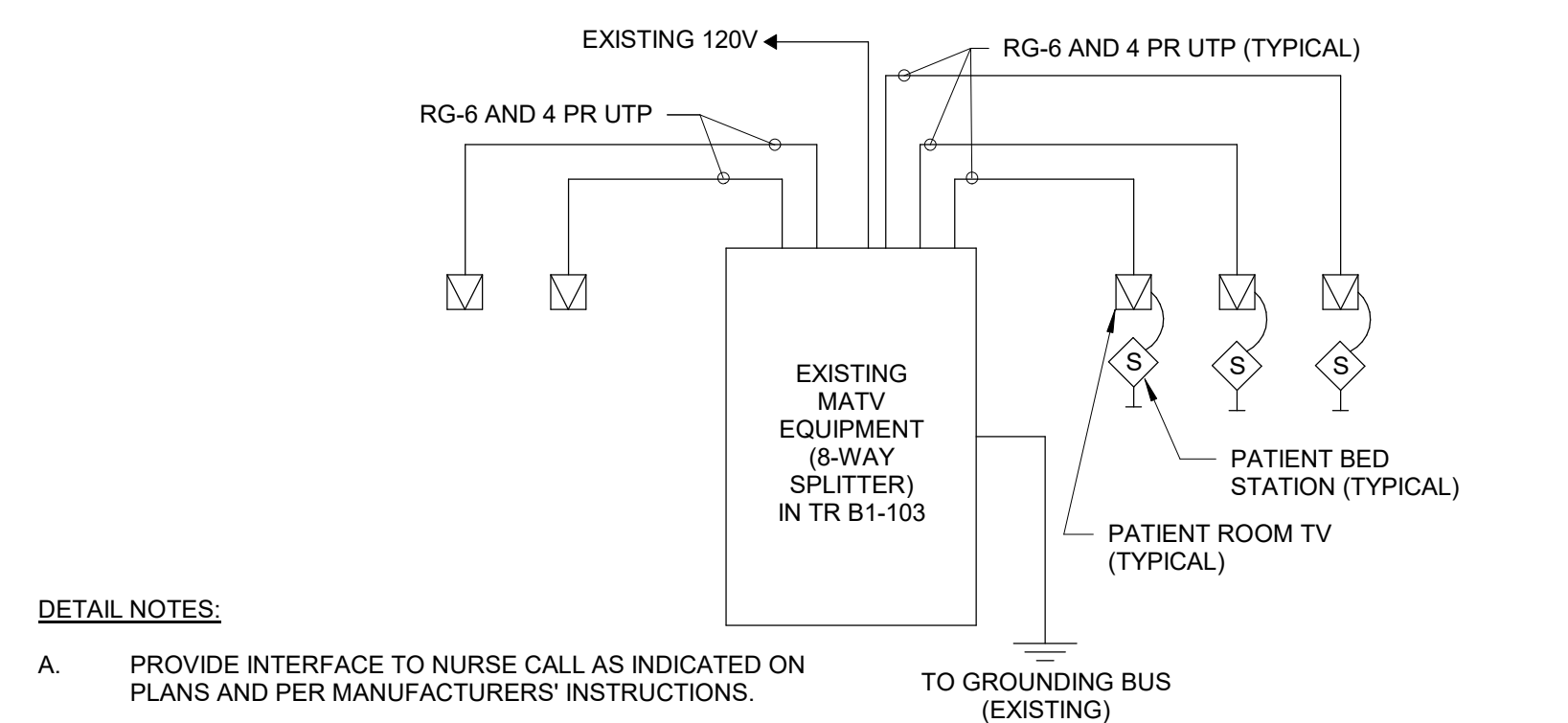
A. CONTACT STERLING COMMUNICATION TECHNOLOGIES FOR ALL INSTALLATION OF TACERA/AUSTCO DEVICES AND SYSTEM.

a. POC: HAL WINFORD (O: (303) 384-3404, C: (720) 391-3297).



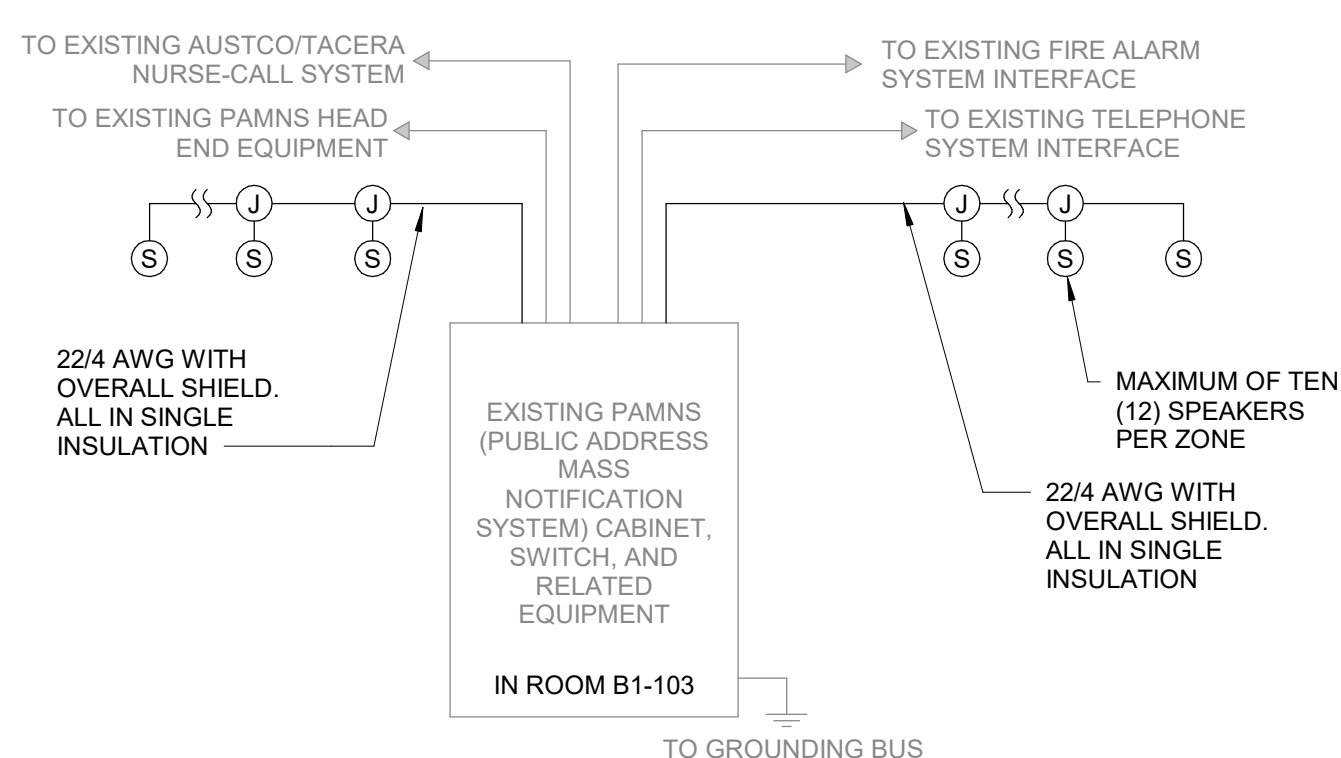
DETAIL NOTES:

- A. SSTV CABINET SHALL BE 44 U.S., 23Wx30"D, FRONT GLASS DOOR, QUIET FAN WITH FILTER, POWERSTRIP SURGE PROTECTION WITH FILTER, VERTICAL GROUND BUS BAR, SHELVES, PULLOUT KEYBOARD AND LCD MONITOR.
- B. 4 PR UTP (<295')
- C. FIBER (>295')
- D. PROVIDE CONDUIT/RACEWAY SYSTEM FROM CAMERA TO CABLE TRAY.
- E. ALL CAMERAS SHALL BE MULTI SENSOR AND SHALL MEET NDA4 REQUIREMENT.
- F. NEW EQUIPMENT TIED TO SSTV SYSTEM MUST BE COMPATIBLE WITH VELOCITY VISION SOFTWARE AND HARDWARE.



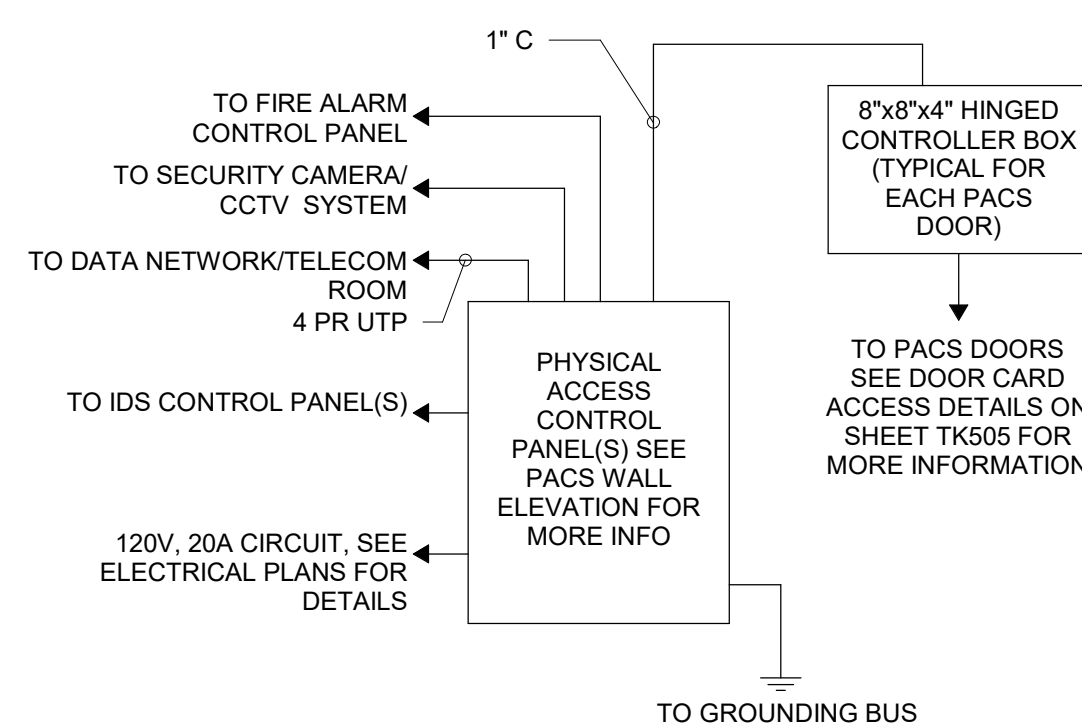
DETAIL NOTES:

- A. PROVIDE INTERFACE TO NURSE CALL AS INDICATED ON PLANS AND PER MANUFACTURERS' INSTRUCTIONS.
- B. PROVIDE MINIMUM (2) 8-WAY PLITTERS TO BE ADDED TO THE EXISTING MATV EQUIPMENT TO SERVE THE ADDITIONAL TV'S.




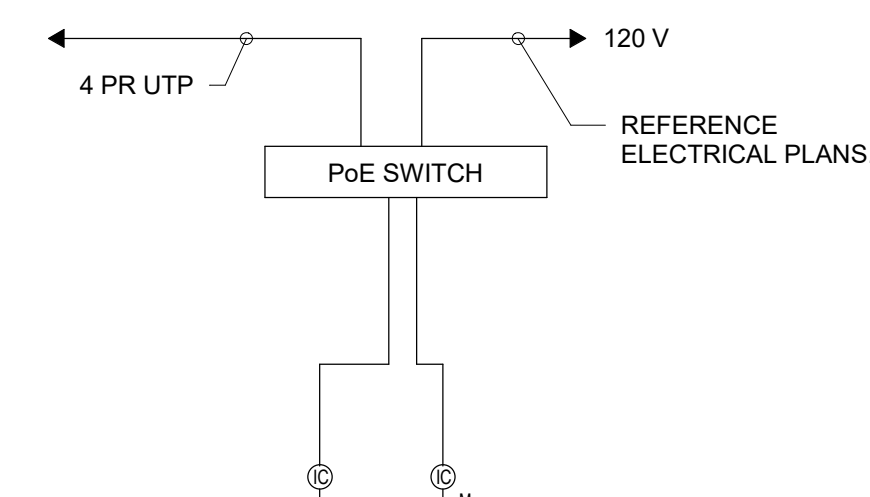
DETAIL NOTES:

- A. NEW SPEAKERS TO BE VALCOM 2X2 DROP TILE SPEAKERS WITH SELF AMPLIFIED FUNCTION.
- B. NEW SPEAKERS TIE BACK TO EXISTING VALCOM SWITCH IN EXISTING TR B1-103. COORDINATE WITH FACILITY FOR DEVICE TIE-IN.
- C. NEW SPEAKERS TO HAVE WATTAGE TAPS FOR INTERGRATING INTO THE EXISTING FIRE EMERGENCY VOICE/ALARM COMMUNICATION SYSTEM, AND MEET NFPA 101 CHAPTER 18 AND 20 FOR VOICE EVACUATION SYSTEM REQUIREMENTS.



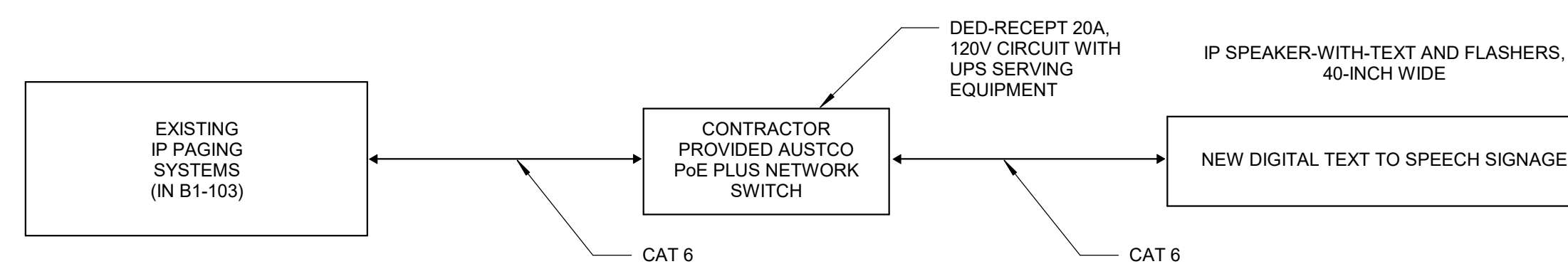
DETAIL NOTES:

- A. NEW EQUIPMENT TIED TO PHYSICAL ACCESS CONTROL SYSTEM MUST BE COMPATIBLE WITH HIRSCH VELOCITY SOFTWARE.
-  B. BASIS OF DESIGN IS HIRSCH IDENTIV.



DETAIL NOTES

- A. ALL CABLING SHALL BE 4PR UTP CAT6A.
- B. PoE SHALL BE MOUNTED IN THE IT ROOM.
B.O.D. CISCO 4300-24 PoE OR EQUAL.
- C. INTERCOM STATION SHALL BE RECESSED IN
2 GANG BOX. B.O.D. AIPHONE IX-SS-2G OR
EQUAL.
- D. MASTER STATION SHALL BE EITHER DESK O
WALL MOUNT. B.O.D. AIPHONE IX-MV(DESK)
OR IX-MV7-W(WALL) OR EQUAL.
- E. PROVIDE ADAPTERS, POWER SUPPLIES,
BACK BOXES & RELATED MATERIALS FOR A
COMPLETE AND OPERATIONAL SYSTEM.



10 VALCOM DISPLAY RISER DIAGRAM
Scale: No Scale



Scale: No Scale



Scale: No Scale



Scale: No Scale

SHEET NOTES:

- A. SEE SHEET TK001 FOR ALTERNATE NOTES.
- B. PROVIDE MINIMUM OF 25' OF CABLE IN EACH COMMUNICATION HANDHOLE. SUPPORT CABLE ON SUPPORT RACK.
- C. ALL CABLE SPLICING SHALL BE WATERTIGHT.
- D. CONDUIT (DUCT BANK) SHALL NOT BE ENCASED IN CONCRETE.
- E. CONTRACTOR TO PROVIDE ALL PATCHING/REPAIRS TO MATCH EXISTING CONDITIONS FOR CONDUITS INSTALLED ON EXISTING WALLS.

 KEY NOTES:

- 1 PROVIDE AND INSTALL NEW POE MID-SPAN DEVICE WITH POWER CORD INTO NEW CCTV CABINET.
- 2 NEW 12 STRAND MM FIBER (OM4) 4.4 PR UTP TO NEW MODULE SWITCH IN EXISTING MAIN CCTV CABINET LOCATED IN INDICATED IT ROOM.
- 3 PROVIDE CAT 6A COPPER CABLES FROM POE MID-SPAN DEVICE TO CAMERA.
- 4 PROVIDE FLOOR MOUNTED 5 KVA UPS WITH POWER CORD.
- 5 RUN CAT 6A CABLEING FROM SPARE PORTS IN EXISTING SWITCH OR PATCH PANEL TO NEW TELECOMMUNICATIONS OUTLET.
- 6 PROVIDE AND INSTALL NEW MODULE SWITCH INTO EXISTING MAIN SSTV CABINET.

FULLY SPRINKLERED
100% BID DOCUMENTS

[illegible]

FIRE ALARM SYSTEM INPUT/OUTPUT MATRIX							
INPUT DEVICE ↓	OUTPUT →						
	1. SOUND GENERAL BUILDING ALARM FOR OCCUPANTS (NON-HEALTH CARE) (SEE SECTION 7.2.1)	2. NOTIFY NECESSARY STAFF FOR RESPONSE FOR HEALTHCARE AND NON-HEALTHCARE ONLY (ALARM SIGNAL MAY BE DIFFERENT ON DIFFERENT FLOORS)	3. NOTIFY FIRE DEPARTMENT	4. INITIATE SUPPLEMENTAL SIGNAL TO A 24-HOUR MANAGED POINT FOR IMMEDIATE RESPONSE	5. CLOSE ASSOCIATE SMOKE/HEAT DETECTORS ON THE FLOOR	6. CLOSE DAMPERS ON FAN/ROOF EXHAUST DETECTOR	7. SHUT DOWN AIR HANDLING UNIT BY THE DETECTOR
DUCT SMOKE DETECTOR *				X		X	Xa
AREA SMOKE DETECTOR *	X	X	X				
DOOR RELEASE SMOKE DETECTOR *	X	X	X		X	X	
ELEVATOR SMOKE DETECTOR *	X	X	X				X
MANUAL PULL STATION	X	X	X		X		
ELEVATOR MACHINE ROOM HEAT DETECTOR	X	X	X				
GENERATOR ROOM HEAT DETECTOR	X	X	X				
SPRINKLER WATERFLOW/PRESSURE SWITCH	X	X	X		X		
WATER CONTROL VALVE TAMPER				X			
FIRE PUMP (ANY ALARM CONDITION REQUIRED BY (NFPA 20)				X			
HIGH/LOW PRESSURE DRY-PIPE SPRINKLER SYSTEM			X				
KITCHEN HOOD SUPPRESSION SYSTEM	X	X	X		X		
GAS EXTINGUISHING SYSTEMS	X	X	X		X		
DRY-PIPE VALVE ROOM TEMPERATURE ALARM				X			
DEDICATED FIRE WATER STORAGE TANK LOW LEVEL				X			
DEDICATED FIRE WATER STORAGE TANK LOW TEMPERATURE				X			
* WHILE NFPA 101 DOES NOT REQUIRE SOME DETECTORS TO NOTIFY BUILDING OCCUPANTS, VA REQUIRES ALL SMOKE DETECTORS, OTHER THAN DUCT SMOKE DETECTORS, TO NOTIFY BUILDING OCCUPANTS AS REQUIRED BY THE LIFE SAFETY CODE OR ITS REFERENCES. * THOSE DOORS THAT ARE REQUIRED TO BE TIED TO THE FIRE ALARM SYSTEM SUCH AS DELAYED EGRESS AND ACCESS CONTROLLED DOORS. a - DO NOT PROVIDE DUCT DETECTORS IN DEDICATED (100%) EXHAUST FANS, THEY SHOULD CONTINUE TO RUN.							

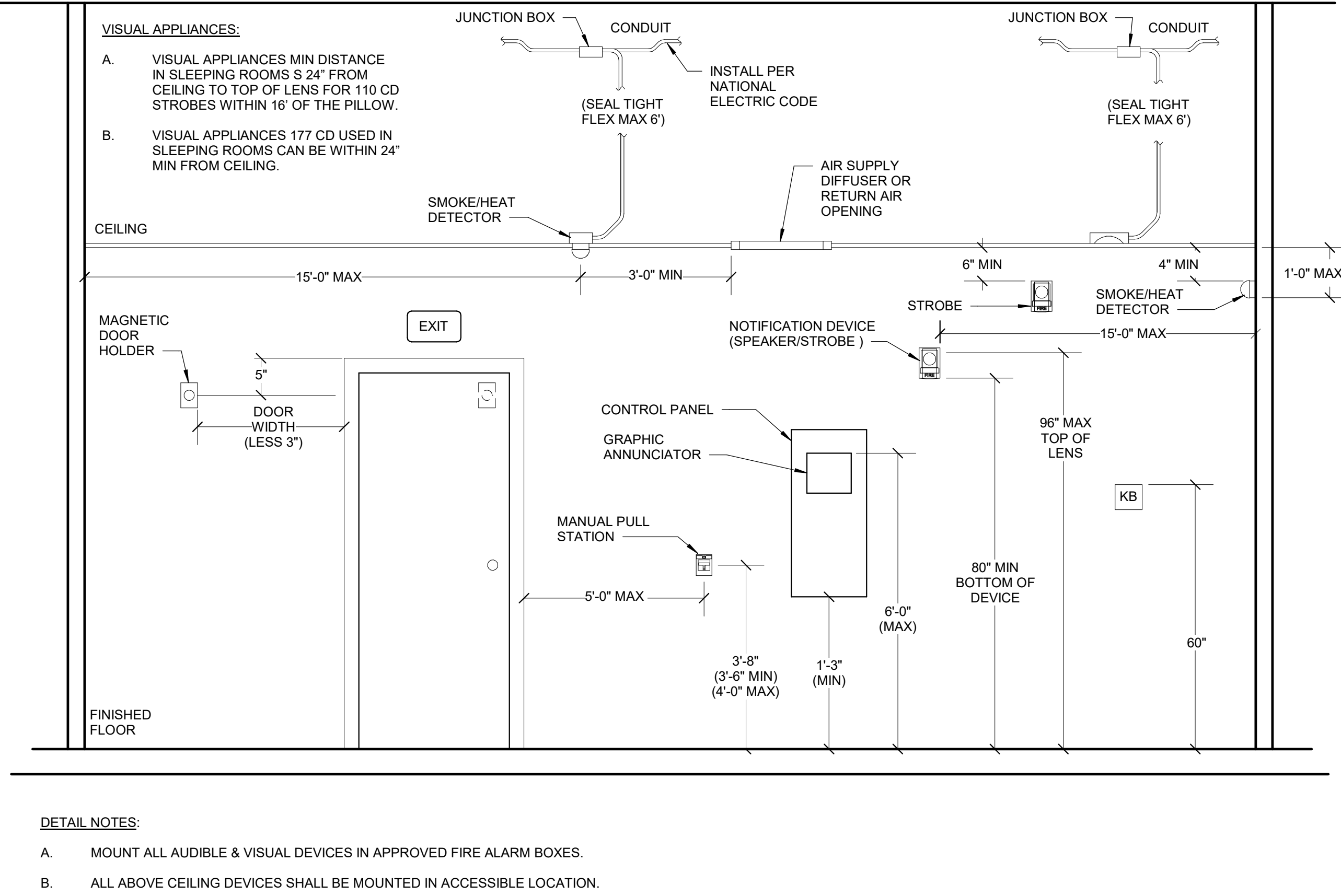
FIRE ALARM ABBREVIATIONS LIST			
ACC	ACCESSIBLE	MISC	MISCELLANEOUS
ACL	ABOVE CEILING	MT	MOUNT
A/E	ARCHITECT/ENGINEER	N	NEW DEVICES
AFF	ABOVE FINISHED FLOOR	NAC	NETWORK APPLIANCE CIRCUIT
AHU	AIR HANDLING UNIT	NCA	NETWORK CONTROL ANNUNCIATOR
AL	ALUMINUM	NS	NO SCALE
ALT	ALTERNATE	NTS	NOT TO SCALE
AMP	AMPERE	OC	ON CENTER
APPRX	APPROXIMATELY	OD	OUTSIDE DIAMETER
ARCH	ARCHITECT, ARCHITECTURAL	OH	OVERHEAD
AUTO	AUTOMATIC	PA	PUBLIC ADDRESS
AUX	AUXILIARY	PB	PULL BOX OR PUSHBUTTON
AV	AUDIO VISUAL	PV	POST INDICATING VALVE
BOD	BASIS OF DESIGN	PVC	POLYVINYL CHLORIDE (CONDUIT)
C	CONDUIT	QTY	QUANTITY
CAB	CABINET	R	REMOVE AND REPLACE IN NEW LOCATION
CD	CONSTRUCTION DOCUMENTS	RCP	REFLECTED CEILING PLAN
CF	CONTRACTOR-FURNISHED	REQD	REQUIRED
CKT	CIRCUIT	RGS	RIGID GALVANIZED STEEL
CLG	CEILING	RM	ROOM
CO	CONTRACTING OFFICE	SC	SURFACE CONDUIT
COR	CONTRACTING OFFICER REPRESENTATIVE	SF	SQUARE FEET/FOOT
dB	DECIBEL	SH	SHEET
DN	DOWN	SI	INTERNATIONAL SYSTEM OF UNITS
DVC	DIGITAL VOICE COMMAND	SM	SIMILAR
E	EXISTING DEVICES	SPEC	SPECIFICATION
ELEV	ELEVATOR	SPKR	SPEAKER
ETR	EXISTING TO REMAIN	SR	SURFACE RACEWAY
FA	FIRE ALARM	SS	STAINLESS STEEL
FACP	FIRE ALARM CONTROL PANEL	STD	STANDARD
FAAP	FIRE ALARM ANNUNCIATOR PANEL	SURF	SURFACE MOUNTED
FAGAP	FIRE ALARM GRAPHIC ANNUNCIATOR PANEL	SYM	SYMMETRICAL
FO	FIBER OPTIC	SYS	SYSTEM
J-BOX	JUNCTION BOX	TC	TIMECLOCK
TEL	TELEPHONE	TP	TWISTED PAIR
MAX	MAXIMUM	TPS	TWISTED PAIR SHIELDED
MC	MECHANICAL CONTRACTOR	TR	TAMPER RESISTANT
METAL-CLAD (CONDUIT)		TYP	TYPICAL
MECH	MECHANICAL	UL	UNDERWRITER'S LABORATORY
MFR	MANUFACTURER	UTP	UNSHIELDED TWISTED PAIR
MIN	MINIMUM		

FIRE ALARM SYMBOL LEGEND		
SYMBOL	HEIGHT	DESCRIPTION
	42"-48"	FIRE ALARM PULL STATION
	90"	FIRE ALARM SPEAKER
	90"	FIRE ALARM STROBE
	90"	FIRE ALARM SPEAKER AND STROBE
		XX - CANDELA XX - WATTAGE
		FIRE ALARM DOOR OPEN HOLDER
		FIRE ALARM PHOTOELECTRIC SMOKE DETECTOR
		FIRE ALARM HEAT DETECTOR
		FIRE ALARM CEILING MOUNTED SPEAKER
		FIRE ALARM DUCT SMOKE DETECTOR
	6"	FIRE ALARM CONTROL PANEL
	6"	FIRE ALARM NAC PANEL
	6"	FIRE ALARM ANNUNCIATOR PANEL
	6"	FIRE ALARM GRAPHIC ANNUNCIATOR PANEL
		FLOW SWITCH
		TAMPER SWITCH
		POST INDICATOR VALVE
	6"	REMOTE LIGHT/TEST SWITCH FOR DUCT DETECTORS
	90"	FIRE ALARM BELL
		FLOW SWITCH
		TAMPER SWITCH
	60"	KNOX BOX
	60"	RELAYS
ALL HEIGHTS ARE TO CENTER OF DEVICE UNLESS NOTED OTHERWISE. ANY HEIGHTS INDICATED IN PLANS SHALL SUPERSEDE THOSE LISTED HERE.		

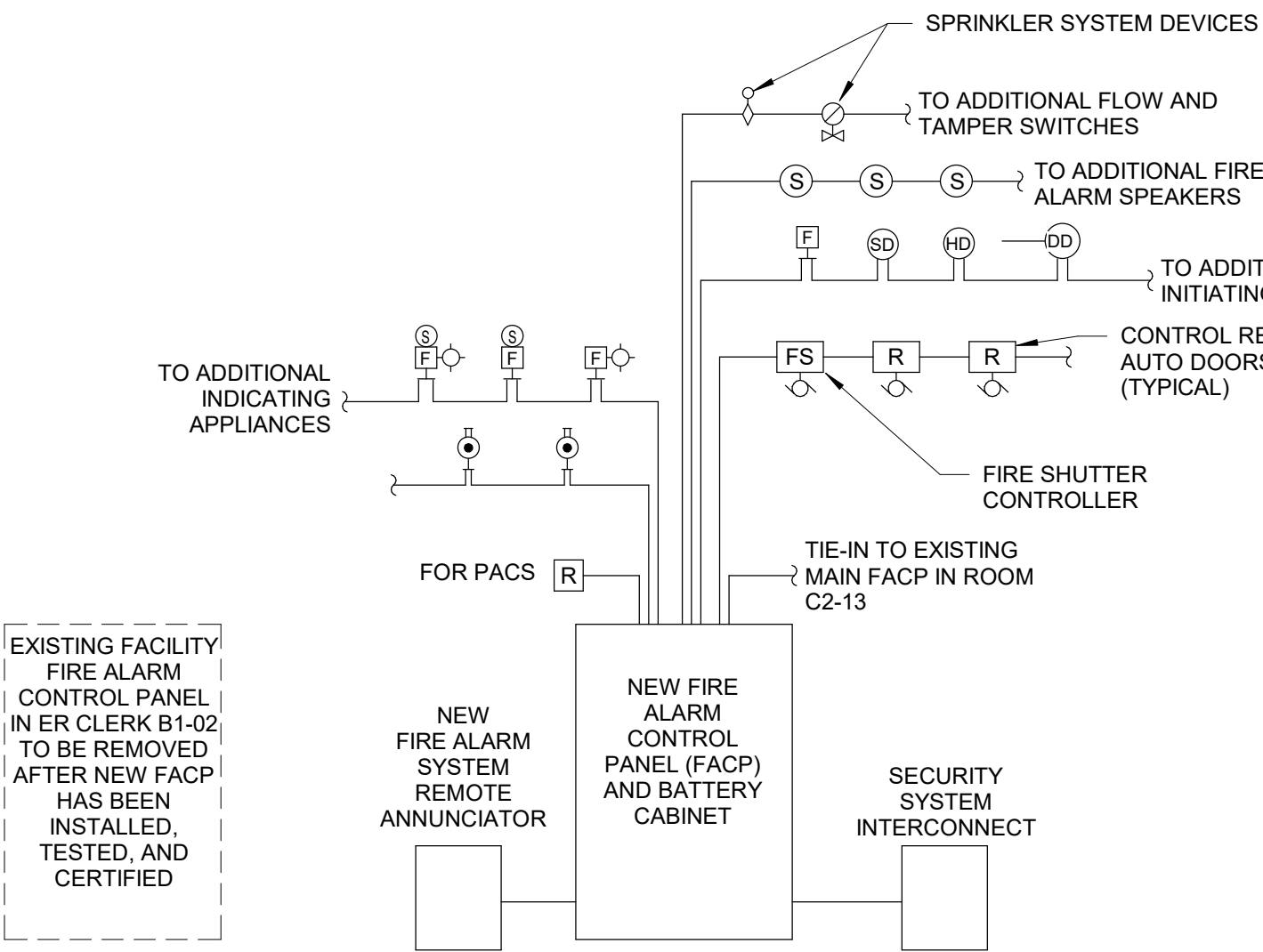
FIRE ALARM GENERAL NOTES	
1. PROVIDE FIRE ALARM SYSTEM AND COMPONENTS COMPLYING WITH THE LATEST: A. NFPA 13- STANDARD FOR THE INSTALLATION OF SPRINKLER SYSTEMS. B. NFPA 14- STANDARD FOR THE INSTALLATION OF STANDPIPE AND HOSE SYSTEM. C. NFPA 20- STANDARD FOR THE INSTALLATION OF STATIONARY PUMPS FOR FIRE PROTECTION. D. NFPA 70 NATIONAL ELECTRICAL CODE. E. NFPA 72 NATIONAL FIRE ALARM AND SIGNALING CODE. F. NFPA 90A STANDARD FOR THE INSTALLATION OF AIR CONDITIONING AND VENTILATING SYSTEMS. G. NFPA 101 LIFE SAFETY CODE. H. VA FIRE PROTECTION DESIGN MANUAL. I. ANSI S3.41 AUDIBLE EMERGENCY EVACUATION SIGNAL.	
2. FIRE ALARM SYSTEM SHALL COMPLY WITH FACTORY MUTUAL RESEARCH CORPORATION (FM).	
3. PROVIDE FIRE ALARM WIRING IN CONDUIT, FACTORY PAINTED RED.	
4. BEFORE STARTING WORK, TEST EXISTING FIRE ALARM SYSTEM IN WORK AREA AND ADJACENT AREAS.	
5. NOTIFY COR REGARDING DEFICIENCIES AND NON-OPERATING COMPONENTS. VA WILL MAKE REPAIRS.	
6. CONTRACTOR TO ENSURE THAT ALL NEW FIRE ALARM SPEAKERS, TONES, AND STROBES ARE IN-SYNC WITH ALL ADJACENT AREAS BEYOND THE AREA OF WORK. WHEN WORK IS COMPLETE, TEST EXISTING FIRE ALARM SYSTEM IN WORK AREA AND ADJACENT AREAS.	
7. MAKE REPAIRS TO RESOLVE INCORRECT SYSTEM OPERATIONS AT NO ADDITIONAL COST.	
8. THE FIRE ALARM SYSTEM VENDOR/CONTRACTOR SHALL TERMINATE, TEST AND PROGRAM ALL NEW FIRE ALARM DEVICES. COORDINATE WITH COR.	
9. CONNECT SPRINKLER SYSTEM SUPERVISORY DEVICES TO THE FIRE ALARM SYSTEM. COORDINATE LOCATION WITH THE SPRINKLER CONTRACTOR.	
10. CONNECT ALL ELECTROMAGNETIC DOOR HOLD OPEN DEVICES TO THE FIRE ALARM SYSTEM. COORDINATE WITH THE DOOR HARDWARE CONTRACTOR.	
11. PROVIDE RELAY CONTROL MODULES FOR PACS, COORDINATE WITH PHYSICAL ACCESS CONTROL SYSTEM (PACS), CONTRACTOR AND COR.	
12. PROVIDE RELAY CONTROL MODULES FOR COOKING POWER SUPPLY SHUT OFF.	
13. PROVIDE RELAY CONTROL MODULES FOR KITCHEN HOOD FIRE SUPPRESSION SYSTEM.	
14. THE OPERABLE PART OF A MANUAL ACTUATED ALARM INITIATING DEVICE SHALL BE NOT LESS THAN 42" (1.07M) AND NOT MORE THAN 48" (1.22M) FROM FINISH FLOOR.	
15. FOR LOCATION (CORRIDOR, ROOM OR ADJACENT SPACE) WITH TWO OR MORE VISIBLE FIRE ALARM NOTIFICATION APPLIANCES WITHIN THE FIELD OF VIEW, PROGRAM VISIBLE TO FLASH IN SYNCHRONIZATION.	
16. PROVIDE NEW FIRE ALARM SYSTEM DEVICES, FIRE ALARM PANEL, NAC PANEL, POWER SUPPLY, FOR A COMPLETE FIRE AND DETECTION SYSTEM. RED CONDUIT AND JUNCTION BOXES, COVERPLATES, LABELING, CABLING BOTH COPPER AND FIBER, PROGRAMMING, SOFTWARE, LICENSES, FIRE AND SMOKE RATED SLEEVE ASSEMBLIES, CABLING, COVER, JACKS, TERMINATIONS, TESTING AND RELATED MATERIALS FOR SPECIFICATIONS.	

★ **ALTERNATE NOTES**

- NEW EMERGENCY POWER PANEL EHP-4 REMOVED FROM THE SCOPE. THIS INCLUDES REMOVING ATS-DPEHB3, DISTRIBUTION BOARD DPEHB3, AND ASSOCIATED NEW FEEDER.
- MEN'S & WOMEN'S STAFF LOCKERS, WEAPON STORAGE LOCKERS, AND POLICE SUITE LOCKERS REMOVED FROM THE SCOPE FOR PURCHASE AND INSTALLATION.
- ELIMINATE FRONT ENTRANCE CANOPY INCLUDING THE WRAP-AROUND SUNSCREEN PERGOLA AND COLUMNS. THE CURRENT FRONT ENTRANCE CANOPY IS 817 SQ. FT.
- ELIMINATE THE RENOVATION TO THE SECURITY CONTROL CENTER (SCC). THE POLICE FUNCTIONS ARE TO REMAIN AS THEY CURRENTLY EXIST AND ARE NOT TO EXPAND. ALL WORK FOR ARCHITECTURAL, ELECTRICAL, MECHANICAL, PLUMBING, LOW VOLTAGE, AND FIRE PROTECTION FOR THIS AREA WILL BE REMOVED. THE PROPOSED SCC SPACE TO BE RENOVATED IS APPROXIMATELY 421 SQ. FT.
- ELIMINATE THE RENOVATION TO THE POLICE SUITE. THE POLICE FUNCTIONS ARE TO REMAIN AS THEY CURRENTLY EXIST AND WOULD NOT EXPAND. ALL WORK FOR ARCHITECTURAL, ELECTRICAL, PLUMBING, LOW VOLTAGE, AND FIRE PROTECTION FOR THIS AREA WILL BE REMOVED. MINOR DUCT MODIFICATIONS WILL NEED TO BE PERFORMED TO DEMOLISH AND RECONNECT THE EXISTING SUPPLY/RETURN DUCTWORK TO THE NEW MAINS INSTALLED DURING PHASE 3. THE PROPOSED POLICE SPACE TO BE RENOVATED IS APPROXIMATELY 2,572 SQ. FT.
- ELIMINATE THE RENOVATIONS IN THE EXISTING EMERGENCY DEPARTMENT (ED). THE TEMPORARY AHU WILL BE REQUIRED TO SERVE THE EXISTING ED WHILE AHU-4 IS BEING DEMOLISHED AND THE NEW AHU IS BEING INSTALLED. ALL MAJOR DUCTWORK FROM EXISTING AHU-6 SHALL BE DEMOLISHED TO ACCOMMODATE THE NEW DUCTWORK FOR THE NEW AHU THAT WILL SERVE THE EXISTING ED AND THE NEW ADDITION. TO THE MAXIMUM EXTENT PRACTICAL, ALL EXISTING VAVS SHALL REMAIN AND BE RECONNECTED TO THE NEW DUCT MAINS. THE CANTEN STORE AND STORAGE AREAS SHALL BE DISCONNECTED FROM AHU-4 AND RECONNECTED TO THE NEW AHU. EMERGENCY SUPPORT SPACE AS CURRENTLY DESIGNED IS APPROXIMATELY 1,750 SQ. FT.



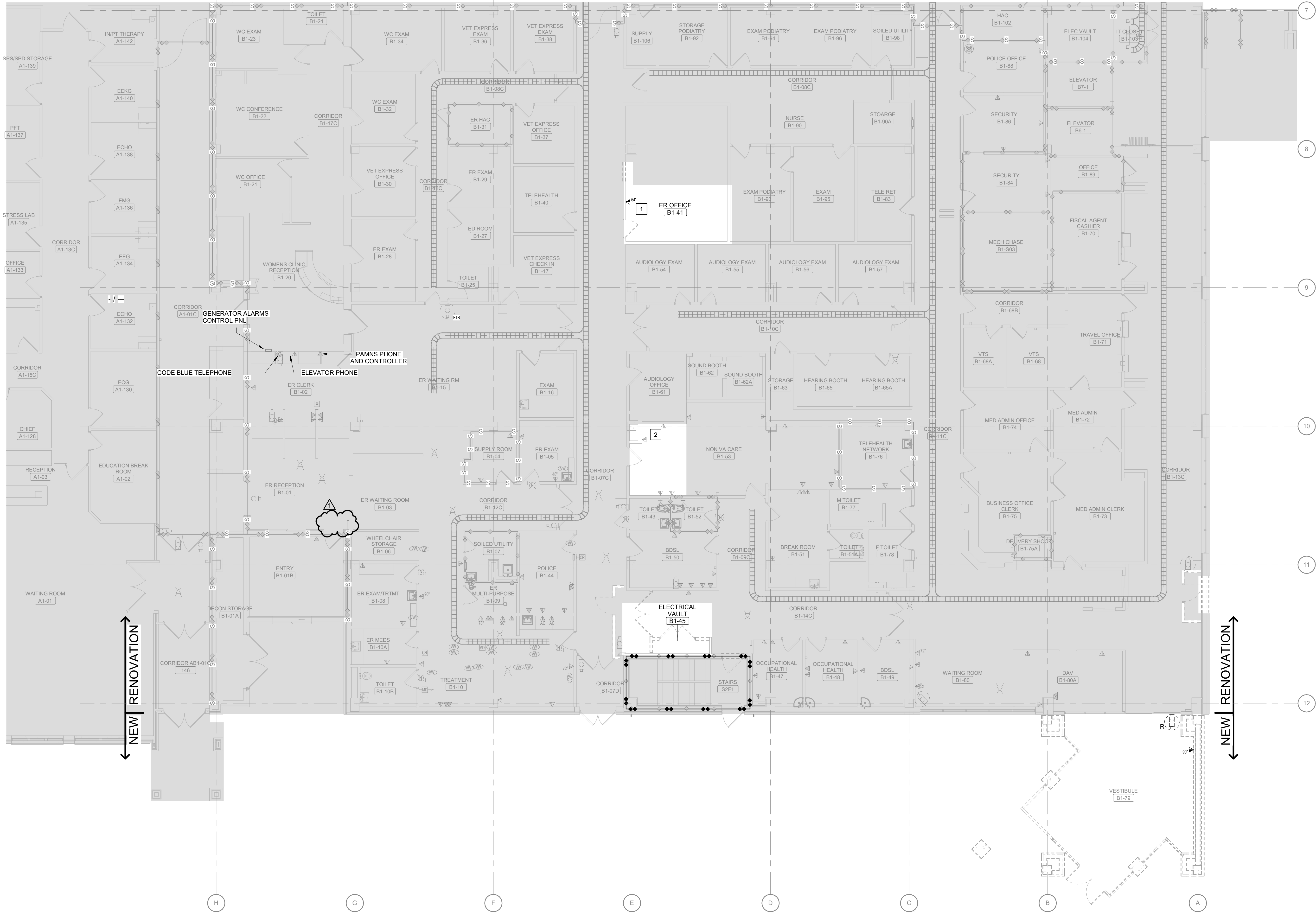
2 FIRE ALARM DEVICE MOUNTING HEIGHTS
Scale: No Scale



1 FIRE ALARM RISER
Scale: No Scale

**FULLY SPRINKLERED
100% BID DOCUMENTS**

CONSULTANTS:			PROJECT MANAGER			Office of Construction and Facilities Management			Drawing Title FIRE ALARM GENERAL NOTES, SYMBOL LEGEND, AND RISER			Project Title EXPAND EMERGENCY DEPARTMENT			VA PROJECT NUMBER 442-303		
			APOGEE Engineers Architects			U.S. Department of Veterans Affairs			Location CHEYENNE VETERANS AFFAIRS MEDICAL CENTER 2360 E PERSHING BLVD CHEYENNE, WY 82001			Approved			Drawing Number FA001		
			Headquarters: Apogee Consulting Group, P.A. 1151 Kildaire Farm Road, Suite 120 Cary, North Carolina 27511									Date MARCH 28, 2024			Checked JVE		
			ACG Project Number 20-147									Drawn JDM			Dwg 1 of 13		
1 ADDENDUM 1 10/22/24																	
# Revisions: Date																	



1 FIRST FLOOR TECHNOLOGY DEMOLITION PLAN - PHASE 1
Scale: 1/8" = 1'-0"



SHEET NOTES:

- A. ALL DEVICES SHOWN TO BE DEMOLISHED UNLESS NOTED OTHERWISE.
- B. DEVICES SHOWN WITH LIGHT GRAY LINES ARE EXISTING TO REMAIN. DEVICES SHOWN WITH DARK, DASHED LINES ARE EXISTING TO BE DEMOLISHED. DEMOLITION SHALL INCLUDE, BUT NOT BE LIMITED TO, THOSE DEVICES AND SYSTEMS SHOWN. COORDINATE WITH ALL OTHER DISCIPLINES.
- C. EXISTING CONDITION DRAWINGS ARE BASED ON THE BEST AVAILABLE RECORD DRAWINGS THAT WERE PROVIDED TO THE DESIGN TEAM BY THE VA AND BEST AVAILABLE INFORMATION DURING SITE SURVEY. VERIFY ALL EXISTING CONDITIONS.
- D. REMOVE ALL DEVICES, CONDUIT, AND WIRE BACK TO SOURCE.
- E. TURN ALL EQUIPMENT (CAMERAS, WAP, ETC) OVER TO COR. ALL EXISTING CABLING TO BE REMOVED BACK TO SOURCE.
- F. CONTRACTOR TO SUPPORT REMAINING STRUCTURED CABLE WITHIN DEMOLISHED CABLE TRAY WITH J-HOOKS. SEE DETAIL 7/TK502 FOR MORE INFORMATION.

KEY NOTES:

1. RELOCATED EXISTING TELEMETRY PHILLIPS MONITOR FROM ER OFFICE B1-41A TO TEMPORARY DCU BOX LOCATION IN NON VA CARE B1-53. DISCONNECT AND REMOVE EXISTING TELEMETRY DATA OUTLET. EXTEND TELEMETRY DATA CABLING FROM EXISTING LOCATION TO NEW TEMPORARY LOCATION. SEE TK111 FOR ADDITIONAL INFORMATION OF EQUIPMENT RELOCATION.
2. SEE TK101 FOR RELATED TEMPORARY TELEMETRY WORK.

SCOPE OF WORK LEGEND

NOT IN SCOPE

SHEET LEGEND

X = R, N
R: EXISTING DEVICE TO BE DISCONNECTED AND HANDED OVER TO OIT
N: DEVICE TO BE INSTALLED BY OIT COORDINATE WITH COR FOR CABLE ROUTING AND COIL LOCATIONS (SEE TK101 SHEET FOR MORE INFORMATION)

KEY PLAN

SCALE: NO SCALE

AREA OF WORK

WALL RATING LEGEND

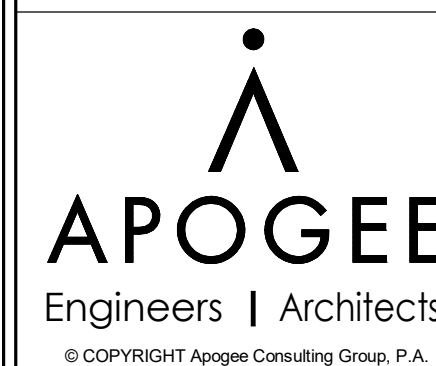
1 HR - SMOKE BARRIER
1 HR - FIRE BARRIER
2 HR - FIRE BARRIER
SMOKE RESISTIVE

**FULLY SPRINKLERED
100% BID DOCUMENTS**

CONSULTANTS:

PROJECT MANAGER

ACG Project Number
20-147



Headquarters:
Apogee Consulting Group, P.A.
1151 Kildaire Farm Road, Suite 120
Cary, North Carolina 27511

www.acg-pa.com 919-858-7420

Office of
Construction
and Facilities
Management



Drawing Title
**FIRST FLOOR TECHNOLOGY
DEMOLITION PLAN - PHASE 1**

Location
**CHEYENNE VETERANS AFFAIRS
MEDICAL CENTER
2360 E PERSHING BLVD
CHEYENNE, WY 82001**

Project Title
**EXPAND EMERGENCY
DEPARTMENT**

Approved
Date
MARCH 28, 2024

Checked
JVE
Drawn
JDM

VA PROJECT NUMBER
442-303
Building Number
BUFFALO
Drawing Number
TD111
Dwg 4 of 29