



A-Squared  
Architecture

1201 BROADWAY, STUDIO 304  
NEW YORK, NY 10001

ISSUED	
ISSUED FOR DD REVIEW	10.11.22
ISSUED FOR REVIEW	10.19.22
ISSUED FOR PAGE-TURN	10.28.22
ISSUED FOR FILING	11.11.22
ISSUED PER DOB COMMENTS	5.02.23
RE-ISSUED PER DOB COMMENTS	5.26.23

THE CITY OF YONKERS  
20 SOUTH BROADWAY  
YONKERS, NY 10701



3RD FL FTE PLAN

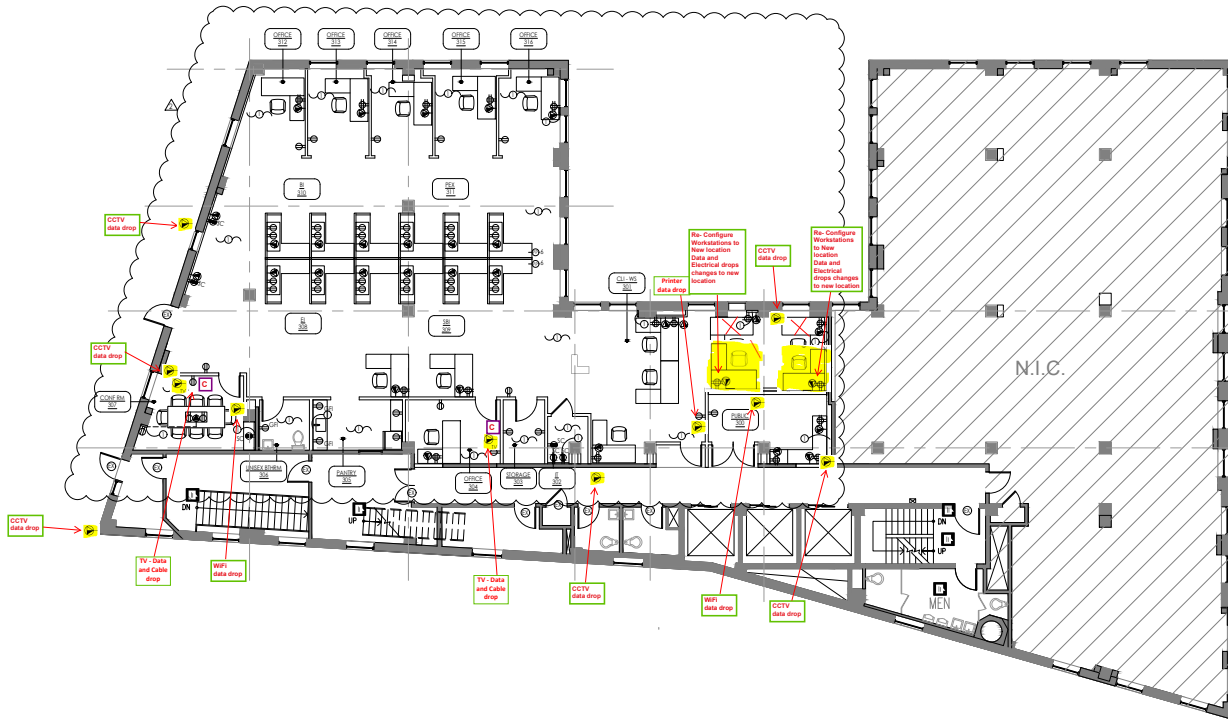
22118

DRAWN BY: RR  
CHECKED BY: AT

A-408.00

OF x

FURNITURE, TELEPHONE AND ELECTRICAL LEGEND	
	NEW WALL-MOUNTED DUPLEX ELECTRICAL OUTLET
	NEW WALL-MOUNTED QUADPLEX ELECTRICAL OUTLET
	NEW WALL-MOUNTED TELE/DATA J-BOX, WITH DRAG LINE ONLY
	NEW WALL-MOUNTED TELE/DATA J-BOX WITH DRAG LINE ONLY FOR TV
	NEW WALL-MOUNTED DUPLEX OUTLET WITH GROUND FAULT INTERRUPTER
	NEW WALL-MOUNTED SEPARATE CIRCUIT DUPLEX ELECTRICAL OUTLET
	NEW WALL-MOUNTED DEDICATED CIRCUIT DUPLEX ELECTRICAL OUTLET
	NEW POWER WHIP TO FEED WORKSTATIONS / FURNITURE SYSTEM. "N" - INDICATED NUMBER OF WORKSTATIONS SERVED. COORDINATE WITH TENANT FURNITURE SPECS FOR POWER REQUIREMENTS. GC IS TO PROVIDE DRAG LINE ONLY FOR ALL TELE/DATA. EXACT LOCATION TO BE COORDINATED IN FIELD WITH TENANT & TENANT FURNITURE VENDOR.
	NEW POWER POLE TO FEED WORKSTATIONS / FURNITURE SYSTEM. "N" - INDICATED NUMBER OF WORKSTATIONS SERVED. COORDINATE WITH TENANT FURNITURE SPECS FOR POWER REQUIREMENTS. GC IS TO PROVIDE DRAG LINES ONLY FOR ALL TELE/DATA. EXACT LOCATION TO BE COORDINATED IN FIELD WITH TENANT & TENANT FURNITURE VENDOR.
	NEW TENANT FURNITURE POWER WITH (1) QUAD ELECTRICAL OUTLET AND DATA, EXACT REQUIREMENTS TO BE COORDINATED WITH TENANT FURNITURE SPECS AND VENDOR. GC IS TO PROVIDE PULL STRING FOR ALL TELE/DATA.
	NEW TENANT WORKSTATION POWER WITH (2) DUPLEX ELECTRICAL OUTLETS & DATA, EXACT REQUIREMENTS TO BE COORDINATED WITH TENANT FURNITURE SPECS AND VENDOR. GC IS TO PROVIDE DRAG LINE FOR ALL TELE/DATA. GC IS TO RUN POWER & DRAG LINES FOR DATA VIA NEW SUM RACKWAY BY LEGEND, OR EQUAL TO AVOID TRIPPING HAZARD. COORDINATE RUN IN FIELD WITH TENANT & TENANT FURNITURE VENDOR.
NOTES	
GENERAL NOTES: <ul style="list-style-type: none"><li>ALL OUTLETS TO BE Laid OUT IN FIELD FOR APPROVAL BY TENANT PRIOR TO INSTALLATION</li><li>ALL FURNITURE IS TO BE FURNISHED AND INSTALLED BY TENANT. GC IS TO MAKE ELECTRICAL CONNECTION TO WORKSTATIONS</li><li>COORDINATE ALL FURNITURE POWER REQUIREMENTS WITH TENANT SPECS</li><li>ALL BASE BUILDING WALLS WITH POWER AND/OR DATA ARE TO BE FURRED OUT AS REQUIRED TO CONCEAL ALL CONDUITS. THERE ARE TO BE NO EXPOSED CONDUITS</li></ul>	
	GC IS TO FURR OUT WALL AS REQUIRED TO TELECOM ELECTRICAL OUTLETS, AND FIRE DEVICES ARE FURR AND CONDUITS HIDDEN ESPECIALLY ON BASE BUILDING WALLS
	GC IS TO COORDINATE WITH TENANT & TENANT FURNITURE VENDOR TO CONFIRM FURNITURE IS POWERED AND EXACT POWER REQUIREMENTS IF NOT POWERED. GC IS TO RUN POWER IN NEW SUM RACKWAY BY LEGEND, OR EQUAL TO AVOID TRIPPING HAZARD. GC IS TO RUN POWER IN NEW SUM RACKWAY BY LEGEND, OR EQUAL TO AVOID TRIPPING HAZARD. GC IS TO PROVIDE DRAG LINES ONLY FOR ALL TELE/DATA.



1 3RD FL FTE PLAN  
Scale: 1/8" = 1'-0"