

AREA ANALYSIS

First Level		
Sales	80%	25,012.3 SF
Supports	20%	6,362.7 SF
GROUND COVER		32,062 SF

STORE INFORMATION

REAL ESTATE APPROVAL: _____

STORE VOLUME: 12.4 M

FIELD COMMENTS: _____

CEILING HEIGHT: 12'-0" A.F.F.

INFIELD SOFFIT: 12'-0" A.F.F.

FRONTLINE SOFFIT: 12'-0" A.F.F.

NO.	DESCRIPTION	DATE
1	ADDED A NEW D.L.P.M. OFFICE ADDED DETAILS 9, 10, 11-RC2	3/20/2023

Marshall's

770 Cochituate Road | Framingham, MA 01701

LONGMONT, CO

FIXTURE PLAN

Deal Type: REMODEL

Store Number: 0323

Project Start Date: 01/03/2023

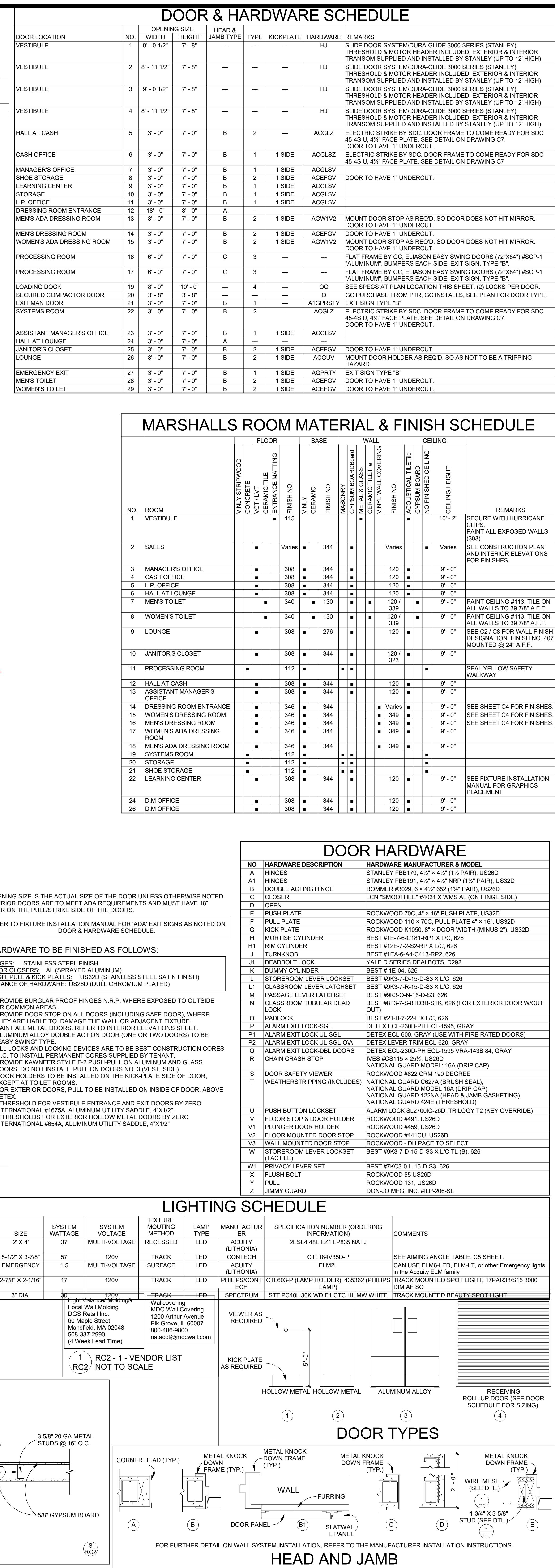
Planned By: PGP

Criteria Set By: PGP

Checked By: JR/DM

RC1

Scale: 1/8" = 1'-0"



DOOR & HARDWARE SCHEDULE									
DOOR LOCATION	NO	OPENING SIZE		HEAD & JAMB TYPE	TYPE	KICKPLATE	HARDWARE	REMARKS	
		WIDTH	HEIGHT						
VESTIBULE	1	9'-0" 11-1/2"	7'-6"	---	---	---	HJ	SLIDE DOOR SYSTEM/DURA-GLIDE 3000 SERIES (STANLEY) THRESHOLD & MOTOR HEADER INCLUDED. EXTERIOR & INTERIOR TRANSPOM SUPPLIED AND INSTALLED BY STANLEY (UP TO 12 HIGH)	
VESTIBULE	2	8'-11-1/2"	7'-6"	---	---	---	HJ	SLIDE DOOR SYSTEM/DURA-GLIDE 3000 SERIES (STANLEY) THRESHOLD & MOTOR HEADER INCLUDED. EXTERIOR & INTERIOR TRANSPOM SUPPLIED AND INSTALLED BY STANLEY (UP TO 12 HIGH)	
VESTIBULE	3	9'-0" 11-1/2"	7'-6"	---	---	---	HJ	SLIDE DOOR SYSTEM/DURA-GLIDE 3000 SERIES (STANLEY) THRESHOLD & MOTOR HEADER INCLUDED. EXTERIOR & INTERIOR TRANSPOM SUPPLIED AND INSTALLED BY STANLEY (UP TO 12 HIGH)	
VESTIBULE	4	8'-11-1/2"	7'-6"	---	---	---	HJ	SLIDE DOOR SYSTEM/DURA-GLIDE 3000 SERIES (STANLEY) THRESHOLD & MOTOR HEADER INCLUDED. EXTERIOR & INTERIOR TRANSPOM SUPPLIED AND INSTALLED BY STANLEY (UP TO 12 HIGH)	
HALL AT CASH	5	3'-0"	7'-0"	B	2	---	ACGLZ	ELECTRIC STRIKE BY SDC. DOOR FRAME TO COME READY FOR SDC 45-45 U, 4-1/2" FACE PLATE. SEE DETAIL ON DRAWING C7. DOOR TO HAVE "1" UNDERCUT.	
CASH OFFICE	6	3'-0"	7'-0"	B	1	1 SIDE	ACGLSZ	ELECTRIC STRIKE BY SDC. DOOR FRAME TO COME READY FOR SDC 45-45 U, 4-1/2" FACE PLATE. SEE DETAIL ON DRAWING C7.	
MANAGERS OFFICE	7	3'-0"	7'-0"	B	1	1 SIDE	ACGLSV		
STOPS STORAGE	8	3'-0"	7'-0"	B	2	1 SIDE	ACEGVF		
LEARNING CENTER	9	3'-0"	7'-0"	B	1	1 SIDE	ACGLSV		
STORAGE	10	3'-0"	7'-0"	B	1	1 SIDE	ACGLSV		
L.P. OFFICE	11	3'-0"	7'-0"	B	1	1 SIDE	ACGLSV		
DRESSING ROOM ENTRANCE	12	18'-0"	7'-0"	A	---	---	---		
MENS ADA DRESSING ROOM	13	3'-0"	7'-0"	B	2	1 SIDE	ACGW1V2	MOUNT DOOR STOP AS REQ'D. SO DOOR DOES NOT HIT MIRROR DOOR TO HAVE "1" UNDERCUT.	
MENS DRESSING ROOM	14	3'-0"	7'-0"	B	2	1 SIDE	ACGW1V2		
WOMENS ADA DRESSING ROOM	15	3'-0"	7'-0"	B	2	1 SIDE	ACGW1V2	MOUNT DOOR STOP AS REQ'D. SO DOOR DOES NOT HIT MIRROR DOOR TO HAVE "1" UNDERCUT.	
PROCESSING ROOM	16	6'-0"	7'-0"	C	3	---	---	FLAT FRAME BY GC. ELIASON EASY SWING DOORS (727347) #JSCP-1 "ALUMINUM. BUMPS EACH SIDE. EXT. SIGN. TYPE "B".	
PROCESSING ROOM	17	6'-0"	7'-0"	C	3	---	---	FLAT FRAME BY GC. ELIASON EASY SWING DOORS (727347) #JSCP-1 "ALUMINUM. BUMPS EACH SIDE. EXT. SIGN. TYPE "B".	
LOADING DOOR	19	8'-0"	10'-0"	---	4	---	OO	SEE SPECS AT PLAN LOCATION THIS SHEET. (2) LOCKS PER DOOR.	
SECURED COMPACTOR DOOR	20	3'-8"	3'-8"	---	---	---	OO	GC PURCHASE FROM PTR. GC INSTALLS. SEE PLAN FOR DOOR TYPE.	
EXIT MAIN DOOR	21	3'-0"	7'-0"	B	1	---	ATGRS1V		
SYSTEMS ROOM	22	3'-0"	7'-0"	B	2	---	ACGLZ	ELECTRIC STRIKE BY SDC. DOOR FRAME TO COME READY FOR SDC 45-45 U, 4-1/2" FACE PLATE. SEE DETAIL ON DRAWING C7. DOOR TO HAVE "1" UNDERCUT.	
ASSISTANT MANAGER'S OFFICE	23	3'-0"	7'-0"	B	1	1 SIDE	ACGLSV		
HALL AT LOUNGE	24	3'-0"	7'-0"	A	---	---	---	DOOR TO HAVE "1" UNDERCUT.	
JANITORS CLOSET	25	3'-0"	7'-0"	B	2	1 SIDE	ACEGVF		
EMERGENCY EXIT	26	3'-0"	7'-0"	B	1	---	ACGVW	MOUNT DOOR HOLDER AS REQ'D. SO AS NOT TO BE A TRIPPING HAZARD.	
LOUNGE	27	3'-0"	7'-0"	B	1	1 SIDE	AGPRTY	EXT. SIGN. TYPE "B"	
MENS TOILET	28	3'-0"	7'-0"	B	2	1 SIDE	ACEGVF	DOOR TO HAVE "1" UNDERCUT.	
WOMENS TOILET	29	3'-0"	7'-0"	B	2	1 SIDE	ACEGVF	DOOR TO HAVE "1" UNDERCUT.	

MARSHALLS ROOM MATERIAL & FINISH SCHEDULE										
NO.	ROOM	FLOOR		BASE		WALL		CEILING		REMARKS
		VINYL STRIPWOOD CONCRETE VCT LVT TILE	ENTRANCE MATING	VINYL CEMATIC	FINISH NO.	MASONRY CERAMIC CERAMIC BOARD CERAMIC TILE	VINYL WALL COVERING	FINISH NO.	INDUSTRIAL TILE CERAMIC BOARD NO FINISHED CEILING	
1	VESTIBULE	■	115	■		■		■	10' - 2"	SECURE WITH HURRICANE CLIPS PAINT ALL EXPOSED WALLS (#003)
2	SALES	■	Varies	■	344	■		Varies	■	SEE CONSTRUCTION PLAN AND INTERIOR ELEVATIONS FOR FINISHES.
3	MANAGER'S OFFICE	■	308	■	344	■	120	■	9' - 0"	
4	CASH OFFICE	■	308	■	344	■	120	■	9' - 0"	
5	L.P. OFFICE	■	308	■	344	■	120	■	9' - 0"	
6	HALL AT LOUNGE	■	308	■	344	■	120	■	9' - 0"	
7	MEN'S TOILET	■	340	■	130	■	120	■	9' - 0"	PAIN CEILING #113. TILE ON ALL WALLS TO 39 7/8" A.F.F.
8	WOMEN'S TOILET	■	340	■	130	■	120 / 339	■	9' - 0"	PAINT CEILING #113. TILE ON ALL WALLS TO 39 7/8" A.F.F.
9	LOUNGE	■	308	■	276	■	120	■	9' - 0"	SEE C2 / C8 FOR WALL FINISH DESIGNATION. FINISH NO. 407 MOUNTED @ 24" A.F.F.
10	JANITOR'S CLOSET	■	308	■	344	■	120 / 323	■	9' - 0"	
11	PROCESSING ROOM	■	112	■		■		■		SEAL YELLOW SAFETY WALKWAY
12	HALL AT CASH	■	308	■	344	■	120	■	9' - 0"	
13	ASSISTANT MANAGERS' OFFICE	■	308	■	344	■	120	■	9' - 0"	
14	DRESSING ROOM ENTRANCE	■	346	■	344	■	Varies	■	9' - 0"	SEE SHEET C4 FOR FINISHES.
15	WOMEN'S DRESSING ROOM	■	346	■	344	■	349	■	9' - 0"	SEE SHEET C4 FOR FINISHES.
16	MEN'S DRESSING ROOM	■	346	■	344	■	349	■	9' - 0"	SEE SHEET C4 FOR FINISHES.
17	WOMEN'S ADA DRESSING ROOM	■	346	■	344	■	349	■	9' - 0"	
18	MEN'S ADA DRESSING ROOM	■	346	■	344	■	349	■	9' - 0"	
19	SYSTEMS ROOM	■	112	■		■		■		
20	STORAGE	■	112	■		■		■		
21	SHOE STORAGE	■	112	■		■		■		
22	LEARNING CENTER	■	308	■	344	■	120	■	9' - 0"	SEE FIXTURE INSTALLATION MANUAL FOR GRAPHICS PLACEMENT
24	D.M. OFFICE	■	308	■	344	■	120	■	9' - 0"	
26	D.M. OFFICE	■	308	■	344	■	120	■	9' - 0"	

DOOR HARDWARE		
NO	HARDWARE DESCRIPTION	HARDWARE MANUFACTURER & MODEL
A	HINGES	STANLEY FB817B, 1/2" x 4 1/2" (1/4" PAIR), US28D
A1	HINGES	STANLEY FB817B, 1/2" x 4 1/2" NRP (1/4" PAIR), US32D
B	DOUBLE ACTING HINGE	BOMMER 30209, 6" x 4" x 1/2" (1/4" PAIR), US28D
C	CLOSER	LCN "SMOOTHEE" 44031 X HMS AL (ON HINGE SIDE)
D	OPEN	
E	PUSH PLATE	ROCKWOOD 70C, 4" x 16" PUSH PLATE, US33D
F	PULL PLATE	ROCKWOOD 116, 7" x 16" PULL PLATE, 4" x 16", US32D
G	ROCK PLATE	ROCKWOOD K1050, 6" x 16" ROCK WITH MGN37, 21" US32D
H	MORTISE CYLINDER	HEIT-74-K-181-RP1 X-LC, 626
H1	RMK CYLINDER	BEST 4125-2-52-82-P X-LC, 626
I	TURNBOW	BEST HEI-64-M-241-81-RP, 626
J	DEADBOLT LOCK	YALE D SERIES DEADBOLTS, D292
K	DUMMAY CYLINDER	BEST J-15-44, 626
L	STOREROOM LEVER LOCKSET	BEST 8R3C3-7-15-D-53-S3, 626
L1	CLASSROOM LEVER LATCHSET	BEST 8R3K-7-15-D-53-S3, 626
M	PASSAGE LEVER LATCHSET	BEST 8R3K-7-15-D-53-S3, 626
N	CLASSROOM TUBULAR DEAD LOCK	BEST 8R3K-7-15-D-53-S3, 626 (FOR EXTERIOR DOOR W/OUT LOCK)
O	PADLOCK	BEST B1-B1-7-25-L X-LC, 626
P	ALARM EXIT LOCK-DE, 0VA	DETEXE LCK-230D (PR. 1595, GRAY
P1	ALARM EXIT LOCK-UL-SL	DETEXE EQL-60, GRAY (USE WITH FIRE RATED DOORS)
P2	ALARM EXIT LOCK-UL-SL-0VA	DETEXE LEX-60, TRIM EXL-620, GRAY
Q	ALARM EXIT LOCK-DE, DOORS	DETEXE LCK-230D (PR. 1595, GRAY 1436, 84, GRAY)
R	CHAIN CRASH STOP	IVES RC315-15, 25" x 1562D
S	DOOR SAFETY VIEWER	NATIONAL GUARD MODEL 68-1 (DRIP CAP)
T	WEATHERSTRIPPING (INCLUDES)	NATIONAL GUARD 262Z CRM, GREEN
U	PUSH BUTTON LOCKSET	NATIONAL GUARD C678A (BRUSH SILEN)
V	FLOOR STOP & DOOR HOLDER	ALARM LOCK 1222A (HOLD & JAMB GASKETING), NATIONAL GUARD 424E (THRESHOLD)
V1	PLUNGER DOOR HOLDER	ALARM LOCK 1222A (HOLD & JAMB GASKETING), NATIONAL GUARD 424E (THRESHOLD)
V2	FLOOR MOUNTED DOOR STOP	ROCKWOOD #491, US28D
V3	WALL MOUNTED DOOR STOP	ROCKWOOD #459, US28D
W	STOREROOM LEVER LOCKSET (TACTILE)	ROCKWOOD #441SL, US28D
W1	PLUNGER LEVER SET	ROCKWOOD - DH PACE TO SELECT
X	FLUSH BOLT	BEST 8R3K-7-15-D-53-S3 L.C. (L, B), 626
X1	PULL	ROCKWOOD 151, US28D
Z	JIMMY GUARD	ROCKWOOD 151, US28D
		DON-JO MFG, INC. M31-206-SL

LIGHTING SCHEDULE									
SIZE	SYSTEM VATTAGE	SYSTEM VOLTAGE	FIXTURE MOUNTING METHOD	LAMP TYPE	MANUFACTURER	SPECIFICATION NUMBER (ORDERING INFORMATION)	COMMENTS		
2 X 4"	37	MULTI-VOLTAGE	RECESSED	LED	ACUITY (LITHONIA)	2SLA48, E1 (LPS/NATJ)	SEE AIMING ANGLE TABLE CS SHEET.		
5-1/2" X 3-7/8"	57	120V	TRACK	LED	CONTECH ACUITY (LITHONIA)	CTL184V3SD-P	CAN USE ELM LED, ELMJ, or other Emergency lights in the Acuity ELM family		
EMERGENCY	1.5	MULTI-VOLTAGE	TRACK SURFACE	LED	PHILIPS CONTOUR	CTL603-P (LAMP HOLDER): 435362 (PHILIPS LAMP)	TRACK MOUNTED SPOT LIGHT, 17PAR36S/IS 3000 DM 48 S0		
2-7/8" X 2-1/16"	17	120V	TRACK	LED	PHILIPS CONTOUR	CTL603-P (LAMP HOLDER): 435362 (PHILIPS LAMP)	TRACK MOUNTED BEAUTY SPOT LIGHT		
3" DIA.	80	120V	TRACK	LED	SPECTRUM	STT POLK 30K WD E1 CTC HL MB WHITE	TRACK MOUNTED BEAUTY SPOT LIGHT		

3 5/8" 20 GA METAL STUDS @ 16" O.C.

5/8" GYPSUM BOARD

CORNER BEAD (TYP.)

METAL KNOCK DOWN FRAME (TYP.)

METAL KNOCK DOWN FRAME (TYP.)

METAL KNOCK DOWN FRAME (TYP.)

WALL

FURRING

DOOR PANEL

B1

SLATWALL PANEL

2'-0"

2'-0"

WIRE MESH (SEE DTL.)

3/4" X 3/8" STUD (SEE DTL.)

1

2

3

4

5

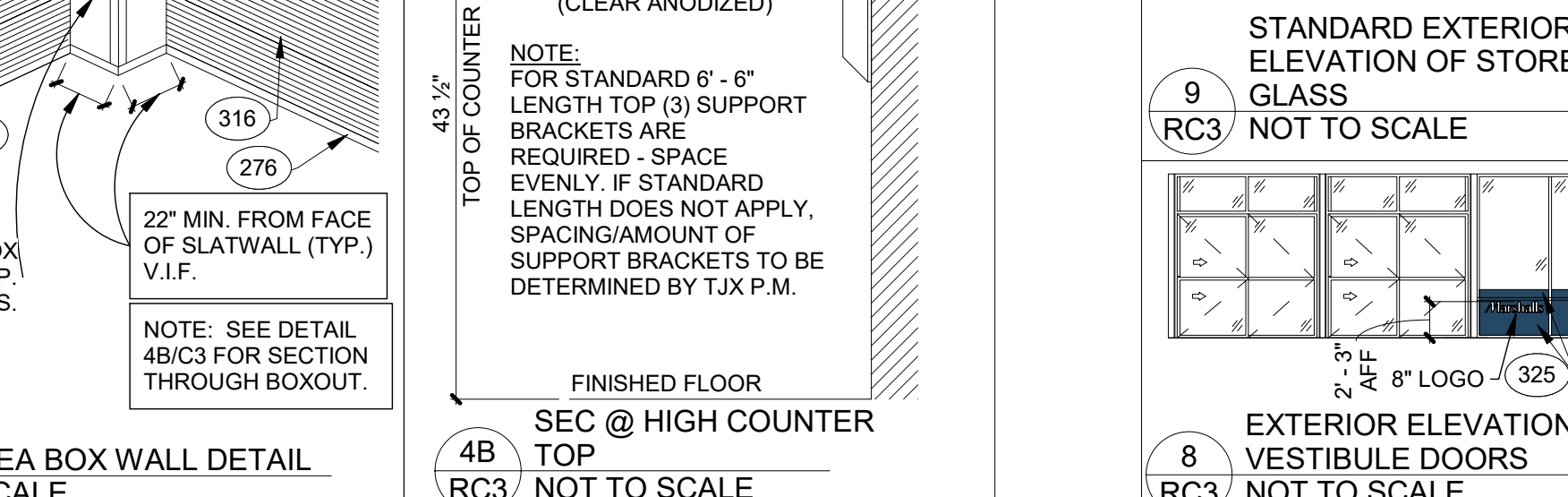
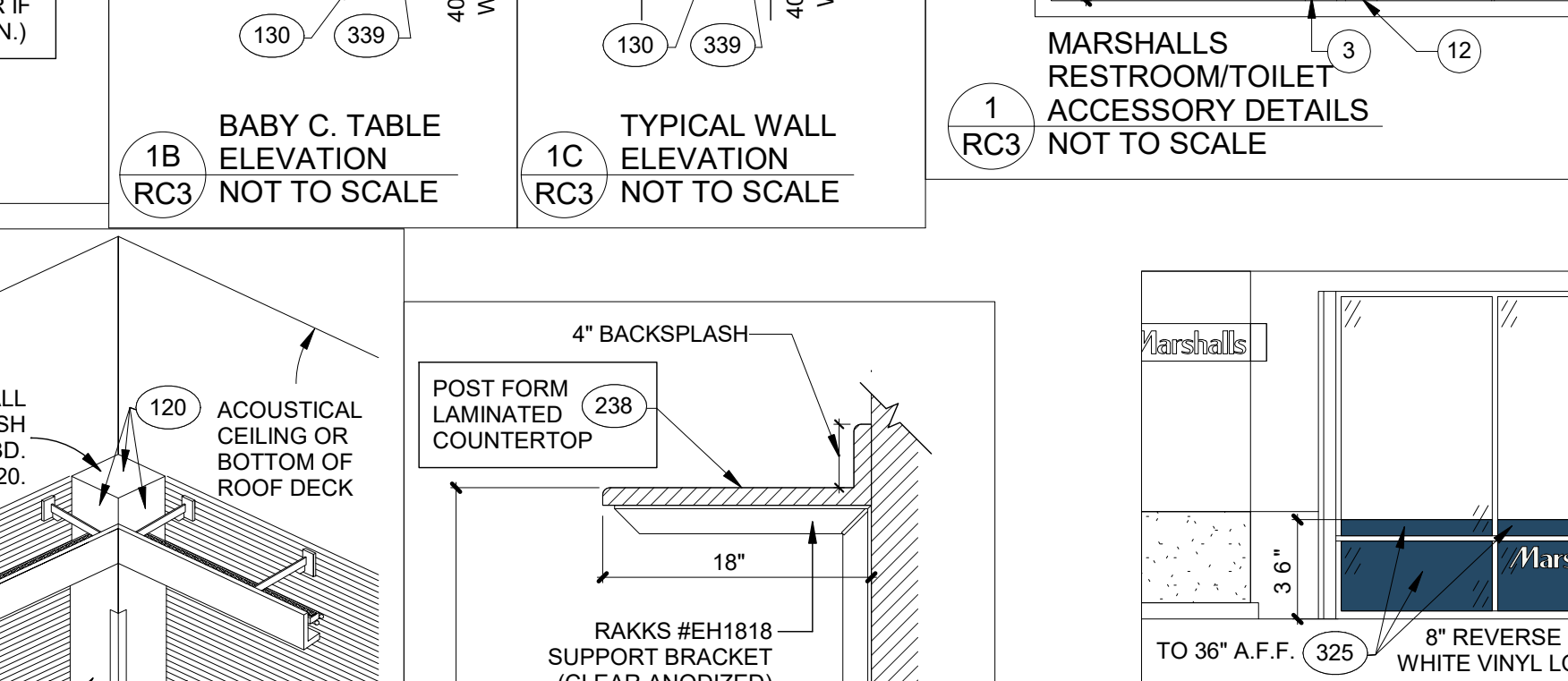
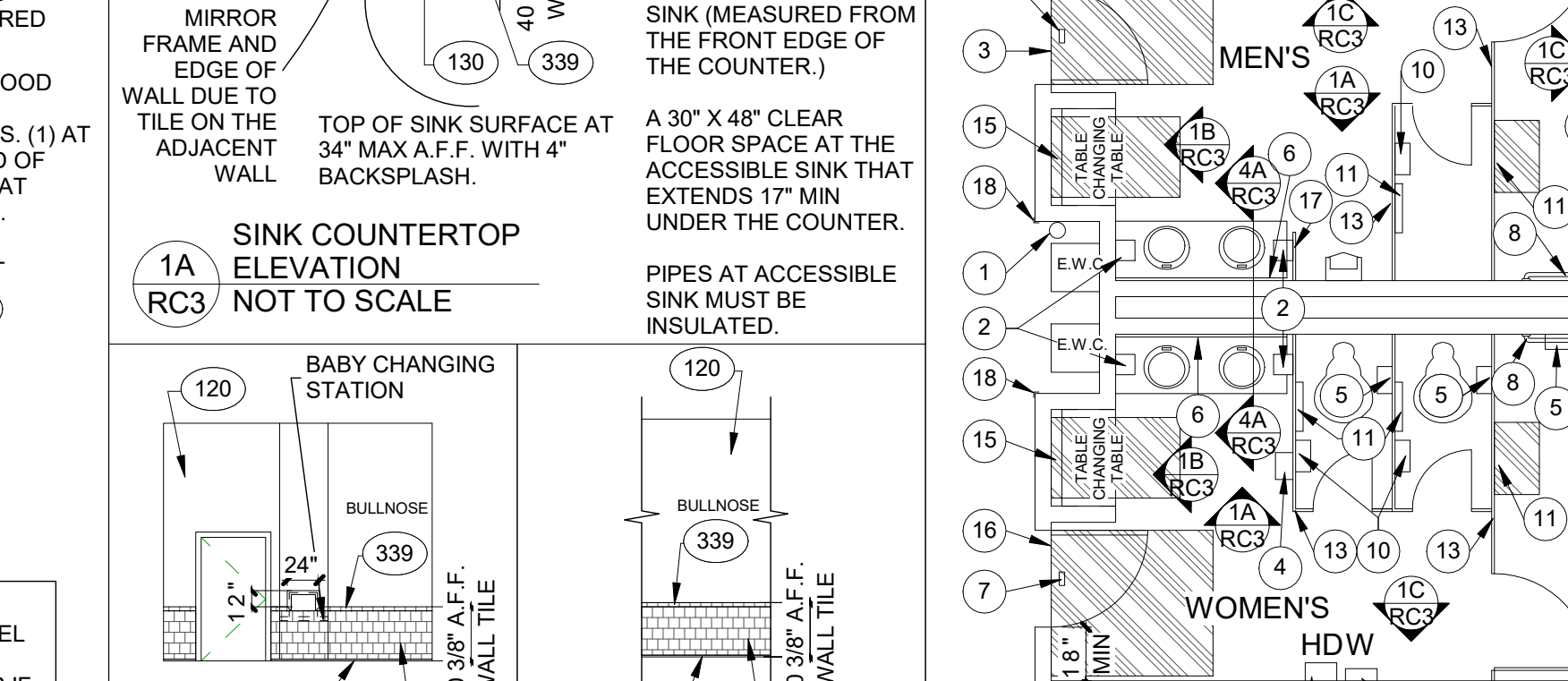
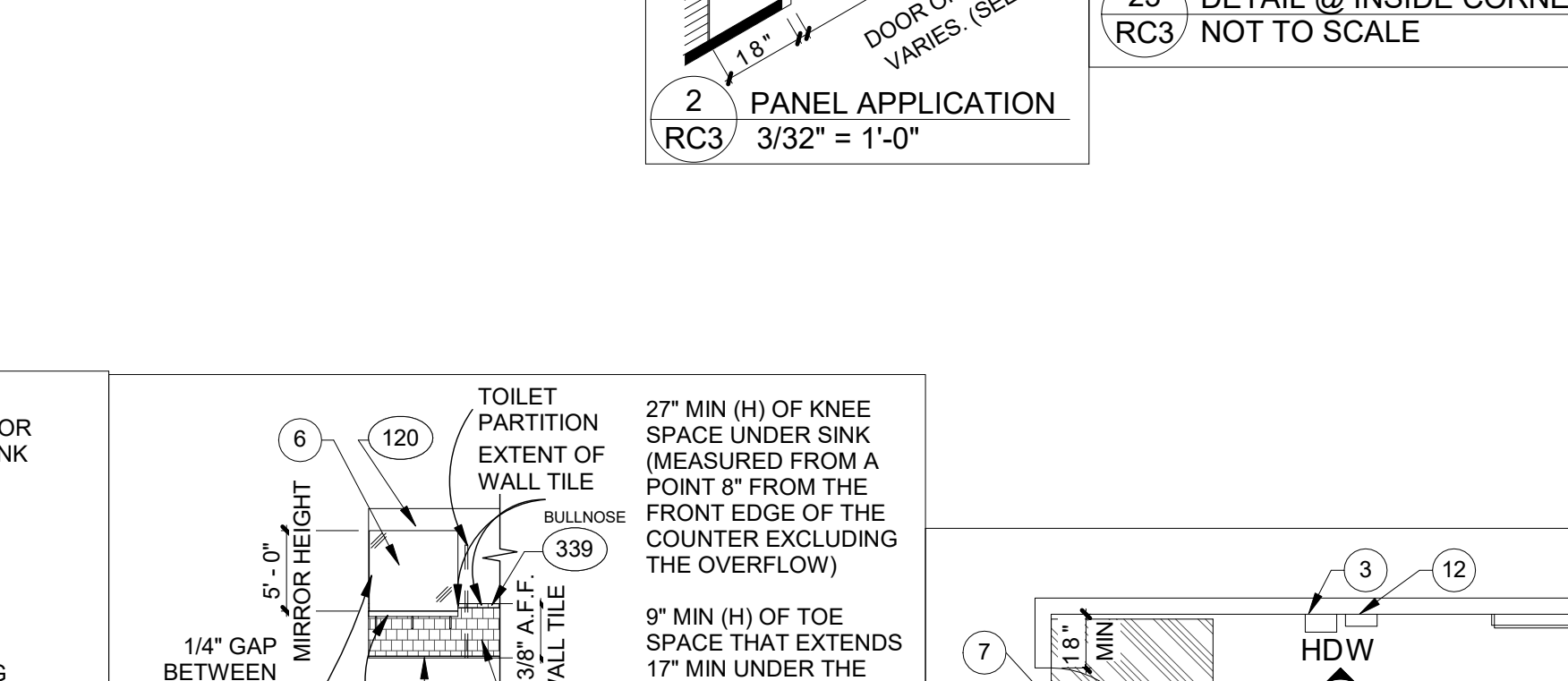
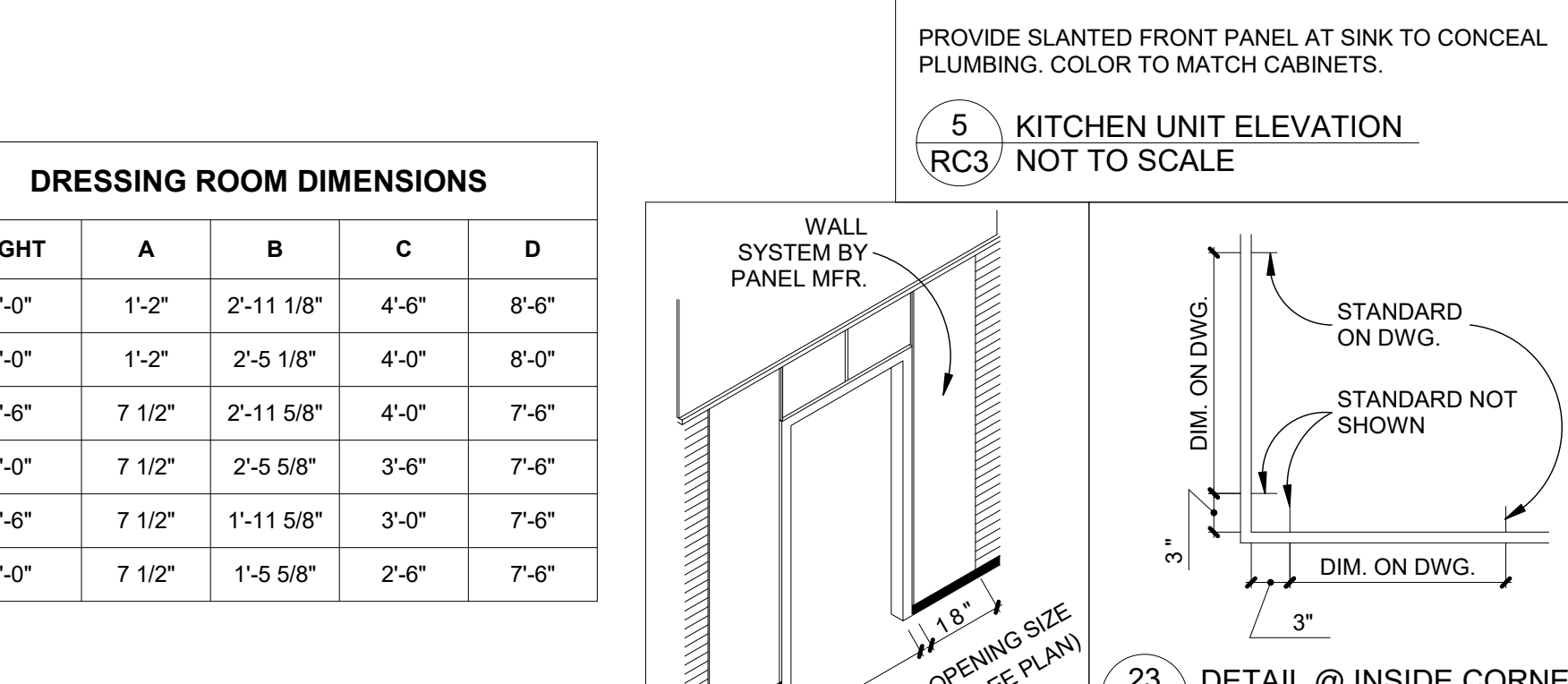
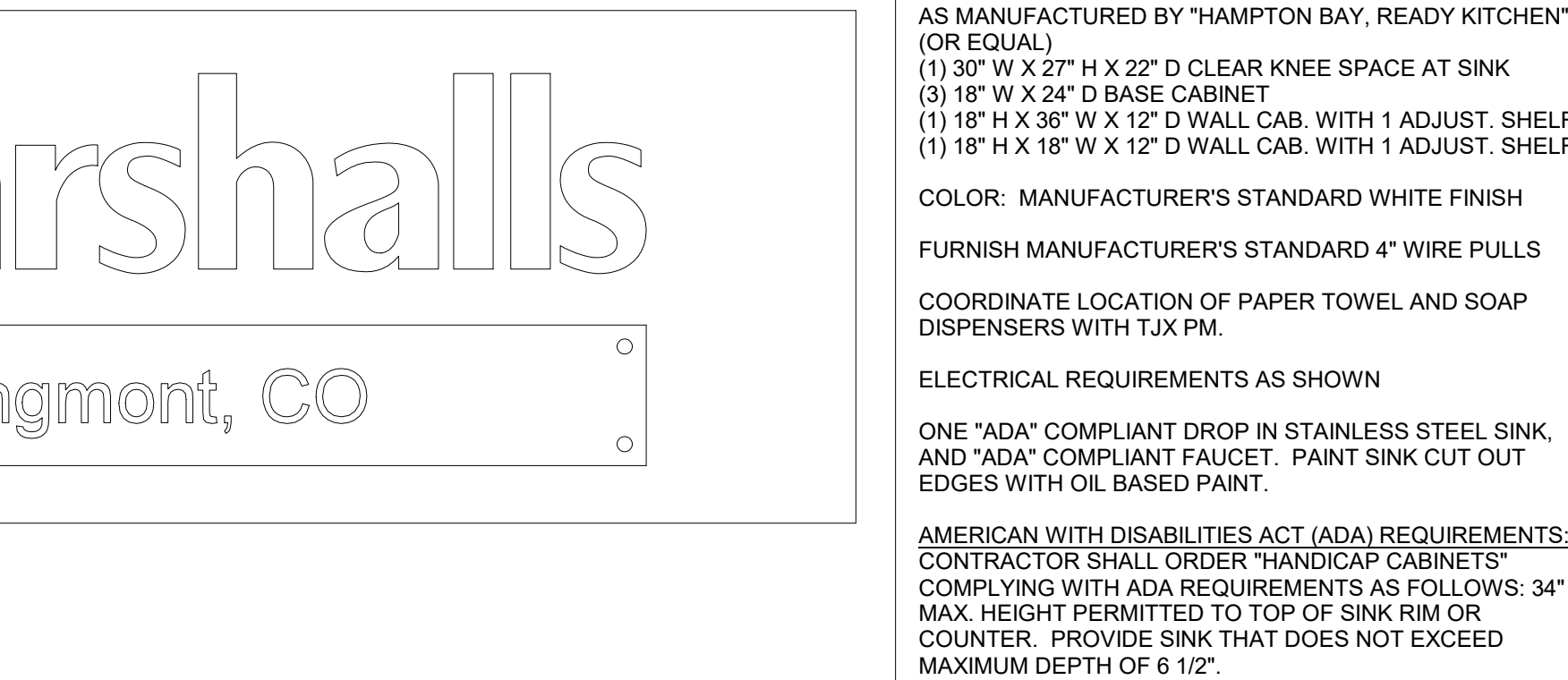
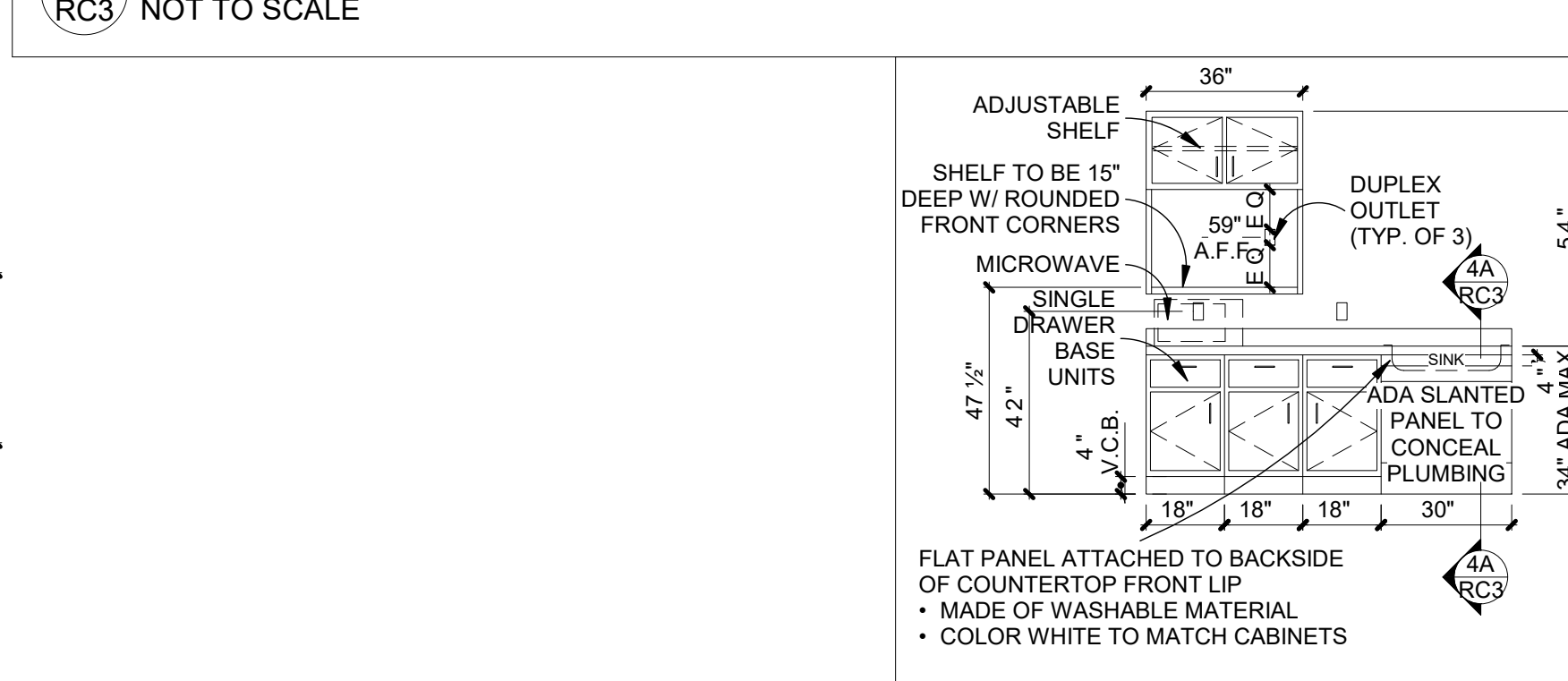
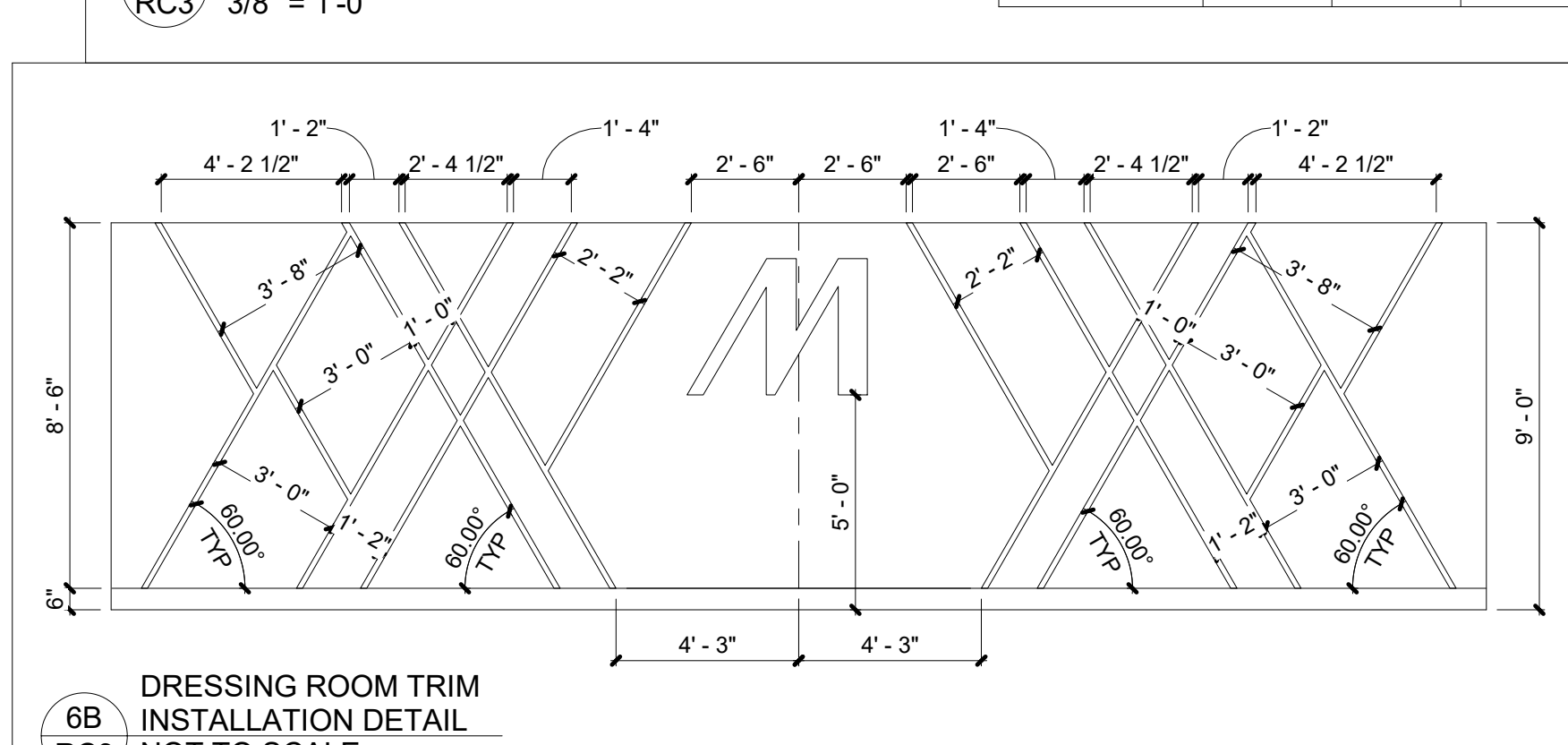
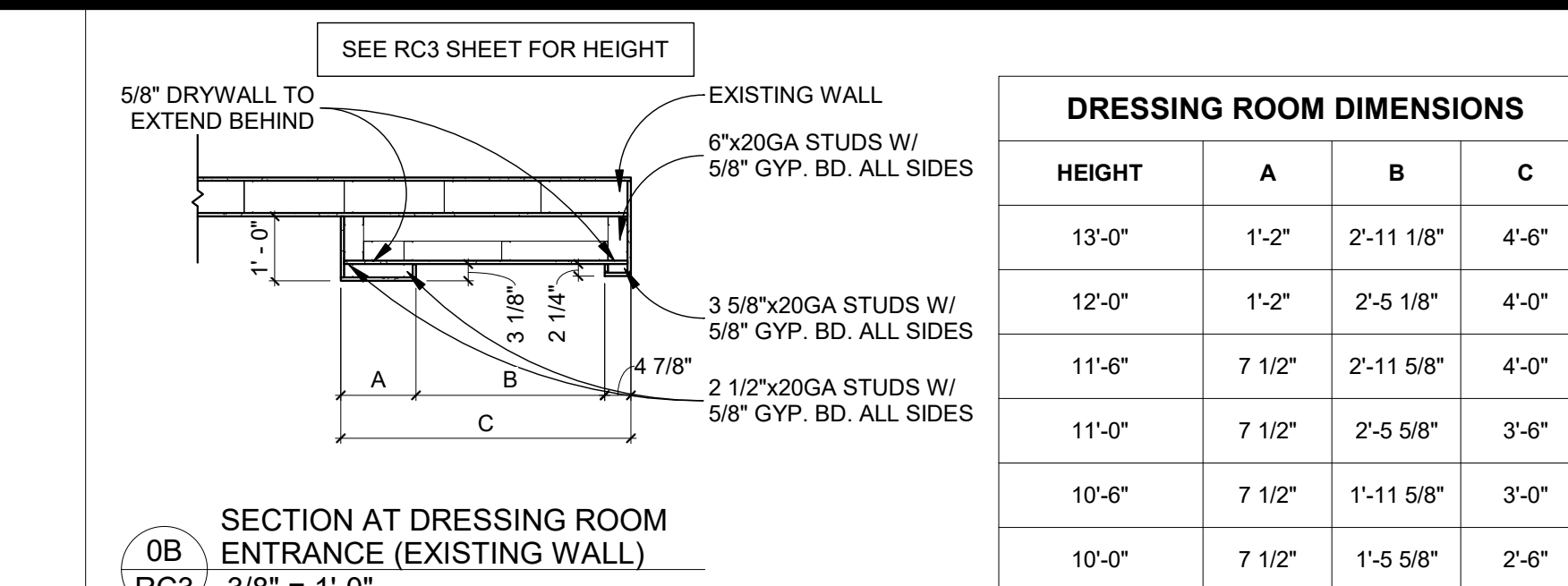
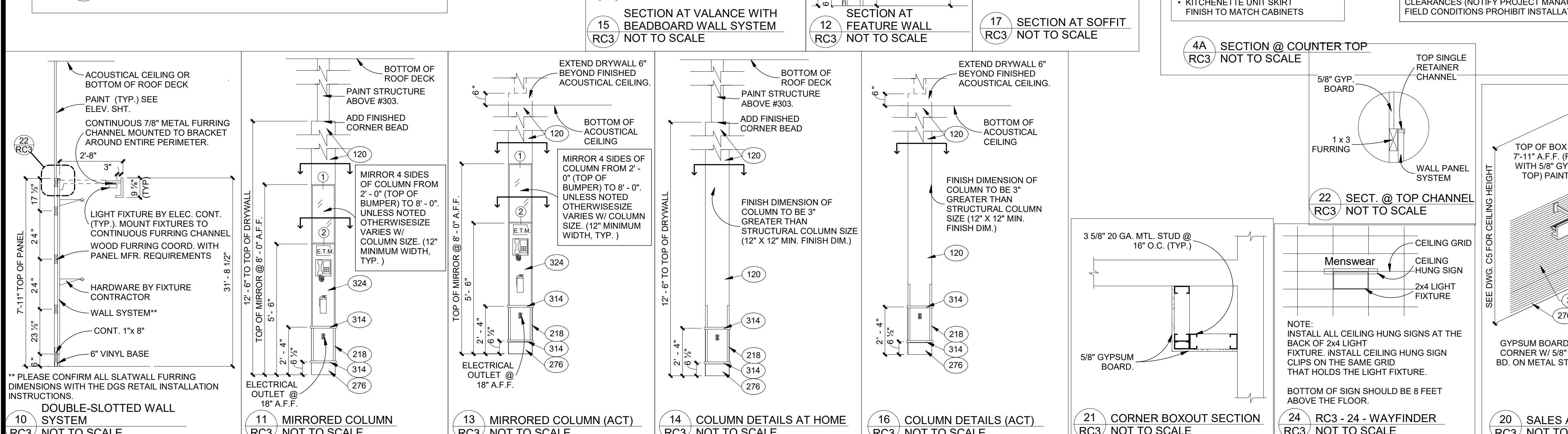
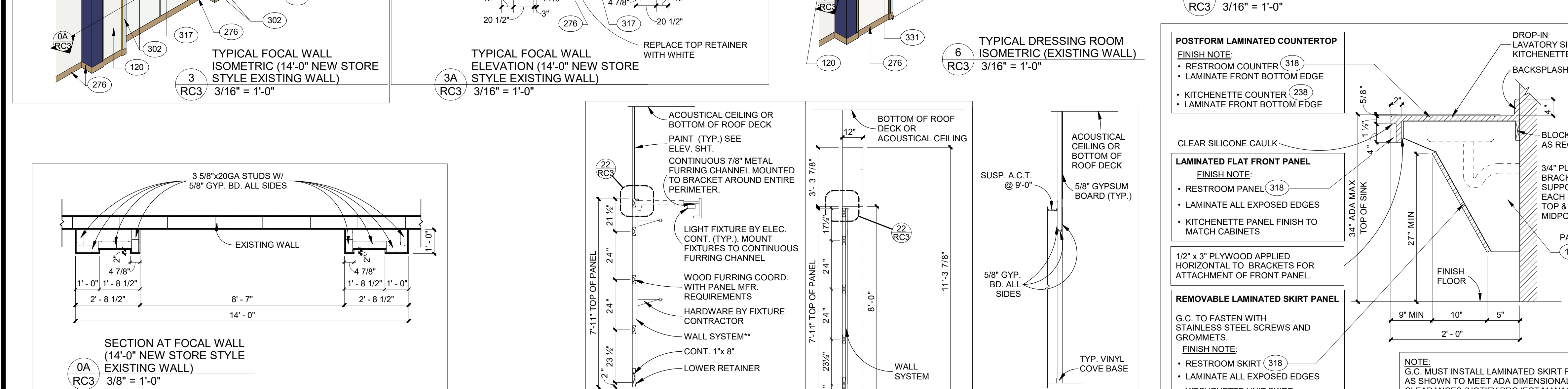
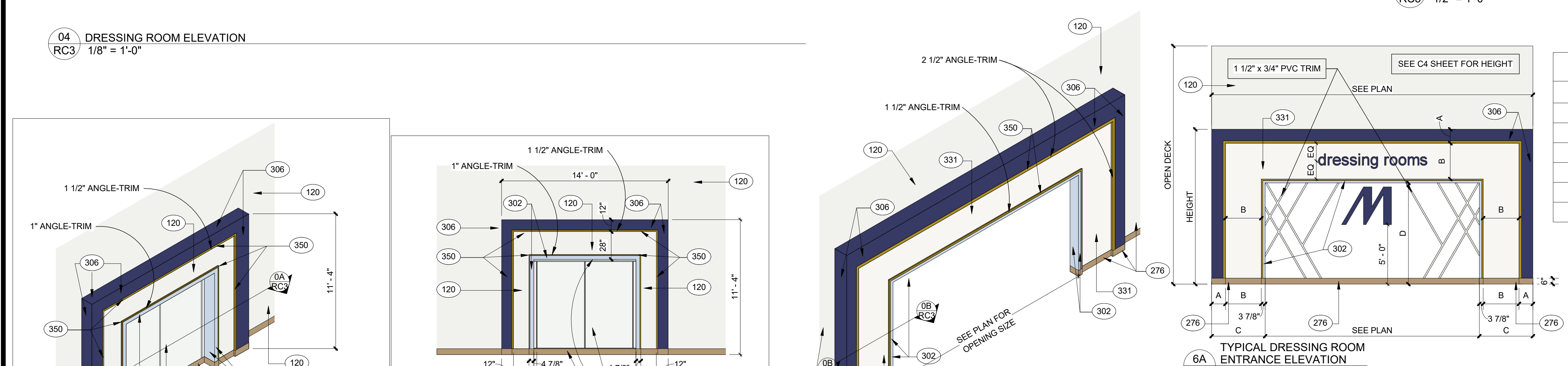
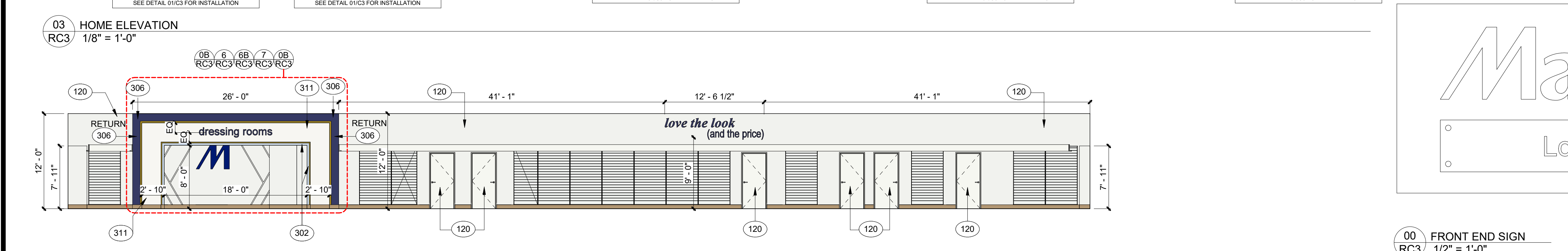
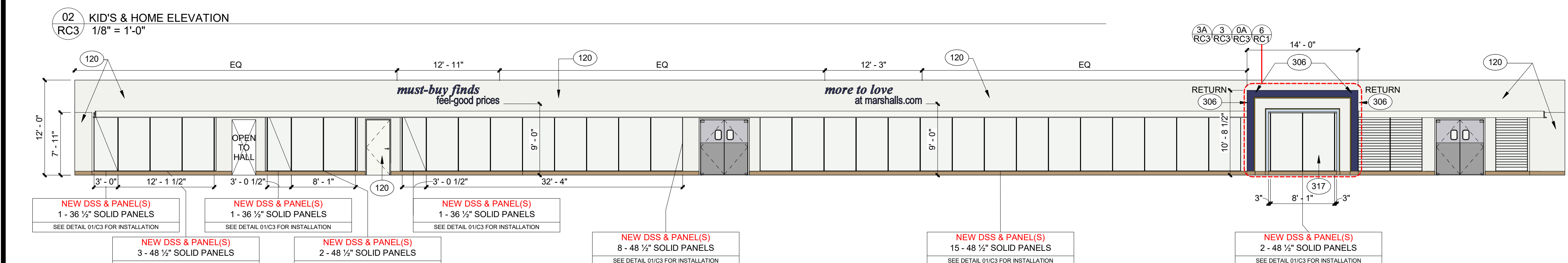
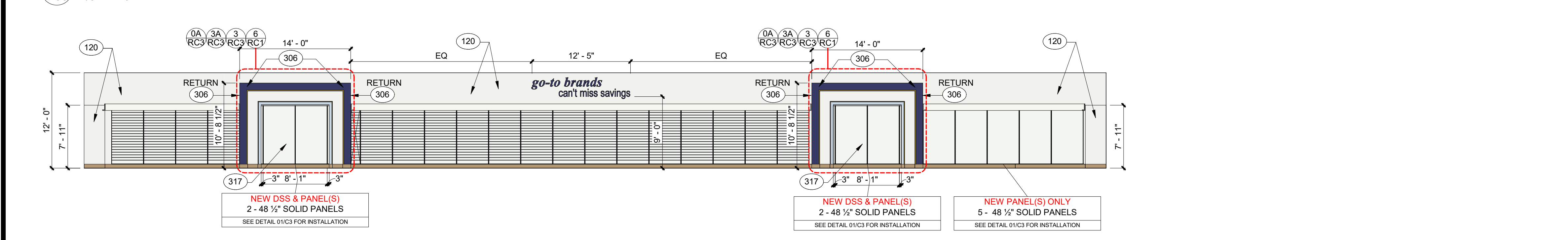
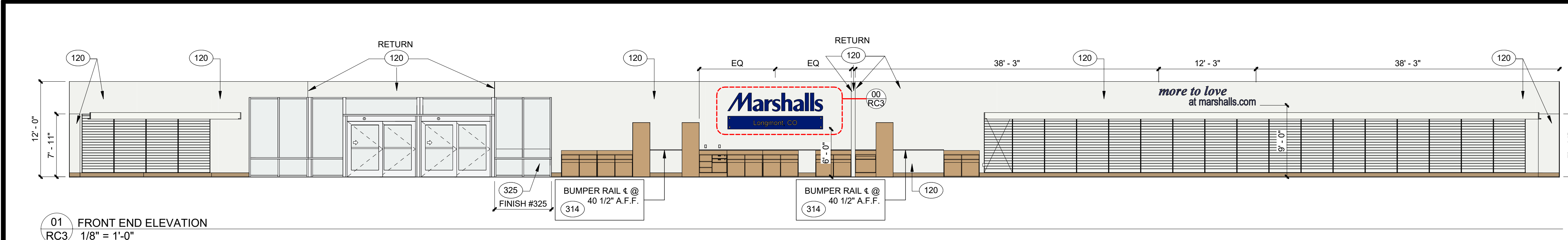
DOOR TYPES

FOR FURTHER DETAIL ON WALL SYSTEM INSTALLATION, REFER TO THE MANUFACTURER INSTALLATION INSTRUCTIONS.

HEAD AND JAMB

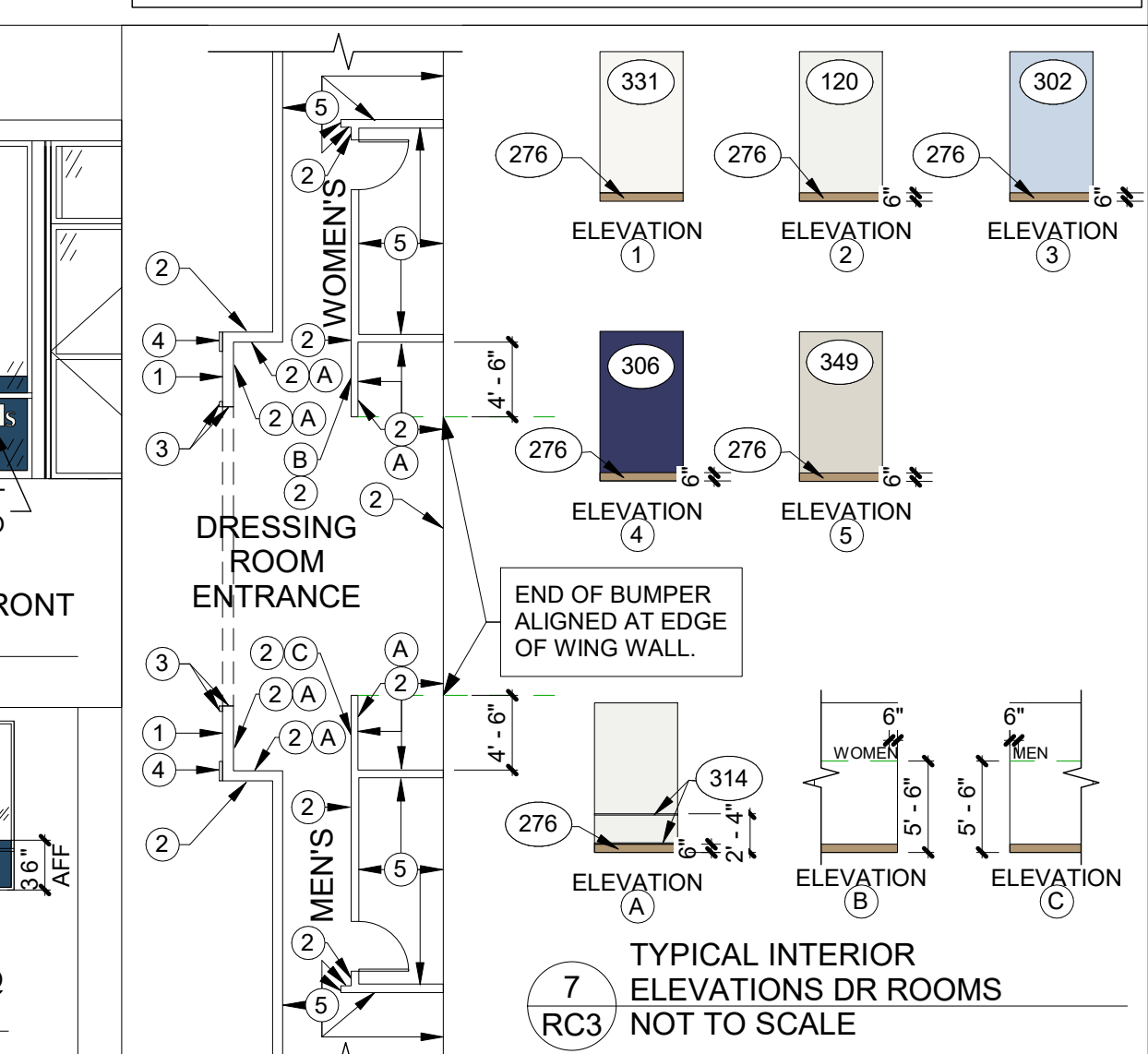
RC2





FINISH NO.	MATERIAL	MANUFACTURER	SPECIFICATION
108	NON-SLIP VINYL COMP. TILE	ARMSTRONG	STANDARD EXCELON #51810 WASHED LINEN
112	VINYL COMPOSITION TILE	ARMSTRONG	STANDARD EXCELON #57501 NOUGAT
113	PAINT	BENJAMIN MOORE	#0022 SUPER SPEC URETHANE ALKYD GLOSS ENAMEL BASE, 90% COLOR, DICK GRAY WITH SAND ADDED FOR NON-SLIP FINISH
115	PAINT	BENJAMIN MOORE	REGAL #668 "DUNE WHITE" (SEMI-GLOSS 333)
116	ENTRANCE GRID MATTING	MAITWORKS	#M41 "SUPER WHITE"
117	PAINT	BENJAMIN MOORE	ROC-161 "CEDAR KEY" (SEMI-GLOSS)
120	PAINT	BENJAMIN MOORE	#001 "SUPER WHITE"
130	COVE BASE	SCHLUTER SYSTEMS	#OC-66 "DUNE WHITE" (SEMI-GLOSS)
137	EIPS	DRYVIT	#K10 "CHINA WHITE" (SANDBLAST FINISH)
138	PAINT	BENJAMIN MOORE	#001 "SUPER WHITE"
211	NON-SLIP VINYL COMPOSITION	ARMSTRONG	#51810 WASHED LINEN
218	CORNER GUARD	PAWING	CLEAR LEXAN STYLE #CG-17, 1 1/8" X 1 1/8" X 4 1/4" LENGTH ALL CORNER GUARDS TO BE FASTENED TO WALL WITH SCREWS. NO ADHESIVES
219	CORNER GUARD	WINDMILL	INSIDE/OUTSIDE CORNER MOULDING, #3002 COLOR, (FOR SLATWALL COLUMNS IN MOUNT WHITE, NO SUBSTITUTIONS)
238	LAMINATE	FORMICA	POSTFORMED SURFACE, #60902-58
251	VINYL BUMPER RAIL	MCQUE	#600 "DARK PUTTY", 2" IN DIAMETER
276	VINYL COVE BASE	MANNINGTON	#527 "CLAY", TV 6" X 18"
302	PAINT	BENJAMIN MOORE	#001 "SUPER WHITE"
305	PAINT	BENJAMIN MOORE	#001 "SUPER WHITE"
308	VINYL COMPOSITION TILE	ARMSTRONG	#51810 WASHED LINEN
311	LUXURY VINYL TILE	AMTICO	#51810 WASHED LINEN
312	LUXURY VINYL TILE	AMTICO	#51810 WASHED LINEN
314	VINYL BUMPER RAIL	MCQUE	#600 "DARK PUTTY", 2" IN DIAMETER
315	BEAD BOARD WALL SYSTEM	DGS RETAIL	MARSHALLS HOME AREA BEAD BOARD WALL SYSTEM
316	DOUBLE SLOTTED SLATWALL	DGS RETAIL	#1573-60 FROSTY WHITE
317	LAMINATED PANEL	WILSONART	#1573-60 FROSTY WHITE
318	PLASTIC LAMINATE	WILSONART	#1573-60 FROSTY WHITE
319	LAMINATE (FRONTLINE)	FORMICA	#1573-60 FROSTY WHITE
321	SINTRA	DGS RETAIL INC.	PRE-PAINTED BY VENDOR TO MATCH BENJAMIN MOORE #00-65 CHANTILLY LACE (VALANCE)
322	DOUBLE SLOTTED SLATWALL	DGS RETAIL	#1573-60 FROSTY WHITE
323	FRP	MARLITE	STANDARD FRP FINISH, PEBBLED SURFACE, P100 WHITE, (HIGH GLOSS, 1" DIAMETER, 1/2" AIR SPACER, 1/4" CLEAR)
324	LAMINATE PANEL	WILSONART	#1573-60 FROSTY WHITE
325	VINYL	DGS RETAIL INC.	MARSHALLS - 3M DARK BLUE
326	SPANDREL GLASS	SOLAR SEAL COMPANY	1" CLEAR GLASS WITH SPANDREL, 1/4" CLEAR WITH #4023 HARMONY BLUE (3), 1/2" AIR SPACER, 1/4" CLEAR
327	EIPS	DRYVIT	#K10 "CHINA WHITE" (SANDBLAST FINISH)
328	PAINT	BENJAMIN MOORE	#001 "SUPER WHITE"
329	EIPS	DRYVIT	#K10 "CHINA WHITE" (SANDBLAST FINISH)
330	EIPS	DRYVIT	#K10 "CHINA WHITE" (SANDBLAST FINISH)
331	WALLCOVERING	MOHENTUM	#578 "MOONLIGHT BLUE" (SANDBLAST FINISH)
332	CROWN MOULDING	TVA	WIPR83-PF1 PRIME PINE #30345 CASING, PAINT #304
333	BEAD BOARD	DGS RETAIL INC.	UNIVERSAL BEAD BOARD WALL COVER PANEL
334	WALLCOVERING	MDC	CANDACE OLSEN, "ROMANCE EROSY" #TJX #107 (MENS) NOTE: WALL COVERING TO MATCH UP AT REPEATS
335	WALLCOVERING	MDC	CANDACE OLSEN, "ROMANCE STEEL" #TJX #112 (WOMENS) NOTE: WALL COVERING TO MATCH UP AT REPEATS
336	VINYL BUMPER RAIL	MCQUE	#600 "DARK PUTTY", 2" IN DIAMETER
337	VINYL BUMPER RAIL	MCQUE	#600 "DARK PUTTY", 2" IN DIAMETER
338	LAMINATED PANEL	SUNBRELLA	MARINE BLUE
339	CERAMIC TILE	DALTILE	12" X 12" X 1/2" VOLUME 1.0, STEREO REGR, WALL TILE #VLT3, INSTALLED VERTICALLY, WITH 2" OF MATCHING BULLNOSE MOLDING #B-4309, GROUT BY MAPEI #27 SILVER (917)
340	CERAMIC TILE	DALTILE	12" X 12" X 1/2" INDUSTRIAL PARK, CHARCOAL GRAY, FLOOR TILE #F09, GROUT BY MAPEI #27 SILVER (917)
343	PAINT	BENJAMIN MOORE	#110 CORONADO SUPER KOAT 500 DRY FALL LATEX PAINT FLAT, TINTED TO MATCH BENJAMIN MOORE, ROC-65 "CHANTILLY LACE"
345	VINYL COVE BASE	MANNINGTON	#527 "CLAY", TV 6" X 18"
346	LUXURY VINYL TILE	PARTERRE	NUDE MAPLE #V338 PLANK IN 3 MM THICKNESS
349	PAINT	BENJAMIN MOORE	SALICIA MIST #C-27
350	GOLD TRIM	DGS RETAIL	GOLD TRIM, SEE FIXTURE MANUAL FOR INSTALLATION
351	LUXURY VINYL TILE	MANNINGTON	SPACIA "WHITE MAPLE" #V338
408	VINYL BUMPER RAIL	MCQUE	#600 "DARK PUTTY", 2" IN DIAMETER
407	VINYL BUMPER RAIL	MCQUE	#600 "DARK PUTTY", 2" IN DIAMETER
414	VINYL COVE BASE	ARMSTRONG	#80 STONE, 6"
EX	EXISTING	EXISTING	EXISTING FINISH TO REMAIN

1	CUP DISPENSER, MOUNTED AT 40" A.F.F.
2	AUTOMATIC SOAP DISPENSER, MOUNTED AT 40" A.F.F. (AT THE OPERATING POINT)
3	XLERATOR XL-88 ELECTRIC HAND DRYER, MOUNTED AT 40" A.F.F. (AT THE OPERATING POINT) BOTTOM: X-CHARGER COMBO KIT #4801
4	OPTIONAL SANITARY NAPKIN DISPENSER, MOUNTED AT 40" A.F.F. (AT THE OPERATING POINT) (DO NOT INSTALL - ROLL INTO PARTITION)
5	SANITARY NAPKIN DISPOSAL @ 15" A.F.F.
6	9" X 12" HIGH 1/4" PLATE GLASS MIRROR OVER ENTIRE WIDTH OF SINK. COUNTERTOP, EDGE PROTECTED WITH 1/4" J-MOLDING, BOTTOM MOUNTED AT 36" A.F.F. (TOP OF BACKSPLASH)
7	DEODORANT HOLDER @ 90" A.F.F.
8	36" GRAB BAR @ 36" A.F.F.
9	36" GRAB BAR @ 36" A.F.F.
10	TOILET PAPER HOLDER @ 21" A.F.F. WITH DISPENSING POINT LOCATED 7" TO 10" IN FRONT OF TOILET
11	SEAT COVER DISPENSER @ 40" A.F.F. DISPENSING @ 48" A.F.F.
12	AS USUAL SEAM-RECESSED WARE RECEPTACLE
13	TOILET PARTITION BY GLOBAL STEEL PRODUCTS, COLOR: CHARCOAL #1213. PARTITION DOORS TO HAVE SOLID WOOD CORES. ALL PARTITION DOORS TO HAVE A COAT HOOK, BUMPER, MOUNT 48" MAX. AT HP STALL. DOORS AND 60" MAX. FOR NON HP STALL DOORS.
14	TOP OF SEAT @ 17" A.F.F.
15	BABY CHANGING STATION MOUNTED WHEN OPEN THE TOP SURFACE IS 33" A.F.F. WHEN TO THE HULL, SHOULD BE NO HIGHER THAN 48" A.F.F.
16	RESTROOM ENTRY THRESHOLD TRANSITION, SCHLUTER RENO-RAMP AER1008S (ANODIZED ALUMINUM)
17	URNAL SCREEN BY GLOBAL STEEL PRODUCTS, COLOR: CHARCOAL #1213.
18	48" INCH STAINLESS STEEL CORNER GUARDS, AS SUPPLIED BY ATR SALES INC FOR EVC



NOTE: ALL DOORS AND FRAMES NOT SHOWN ON THE ELEVATION SHEET (C4) TO BE PAINTED SAME COLOR AS SALES FLOOR DOORS AND FRAMES.

SPECIFICATIONS FOR V.V.C. INSTALLATION

NEW CONSTRUCTION: THE G.C. SHALL SEE THAT SURFACES PRESENT A TRUE SMOOTH, LEVEL FINISH FREE FROM CRACKS, DIRT, DUST, IRREGULARITIES, ROUGH SPOTS AND INDENTATIONS. A GOOD QUALITY NAMED BRAND WHITE OIL BASED PRIMER SHALL BE USED ON ALL NEW DRYWALL TO EASE APPLICATION AND FUTURE REMOVAL.

RENOVATIONS: OLD WALLCOVERING SHALL BE REMOVED AND WALLS ARE TO BE WASHED AND SANDED TO REMOVE ANY OLD ADHESIVE. IF NECESSARY THEY SHALL BE RE-PRIMED WITH AN OIL BASED WHITE PRIMER.

ADHESIVE: GUARD FC-100 OR ANY OTHER GOOD QUALITY HEAVY DUTY ADHESIVE IS RECOMMENDED.

DO NOT "RAILROAD" VINYL WALL COVERING.

ALL WORK SHALL BE COMPLETED IN A NEAT AND PROFESSIONAL MANNER.

CORNER GUARDS (TYP.) @ ALL 90° CORNERS SHALL RECEIVE PAWLING CLEAR LEXAN STYLE #CG-17, 1 1/8" X 1 1/8" X 4" LENGTH (EXCEPT BOVED COLUMNS AT 5" O.C. A.F.F.). NO SUBSTITUTIONS. ALL CORNER GUARDS TO BE FASTENED TO WALL WITH SCREWS. NO ADHESIVES.

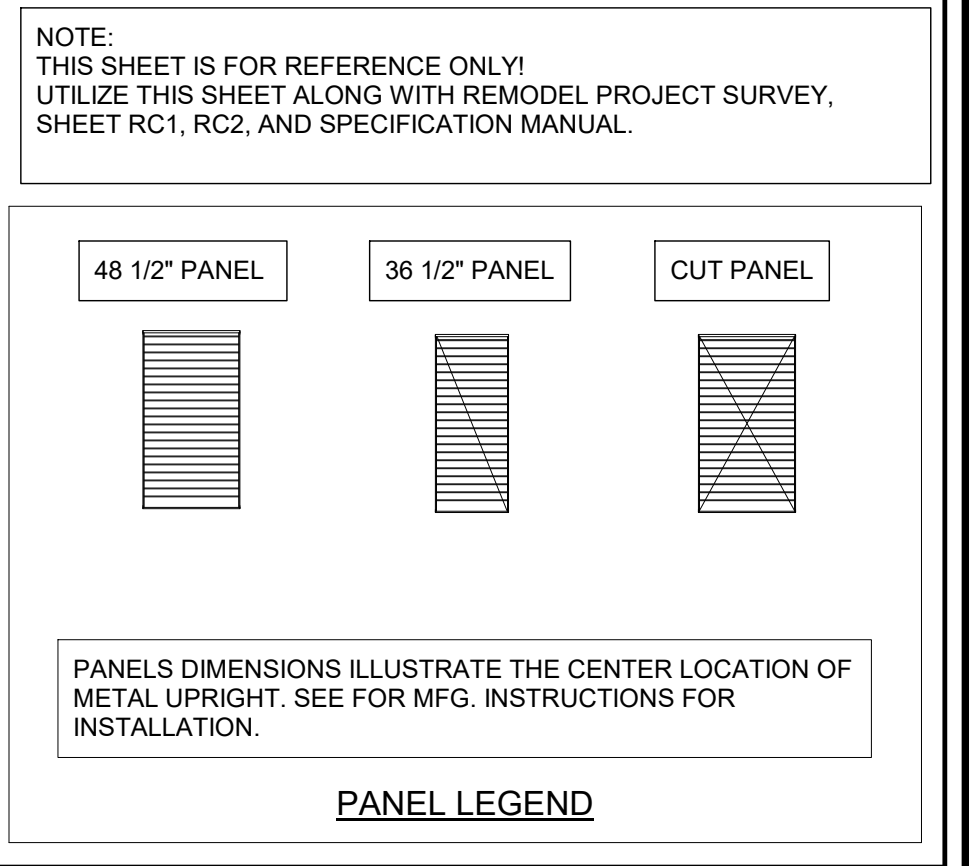
SLATWALL PANEL SYSTEMS

REFER TO SECTION 6A OF THE OUTLINE SPECIFICATION FOR WORK RESPONSIBILITY REGARDING SLATWALL PANEL SYSTEM.

INSTALLATION INSTRUCTIONS FOR PREFABRICATED WALL PANEL (SLATWALL) AND METAL SLATWALL COMPONENTS ARE INCLUDED AS A PART OF THE PACKAGE. IT IS THE RESPONSIBILITY OF THIS CONTRACTOR TO BECOME FAMILIAR WITH THESE INSTRUCTIONS PRIOR TO PROVIDING A PRICE OR COMMENCEMENT OF WORK.

NOTE: NEW FOCAL WALL PANEL HORIZONTAL SLOTTING (8" O.C.) TO ALIGN WITH EXISTING WALL SYSTEM.

NOTE: G.C. TO PROVIDE NEW BLOCKING AS REQUIRED FOR NEW FOCAL WALL SYSTEM.



PANELS DIMENSIONS ILLUSTRATE THE CENTER LOCATION OF INSTALLATION.

NO.	DESCRIPTION	DATE
1	NO CHANGES TO THIS SHEET	3/20/2023

770 Cochituate Road | Framingham, MA 01701

LONGMONT, CO

INTERIOR ELEVATIONS

Deal Type: REMODEL
Store Number: 0323
Project Start Date: 01/03/2023
Planned By: PGP
Criteria Set By: PGP
Checked By: JR/DM

RC3

Scale: As indicated