



12104 Deike Ct.
Cheyenne, WY 82009

Fo

M-H Real Estate, LLC
11120 Tomahawk Creek Pkwy
Suite 200
Leawood, Kansas 66211
(816)483-6444
FAX (816)483-5842

Project No : PKMR# 23.011

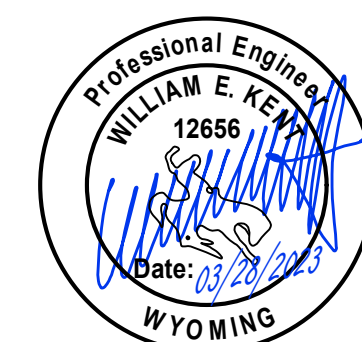
Date: 03/30/22

Issued For: PERMIT SET

REVISIONS

[illegible]

REGISTRATION



PROJECT TEAM

ARCHITECT	FINKLE+WILLIAM ARCHITECTURE
CIVIL	KIMLEY-HORN
LANDSCAPE	KIMLEY-HORN
FOUNDATIONS	BSE
STRUCTURAL	BSE
PLUMBING	PKMR
MECHANICAL	PKMR
ELECTRICAL	PKMR
FIRE PROTECTION	
CONTRACTOR	BRINKMANN CONSTRUCTORS



SHEET TITLE

FLOOR PLAN
OFFICE
ELECTRICAL
SPECIAL SYSTEMS

E3.01

GEN. SPECIAL SYSTEMS NOTES

1. REFER TO GENERAL NOTES ON MEP COVER SHEET FOR ADDITIONAL REQUIREMENTS OF WORK.
2. REFER TO LOW VOLTAGE RISER DIAGRAMS / DETAILS FOR WORK THAT MAY NOT BE SHOWN ON PLANS.
3. EXACT MECHANICAL EQUIPMENT LOCATIONS MAY NOT BE SHOWN FOR CLARITY. COORDINATE EXACT LOCATIONS OF ALL MECHANICAL EQUIPMENT WITH MECHANICAL CONTRACTOR.
4. COORDINATE EXACT LOCATIONS OF CEILING MOUNTING WITH MECHANICAL EQUIPMENT, LIGHTWORK, PAVING, FANIC DIFFUSERS, SPROKKLER HEADS, LIGHT FIXTURES, ETC.
5. RECESS MOUNT ALL DEVICES AND CONCEAL CONDUIT IN METAL STUD AND CHAIN WALLS (TYPICAL). DEVICES AND CONDUIT MAY RUN EXPOSED ON WALLS IF APPROVED. WHERE CONDUIT MUST BE RUN EXPOSED IN OPEN CEILING AREAS, PAINT ALL CONDUIT AND MOUNTING ACCESSORIES TO MATCH SURROUNDING SURFACES.
6. ALL CONDUIT AND WIRING/CABLE SHALL BE RUN OVERHEAD AND NOT DOWN THROUGH FLOORS/BELONG UNB. UNLESS.
7. PLENUM TUBING CARRYING MAY BE RUN OPEN ABOVE LAY-IN CEILINGS. WHERE CABLES RUN IN OPEN CEILING AREAS, ROUTE IN CONDUIT.
8. ALL WIRELESS ACCESS POINTS TO BE OWNER PROVIDED AND CONTRACTOR INSTALLED.

SPECIAL SYSTEMS KEYED NOTES

(SOME NOTES MAY NOT BE USED.)

- 1 PAGING SYSTEM, POWER SUPPLIES, ETC., MOUNTED ON CEILING. REFER TO PAGING SYSTEM DIAGRAM AND SPECIFICATIONS FOR ADDITIONAL INFORMATION.
- 2 VERIFY EXIST DATA OUTLET LOCATION/REQUIREMENT FOR EQUIPMENT RACK. PROVIDE INSTALLER/SUPPLIER/PO TO ROUGH-IN.
- 3 INSTALL OUTLETS IN CLOSET/ROOM. CONCEAL ALL CONDUITS FOR SAME. COORDINATE EXACT LOCATIONS WITH ARCHITECT/OWNER.
- 4 INSTALL OUTLETS IN PARTIAL HEIGHT WALL. COORDINATE EXIST LOCATIONS WITH ARCHITECT.
- 5 RECESSED FLOOR BOX. FURNISH WITH RECEPTACLES AND DATA OUTLETS INDICATED. REFER TO NOTES ON POWER PLAN FOR ADDITIONAL INFORMATION. PROVIDE RECESSED JUNCTION BOX WITH ARCHITECT ROUTE CONDUITS IN FLOOR SLAB, THROUGH WALL, AND UP AND ABOVE THE ACCESSIBLE CEILING.
- 6 SECURITY SYSTEM EQUIPMENT BY OTHERS.
- 7 INSTALL CONDUITS FOR NEW TELECOMMUNICATIONS SERVICE ENTRANCE. MAKE UP AT BACKBOARD(S) AND/OR CLOSET. DIRECTED BY THE TELECOMMUNICATIONS UTILITIES. REFER TO SITE PLAN FOR ADDITIONAL INFORMATION AND CONTINUATION.
- 8 1/4"x3/4" THICK FIRE-RATED PLYWOOD BACKBOARD(S) ALONG LENGTH OF WALLS THIS ROOM FOR TELECOMMUNICATIONS EQUIPMENT.
- 9 TELECOMMUNICATIONS SYSTEM FLOOR MOUNT "60" DB/FB". ALL DATA AND/OR VOICE CABLES TO BE EXTENDED TO THIS LOCATION. REFER TO SCHEDULE ON SHEET ES-02 FOR ADDITIONAL INFORMATION.
- 10 COORDINATE EXIST EQUIPMENT LAYOUT THIS ROOM WITH OWNER PRIOR TO INSTALLATION.
- 11 COMBINATION RECESSED WALL BOX. FURNISH WITH RECEPTACLES AND DATA/TV OUTLETS INDICATED. REFER TO NOTES THIS SHEET FOR ADDITIONAL INFORMATION.
- 12 PROVIDE TWO (2) 4" EMPTY CONDUIT SLEEVES WITH BUSHED ENDS THROUGH WALL ABOVE ACCESSIBLE CEILING FOR LOW VOLTAGE CABLE. FIELD VERIFY EXIST LOCATION.
- 13 PROVIDE 2" EMPTY CONDUIT SLEEVE WITH BUSHED ENDS THROUGH WALL ABOVE ACCESSIBLE CEILING FOR LOW VOLTAGE CABLE. FIELD VERIFY EXIST LOCATION.
- 14 FIRE SUPPRESSION MONITORING PANEL. E/C SHALL MAKE PROVISIONS FOR SMOKE/HEAT DETECTOR FOR MONITORING TO REMOTE LOCATION AS DIRECTED BY THE LOCAL A.U. FIELD VERIFY EXIST LOCATION WITH SPRINKLER SYSTEM CONTRACTOR.
- 15 PROVIDE BACKBOX AND 1" CONDUIT FOR DATA CABLEING WHERE WIRELESS ACCESS REQUIRED BY SPRINKLER SYSTEM CONTRACTOR.
- 16 E/C TO INSTALL EXTERIOR WALL-MOUNT ANTENNA. WIRELESS ACCESS POINT AND 3/4" CABLE LEADS PROVIDED BY OWNER. ROUTE (4) CABLES BETWEEN ANTENNA AND WAP THROUGH 1" SLEEVE IN EXTERIOR WALL. CAT 6. E/C TO PROVIDE 1" CONDUIT THROUGH 1" SLEEVE IN EXTERIOR WALL. COORDINATE EXIST LOCATION WITH OWNER. MAKE ALL CONNECTIONS.
- 17 QUANTITY OF DEVICES AS REQUIRED PER SCHEDULE SYSTEM DESIGN. COORDINATE WORK WITH SPRINKLER SYSTEM CONTRACTOR.
- 18 PROVIDE FINISHED BACKBOX AND 3/4" CONDUIT FOR PAGING SPEAKER AND CABLEING WHERE SPEAKER IS LOCATED IN EXPOSED CEILING.
- 19 INSTALL OUTLET FOR WINDING ROOM CLOSET/ROOM OUTSIDE OF CLASSIFIED HAZARDOUS AREA, AND A MINIMUM OF 3' AWAY FROM PERSONNEL DOOR OPENINGS. COORDINATE EXIST LOCATION WITH PAINT BOOTH E/C FOR SUPERFLOOR/MEZZANINE AREA.
- 20 TELECOMMUNICATIONS SYSTEM WALL MOUNT "RACK" 10". ALL DATA DROPS IN BODY SHOP AND WAREHOUSE/MEZZANINE TO BE EXTENDED TO THIS LOCATION. REFER TO TELECOMMUNICATIONS Riser ON SHEET ES-02 FOR ADDITIONAL INFORMATION.
- 21 INTERLOCK FAN CONTROLLER/PAID WITH FIRE SUPPRESSION MONITORING SYSTEM VIA INTEGRAL FIRE RELAY IN THE FAN CONTROLLER TO SHUT DOWN HIGH VOLUME LOW SPEED FAN UPON ACTIVATION OF THE FIRE SUPPRESSION SYSTEM. PROVIDE RECESSED JUNCTION BOX WITH ARCHITECT ROUTE CONDUITS IN FLOOR SLAB, THROUGH WALL, AND UP AND ABOVE THE ACCESSIBLE CEILING. COORDINATE EXIST BOX SIZE, HEIGHT, LOCATION FOR ALL DEVICES WITH MECHANICAL CONTRACTOR. COORDINATE WORK WITH MECHANICAL CONTRACTOR.
- 22 ONE (1) 1" CONDUIT STUBBED UP TO ROOF FOR SATELLITE ANTENNA CABLEING.
- 23 PROVIDE ROUGH-IN FOR TEMPERATURE CONTROL DEVICES. PROVIDE RECESSED JUNCTION BOX AND 3/4" CONDUIT TO EACH DETECTION CONTROL PANEL. REFER TO MECHANICAL PLAN FOR EXIST LOCATIONS. COORDINATE EXIST BOX SIZE, HEIGHT, LOCATION AND ANY 120V POWER REQUIREMENTS WITH MECHANICAL CONTRACTOR. PROVIDE RECESSED JUNCTION BOX WITH ARCHITECT ROUTE CONDUITS IN FLOOR SLAB, THROUGH WALL, AND UP AND ABOVE THE ACCESSIBLE CEILING. COORDINATE EXIST BOX SIZE, HEIGHT, LOCATION FOR ALL DEVICES WITH MECHANICAL CONTRACTOR.
- 24 PROVIDE ROUGH-IN FOR GAS DETECTION SYSTEM ALARM/BUZZER/NOTIFICATION DEVICES. PROVIDE RECESSED JUNCTION BOX WITH 3/4" CONDUIT TO GAS DETECTION CONTROL PANEL. REFER TO MECHANICAL PLAN FOR EXIST LOCATIONS. COORDINATE EXIST BOX SIZE, HEIGHT, LOCATION FOR ALL DEVICES WITH MECHANICAL CONTRACTOR.
- 25 MOTION SENSOR MOUNTED TO BOTTOM OF STRUCTURE. ROUTE ONE (1) 3/4" CONDUIT TO OVERHEAD DOOR OPERATOR FOR OPERATION.
- 26 1"-1/4" CONDUIT FROM FLOOR BOX TO TV BACK BOX FOR HOW/DATE DATA.
- 27 WIRELESS ACCESS POINT TO BE OWNER PROVIDED AND CONTRACTOR INSTALLED. TYPICAL. ALL WIRELESS ACCESS POINTS.
- 28 SWITCH TO TOGGLE OVERHEAD DOOR MOTION SENSING ON/OFF.

COMBINATION TV BOX

COMBINATION POWER/DATA/CABLE TV OUTLET:
TWO-GANG, RECESSED, WALL MOUNT BOX FOR COMMERCIAL NEW WORK.
STEEL HOUSING WITH 3/4" KNOCKOUT FOR POWER AND TWO (2) 1-1/4"
KNOCKOUTS FOR LOW VOLTAGE CABLING. FURNISH WITH ADJUSTABLE
TRIM RING FOR FLUSH MOUNTING. DIVIDED BOX WITH TWO SEPARATE
SECTIONS FOR LINE VOLTAGE AND LOW VOLTAGE CONNECTIONS. PASS &
SEYMOUR #1V2MM OR APPROVED EQUAL.

FURNISH WITH ONE (1) DECORA DUPLEX POWER RECEPTACLE AND DATA JACK AND CABLE TV OUTLET AS INDICATED ON PLANS. PROVIDE 3/4" CONDUIT FOR POWER, 1-1/4" CONDUIT FOR DATA/CABLE STUBBED UP TO ABOVE THE ACCESSIBLE CEILING AND 1-1/4" CONDUIT FOR DATA/CABLE FROM FLOOR BOX IN SLAB. FURNISH WITH ALL REQUIRED MOUNTING ACCESSORIES NOT LISTED. UL LISTED. FINISH TO MATCH OTHER BUILDING DEVICES.

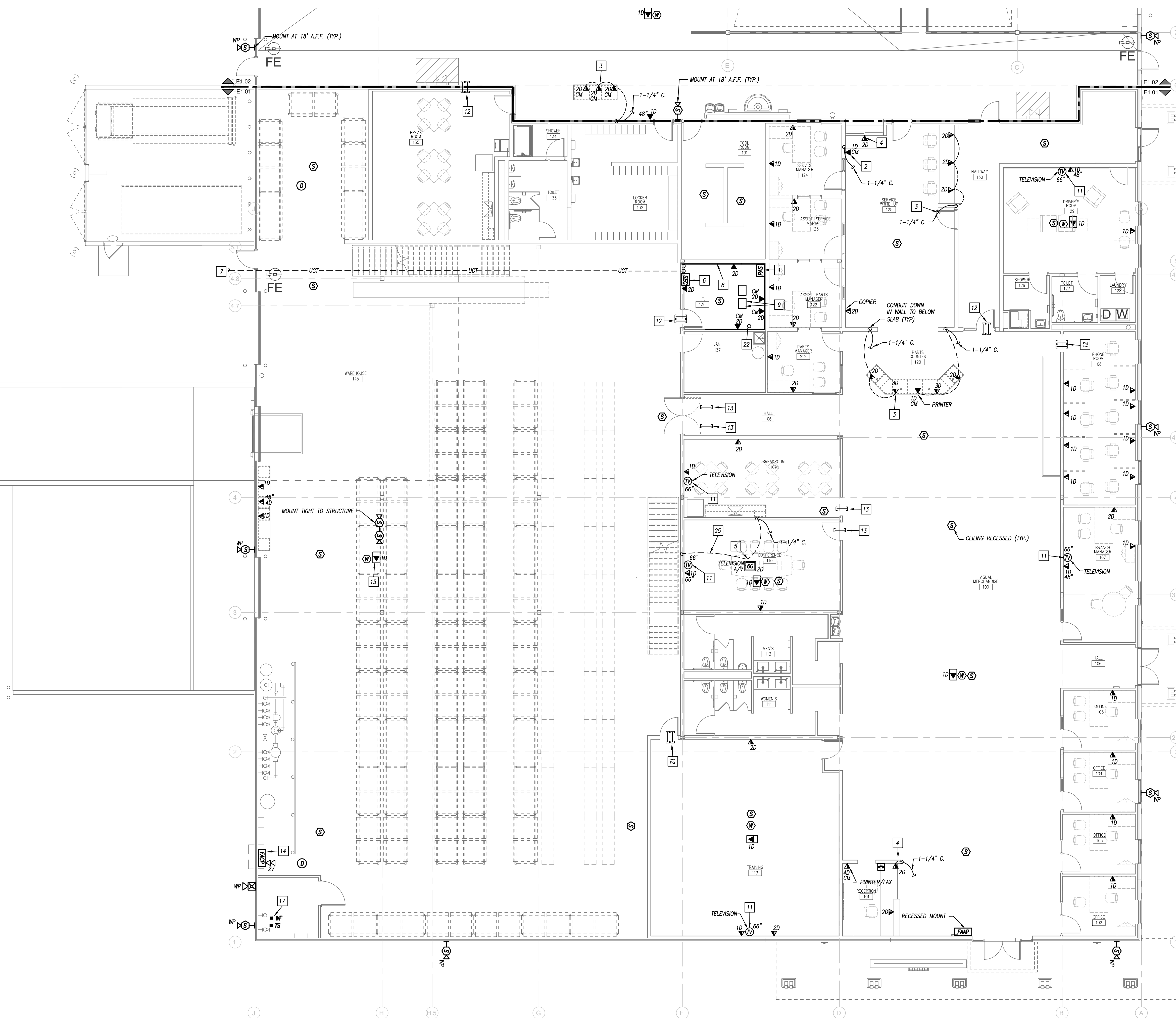
POWER SYSTEM

POWER RECEPTACLES AND EQUIPMENT INFORMATION SHOWN ON THIS SHEET IS FOR THE PURPOSE OF COORDINATING LOCATIONS WITH POWER DEVICES AND EQUIPMENT AND SHOWN FOR REFERENCE ONLY. REFER TO POWER PLANS FOR COMPLETE POWER SYSTEMS INFORMATION.

DESCRIPTION OF WORK

ELECTRICAL CONTRACTOR SHALL PROVIDE A COMPLETE TELECOMMUNICATIONS SYSTEM INCLUDING CONDUIT, BACKBOXES, CONDUIT SUPPORT, CONDUIT SLEEVES, CABLING, FIBER, CABLING SUPPORT, CABLE TRAY, DEVICES, COVERPLATES, EQUIPMENT RACK, PATCH PANELS, PATCH CORDS, TERMINATIONS, LABELING, ETC., FOR A COMPLETE TELECOMMUNICATIONS SYSTEM FOR PHONE, DATA, AND CABLE TV.

ELECTRICAL CONTRACTOR SHALL PROVIDE A COMPLETE PAGING SYSTEM INCLUDING CABLING, CONDUIT, CONDUIT AND CABLING SUPPORT, SPEAKERS, EQUIPMENT, POWER SUPPLIES, TERMINATIONS, ETC., FOR A COMPLETE PAGING SYSTEM.



 **FLOOR PLAN - OFFICE**
ELECTRICAL - SPECIAL SYSTEMS
1/8" = 1'-0"