

RNL

1515 ARAPAHOE STREET
TOWER III, SUITE 700
DENVER, COLORADO 80202
303 295 1717 t
303 292 0845 f

Technology Plus
INCORPORATED

COMMUNICATIONS TECHNOLOGY PLANNING
Aurora, Colorado 80012
Ph: 303-340-8228
Fax: 303-340-8233

RNL - ARCHITECT
RNL - LANDSCAPE ARCHITECT
RNL - MECHANICAL PLUMBING ELECTRICAL
SA MIRO - STRUCTURAL ENGINEER
LUND PARTNERSHIP - CIVIL ENGINEER
TECHNOLOGY PLUS - COMMUNICATIONS

CITY OF COMMERCE CITY
CIVIC AND JUSTICE CENTER

7887 EAST 60TH AVENUE
COMMERCE CITY, COLORADO 80022

FOR CONSTRUCTION	05.15.06
Technology Coordination	03.20.06
DESIGN DEV - GMP	01.06.06
SCHEMATIC DESIGN	10.07.05

PROJECT No: 1021-1895-02
DATE: 1.06.06
SCALE: AS SHOWN

COMMUNICATIONS
Structured Cabling Plan

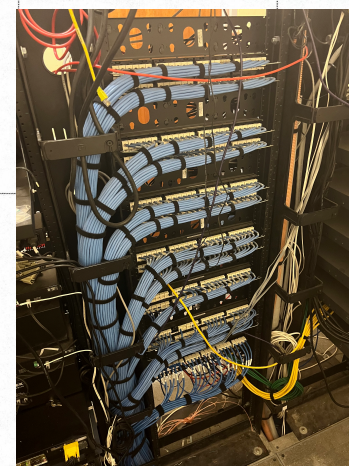
T101B

GENERAL NOTES - CABLING

1. TC TO PROVIDE TELECOMMUNICATIONS BASKET TRAY AND J-HOOK SUPPORT FOR NETWORK CABLING. TC TO PROVIDE SEPARATE J-HOOK SUPPORT FOR SECURITY CABLING. KEEP MINIMUM 6" SEPARATION FROM NETWORK CABLING.
2. ALL NETWORK CABLING TO BE PLENUM RATED UON. REFER TO SPECS FOR CABLE TYPES AND COLORS.
3. TC TO PROVIDE ALL SECURITY AND CCTV CABLING. REFER TO ONE-LINE DRAWING FOR TYPES. SECURITY DEVICES AND FINAL HOOK-UP BY SECURITY CONTRACTOR.
4. TC TO PROVIDE ALL INTERCOM/PAGING CABLING. REFER TO ONE-LINE DRAWING FOR TYPES. INTERCOM AND PAGING DEVICES AND FINAL HOOK-UP BY SECURITY CONTRACTOR.
5. TC TO PROVIDE NETWORK CABLING FOR AUDIO VISUAL DEVICES. AV CONTRACTOR TO PROVIDE CABLING BETWEEN DEVICES. FINAL EQUIPMENT HOOK-UP BY AV CONTRACTOR.
6. TC TO PROVIDE STAINLESS STEEL WALL PLATES WITH MOUNTING STUDS AND PANDUIT CAT 6 JACK FOR ALL WALL PHONE LOCATIONS.
7. TC TO PROVIDE RG-6 PLENUM COAX FOR TV OUTLETS TERMINATED USING COMPRESSION TYPE F-CONNECTORS. INSTALL F-81 FITTING AT FACEPLATE. FOR RUNS EXCEEDING 150', INSTALL RG-11 PLENUM COAX. ROUTE TO NEAREST TR. TV OUTLETS IN EOC TO ROUTE TO WALL BEHIND EQUIPMENT RACK WITH 15' SLACK.

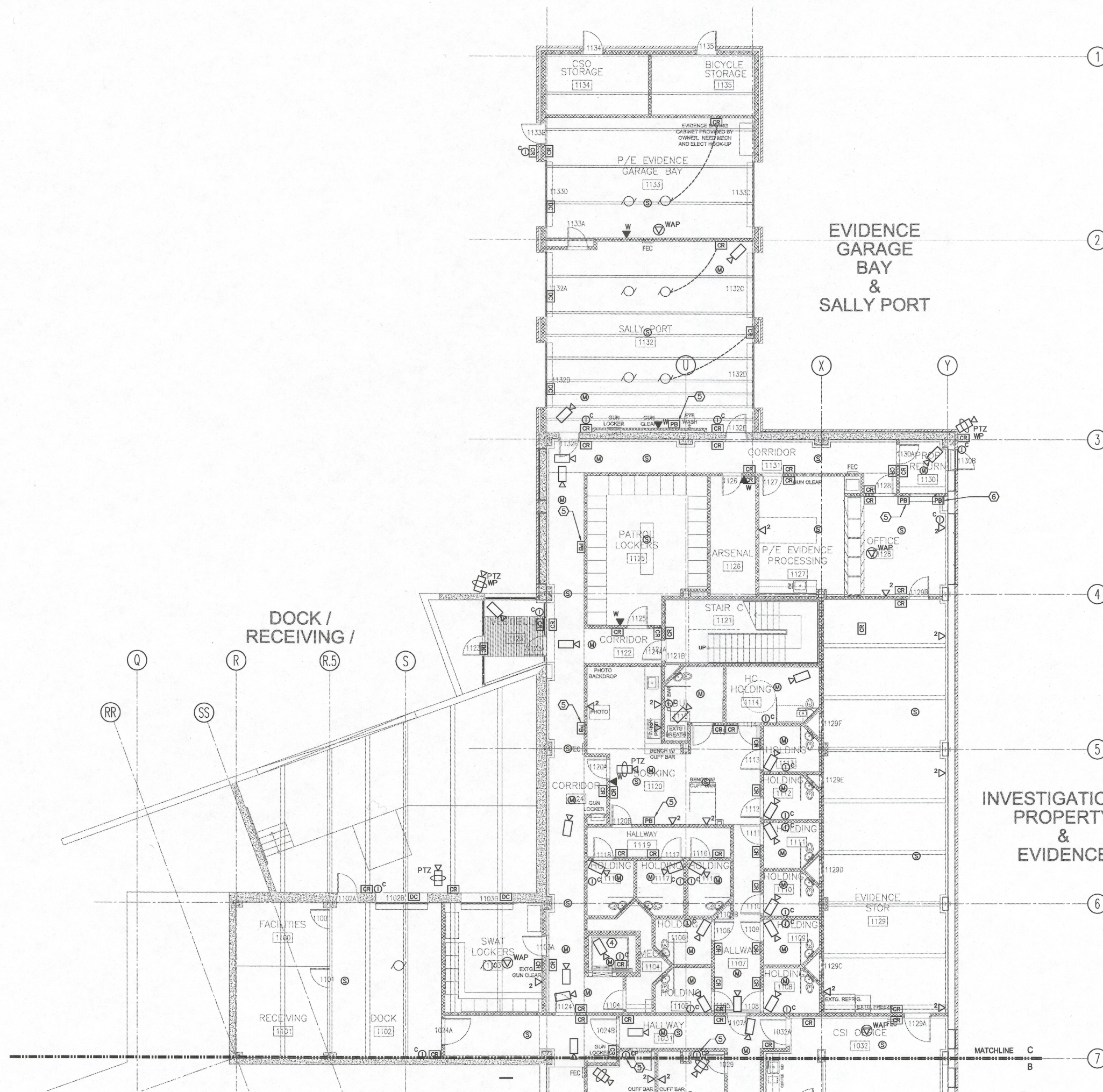
SHEET NOTES - CABLING

1. EC TO PROVIDE (6) 4" CONDUITS TO STREET FOR TELE/DATA ENTRY. (3) TO EAST AND (3) TO SOUTH.
2. EC TO PROVIDE (3) 4" CONDUIT WITH PULLSTRING STUBBED 8" BELOW CEILING. ROUTE TO DATA CENTER.
3. EC TO PROVIDE (3) 4" CONDUIT SLEEVES STUBBED 8" BELOW CEILING AND STUBBED 4" ABOVE SUB-FLOOR IN 2ND FLOOR HALLWAY ABOVE FOR ROUTING OF 1ST FLOOR SECURITY CABLING.
4. TC TO PROVIDE (1) CAT 6 FOR ELEVATOR EMERGENCY PHONE.
5. PANIC ALARM. MAY BE BUTTON OR INTERCOM DEPENDING ON LOCATION. TC TO ROUTE CABLE FOR DEVICE AS INDICATED ON DRAWING T002.



1 LEVEL 1 STRUCTURED CABLING PLAN AREA "B"
1/8" = 1' - 0"

0 4' 8' 16'
SCALE: 1/8" = 1'-0"



1 LEVEL 1 STRUCTURED CABLING PLAN AREA "C"
 1/8" = 1' - 0"
 SCALE: 1/8" = 1'-0"

GENERAL NOTES - CABLING

1. TC TO PROVIDE TELECOMMUNICATIONS BASKET TRAY AND J-HOOK SUPPORT FOR NETWORK CABLING. TC TO PROVIDE SEPARATE J-HOOK SUPPORT FOR SECURITY CABLING. KEEP MINIMUM 6" SEPARATION FROM NETWORK CABLING.
2. ALL NETWORK CABLING TO BE PLENUM RATED UOM. REFER TO SPECS FOR CABLE TYPES AND COLORS.
3. TC TO PROVIDE ALL SECURITY AND CCTV CABLING. REFER TO ONE-LINE DRAWING FOR TYPES. SECURITY DEVICES AND FINAL HOOK-UP BY SECURITY CONTRACTOR.
4. TC TO PROVIDE ALL INTERCOM/PAGING CABLING. REFER TO ONE-LINE DRAWING FOR TYPES. INTERCOM AND PAGING DEVICES AND FINAL HOOK-UP BY SECURITY CONTRACTOR.
5. TC TO PROVIDE NETWORK CABLING FOR AUDIO VISUAL DEVICES. AV CONTRACTOR TO PROVIDE CABLING BETWEEN DEVICES. FINAL EQUIPMENT HOOK-UP BY AV CONTRACTOR.
6. TC TO PROVIDE STAINLESS STEEL WALL PLATES WITH MOUNTING STUDS AND PANDUIT CAT 6 JACK FOR ALL WALL PHONE LOCATIONS.
7. TC TO PROVIDE RG-6 PLENUM COAX FOR TV OUTLETS TERMINATED USING COMPRESSION TYPE F-CONNECTORS. INSTALL F-81 FITTING AT FACEPLATE. FOR RUNS EXCEEDING 150', INSTALL RG-11 PLENUM COAX. ROUTE TO NEAREST TR. TV OUTLETS IN EOC TO ROUTE TO WALL BEHIND EQUIPMENT RACK WITH 15' SLACK.

SHEET NOTES - CABLING

1. NOT USED.
2. NOT USED.
3. NOT USED.
4. TC TO PROVIDE (1) CAT 6 FOR ELEVATOR EMERGENCY PHONE.
5. PANIC ALARM. MAY BE BUTTON OR INTERCOM DEPENDING ON LOCATION. TC TO ROUTE CABLE FOR DEVICE AS INDICATED ON DRAWING 1002.
6. PUSH BUTTON FOR DOOR RELEASE.

RNL

1515 ARAPAHOE STREET
 TOWER III, SUITE 700
 DENVER, COLORADO 80202
 303 295 1717 f
 303 292 0845 f

Technology Plus
 INCORPORATED
 COMMUNICATIONS TECHNOLOGY PLANNING
 Aurora, Colorado 80012
 Ph: 303-340-8228
 Fax: 303-340-8233

RNL - ARCHITECT
 RNL - LANDSCAPE ARCHITECT
 RNL - MECHANICAL, PLUMBING, ELECTRICAL
 SA MIRO - STRUCTURAL ENGINEER
 LUND PARTNERSHIP - CIVIL ENGINEER
 TECHNOLOGY PLUS - COMMUNICATIONS

CITY OF COMMERCE CITY
 CIVIC AND JUSTICE CENTER

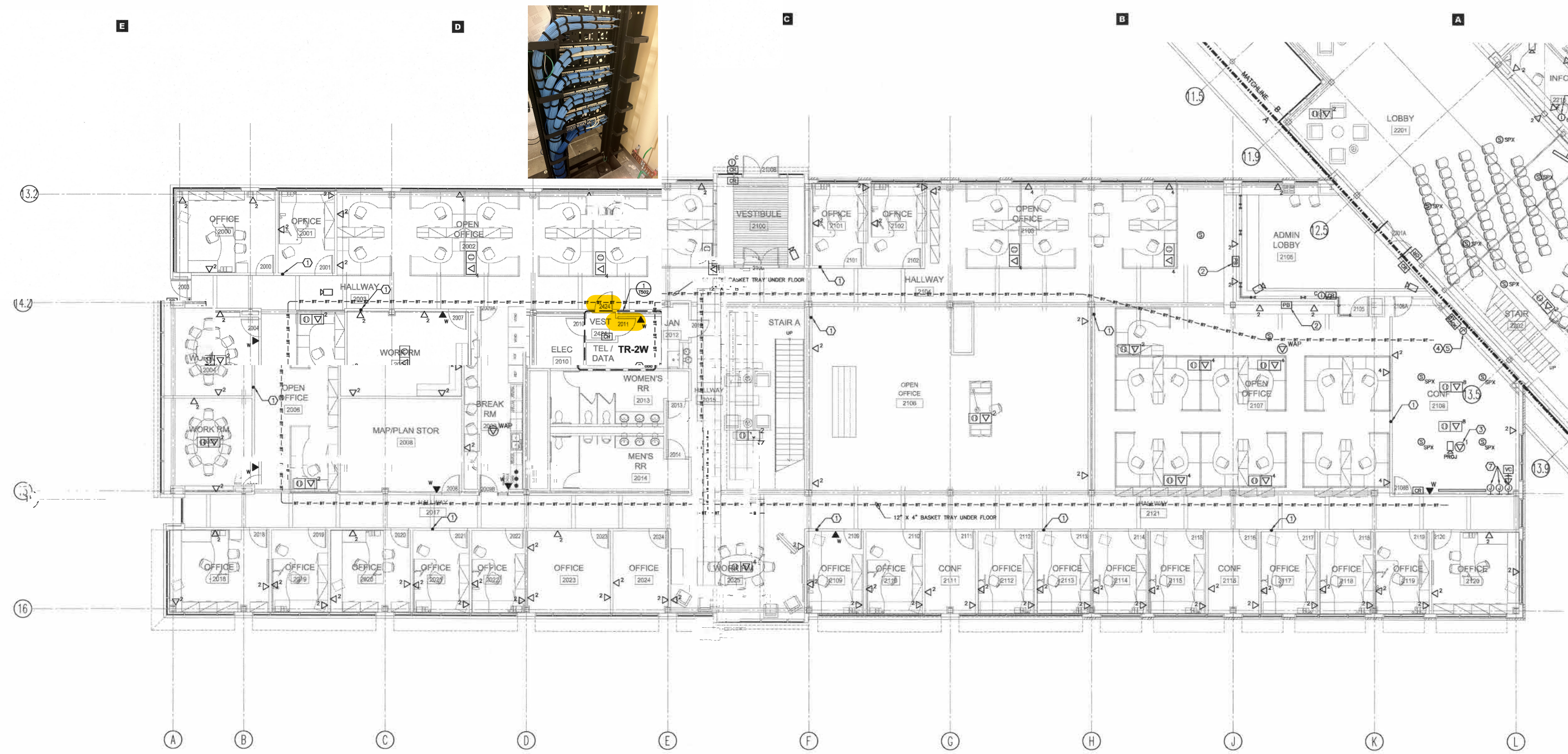
7887 EAST 60TH AVENUE
 COMMERCE CITY, COLORADO 80022

FOR CONSTRUCTION	05.15.06
Technology Coordination	03.20.06
DESIGN DEV - GMP	01.06.06
SCHEMATIC DESIGN	10.07.05

PROJECT No: 1021-1895-02
 DATE: 1.06.06
 SCALE: AS SHOWN

COMMUNICATIONS
 Structured Cabling Plan

T101C



GENERAL NOTES - CABLING

- TC TO PROVIDE TELECOMMUNICATIONS BASKET TRAY AND J-HOOK SUPPORT FOR NETWORK CABLING. TC TO PROVIDE SEPARATE J-HOOK SUPPORT FOR SECURITY CABLING. KEEP MINIMUM 6" SEPARATION FROM NETWORK CABLING.
- ALL NETWORK CABLING TO BE PLENUM RATED UON. REFER TO SPECS FOR CABLE TYPES AND COLORS.
- TC TO PROVIDE ALL SECURITY AND CCTV CABLING. REFER TO ONE-LINE DRAWING FOR TYPES, SECURITY DEVICES AND FINAL HOOK-UP BY SECURITY CONTRACTOR.
- TC TO PROVIDE ALL INTERCOM/PAGING CABLING. REFER TO ONE-LINE DRAWING FOR TYPES, INTERCOM AND PAGING DEVICES AND FINAL HOOK-UP BY SECURITY CONTRACTOR.
- TC TO PROVIDE NETWORK CABLING FOR AUDIO VISUAL DEVICES. AV CONTRACTOR TO PROVIDE CABLING BETWEEN DEVICES. FINAL EQUIPMENT HOOK-UP BY AV CONTRACTOR.
- TC TO PROVIDE STAINLESS STEEL WALL PLATES WITH MOUNTING STUDS AND PANDUIT CAT 6 JACK FOR ALL WALL PHONE LOCATIONS.
- TC TO PROVIDE RG-6 PLENUM COAX FOR TV OUTLETS TERMINATED USING COMPRESSION TYPE F-CONNECTORS. INSTALL F-81 FITTING AT FACEPLATE. FOR RUNS EXCEEDING 150', INSTALL RG-11 PLENUM COAX. ROUTE TO NEAREST TR. TV OUTLETS IN EDC TO ROUTE TO WALL BEHIND EQUIPMENT RACK WITH 15' SLACK.

SHEET NOTES - CABLING

- EC PROVIDED 2" CONDUIT SLEEVE FOR CABLE ROUTING FROM ACCESS FLOOR TO CEILING AREAS.
- PANIC ALARM. MAY BE BUTTON OR INTERCOM DEPENDING ON LOCATION. TC TO ROUTE CABLE FOR DEVICE AS INDICATED ON DRAWING T002.
- EC TO PROVIDE CEILING MOUNTED OUTLET FOR OVERHEAD PROJECTOR. TC TO PROVIDE (1) CEILING MOUNTED CAT 6 OUTLET FOR OVERHEAD PROJECTOR. AV INSTALLER TO PROVIDE PROJECTOR, MOUNT AND FINAL CONNECTION TO AV EQUIPMENT.
- EC TO PROVIDE 8"X8"X4" J-BOX IN WALL FOR AV USE. ROUTE (2) 1" CONDUITS FROM J-BOX, STUBBED 6" BELOW RAISED FLOOR AND (2) 1" CONDUITS FROM J-BOX STUBBED 6" ABOVE CEILING UON.
- TC TO INSTALL (3) CAT 6 AND (1) RG-6 COAX FOR AV USE IN EC PROVIDED 8"X8"X4" AV J-BOX. INSTALL OUTLETS IN AV PROVIDED FACEPLATE OR STORE FOR FUTURE.
- EC TO PROVIDE (3) 4" SLEEVES TO TR-3W ABOVE. STUB 6" BELOW CEILING IN TR-2W AND 4" ABOVE SUB-FLOOR IN TR-3W.
- EC TO PROVIDE 2-GANG J-BOX AT 30" AFF QUANTITY AS SHOWN FOR AV AND/OR TV. FOR EACH J-BOX PROVIDE (1) 1" CONDUIT STUBBED 6" BELOW RAISED FLOOR AND (1) 1" CONDUIT STUBBED 6" ABOVE ACCESSIBLE CEILING.

1 LEVEL 2 STRUCTURED CABLING PLAN AREA "A"
1/8" = 1' - 0"

0 4' 8' 16'
SCALE: 1/8" = 1' - 0"

RNL

1515 ARAPAHOE STREET
TOWER III, SUITE 700
DENVER, COLORADO 80202
303.295.1717
303.292.0845

Technology Plus
INCORPORATED
COMMUNICATIONS TECHNOLOGY PLANNING
Aurora, Colorado 80012
Ph: 303-340-8228
Fax: 303-340-8233

RNL - ARCHITECT
RNL - LANDSCAPE ARCHITECT
RNL - MECHANICAL, PLUMBING, ELECTRICAL
SA MIRO - STRUCTURAL ENGINEER
LUND PARTNERSHIP - CIVIL ENGINEER
TECHNOLOGY PLUS - COMMUNICATIONS

CITY OF COMMERCE CITY
CIVIC AND JUSTICE CENTER

7887 EAST 60TH AVENUE
COMMERCE CITY, COLORADO 80022

FOR CONSTRUCTION	05.15.06
Technology Coordination	03.20.06
DESIGN DEV - GMP	01.06.06
SCHEMATIC DESIGN	10.07.05

PROJECT No: 1021-1895-02
DATE: 1.06.06
SCALE: AS SHOWN

COMMUNICATIONS
Structured Cabling Plan

T102A

RNL

1515 ARAPAHOE STREET
TOWER III, SUITE 700
DENVER, COLORADO 80202
303 295 1717 t
303 292 0845 f

GENERAL NOTES - CABLING

TC TO PROVIDE TELECOMMUNICATIONS BASKET TRAY AND J-HOOK SUPPORT FOR NETWORK CABLING. TC TO PROVIDE SEPARATE J-HOOK SUPPORT FOR SECURITY CABLING. KEEP MINIMUM 6" SEPARATION FROM NETWORK CABLING.

ALL NETWORK CABLING TO BE PLENUM RATED UON. REFER TO SPECS FOR CABLE TYPES AND COLORS.

TC TO PROVIDE ALL SECURITY AND CCTV CABLING. REFER TO ONE-LINE DRAWING FOR TYPES, SECURITY DEVICES AND FINAL HOOK-UP BY SECURITY CONTRACTOR.

TC TO PROVIDE ALL INTERCOM/PAGING CABLING. REFER TO ONE-LINE DRAWING FOR TYPES, INTERCOM AND PAGING DEVICES AND FINAL HOOK-UP BY SECURITY CONTRACTOR.

TC TO PROVIDE NETWORK CABLING FOR AUDIO VISUAL DEVICES. AV CONTRACTOR TO PROVIDE CABLING BETWEEN DEVICES. FINAL EQUIPMENT HOOK-UP BY AV CONTRACTOR.

TC TO PROVIDE STAINLESS STEEL WALL PLATES WITH MOUNTING STUDS AND PANDUIT CAT 6 JACK FOR ALL WALL PHONE LOCATIONS.

TC TO PROVIDE RG-6 PLENUM COAX FOR TV OUTLETS TERMINATED USING COMPRESSION TYPE F-CONNECTORS. INSTALL F-81 FITTING AT FACEPLATE. FOR RUNS EXCEEDING 150', INSTALL RG-11 PLENUM COAX. ROUTE TO NEAREST TR. TV OUTLETS IN EOC TO ROUTE TO WALL BEHIND EQUIPMENT RACK WITH 15' SLACK.



SHEET NOTES - CABLING

① EC PROVIDED 2" CONDUIT SLEEVE FOR CABLE ROUTING FROM ACCESS FLOOR TO CEILING AREAS.

② PANIC ALARM. MAY BE BUTTON OR INTERCOM DEPENDING ON LOCATION. TC TO ROUTE CABLE FOR DEVICE AS INDICATED ON DRAWING 1002.

③ EC TO PROVIDE CEILING MOUNTED OUTLET FOR OVERHEAD PROJECTOR. TC TO PROVIDE (1) CEILING MOUNTED CAT 6 OUTLET FOR OVERHEAD PROJECTOR. AV INSTALLER TO PROVIDE PROJECTOR, MOUNT AND FINAL CONNECTION TO AV EQUIPMENT.

④ EC TO PROVIDE 8"x8"x4" J-BOX IN WALL FOR AV USE. ROUTE (2) 1" CONDUITS FROM J-BOX, STUBBED 6" BELOW RAISED FLOOR AND (2) 1" CONDUITS FROM J-BOX STUBBED 6" ABOVE CEILING UON.

⑤ TC TO INSTALL (3) CAT 6 AND (1) RG-6 COAX FOR AV USE IN EC PROVIDED 8"x8"x4" AV J-BOX. INSTALL OUTLETS IN AV PROVIDED FACEPLATE OR STORE FOR FUTURE.

⑥ NOT USED.

⑦ EC TO PROVIDE 2-GANG J-BOX AT 30" AFF QUANTITY AS SHOWN FOR AV AND/OR TV. FOR EACH J-BOX PROVIDE (1) 1" CONDUIT STUBBED 6" BELOW RAISED FLOOR AND (1) 1" CONDUIT STUBBED 6" ABOVE ACCESSIBLE CEILING.

⑧ EC TO PROVIDE (3) 4" SLEEVES STUBBED DOWN INTO TR-1N (1008) FOR SECURITY AND INTERCOM CABLING. STUB 6" BELOW CEILING IN TR-1N AND 4" ABOVE SUB-FLOOR IN ACCESS FLOOR SPACE.

⑨ EC TO PROVIDE (3) 4" CONDUIT SLEEVES FROM CEILING OF EOC TO DATA CENTER. STUB 6" BELOW CEILING OF EOC AND 4" ABOVE SUB-FLOOR IN DATA CENTER.

⑩ ALL AC OUTLETS EXCEPT COPIER AND LASER PRINTERS IN EOC TO BE ON UPS. ALL OUTLETS TO BE ON GENERATOR.

⑪ EC TO PROVIDE (1) 8"x8"x4" J-BOX IN WALL IN AV CONTROL ROOM. ROUTE (4) 1" CONDUITS FROM J-BOX, STUBBED 6" BELOW RAISED FLOOR AND (4) 1" CONDUITS FROM J-BOX STUBBED 6" ABOVE CEILING UON. LOCATE BOX UNDER SCREEN EDGE AWAY FROM DOOR.

⑫ EC TO PROVIDE CEILING MOUNTED OUTLET FOR DOCUMENT CAMERA. TC TO PROVIDE (1) CEILING MOUNTED CAT 6 OUTLET FOR CAMERA. AV INSTALLER TO PROVIDE CAMERA AND FINAL CONNECTIONS TO AV EQUIP.

⑬ NOT USED.

⑭ EC TO PROVIDE (2) 4" CONDUITS WITH PULLSTRING STUBBED 6" BELOW CEILING. ROUTE TO DATA CENTER ON LEVEL 3.



1 LEVEL 2 STRUCTURED CABLING PLAN AREA "B"
1/8" = 1' - 0"

0 4' 8' 16'
SCALE: 1/8" = 1' - 0"

Technology Plus
INCORPORATED
COMMUNICATIONS TECHNOLOGY PLANNING
Aurora, Colorado 80012
Ph: 303-340-8228
Fax: 303-340-8233

RNL - ARCHITECT
RNL - LANDSCAPE ARCHITECT
RNL - MECHANICAL, PLUMBING, ELECTRICAL
SA MIRO - STRUCTURAL ENGINEER
LUND PARTNERSHIP - CIVIL ENGINEER
TECHNOLOGY PLUS - COMMUNICATIONS

CITY OF COMMERCE CITY
CIVIC AND JUSTICE CENTER

7887 EAST 60TH AVENUE
COMMERCE CITY, COLORADO 80022

FOR CONSTRUCTION	05.15.06
Technology Coordination	03.20.06
DESIGN DEV - GMP	01.06.06
SCHEMATIC DESIGN	10.07.05

PROJECT NO: 1021-1895-02
DATE: 1.06.06
SCALE: AS SHOWN

COMMUNICATIONS
Structured Cabling Plan

T102B

RNL

1515 ARAPAHOE STREET
TOWER III, SUITE 700
DENVER, COLORADO 80202
303 295 1717 t
303 292 0845 f

Technology Plus
INCORPORATED
COMMUNICATIONS TECHNOLOGY PLANNING
Aurora, Colorado 80012
Ph: 303-340-8228
Fax: 303-340-8233

RNL - ARCHITECT
RNL - LANDSCAPE ARCHITECT
RNL - MECHANICAL PLUMBING ELECTRICAL
SA MIRO - STRUCTURAL ENGINEER
LUND PARTNERSHIP - CIVIL ENGINEER
TECHNOLOGY PLUS - COMMUNICATIONS

CITY OF COMMERCE CITY
CIVIC AND JUSTICE CENTER

7887 EAST 60TH AVENUE
COMMERCE CITY, COLORADO 80022

FOR CONSTRUCTION	05.15.06
Technology Coordination	03.20.06
DESIGN DEV - GMP	01.06.06
SCHEMATIC DESIGN	10.07.05

PROJECT No: 1021-1895-02
DATE: 1.06.06
SCALE: AS SHOWN

COMMUNICATIONS
Structured Cabling Plan

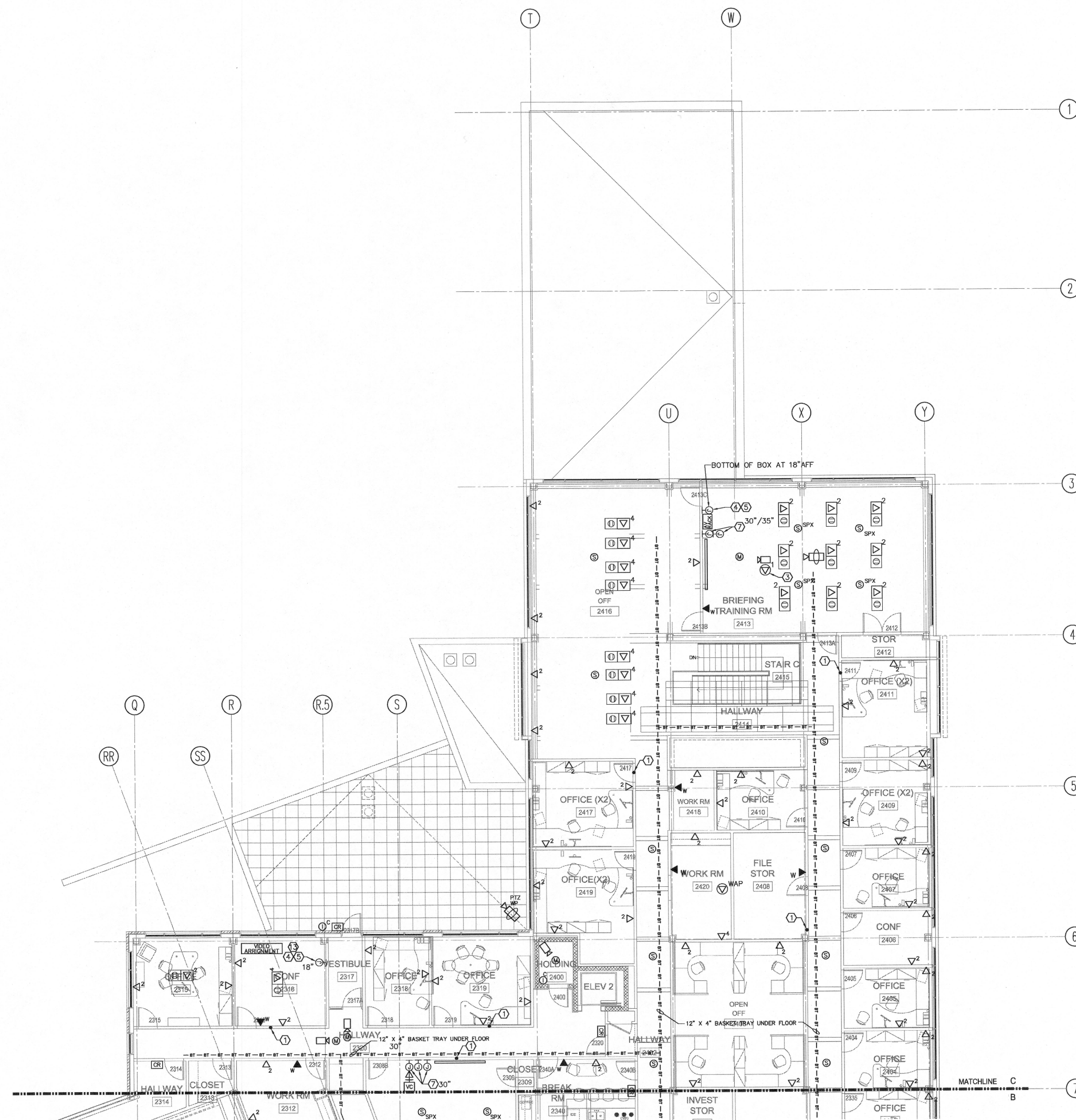
T102C

GENERAL NOTES - CABLING

1. TC TO PROVIDE TELECOMMUNICATIONS BASKET TRAY AND J-HOOK SUPPORT FOR NETWORK CABLING. TC TO PROVIDE SEPARATE J-HOOK SUPPORT FOR SECURITY CABLING. KEEP MINIMUM 6" SEPARATION FROM NETWORK CABLING.
2. ALL CABLING TO BE PLENUM RATED UON. REFER TO SPECS FOR CABLE TYPES AND COLORS.
3. TC TO PROVIDE ALL SECURITY AND CCTV CABLING. REFER TO ONE-LINE DRAWING FOR TYPES, SECURITY DEVICES AND FINAL HOOK-UP BY SECURITY CONTRACTOR.
4. TC TO PROVIDE ALL INTERCOM CABLING. REFER TO ONE-LINE DRAWING FOR TYPES, INTERCOM DEVICES AND FINAL HOOK-UP BY SECURITY CONTRACTOR.
5. TC TO PROVIDE ALL AUDIO VISUAL CABLING. REFER TO ONE-LINE DRAWING FOR TYPES. FINAL HOOK-UP BY AV CONTRACTOR.
6. TC TO PROVIDE STAINLESS STEEL WALL PLATES WITH MOUNTING STUDS AND PANDUIT CAT 6 JACK FOR ALL WALL PHONE LOCATIONS.
7. TC TO PROVIDE RG-6 PLENUM COAX FOR TV OUTLETS TERMINATED USING COMPRESSION TYPE F-CONNECTORS. INSTALL F-81 FITTING AT FACEPLATE. FOR RUNS EXCEEDING 150', INSTALL RG-11 PLENUM COAX. ROUTE TO NEAREST TR. TV OUTLETS IN EOC TO ROUTE TO WALL BEHIND EQUIPMENT RACK WITH 15' SLACK.

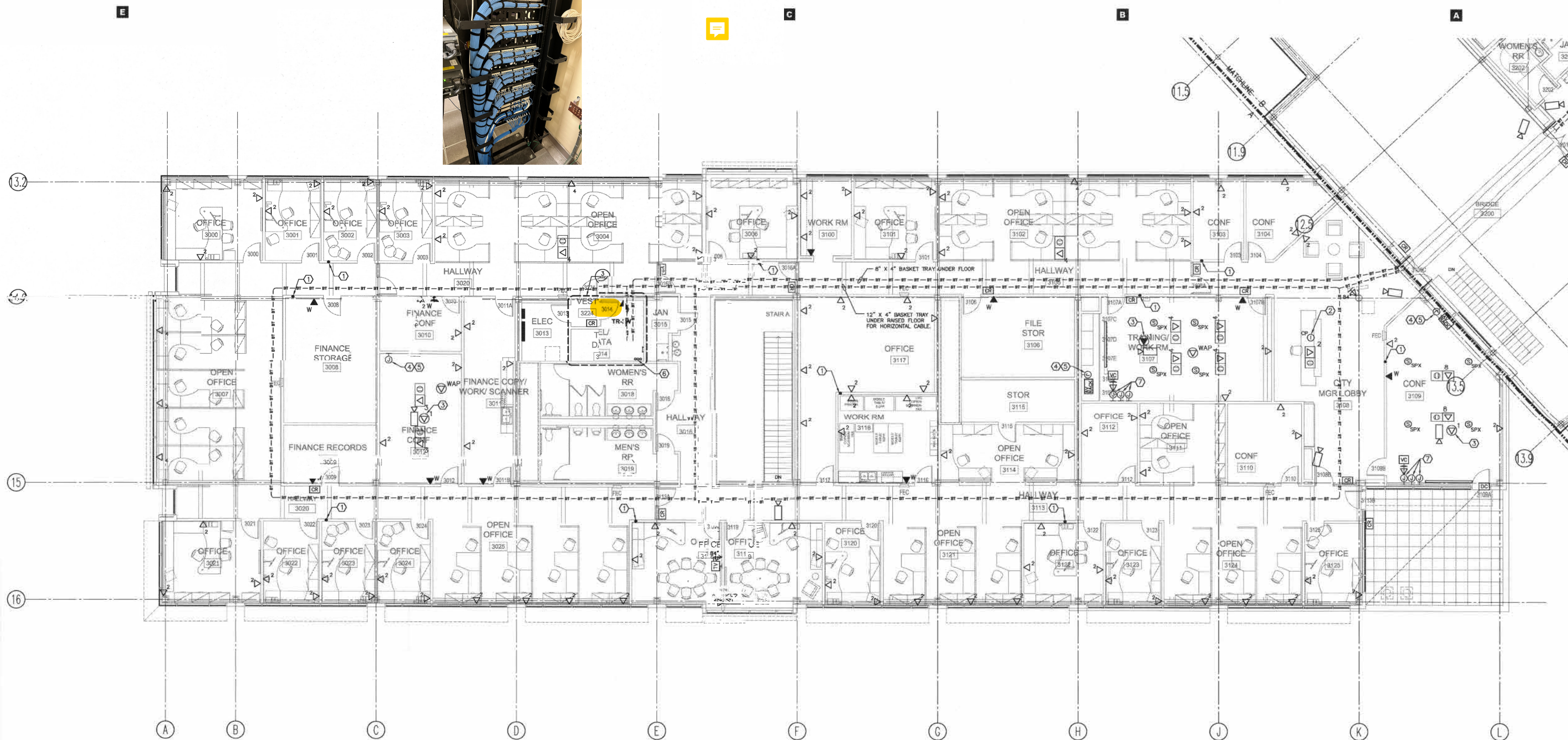
SHEET NOTES - CABLING

1. EC PROVIDED 2" CONDUIT SLEEVE FOR CABLE ROUTING FROM ACCESS FLOOR TO CEILING AREAS.
2. NOT USED.
3. EC TO PROVIDE CEILING MOUNTED OUTLET FOR OVERHEAD PROJECTOR. TC TO PROVIDE (1) CEILING MOUNTED CAT 6 OUTLET FOR OVERHEAD PROJECTOR. AV INSTALLER TO PROVIDE PROJECTOR, MOUNT AND FINAL CONNECTION TO AV EQUIPMENT.
4. EC TO PROVIDE 8"x8"x4" J-BOX IN WALL FOR AV USE. ROUTE (2) 1" CONDUITS FROM J-BOX, STUBBED 6" BELOW RAISED FLOOR AND (2) 1" CONDUITS FROM J-BOX STUBBED 6" ABOVE CEILING UON. LOCATE BOX UNDER SCREEN EDGE AWAY FROM DOOR.
5. TC TO INSTALL (3) CAT 6 AND (1) RG-6 COAX FOR AV USE IN EC PROVIDED 8"x8"x4" AV J-BOX. INSTALL OUTLETS IN AV PROVIDED FACEPLATE OR STORE FOR FUTURE.
6. NOT USED.
7. EC TO PROVIDE 2-GANG J-BOX AT 30" AFF QUANTITY AS SHOWN FOR AV AND/OR TV. FOR EACH J-BOX PROVIDE (1) 1" CONDUIT STUBBED 6" BELOW RAISED FLOOR AND (1) 1" CONDUIT STUBBED 6" ABOVE ACCESSIBLE CEILING.
8. NOT USED.
9. NOT USED.
10. NOT USED.
11. NOT USED.
12. NOT USED.
13. TC TO PROVIDE (3) CAT 6 FOR VIDEO ARRANGEMENT SYSTEM ISDN LINES. TERMINATE AT END OF PATCH PANEL IN TR-2N AND LABEL ISDN-1, ISDN-2, ISDN-3.
14. NOT USED.



1 LEVEL 2 STRUCTURED CABLING PLAN AREA "C"
1/8" = 1' - 0"

0 4' 8' 16'
SCALE: 1/8" = 1'-0"



GENERAL NOTES - CABLING

1. TC TO PROVIDE TELECOMMUNICATIONS BASKET TRAY AND J-HOOK SUPPORT FOR NETWORK CABLING. TC TO PROVIDE SEPARATE J-HOOK SUPPORT FOR SECURITY CABLING. KEEP MINIMUM 6" SEPARATION FROM NETWORK CABLING.
2. ALL NETWORK CABLING TO BE PLENUM RATED UON. REFER TO SPECS FOR CABLE TYPES AND COLORS.
3. TC TO PROVIDE ALL SECURITY AND CCTV CABLING. REFER TO ONE-LINE DRAWING FOR TYPES, SECURITY DEVICES AND FINAL HOOK-UP BY SECURITY CONTRACTOR.
4. TC TO PROVIDE ALL INTERCOM/PAGING CABLING. REFER TO ONE-LINE DRAWING FOR TYPES, INTERCOM AND PAGING DEVICES AND FINAL HOOK-UP BY SECURITY CONTRACTOR.
5. TC TO PROVIDE NETWORK CABLING FOR AUDIO VISUAL DEVICES. AV CONTRACTOR TO PROVIDE CABLING BETWEEN DEVICES. FINAL EQUIPMENT HOOK-UP BY AV CONTRACTOR.
6. TC TO PROVIDE STAINLESS STEEL WALL PLATES WITH MOUNTING STUDS AND PANDUIT CAT 6 JACK FOR ALL WALL PHONE LOCATIONS.
7. TC TO PROVIDE RG-6 PLENUM COAX FOR TV OUTLETS TERMINATED USING COMPRESSION TYPE F-CONNECTORS. INSTALL F-81 FITTING AT FACEPLATE. FOR RUNS EXCEEDING 150', INSTALL RG-11 PLENUM COAX. ROUTE TO NEAREST TR. TV OUTLETS IN EDC TO ROUTE TO WALL BEHIND EQUIPMENT RACK WITH 15' SLACK.

SHEET NOTES - CABLING

1. EC PROVIDED 2" CONDUIT SLEEVE FOR CABLE ROUTING FROM ACCESS FLOOR TO CEILING AREAS.
2. PANIC ALARM. MAY BE BUTTON OR INTERCOM DEPENDING ON LOCATION. TC TO ROUTE CABLE FOR DEVICE AS INDICATED ON DRAWING 1002.
3. EC TO PROVIDE CEILING MOUNTED OUTLET FOR OVERHEAD PROJECTOR. TC TO PROVIDE (1) CEILING MOUNTED CAT 6 OUTLET FOR OVERHEAD PROJECTOR. AV INSTALLER TO PROVIDE PROJECTOR, MOUNT AND FINAL CONNECTION TO AV EQUIPMENT.
4. EC TO PROVIDE 8"X8"X4" J-BOX IN WALL FOR AV USE. ROUTE (2) 1" CONDUITS FROM J-BOX, STUBBED 6" BELOW RAISED FLOOR AND (2) 1" CONDUITS FROM J-BOX STUBBED 6" ABOVE CEILING UON.
5. TC TO INSTALL (3) CAT 6 AND (1) RG-6 COAX FOR AV USE IN EC PROVIDED 8"X8"X4" AV J-BOX. INSTALL OUTLETS IN AV PROVIDED FACEPLATE OR STORE FOR FUTURE.
6. EC TO PROVIDE (3) 4" SLEEVES TO TR-3W ABOVE. STUB 6" BELOW CEILING IN TR-2W AND 4" ABOVE SUB-FLOOR IN TR-3W.
7. EC TO PROVIDE 2-GANG J-BOX AT 30" AFF QUANTITY AS SHOWN FOR AV AND/OR TV. FOR EACH J-BOX PROVIDE (1) 1" CONDUIT STUBBED 6" BELOW RAISED FLOOR AND (1) 1" CONDUIT STUBBED 6" ABOVE ACCESSIBLE CEILING.

1 LEVEL 3 STRUCTURED CABLING PLAN AREA "A"
1/8" = 1' - 0"

0 4' 8' 16'
SCALE: 1/8" = 1'-0"

CITY OF COMMERCE CITY
CIVIC AND JUSTICE CENTER

7887 EAST 60TH AVENUE
COMMERCE CITY, COLORADO 80022

FOR CONSTRUCTION	05.15.06
Technology Coordination	03.20.06
DESIGN DEV - GMP	01.06.06
SCHEMATIC DESIGN	10.07.05

PROJECT No: 1021-1895-02
DATE: 1.06.06
SCALE: AS SHOWN

COMMUNICATIONS
Structured Cabling Plan

T103A

Technology Plus
INCORPORATED
COMMUNICATIONS TECHNOLOGY PLANNING
Aurora, Colorado 80012
Ph: 303-340-8228
Fax: 303-340-8233

RNL-ARCHITECT
RNL-LANDSCAPE ARCHITECT
RNL-MECHANICAL, PLUMBING, ELECTRICAL
SA MIRO-STRUCTURAL ENGINEER
LUND PARTNERSHIP-CIVIL ENGINEER
TECHNOLOGY PLUS-COMMUNICATIONS

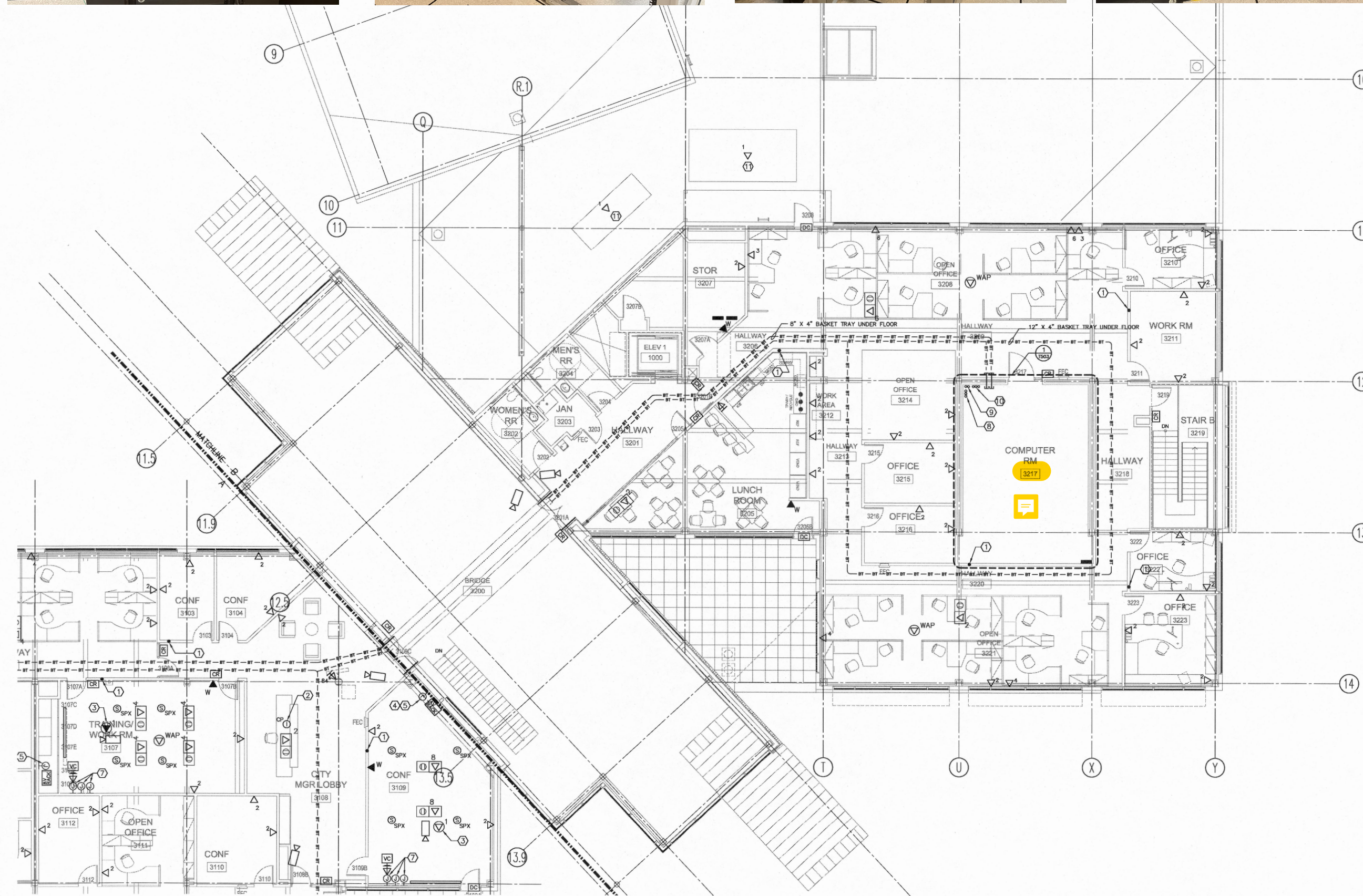
RNL
1515 ARAPAHOE STREET
TOWER III, SUITE 700
DENVER, COLORADO 80202
303 295 1717 f
303 292 0845 f

GENERAL NOTES - CABLING

1. TC TO PROVIDE TELECOMMUNICATIONS BASKET TRAY AND J-HOOK SUPPORT FOR NETWORK CABLING. TC TO PROVIDE SEPARATE J-HOOK SUPPORT FOR SECURITY CABLING. KEEP MINIMUM 6" SEPARATION FROM NETWORK CABLING.
2. ALL NETWORK CABLING TO BE PLENUM RATED UON. REFER TO SPECS FOR CABLE TYPES AND COLORS.
3. TC TO PROVIDE ALL SECURITY AND CCTV CABLING. REFER TO ONE-LINE DRAWING FOR TYPES, INTERCOM AND PAGING DEVICES AND FINAL HOOK-UP BY SECURITY CONTRACTOR.
4. TC TO PROVIDE ALL INTERCOM/PAGING CABLING. REFER TO ONE-LINE DRAWING FOR TYPES, INTERCOM AND PAGING DEVICES AND FINAL HOOK-UP BY SECURITY CONTRACTOR.
5. TC TO PROVIDE NETWORK CABLING FOR AUDIO VISUAL DEVICES. AV CONTRACTOR TO PROVIDE CABLING BETWEEN DEVICES. FINAL EQUIPMENT HOOK-UP BY AV CONTRACTOR.
6. TC TO PROVIDE STAINLESS STEEL WALL PLATES WITH MOUNTING STUDS AND PANDUIT CAT 6 JACK FOR ALL WALL PHONE LOCATIONS.
7. TC TO PROVIDE RG-6 PLENUM COAX FOR TV OUTLETS TERMINATED USING COMPRESSION TYPE F-CONNECTORS. INSTALL F-81 FITTING AT FACEPLATE. FOR RUNS EXCEEDING 150', INSTALL RG-11 PLENUM COAX. ROUTE TO NEAREST TR. TV OUTLETS IN EOC TO ROUTE TO WALL BEHIND EQUIPMENT RACK WITH 15' SLACK.

SHEET NOTES - CABLING

1. EC PROVIDED 2" CONDUIT SLEEVE FOR CABLE ROUTING FROM ACCESS FLOOR TO CEILING AREAS.
2. PANIC ALARM. MAY BE BUTTON OR INTERCOM DEPENDING ON LOCATION. TC TO ROUTE CABLE FOR DEVICE AS INDICATED ON DRAWING T002.
3. EC TO PROVIDE CEILING MOUNTED OUTLET FOR OVERHEAD PROJECTOR. TC TO PROVIDE (1) CEILING MOUNTED CAT 6 OUTLET FOR OVERHEAD PROJECTOR. AV INSTALLER TO PROVIDE PROJECTOR, MOUNT AND FINAL CONNECTION TO AV EQUIPMENT.
4. EC TO PROVIDE 8"x8"x4" J-BOX IN WALL FOR AV USE. ROUTE (2) 1" CONDUITS FROM J-BOX, STUBBED 6" BELOW RAISED FLOOR AND (2) 1" CONDUITS FROM J-BOX STUBBED 6" ABOVE CEILING UON.
5. TC TO INSTALL (3) CAT 6 AND (1) RG-6 COAX FOR AV USE IN EC PROVIDED 8"x8"x4" AV J-BOX. INSTALL OUTLETS IN AV PROVIDED FACEPLATE OR STORE FOR FUTURE.
6. NOT USED.
7. EC TO PROVIDE 2-GANG J-BOX AT 30" AFF QUANTITY AS SHOWN FOR AV AND/OR TV. FOR EACH J-BOX PROVIDE (1) 1" CONDUIT STUBBED 6" BELOW RAISED FLOOR AND (1) 1" CONDUIT STUBBED 6" ABOVE ACCESSIBLE CEILING.
8. EC TO PROVIDE (3) 4" CONDUITS TO TR-1N (1008).
9. EC TO PROVIDE (2) 4" CONDUITS TO TR-2N (2330).
10. EC TO PROVIDE (3) 4" SLEEVES TO EOC (2222).
11. TC TO PROVIDE CAT 6 NETWORK CABLE FOR HVAC SYSTEM. COORDINATE WITH BAS & HVAC INSTALLER FOR ACTUAL LOCATIONS.



1 LEVEL 3 STRUCTURED CABLING PLAN AREA "B"
1/8" = 1' - 0"

0 4' 8' 16'
SCALE: 1/8" = 1'-0"