

SHEETS BEARING THIS SEAL ARE AUTHENTICATED. RESPONSIBILITY FOR ALL OTHER PLANS, SPECIFICATIONS OR INSTRUMENTS ARE DISCLAIMED.

JS Smith Consulting Engineers, P.C.
Aaron Douglas Smith, P.E.
1801 W. 20th St., Suite 200
St. Louis, MO 63104
PHONE: 417-621-0444 FAX: 417-624-0430

PROJECT:
NEW O'REILLY AUTO PARTS STORE
W. YUMA RD. AND COTTON LANE
GOODYEAR, AZ 85338

FOUNDATION DETAILS

O'Reilly AUTO PARTS

CORPORATE OFFICES
233 SOUTH PATTERSON
SPRINGFIELD, MISSOURI 65802
(417) 962-2674 TELEPHONE

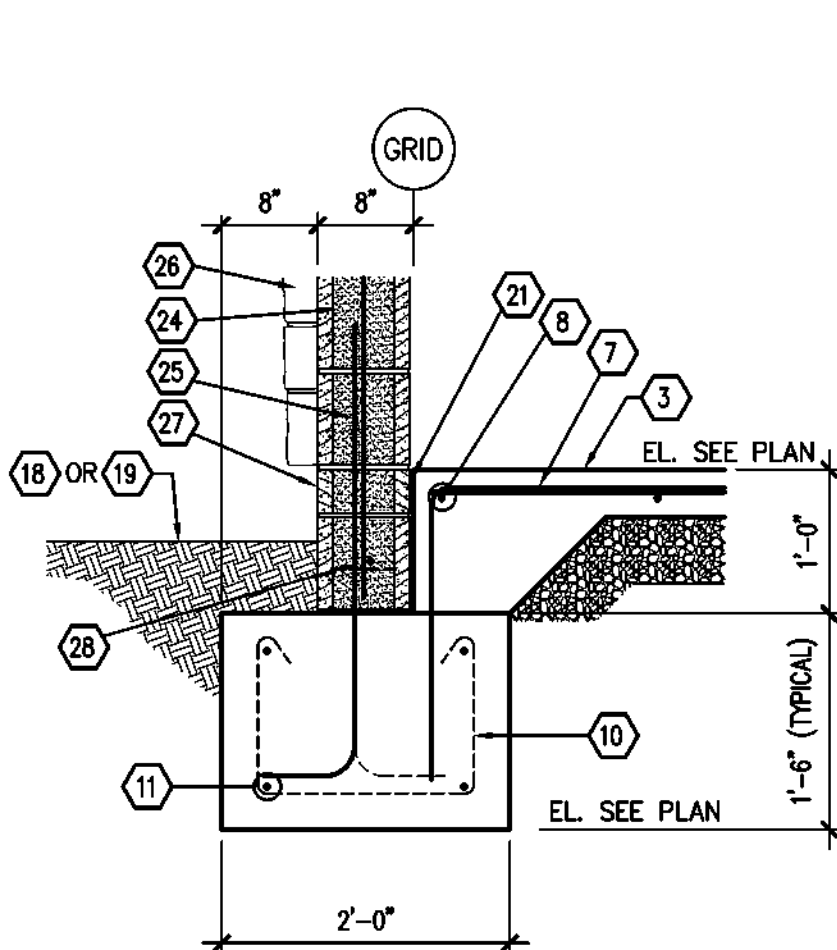
DRAWN BY: BTJ
CHECKED BY: AS
DATE: 8/25/2023
REVISION:
PROJECT NUMBER: 21405-GY3
SHEET NUMBER

S3.1

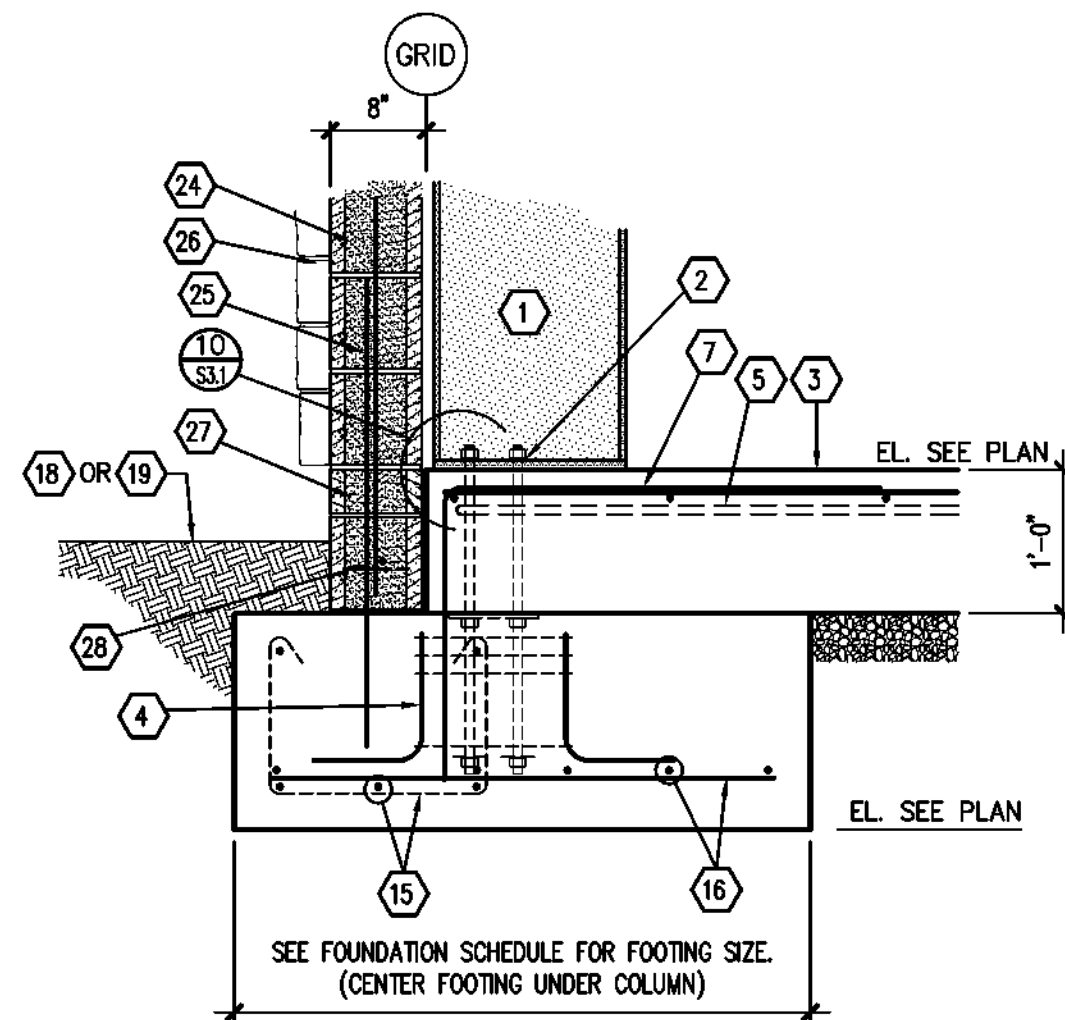
© COPYRIGHT 2023 - DESIGNS, DRAWINGS AND SPECIFICATIONS ARE INSTRUMENTS OF SERVICE AND ARE THE PROPERTY OF THE DESIGN PROFESSIONAL. REPRODUCTION PROHIBITED WITHOUT THE EXPRESSED WRITTEN CONSENT OF THE DESIGN PROFESSIONAL.

KEYNOTES

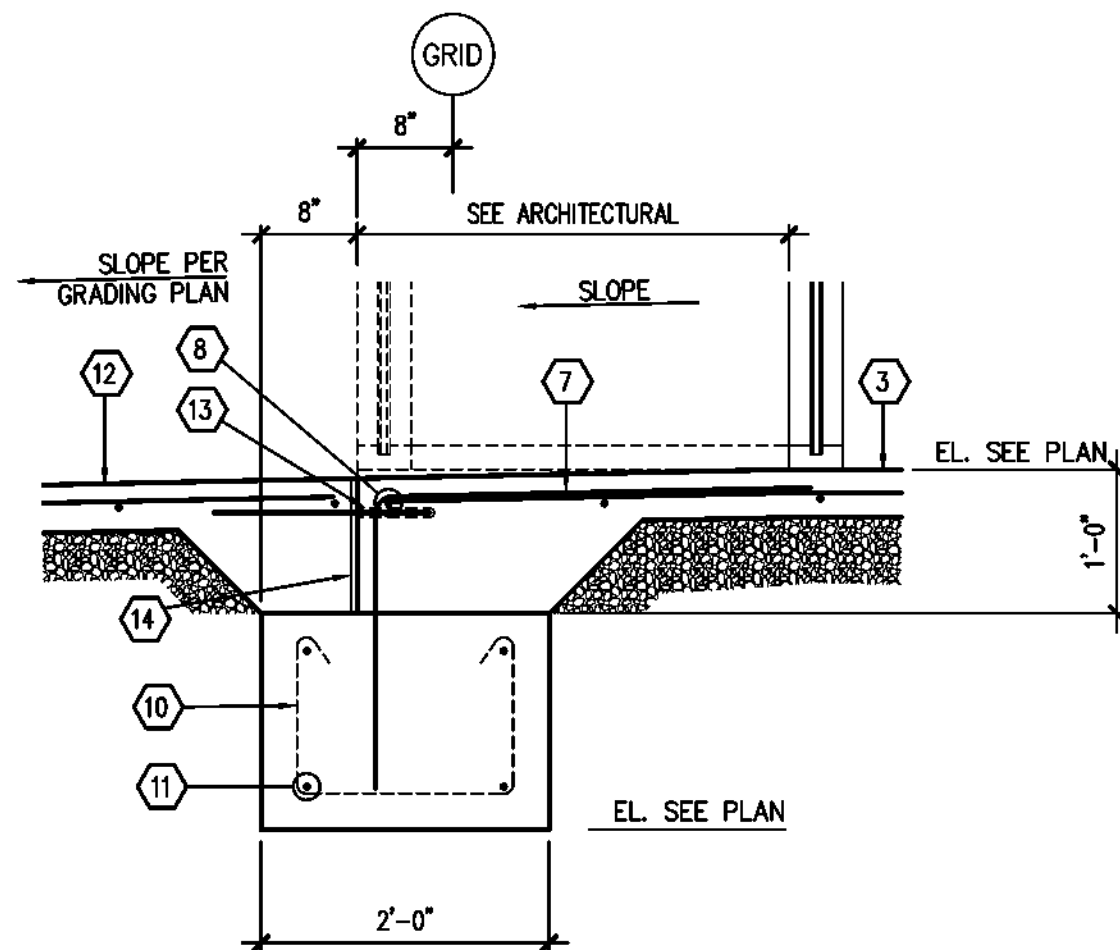
- PRE-ENGINEERED METAL BUILDING STRUCTURAL SYSTEM. SEE P.E.M.B. SHOP DRAWINGS FOR ADDITIONAL INFORMATION.
- ANCHOR BOLTS. REFER TO FOUNDATION SCHEDULE AND PRE-ENGINEERED METAL BUILDING DRAWINGS FOR SIZE, QUANTITY AND PLAN LOCATION. SEE 1/S3.2 FOR TYPICAL SHOP FABRICATED ANCHOR ASSEMBLY.
- INTERIOR CONCRETE SLAB SEE FOUNDATION PLAN.
- SEE DETAIL 11/S3.1 FOR VERTICAL ANCHOR BOLT CONFINEMENT REINFORCEMENT
- #5 SLAB HAIRPIN - SEE DETAIL 7/S3.1
- SEE FOUNDATION SCHEDULE FOR PILASTER REINFORCEMENT.
- #3x5'-0" DOWEL @ 36" O.C. FIELD BEND AS SHOWN 24"
- #4 CONTINUOUS
- 6" (NOM) SMOOTH FACE BLOCK
- #3 STIRRUPS @ 48" O.C.
- (2) #4's CONTINUOUS TOP & BOTTOM.
- EXTERIOR CONCRETE SLAB OR SIDEWALK SEE FOUNDATION PLAN.
- AT EXTERIOR DOOR LOCATIONS DRILL 6" DEEP HOLES FOR #4x1'-6" DOWELS @ 24" O.C. - APPLY ADHESIVE AND INSTALL DOWELS. SEE ADHESIVE SYSTEM NOTES SHEET S1.1 FOR ADHESIVE ANCHOR INSTALLATION
- 1/2" ISOLATION JOINT WITH ASPHALTIC FILLER & SEALANT
- CONTINUOUS FOOTING REINFORCEMENT TO RUN THROUGH COLUMN FOUNDATIONS. SEE SECTION 1/S3.1 FOR REINFORCEMENT INFORMATION.
- COLUMN FOOTING REINFORCEMENT SEE FOUNDATION SCHEDULE.
- SEE CORRELATING STRUCTURAL FRAMING SECTION FOR METAL STUD SIZE, GAUGE, SPACING, AND ATTACHMENT REQUIREMENTS. REFER TO ARCHITECTURAL FOR FINISHES AND ADDITIONAL REQUIREMENTS.
- PAVING, SEE SITE DEVELOPMENT DRAWINGS FOR ADDITIONAL INFORMATION.
- SEE GRADING PLAN FOR FINISHED GRADES.
- STEEL BOLLARD SEE SITE PLAN.
- 3/8" ISOLATION JOINT WITH ASPHALTIC FILLER & SEALANT
- (3) #3 TIES @ 12" O.C.
- #3 TIES @ 12" O.C. (PROVIDE 2 TIES MINIMUM)
- 8" (NOM) SMOOTH FACE CMU. REFER TO CMU WALL NOTES ON SHEET S1.1 FOR WALL VERTICAL AND HORIZONTAL REINFORCEMENT.
- HOOKE DOWEL PROJECTING INTO MASONRY WALL. MATCH SIZE AND SPACING OF WALL REINFORCEMENT, SEE STRUCTURAL NOTES SHEET S1.1
- WALL FINISH, SEE ARCHITECTURAL
- 4" TALL SMOOTH FACE CMU.
- FIRST COURSE TO BE CONTINUOUS 8" (NOM) SMOOTH FACE BOND BEAM W/ (1) #5 CONTINUOUS



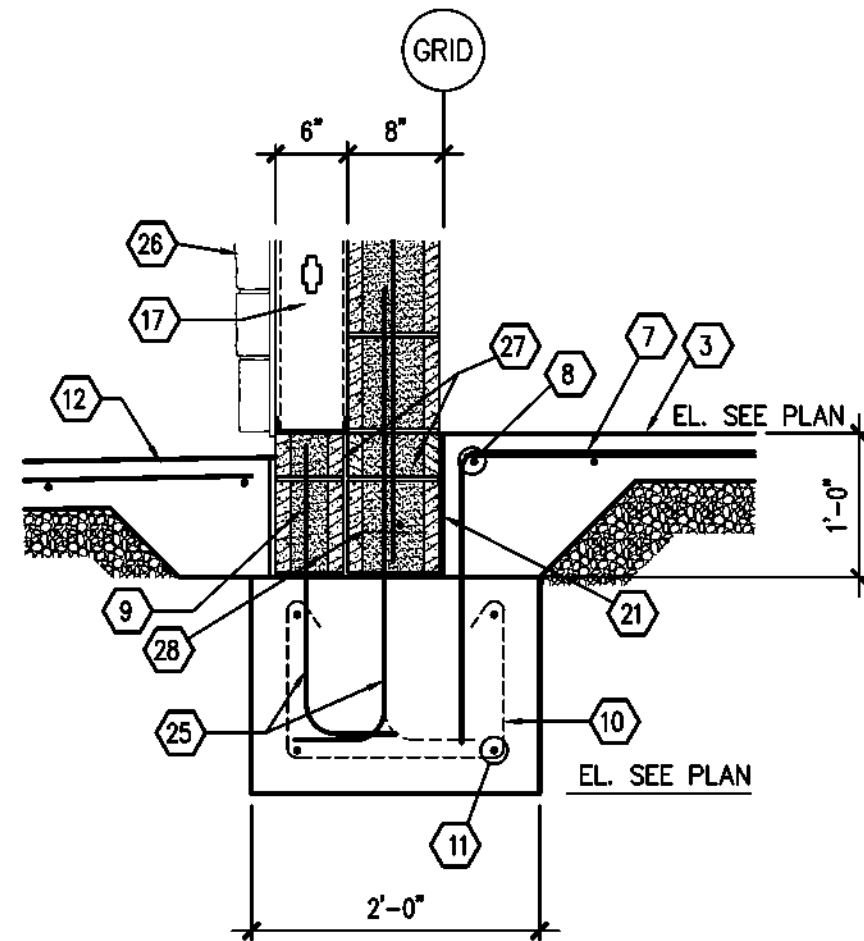
1 SECTION
S3.1 SCALE: 3/4" = 1'-0"



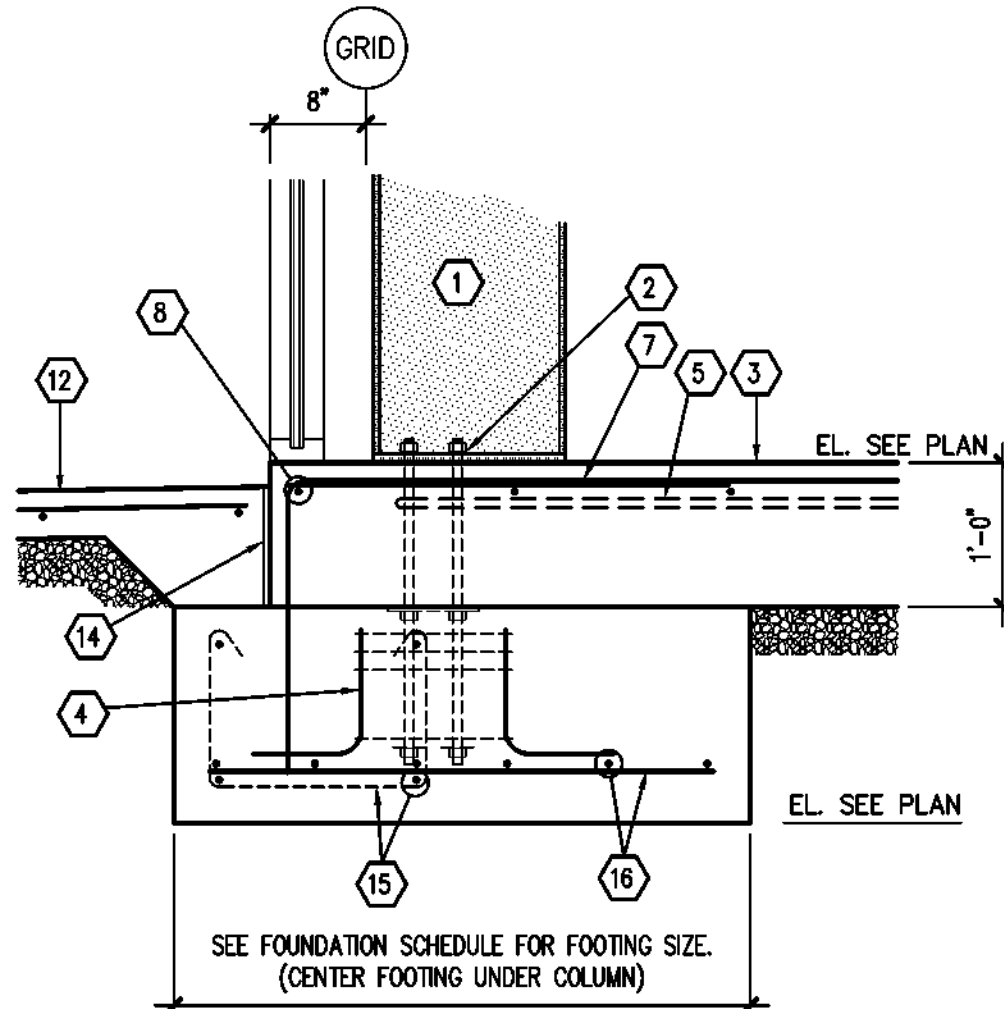
2 SECTION
S3.1 SCALE: 3/4" = 1'-0"



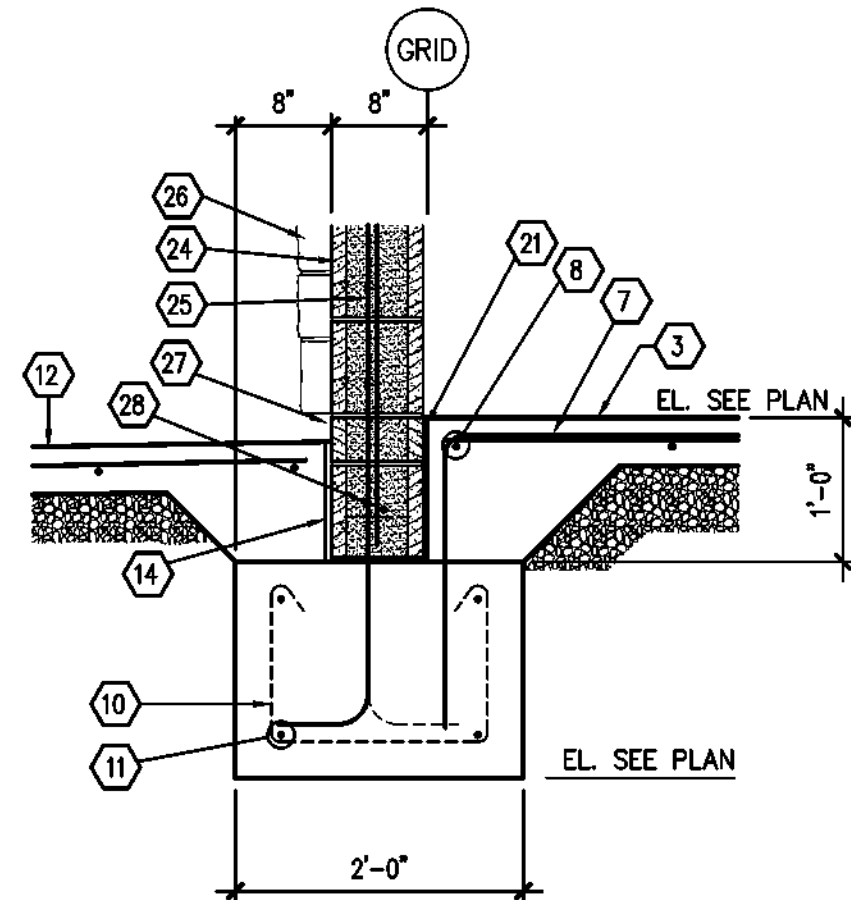
3 SECTION
S3.1 SCALE: 3/4" = 1'-0"



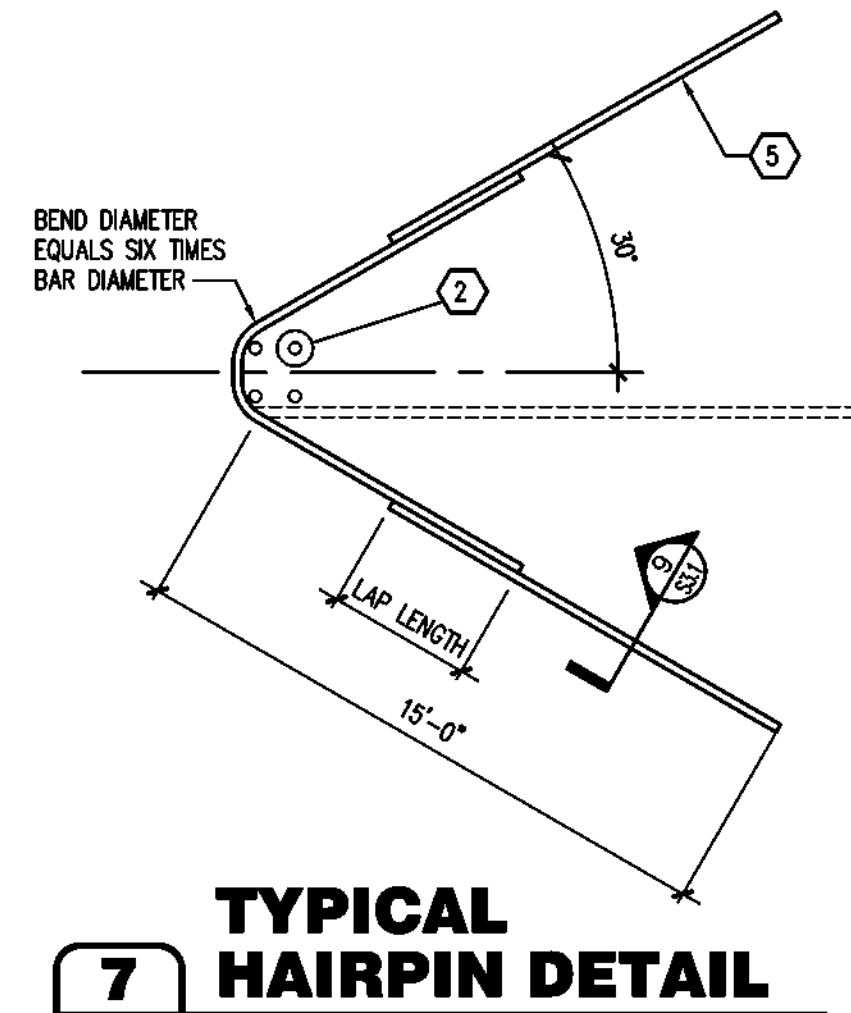
4 SECTION
S3.1 SCALE: 3/4" = 1'-0"



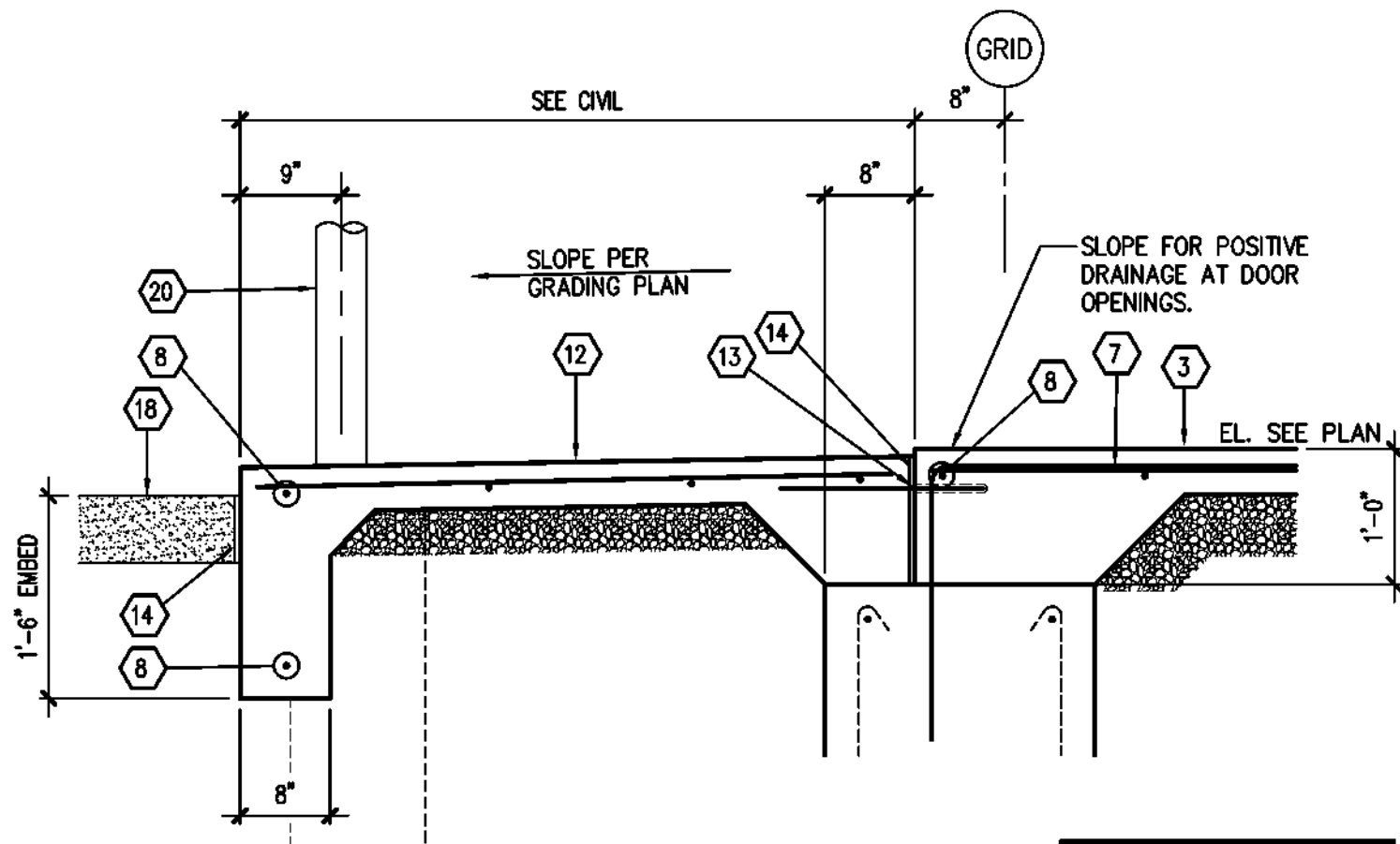
5 SECTION
S3.1 SCALE: 3/4" = 1'-0"



6 SECTION
S3.1 SCALE: 3/4" = 1'-0"

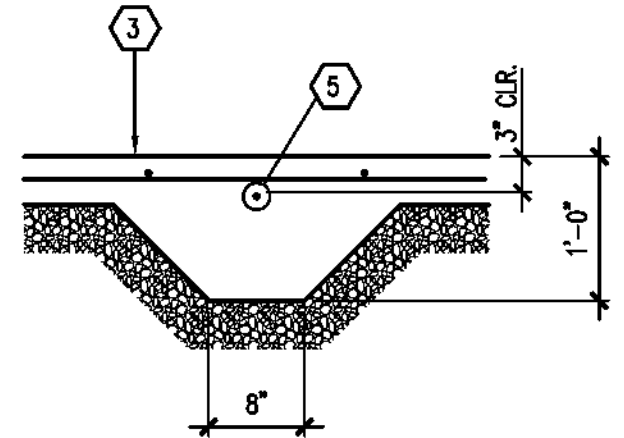


7 TYPICAL HAIRPIN DETAIL
S3.1 SCALE: NONE

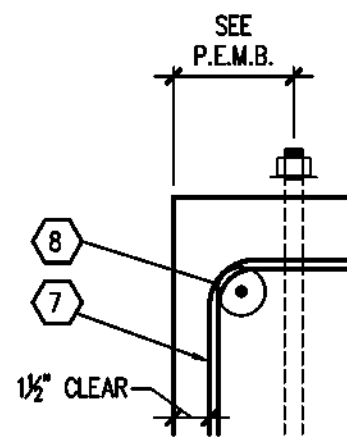


8 SECTION
S3.1 SCALE: 3/4" = 1'-0"

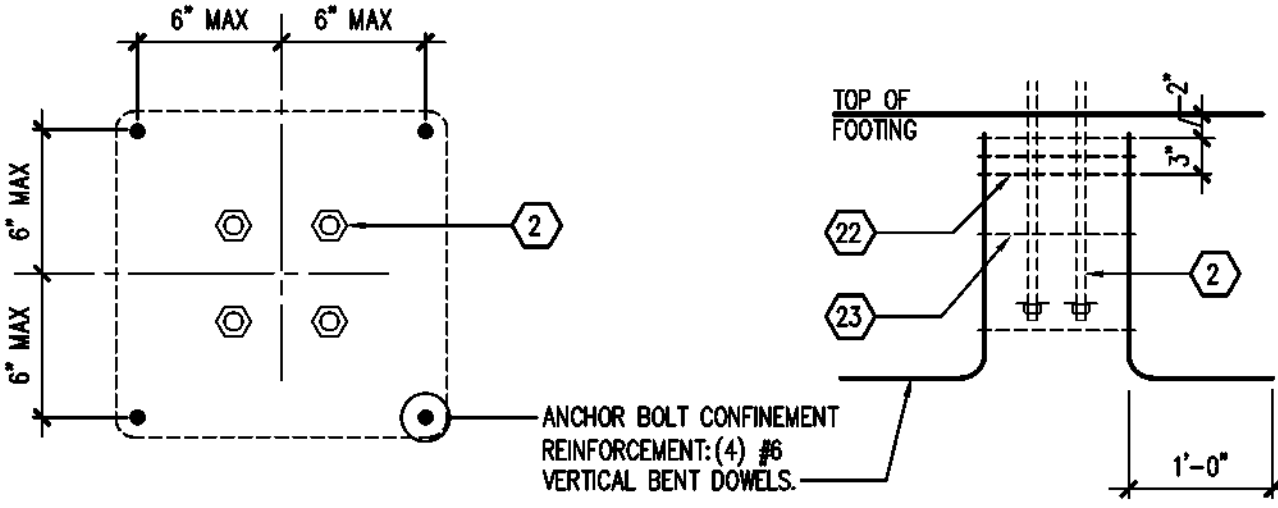
SEE SECTION 1/S3.1 FOR TYPICAL FOOTING AND REINFORCEMENT



9 SECTION
S3.1 SCALE: 3/4" = 1'-0"



10 DETAIL
S3.1 SCALE: 1 1/2" = 1'-0"



11 SECTION
S3.1 SCALE: VARIES