

FOUNDATION PLAN

SCALE: 1/8" = 1'-0"



KEYNOTES

- 1 SLAB HAIRPIN. SEE DETAIL 7/S3.1
- 2 PROVIDE #4x4'-0" DOWEL ANGLE DOWEL AT SLAB INSIDE CORNERS
- 3 CONTROL OR CONSTRUCTION JOINT SEE DETAILS 1 & 2/S2.1
- 4 SIDEWALK: PROVIDE 4" THICK CONCRETE REINFORCED W/ #3s @ 18" O.C. EACH WAY (PLACED AT MID-HEIGHT OF SLAB) OVER COMPACTED SUB-BASE MATERIAL (AS DIRECTED BY THE GEOTECHNICAL REPORT OR ONSITE GEOTECHNICAL ENGINEER) PROPERLY PREPARED SUBGRADE. SEE CIVIL DRAWINGS FOR JOINT REQUIREMENTS, EXTENTS OF FLATWORK, AND TOP OF CONCRETE SPOT ELEVATIONS.
- 5 STEEL BOLLARD; SEE SITE DEVELOPMENT PLANS AND DETAILS. (WHERE APPLICABLE, ALIGN WITH STOREFRONT MULLIONS AND JAMBS OF OVERHEAD DOOR.)
- 6 ISOLATION JOINT. SEE DETAIL 3/S2 (SPACING NOT TO EXCEED 30'-0" O.C.)
- 7 6" WIDE DOORPAD: PROVIDE 4" THICK CONCRETE REINFORCED W/ #3s @ 18" O.C. EACH WAY (PLACED AT MID-HEIGHT OF SLAB) OVER COMPACTED SUB-BASE MATERIAL (AS DIRECTED BY THE GEOTECHNICAL REPORT OR ONSITE GEOTECHNICAL ENGINEER) ON PROPERLY PREPARED SUBGRADE. EXTEND CONCRETE 1'-6" PAST DOOR JAMBS. SEE CIVIL DRAWINGS FOR TOP OF CONCRETE SPOT ELEVATIONS.

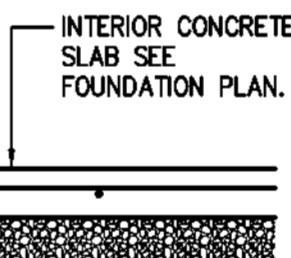
FOUNDATION SCHEDULE

MARK	FOOTING SIZE (W x L x T)	FOOTING REINFORCEMENT		BOTTOM OF FOOTING ELEVATION	PILASTER SIZE	PILASTER REINFORCEMENT		TOP OF PILASTER ELEVATION	MARK
		LONG.	TRANS.			VERT.	TIES		
F1	4'-0"x4'-0"x1'-6"	(6) #5's	(6) #5's	97'-6"	-----	-----	-----	-----	F1
F2	4'-0"x4'-0"x1'-6"	(6) #5's	(6) #5's	97'-6"	-----	-----	-----	-----	F2
F3	5'-6"x5'-6"x1'-6"	(6) #4 EACH WAY TOP & BOT.		96'-0"	2'-6"x2'-6"	(12) #6	6/S3.2	99'-4"	F3
F4	4'-0"x4'-0"x1'-6"	(6) #5's	(6) #5's	97'-6"	-----	-----	-----	-----	F4

NOTES:

1. ALL ANCHOR BOLTS SHALL BE SIZE, QUANTITY AND SPACING AS SPECIFIED BY THE PRE-ENGINEERED METAL BUILDING MANUFACTURER. MAINTAIN 3" MINIMUM CONCRETE COVER AROUND BOLTS. TIES SHALL WRAP AROUND ANCHOR BOLTS.
2. COLUMN BASE PLATES ARE TO REST ON TOP OF SLAB. PROVIDE LEVEL BEARING SURFACE FOR EVEN CONTACT.
3. COLUMN FOOTING REINFORCEMENT TO BE INTEGRAL WITH CONTINUOUS FOUNDATION REINFORCEMENT (WHERE APPLICABLE).
4. PROVIDE ANCHOR BOLT TEMPLATES AT COLUMN.
5. ALL SPREAD FOOTINGS ARE TO BE CENTERED BENEATH COLUMNS UNLESS NOTED OTHERWISE.

SLAB CONTROL JOINT, TOOLED OR
SAWN. CONTROL JOINT TO BE 1/8" x 1/4"
SLAB THICKNESS. SEE FOUNDATION
PLAN FOR JOINT LOCATIONS.



TYP. CONTROL JOINT DETAIL

1

S2.1 SCALE: 3/4" = 1'-0"

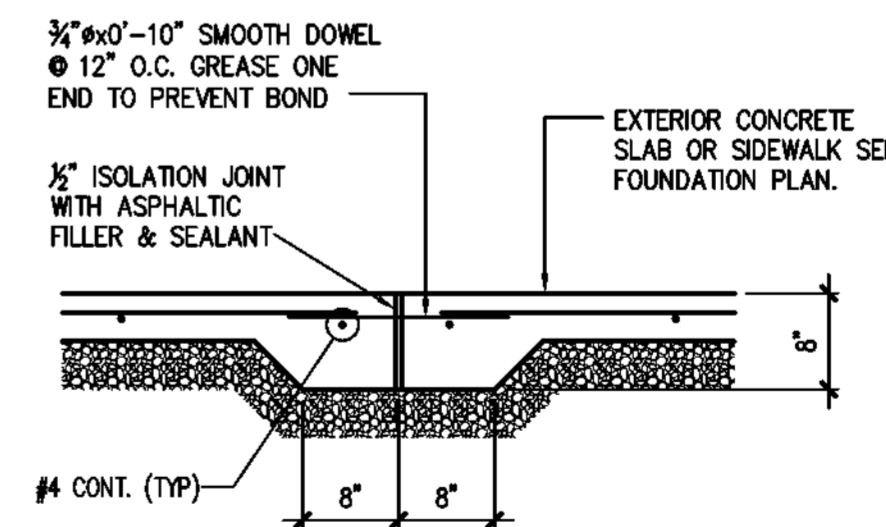
3/4"x0'-10" SMOOTH DOWEL @ 12" O.C.
GREASE ONE END TO PREVENT BOND
CONSTRUCTION JOINT (IF NEEDED).
LOCATION TO COINCIDE WITH CONTROL
JOINTS. (SEE FOUNDATION PLAN).



TYP. CONSTR. JOINT DETAIL

2

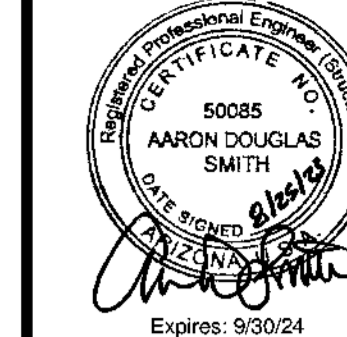
S2.1 SCALE: 3/4" = 1'-0"



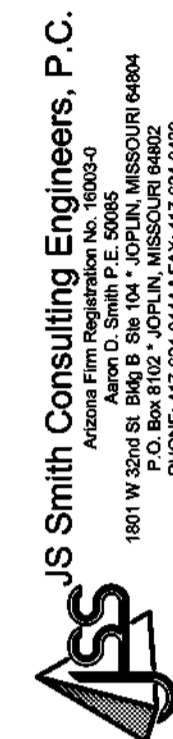
SIDEWALK ISOLATION JOINT

3

S2.1 SCALE: 3/4" = 1'-0"



SHEETS BEARING THIS SEAL ARE
AUTHENTICATED. RESPONSIBILITY FOR
ALL OTHER PLANS, SPECIFICATIONS
OR INSTRUMENTS ARE DISCLAIMED.



PROJECT:
NEW O'REILLY AUTO PARTS STORE
W. YUMA RD. AND COTTON LANE
GOODYEAR, AZ 85338

FOUNDATION PLAN

O'Reilly AUTO PARTS

CORPORATE OFFICES
233 SOUTH PATTERSON
SPRINGFIELD, MISSOURI 65802
(417) 862-2674 TELEPHONE

DRAWN BY: BTJ
CHECKED BY: AS
DATE: 8/25/2023
REVISION:
PROJECT NUMBER:
21405-QY3
SHEET NUMBER

S2.1